

KIM B. SHOEMAKER

CONSULTING GEOLOGIST

316-654-9709 * WICHITA, KS

GEOLOGIST'S REPORT

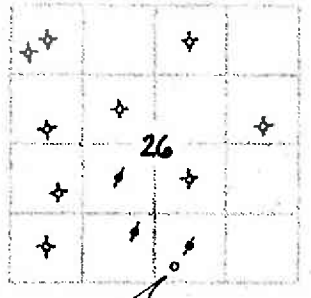
DRILLING TIME AND SAMPLE LOG

COMPANY L. D. DRILLING, INC.
 LEASE #1-26 CRAIG MYERS
 FIELD MINER
 LOCATION 330' FSL & 2210' FEL
 SEC 26 TWP 17s RGE 24w
 COUNTY NESS STATE KANSAS
 CONTRACTOR L. D. DRILLING, INC.
 SPUD 4-26-16 COMP * 5-10-16
 RID 4585 LID 4584
 MUD WP 3531 TYPE MUD CHEMICAL

ELEVATIONS
 KB 2462
 DF _____
 GL 2457
 Measurements Are All From _____
 CASING
 SURFACE 8 5/8" @ 313'
 PRODUCTION 5 1/2" @
 ELECTRICAL SURVEYS
 DUAL IND., DENS-N., MICRO

SAMPLES SAVED FROM 3700 TO 4585
 DRILLING TIME KEPT FROM 3500 TO 4585
 SAMPLES EXAMINED FROM 3700 TO 4585
 GEOLOGICAL SUPERVISION FROM 3900 TO 4585
 GEOLOGIST ON WELL KIM B. SHOEMAKER

FORMATION TOPS	LOG	SAMPLES
ANHYDRITE	1762+700	1765+697
B/ANN.	1798+664	1802+660
HEEBNER	3836-1374	3841-1379
LANSING	3877-1415	3881-1419
B/KC	4168-1706	4173-1711
PAWNEE	4289-1827	4292-1830
FORT SCOTT	4376-1914	4378-1916
CHEROKEE	4400-1938	4404-1942
MISSISSIPPI DOL.	4471-2009	4477-2015

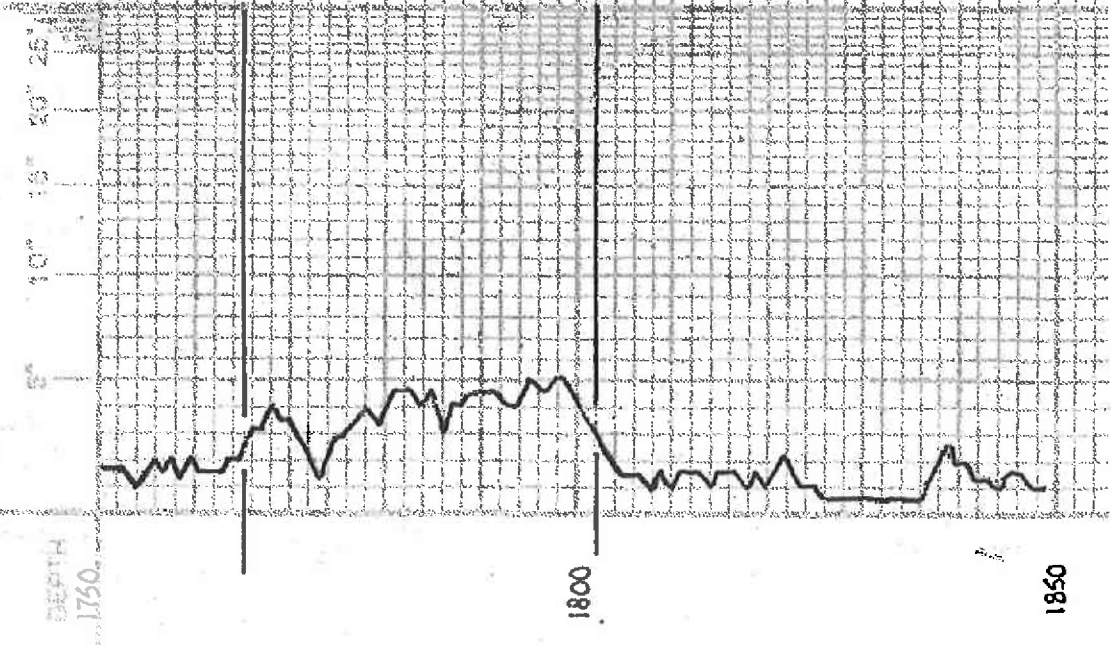


REMARKS
 APR: 15-135-25907
 4-26-16 SPUD 5:10 @ 4585'
 4-27 @ 316'
 4-28 @ 1751'
 4-29 @ 2665'
 4-30 @ 3110' Shut down 5" RAIN *
 5-4 @ 3118'
 5-5 @ 3465'
 5-6 @ 3965'
 5-7 @ 4310'
 5-8 @ 4410'
 5-9 @ 4484'

LEGEND

- Dolomite
- Chert
- Oil Sands
- Limestone
- Carb. sh
- Shale
- Sandstone
- Silt
- Anhydrite

DRILLING TIME IN MINUTES
 PER FOOT
 Index of Penetration, International



REMARKS

SAMPLE DESCRIPTIONS

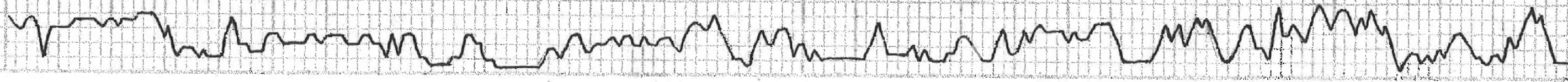
LITHOLOGY

3500

3600

3700

VIS. CT
WT: 8.7
MS: 8.0
CAUTION



Samples are tagged.

sh. clay. blk.

sh. clay. blk. silty

ls. wt. fossil.

ls. wt. sh. fossil.

sh. clay.

ls. clay. fossil.

sh. clay.

sh. clay.

ls. sand and. c. little silty

ls. wt. clay.

ls. sand. fossil.

ls. sand. wt. blk.

3800

3900

4000

4100

HEEBNER 3841-1379

SH. BLK. CONG.

LS. Tr. w/ ool.
LS. Tr. V. Foss. Sl. Foss.

Sh. L. G.

LS. w/ sh. Foss. Sl. Chilly

LS. w/ V. Sl. Foss. Sl. A

Sh. L. G. Pl.

LANSING 3881-1419

LS. w/ sh. Foss. Sl. A

A. L. G.

LS. Tr. Del. V. Sl. A

Sh. Bl. G. Sl.

LS. w/ Tr. Sl. Foss. Sl. A

LS. w/ Tr. Sl. A

LS. w/ sh. V. Sl. Foss.

LS. w/ sh. Foss. Chilly

LS. w/ Chilly

Sh. L. G.

LS. Tr. w/ Sl. ool. ool.

LS. Tr. Sl. A

LS. Tr. w/ ool. ool. V. Sl. Chilly

LS. w/ Chilly

LS. L. G. V. Sl. Chilly

Sh. L. G. Sl. A

LS. Bl. G. Sl. Foss.

A. W. LS. w/ Tr. V. Sl. Foss. Sl. Chilly

Sh. L. G. Sl.

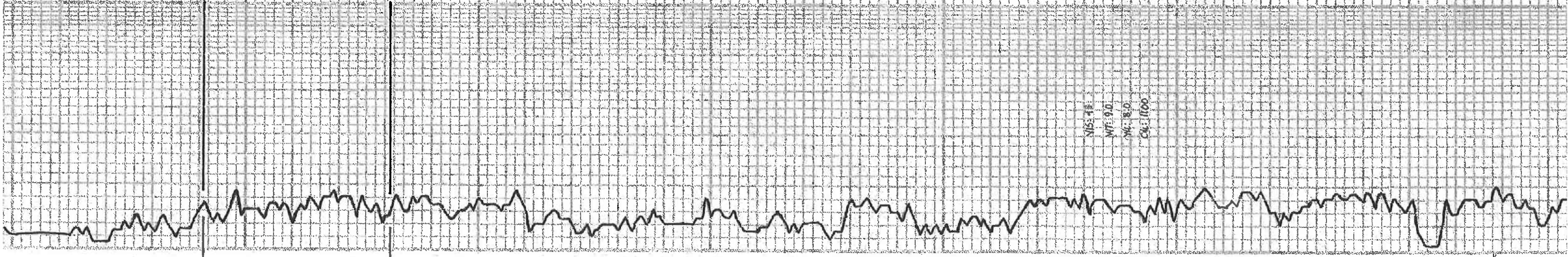
LS. Tr. V. Sl. A

LS. w/ ool. ool. ool. Sl. V. Sl. Chilly

LS. L. G. V. Sl. Foss. Sl. A

Sh. L. G. Sl. A

VISE # 1
WT: 90
ML: 80
CL: 1100



LS. 1/2" V.S.D. Foss. Sil. Chalky

Sh. G. Ch.

LS. 1/2" V.S.D. Foss. Sil. Chalky

BIKE 4173-1711
Sh. G. Ch.

LS. 1/2" Bl. V.S.D. Foss.

4200

Sh. Rd.

Sh. Rd. Blue-Gy.

LS. 1/2" Fy. V.S.D. Foss.

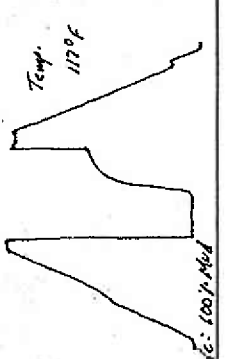
Sh. Rd.

LS. 1/2" Bl. V.S.D. Foss. Sil. Chalky

DST (2) 4262-4277 (STRADDLE)

1st Stop: Blow out to 1"
30-30
Rec. 3' Mud

FP: 4-13 #
SIP: 4270 #



PANNEE 4292-1830

Test Sample: 100 N. Mud

LS. 1/2" Bl. V.S.D. Foss. Sil. Chalky
DR. 1/2" Bl. V.S.D. Foss. Sil. Chalky
No. 1000

LS. 1/2" Fy. Dm. V.S.D. Foss.

4300

LS. 1/2" Fy. Dm. V.S.D. Foss.

LS. 1/2" V.S.D. Foss.

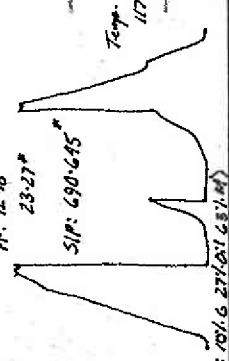
WT: 46
WT: 39
WT: 76
CAL: 2800

DST (1) 4364-4410

1st Stop: Blow out to 3 1/2"
2nd Stop: " " " 8 1/2"
30-45-45-60
Rec. 18" G.I.P.
35' 506CM
(77.6 37.01.967M)

FP: 12-8
SIP: 4365 #

29-27 #



FORT SCOT 4378-1916

LS. 1/2" Bl. V.S.D. Foss. Sil. Chalky
DR. 1/2" Bl. V.S.D. Foss. Sil. Chalky
No. 1000

LS. 1/2" Fy. Dm. V.S.D. Foss.

4400

CHEROKEE 4404-1942

Sh. Blk. Carb.

LS. 1/2" Fy. V.S.D. Foss. Sil. Chalky

LS. 1/2" Fy. Dm. V.S.D. Foss.

Sh. Bl. Carb.

LS. 1/2" Bl. V.S.D. Foss. Sil. Chalky

Sh. Bl. Carb.

Sh. Yellow Clay

MISSISSIPPI 4461-2002

DR. 1/2" Bl. V.S.D. Foss. Sil. Chalky
No. 1000

DST (3) 4422-4484

1st Stop: Bottom Bucket 11 MIN.
2nd Stop: " " 12"
30-45-45-60

Rec. 160' G.I.P.
725' G.O. (1001.65X0.1) G.O.
70' 956M (171.6 77.01.71.00)

FP: 40
SIP: 4422 #
28-30 #

