



**TRILOBITE
TESTING, INC**

DRILL STEM TEST REPORT

Triple Crown Operating LLC

33 20s 22w Ness,KS

2201 S Utica Pl Ste 100
Tulsa OK 74114-7099

Barricklow #1-33

Job Ticket: 64929

DST#: 1

ATTN: Rod Anderson

Test Start: 2016.06.08 @ 23:28:00

GENERAL INFORMATION:

Formation: **Mississippian**

Deviated: No Whipstock: ft (KB)

Time Tool Opened: 02:25:30

Time Test Ended: 08:14:00

Test Type: Conventional Bottom Hole (Initial)

Tester: Jim Svaty

Unit No: 76

Interval: 4250.00 ft (KB) To 4346.00 ft (KB) (TVD)

Reference Elevations: 2189.00 ft (KB)

Total Depth: 4346.00 ft (KB) (TVD)

2181.00 ft (CF)

Hole Diameter: 7.88 inches Hole Condition: Fair

KB to GR/CF: 8.00 ft

Serial #: 8289 Outside

Press@RunDepth: 233.30 psig @ 4255.00 ft (KB)

Capacity: 8000.00 psig

Start Date: 2016.06.08

End Date:

2016.06.09

Last Calib.:

2016.06.09

Start Time: 23:28:02

End Time:

08:14:15

Time On Btm:

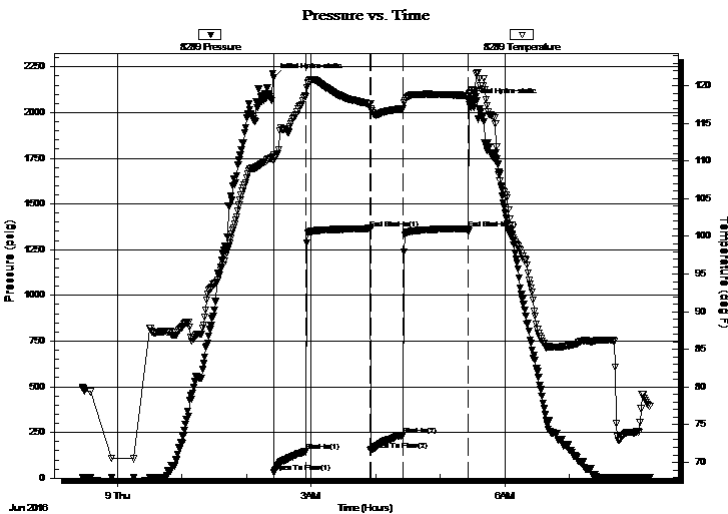
2016.06.09 @ 02:25:15

Time Off Btm:

2016.06.09 @ 05:26:45

TEST COMMENT: 30-IFP- BOB in 15min.
60-ISIP- 1/4in. Blow Died in 29min.
30-FFP- BOB in 14min.
60-FSIP- Weak Surface Blow Died in 12min.

PRESSURE SUMMARY



Time (Min.)	Pressure (psig)	Temp (deg F)	Annotation
0	2191.73	110.89	Initial Hydro-static
1	32.32	110.07	Open To Flow (1)
30	148.46	118.57	Shut-In(1)
90	1364.76	117.62	End Shut-In(1)
90	151.93	116.90	Open To Flow (2)
120	233.30	117.00	Shut-In(2)
181	1365.39	118.70	End Shut-In(2)
182	2057.05	118.97	Final Hydro-static

Recovery

Length (ft)	Description	Volume (bbl)
250.00	GMCO 10%g 40%m 50%o	2.40
250.00	GMCO 30%g 30%m 40%o	3.51
65.00	Free Oil 100%	0.91
0.00	180 GIP	0.00

Gas Rates

	Choke (inches)	Pressure (psig)	Gas Rate (Mcf/d)



**TRILOBITE
TESTING, INC**

DRILL STEM TEST REPORT

FLUID SUMMARY

Triple Crown Operating LLC

33 20s 22w Ness, KS

2201 S Utica Pl Ste 100
Tulsa OK 74114-7099

Barricklow #1-33

Job Ticket: 64929

DST#: 1

ATTN: Rod Anderson

Test Start: 2016.06.08 @ 23:28:00

Mud and Cushion Information

Mud Type: Gel Chem

Cushion Type:

Oil API:

37 deg API

Mud Weight: 9.00 lb/gal

Cushion Length:

ft

Water Salinity:

ppm

Viscosity: 60.00 sec/qt

Cushion Volume:

bbbl

Water Loss: 7.60 in³

Gas Cushion Type:

Resistivity: ohm.m

Gas Cushion Pressure:

psig

Salinity: 7500.00 ppm

Filter Cake: 2.50 inches

Recovery Information

Recovery Table

Length ft	Description	Volume bbbl
250.00	GMCO 10%g 40%m 50%o	2.405
250.00	GMCO 30%g 30%m 40%o	3.507
65.00	Free Oil 100%	0.912
0.00	180 GIP	0.000

Total Length: 565.00 ft

Total Volume: 6.824 bbl

Num Fluid Samples: 0

Num Gas Bombs: 0

Serial #:

Laboratory Name:

Laboratory Location:

Recovery Comments:

