

COACHMAN ENERGY OP. CO. LLC

1125 17th Street - Suite 410
Denver, CO 80202 - 2025

Contact: Ben Jackson: 303-931-7368
Neyeska Mut : 303-297-2200

Ks. Operator License # 35300

Op. Manager : Frank Canepa: 303-478-0292
Drilling Consultant: Justin Hamlin: 620-544-5981

Well Information

Well Name: Holcomb 1-7-14-34
Location: Sec. 07 - T14S - R34W
545' FSL & 430' FWL
SW - SW - SW
County: Logan County, Kansas
Field: TBD
API#: 15-109-21461-00-00

KB Elevation: 3040'
Ground Elevation: 3035'
Spud Date: 05/19/2016
TD Date: 05/26/2016
Rig Total Depth: 4700'
Logger Total Depth: 4739'
Formation: Mississippian

Surface Casing: 211' of 8 5/8" set @ 218' KB

Drilling Fluid Type: Chemical/Fresh Water Gel

Logged By

Ard Consulting Services Bruce B. Ard

6000 10th Street
Great Bend, KS 67530

Geologist: Bruce B. Ard

KPG# 220

Phone Number: 620-357-1849

Drilling Contractor

Contractor: W&W Drilling
Address: 233 So. 4th St
Wakeeney, KS 67672
Ph Number : 785-743-6774

Rig #: 10
Rig Phone Number: 785-259-4570
Tool Pusher: Rick Hilgers
Pushers Number: 785-743-8492

Notes

After review of the Open Hole Logs, DST Results & Geological Log, it was recommended and agreed upon by all interested parties to cease drilling operations on the Holcomb 1-7-14-34 to plug and abandon as a dry hole.

The drilling samples were saved and delivered to the Kansas Geological Survey Sample Library, located in Wichita Kansas, where they will be available for review.

Respectfully Submitted, Bruce B. Ard - KPG# 220

Coachman Energy Operating Co. LLC

DAILY DRILLING REPORT

DATE	7:00 AM DEPTH	Last 24 Hour Operations
5/21/2016	3030	displaced @ 3383, call depth @ 3400, arrive on location 3530, drilling ahead, Lower Topeka @

3630, drilling ahead





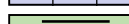



5/22/2016	3700	King Hill @ 3740, Queen Hill @ 3800, Heebner @ 3852, Lansing @ 3904, circ 30 min @ 3930, circ @ 3960, circ @ 3996, short trip, TOH, TIH
5/23/2016	4090	TIH, CTCH, resume drilling, circ @ 4029, Muncie Creek @ 4074, circ @ 4110, circ @ 4140, circ @ 4170, circ @ 4193, circ @ 4210, BKC @ 4248, circ @ 4250, circ @ 4274, Marmaton @ 4290, drilling
5/24/2016	4390	circ @ 4344, Altamont @ 4346, circ @ 4490 for samples & to condition hole for short trip & deviation survey, drop survey, strap out, trip in CTCH, resume drilling, Fort Scott @ 4420, Upper Cherokee @ 4438, circ @ 4440, Lower Cherokee @ 4471, circ @ 4494
5/25/2016	4575	Johnson zone @ 4520, CFS & DST #1 @ 4590, short trip, CTCH, drop survey, TOH, TIH, testing, TOH TIH, CTCH, resume drilling, Morrow @ 4586
5/26/2016	4700	Mississippian @ 4638, circ @ 4640, Total Depth @ 4740, CTCH, short trip, CTCH, TOH for electrical logs, rig up loggers, logging, evaluate e-logs, rig down loggers, after evaluation of Electrical logs DST results and Geological report, it was recommended and agreed upon by all interested parties to cease drilling operations on the Holcomb 1-7-14-34 test well to plug and abandon as a dry hole, off location, return to Great Bend, Ks office
5/26/2016		finish and complete Geological Report for distribution

Coachman Energy Operating Company, LLC

WELL COMPARISON SHEET

DRILLING WELL					COMPARISON WELL				COMPARISON WELL			
Holcomb 1-7-14-34					Gordon # 1				Bouziden "B" # 1			
545" FSL & 430" FWL					NW - NE - NE				SE - NW - NE			
Sec. 07 - T14S - R34W					Sec. 07 - T14S - R34W				Sec. 36 - T13S - R34W			
3040 KB					3016 KB				2911 KB			
					Structural Relationship				Structural Relationship			
Formation	Sample	Sub-Sea	Log	Sub-Sea	Log	Sub-Sea	Sample	Log	Log	Sub-Sea	Sample	Log
Anhydrite	2425	615	2426	614	2399	617	-2	-3	2309	602	13	12
Base Anhydrite	2445	595	2446	594	2421	595	0	-1	2330	581	-7	13
Lower Topeka	3630	-590	3636	-596	3610	-594	4	-2	3506	-595	5	-1
King Hill	3740	-700	3740	-700	3725	-709	9	9	3618	-707	7	7
Queen Hill	3800	-760	3798	-758	3779	-763	3	5	3683	-772	12	14
Heebner	3852	-812	3851	-811	3836	-820	8	9	3737	-826	14	15
Toronto	3873	-833	3874	-834	3853	-837	4	3	3756	-845	12	11
Lansing	3904	-864	3906	-866	3878	-862	-2	-4	3789	-878	14	12
Muncie Creek	4074	-1034	4074	-1034	4051	-1035	1	1	3953	-1042	8	8
BKC/Pleasanton	4248	-1208	4244	-1204	4222	-1206	-2	2	4117	-1206	-2	2
Marmaton	4290	-1250	4288	-1248	4269	-1253	3	5	4166	-1255	5	7
Altamont	4346	-1306	4337	-1297	4309	-1293	-13	-4	4214	-1303	-3	6
Pawnee	4384	-1344	4378	-1338	4358	-1342	-2	4	4258	-1347	3	9
Fort Scott	4420	-1380	4416	-1376	4394	-1378	-2	2	4297	-1386	6	10
Upper Cherokee	4438	-1398	4436	-1396	4413	-1397	-1	1	4316	-1405	7	9
Lower Cherokee	4471	-1431	4468	-1428	4449	-1433	2	5	4348	-1437	6	9
Johnson zone	4514	-1474	4514	-1474	4499	-1483	9	9	4397	-1486	12	12
Morrowian	4586	-1546	4582	-1542	4560	-1544	-2	2	4462	-1551	5	9
Mississippian	4638	-1598	4637	-1597	4642	-1626	28	29	4523	-1612	14	15
Total Depth	4740	-1700	4739	-1699	4741	-1725	25	26	4605	-1694	-6	-5

ROCK TYPES

 Lmst fw7>	 shale, gry	 shale, red	 Ss
 shale, grn	 Carbon Sh	 Shcol	 Slst

ACCESSORIES

MINERAL

- Argillaceous
- ⊥ Calcareous
- ▲ Chert, dark
- P Pyrite
- Sandy
- Silty

FOSSIL

- F Fossils < 20%
- ⊕ Oolite
- ⊕ Oomoldic

STRINGER

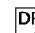

- Shale

TEXTURE

- C Chalky

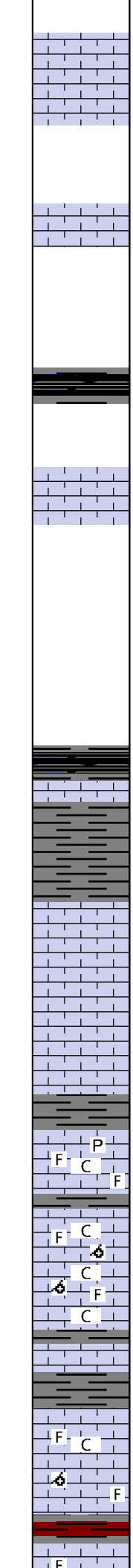
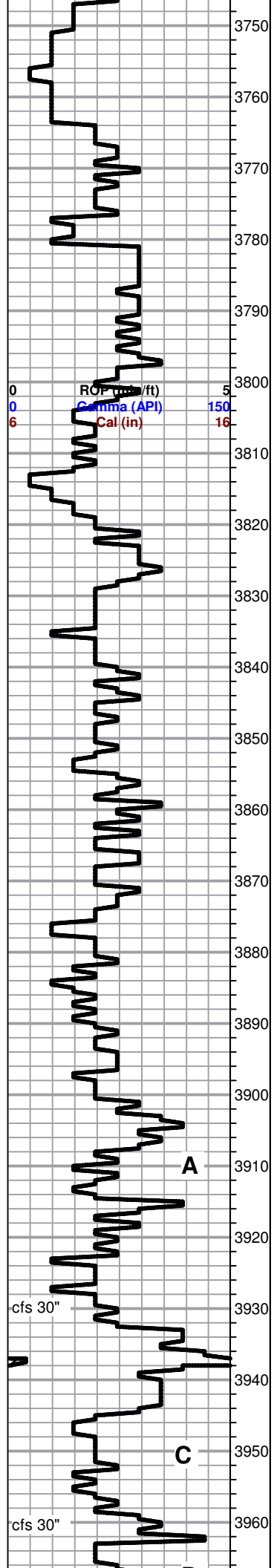
OTHER SYMBOLS

MISC

-  Daily Report
-  Digital Photo

DST

-  DST Int
-  DST alt



Queen Hill 3800 -760

Heebner 3852 -812

Toronto 3873 -833

Lansing 3904 -864

limestone, lt crm-tan, dse, sli chlky, rextalzed, fos, scatt fos por, trc pyrite, ns noted, limestone, lt gry-wht, dse, sli chlky, sli rextalzed, scatt fos por, ns noted

limestone, wht-lt crm,dse, sli fos/ooc, rextalzed, pscatt por, wht chlk, ns noted

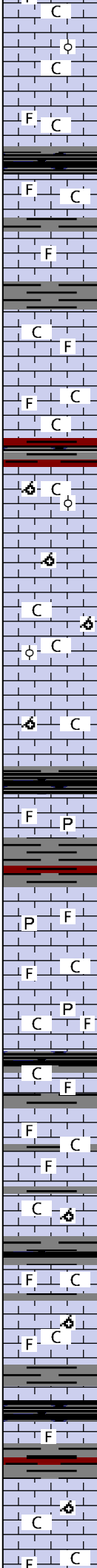
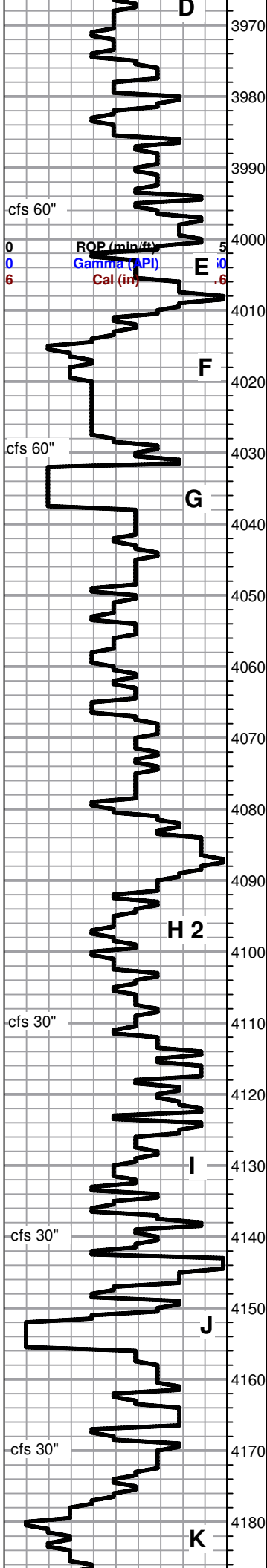
same

limestone, lt gry-crm, dse, sli rextalzed, sli fos, sli chlky, pscatt por, ns noted, sli incr sh

limestone, lt gry-tan to wht-lt crm, dse, xtaln, sli rextalzed, fos/ooc, pvls por, ns noted, incr rd sh

limestone, lt crm-tan, dse, sli chlky, rextalzed, sli fos/ooc, pvls por, ns

0	Total Gas (units)	50
0	C1 (units)	50
0	C2 (units)	50
0	C3 (units)	50
0	C4 (units)	50



noted

same, lt crm-tan to crm-gry, sli chlky, ns noted

limestone, lt gry-wht, dse, sli chlky, sli rextalzed, sli fos, pvls por, few spls w/questionable trc stn, no odor or free oil noted

limestone, lt gry-crm, dse, xtaln, sli rextalzed, sli fos, sli chlky, incr blk carb sh

Resume drilling @ 0100 hrs on 05-23-2016

limestone, lt crm-gry, dse, xtaln, sli rextalzed, sli fos, pvls por, ns noted, abdt vcs

limestone, lt gry-crm to gry, xtaln, sli chlky, sli rextalzed, sli fos, pvls por, ns noted

limestone, wht-lt crm, dse, chlky, sli rextalzed, sli fos, pvls por, ns noted, wht chl, influx dk gry-blk & rd sh

limestone, lt crm-crm, dse, sli chlky, rextalzed, ooc/ool, gd vis ooc/ool por, ns noted wht chl

same, less vis por, incr sli ooc/fos, scatt por, ns noted, less chl

limestone, lt gry to gry-crm, dse, sli chlky, xtaln, sli rextalzed, scatt ooc/fos, less vis por, ns noted

limestone, lt gry-wht to gry-crm, dse, sli chlky, xtaln, trc fos, pvls por, few scatt ooc, ns noted

Muncie Creek

blk carb sh influx, limestone, lt crm to crm-gry, dse, xtaln, sli rextalzed, sli fos, sli pyritic, pvls por, ns noted

limestone, lt gry-wht, dse, xtaln, sli fos, sli rextalzed, sli pyritic, pvls por, few scatt, ns noted

same, sli incr chl

blk carb sh

limestone, lt gry-wht to gry-crm, dse, chlky, rextalzed, fos, pvls por, ns noted

limestone, lt crm-gry, dse, fxtaln, sli rextalzed, sli fos, pvls por, few scatt fos por, ns noted

same, few lt crm ooc w/gd vis por, ns noted

blk-gry sh

limestone, lt crm-gry, dse, sli rextalzed, sli fos, sli chlky, pvls por, ns

limestone, lt crm, dse, rextalzed, ooc, trc chlky, gd vis por, ns noted

limestone, lt crm-gry to gry-crm, dse, xtaln, sli rextalzed, sli fos, some sli chlky, scatt fos por to pvls por, ns noted

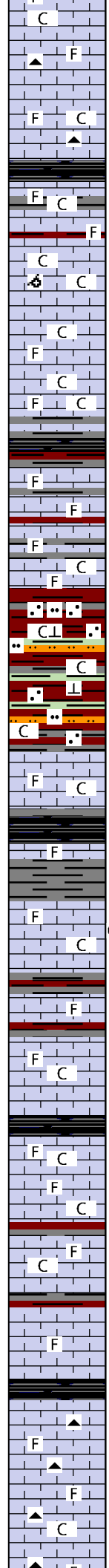
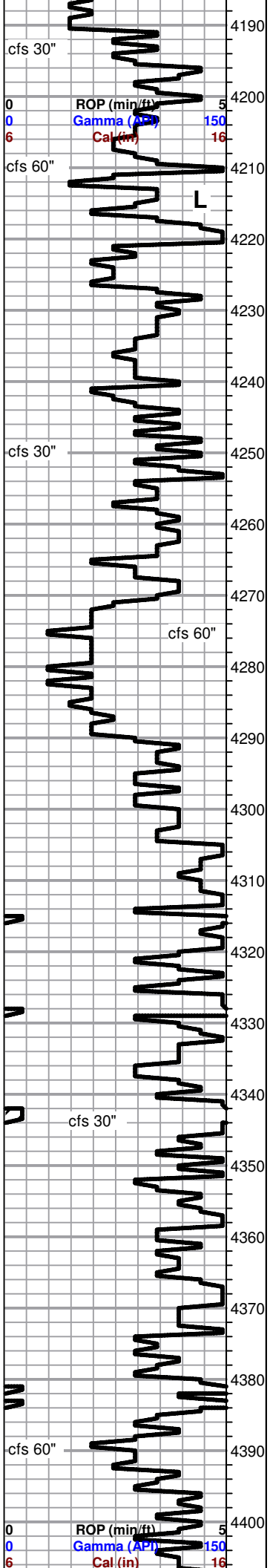
blk carb sh

abdt gry & rd sh

limestone, lt gry, dse, chlky, rextalzed, ooc, fair vis ooc por, ns noted, abdt wht chl

short trip @ 3996

0	Total Gas (units)	50
0	C1 (units)	50
0	C2 (units)	50
0	C3 (units)	50
0	C4 (units)	50



limestone, lt crm to gry-crm, dse, xtaln, sli fos, pscatt por, abdt wht chlk

limestone, lt gry-wht, dse, fxtaln, sli rextalzed, sli fos, sli chlky, sli chrt, lt gry-wht, pvls por, ns noted

limestone as above, sli incr chl & sh

blk carb sh

limestone, lt gry-crm, dse, sli chlky, sli rextalzed, sli fos, pvls por

limestone, lt crm, dse, chlky, ooc, sli rextalzed, scatt vis por, ns noted

limestone, lt gry-crm, dse, xtaln, sli fos, sli chlky, less vis por, ns

limestone, lt crm-gry, dse, chlky, sli rextalzed, sli fos, pvls por, some scatt fos por, ns noted

BKC 4248 -1208
incr vcs, gry, blk, rd

limestone, dk crm-gry, dse, xtaln, sli rextalzed, sli fos, pvls por, ns

limestone, lt gry-crm aa, sli chlky, sli incr sh, ns noted

lg influx rd to rdish-brn, sli sdy, silty, chlky matl

rd matl, sli sdy, shly, denser, sli calc

gry & grn-gry matl, soft, mushy, silty, chlky, marly, little to no sd

Marmaton 4290 -1250

limestone, crm to tan, dse, fxtaln, sli rextalzed, sli fos, sli chlky, pvls por, ns noted

blk carb sh

incr sh, limestones aa

limestone, lt crm-gry, dse, xtaln, sli rextalzed, sli fos, sli chlky, pvls por, 2 spls w/dk fo specks vis, sli incr w/brkn, fo does not fluor, no odor noted

limestone, lt gry-crm, dse, xtaln, sli rextalzed, trc fos, vp vis por, ns

limestone, lt gry-wht, dse, sli chlky, trc fos, sli rextalzed, pvls por, ns, incr sh

Altamont 4346 -1306

limestone, lt gry & lt crm, dse, rextalzed, chlky, fos, pvls por, ns noted, incr vcs, rd, gry, grn, blk

limestone aa, less chlky, sli fos, pvls por, ns noted

limestone, gry, dse, fxtaln, sli rextalzed, trc fos, vpvis por, ns noted

Pawnee 4384 -1344

limestone, lt crm to crm-gry, dse, fxtaln, sli rextalzed, sli fos, pvls por, ns noted, chert, lt gry trans

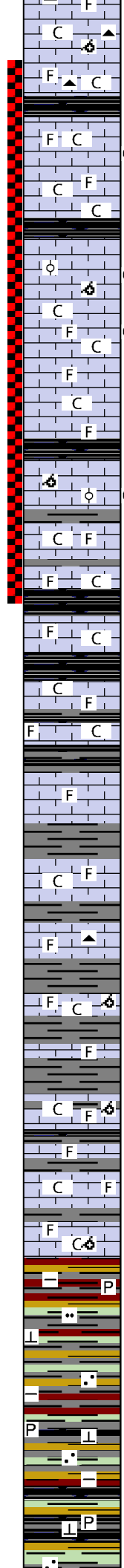
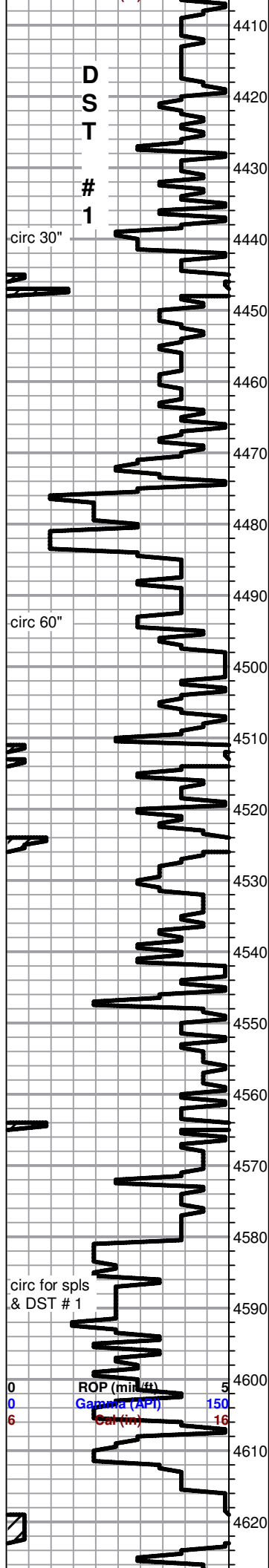
Resume drilling @ 1645 hrs on 05-24-2016

limestone, lt & dk gry to gry-crm, dse, fxtaln, sli rextalzed, trc chlky, trc fos, pvls por, ns noted, lt gry trans chert aa

0	Total Gas (units)	50
0	C1 (units)	50
0	C2 (units)	50
0	C3 (units)	50
0	C4 (units)	50

Bit trip: .58 ft short
Dev survey: 1.75 deg

0	Total Gas (units)	50
0	C1 (units)	50
0	C2 (units)	50



limestone, lt & dk gry-crm, dse, sli chlky, xtaln, sli rextalzed, sli fos/oc, pvls por ns noted, lt gry chert aa, sli incr vcs

Ft. Scott 4420 -1380

limestone, lt gry to lt gry-crm, dse, sli rextalzed, sli fos, sli chlky, pscatt por, few spls w/dk fo specks vis, sli incr w/brkn

limestone, lt gry-wht to gry-crm, dse, chlky, sli fos, pvls por ns noted

Upper Cherokee 4438 -1398

limestone, lt crm to dk crm, vdse, rextalzed, xtaln, ooc, w/pvls por, fo specks vis, incr fo w/trc gas bubble, ft odor w/brkn

limestone, wht-lt gry, dse, chlky, sli rextalzed, trc fos, scatt fos por, dk stn & fo vis, incr fo, trc gas bubble & ft odor w/brkn

limestone, lt & dk crm-gry, dse, sli chlky, sli rextalzed, sli fos, pvls por, ns noted

same, incr sh

Lower Cherokee 4471 -1431

limestone, dk crm-tan, dse, xtaln, sli rextalzed, ooc, w/scatt ooc por, stn & fo vis in por, incr fo, trc gas, fair odor w/brkn, sheen in cup

limestone, lt crm-gry, dse, chlky, sli rextalzed, sli fos, pvls por, ns

limestone, lt gry to wht-crm, dse, chlky, xtaln, sli fos, pvls por, ns blk carb sh

limestone, lt gry & lt crm, dse, sli rextalzed, sli chlky, sli fos, pvls por, ns noted

limestone, lt gry-crm, dse, sli chlky, sli rextalzed, trc fos, pvls por, ns noted

Johnson zone 4514 -1474

limestone, lt gry-wht to gry-crm, dse, xtaln, sli rextalzed, sli fos, pvls por, ns noted

limestone, crm-gry, dse, xtaln, sli rextalzed, sli fos, sli chlky, pvls por, ns noted

limestone, dk crm to tan, dse, fxtaln, sli rextalzed, trc fos, vpvl por, lt crm to tan trans chert, ns noted

limestone, lt gry-wht, dse, chlky, sli rextalzed, ooc/fos, pvls por, ns noted, wht chlky

limestone, lt crm-gry, dse, chlky, sli rextalzed, sli ooc/fos, pvls por ? dos, wht chlky

limestone, lt crm-gry, dse, sli chlky, sli rextalzed, sli fos, pvls por, ns noted

limestone, lt gry-crm, dse, sli rextalzed, sli fos/oc, sli chlky, pvls por, ns noted, few rd sh in circ spls

Morrow 4586 -1546

Resume drilling @ 2300 hrs on 05-25-2016

vari colored shales, rd, grn, yel, olive drab, blk, gry, some argil, calc, pyritic, silty, sdy

gry sh, argil, rd sh, silty

olive drab, sli calc

blk sh, pyritic

grn sh, vcalc, sli sdy, dse

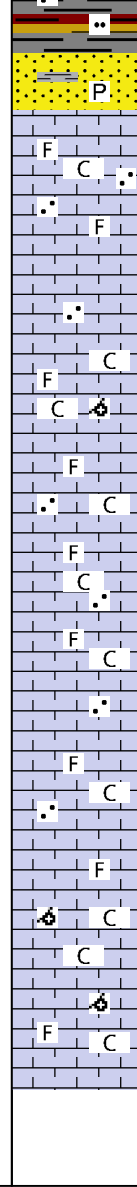
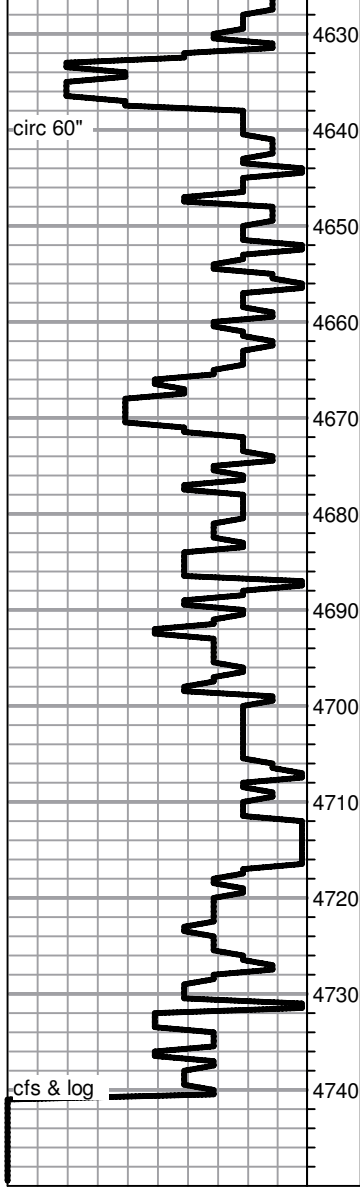
0 C3 (units) 50
0 C4 (units) 50

DST #1-Holcomb 1-7.jpg

DST # 1 4415-90 Straddle
Times: 30-45-45-60
IF: surf blow - died 12", NR
FF: no blow - no return
Rec: 5 ft mud
IFP: 55-47# ISIP: 1145#
FFP: 56-58# FSIP: 1120#

Dev survey: 2.25 deg

0 Total Gas (units) 50
0 C1 (units) 50
0 C2 (units) 50
0 C3 (units) 50
0 C4 (units) 50



sandstone, wht clstrs, calc, vf rnded, clear qtz, ns noted sandstone, gry clstrs, non-calc, f-lg sub-ang, clear qtz, trc pyritic, blk sh inclusions, ns noted

Mississippian 4638 -1598

limestone, lt crm to crm-gry, dse, xtaln, sli rextalzed, sli fos, sli chlky, pvls por, ns noted

limestone aa, incr lt gry, vf, vcalc sdy limestone, pvls por, ns noted

same, less sd, incr limestone aa

limestone, lt gry-crm, mottled, dse, chlky, sli xtaln, rextalzed fos/oc pvls, scatt fos por, ns noted

limestone, lt crm-wht, dse, sli vf sdy, chlky, fxtaln, sli rextalzed, rextalzed trc fos, pvls por, ns noted

limestone, lt crm-wht, dse, chlky, xtaln, sli fos, sli rextalzed, pvls por ns noted, less sdy, sli incr dk gry-blk sh

limestone aa, less chlky, less sdy, less vis por, ns noted

same

limestone, lt crm, dse, chlky, rextalzed, xtaln, ooc, pvls por, ns noted

limestone same, less ooc, less chlky, sli incr gry to grn-gry sh, pvls por, ns noted

Rotary Total Depth 4740 -1700

Dev survey: 1.75 deg



**TRILOBITE
TESTING, INC.**

DRILL STEM TEST REPORT

Coachman Energy Operating Comp. LLC

7-14s-34w Logan, Ks

1125 17th st. Suite 410
Denver, Colo
80202
ATTN: Bruce Ard

Holcomb #1

Job Ticket: 61856

DST#: 1

Test Start: 2016.05.25 @ 13:25:16

GENERAL INFORMATION:

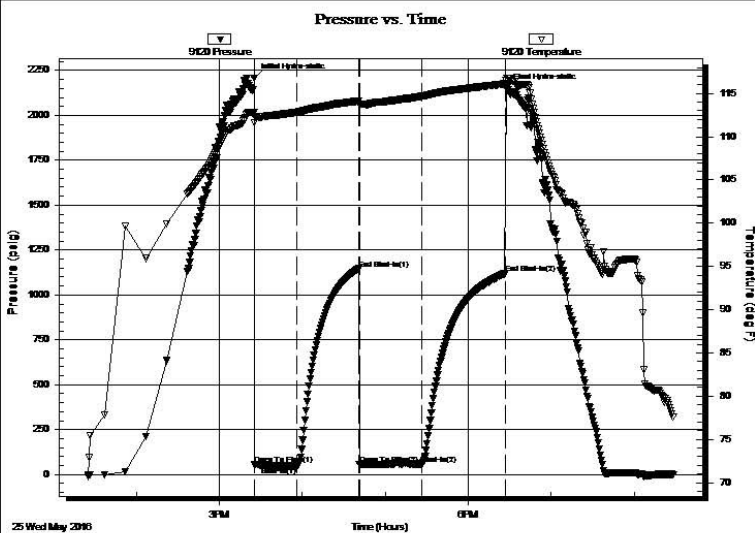
Formation: **Ft Scott, Cherokee**
 Deviated: No Whipstock: 0.00 ft (KB)
 Time Tool Opened: 15:25:31
 Time Test Ended: 20:28:16
 Interval: **4415.00 ft (KB) To 4490.00 ft (KB) (TVD)**
 Total Depth: 4590.00 ft (KB) (TVD)
 Hole Diameter: 7.88 inches Hole Condition: Fair
 Test Type: Conventional Straddle (Initial)
 Tester: Shane McBride
 Unit No: 84
 Reference Elevations: 3040.00 ft (KB)
 3035.00 ft (CF)
 KB to GR/CF: 5.00 ft

Serial #: 9120

Outside

Press@RunDepth: 58.72 psig @ 4416.00 ft (KB)
 Start Date: 2016.05.25 End Date: 2016.05.25 Capacity: 8000.00 psig
 Start Time: 13:25:16 End Time: 20:28:16 Last Calib.: 2016.05.25
 Time On Btm: 2016.05.25 @ 15:25:16
 Time Off Btm: 2016.05.25 @ 18:27:16

TEST COMMENT: Surface blow died in 12 min
 No return
 No blow
 No return



PRESSURE SUMMARY

Time (Min.)	Pressure (psig)	Temp (deg F)	Annotation
0	2207.42	112.84	Initial Hydro-static
1	55.96	111.61	Open To Flow (1)
31	47.37	112.80	Shut-In(1)
76	1145.42	114.12	End Shut-In(1)
76	56.98	113.65	Open To Flow (2)
121	58.72	114.66	Shut-In(2)
182	1120.47	116.10	End Shut-In(2)
182	2148.00	116.52	Final Hydro-static

Recovery

Length (ft)	Description	Volume (bbl)
5.00	mud 100%M	0.02

Gas Rates

Choke (inches)	Pressure (psig)	Gas Rate (Mcf/d)