



TRILOBITE TESTING, INC

DRILL STEM TEST REPORT

Herman L Loeb LLC
 PO Box 838
 Lawrenceville, IL 62439
 ATTN: Jon Christensen

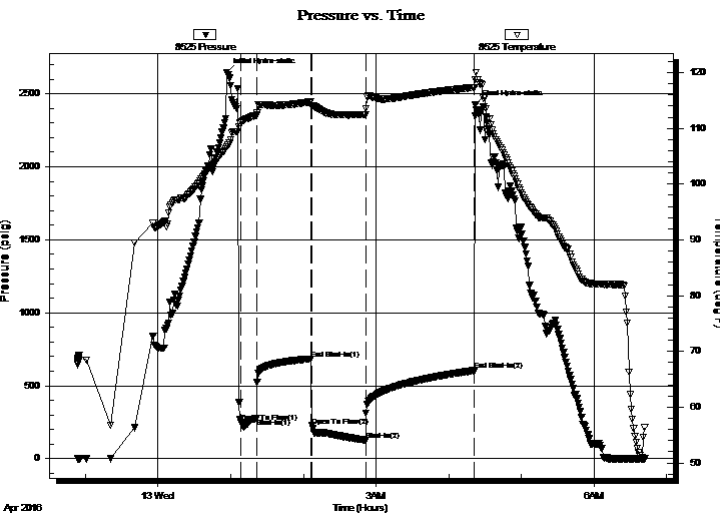
1-30S-19W Kiowa
Koger 3
 Job Ticket: 57986 **DST#: 2**
 Test Start: 2016.04.12 @ 22:53:34

GENERAL INFORMATION:

Formation: **Mississippi**
 Deviated: No Whipstock: ft (KB)
 Test Type: Conventional Bottom Hole (Reset)
 Time Tool Opened: 01:08:04 Tester: Leal Cason
 Time Test Ended: 06:42:34 Unit No: 74
 Interval: **4994.00 ft (KB) To 5038.00 ft (KB) (TVD)** Reference Elevations: 2281.00 ft (KB)
 Total Depth: 5038.00 ft (KB) (TVD) 2269.00 ft (CF)
 Hole Diameter: 7.88 inches Hole Condition: Good KB to GR/CF: 12.00 ft

Serial #: 8525 Inside
 Press@RunDepth: 126.02 psig @ 4995.00 ft (KB) Capacity: 8000.00 psig
 Start Date: 2016.04.12 End Date: 2016.04.13 Last Calib.: 2016.04.13
 Start Time: 22:53:35 End Time: 06:42:34 Time On Btm: 2016.04.13 @ 00:56:49
 Time Off Btm: 2016.04.13 @ 04:22:04

TEST COMMENT: IF: Strong Blow , BOB in 30 seconds, GTS in 6 minutes, Gauged & Caught Sample
 IS: Woud Not Bleed Off
 FF: Strong Blow , BOB % GTS Immediate, Gauged Gas
 FS: Would Not Bleed Off



PRESSURE SUMMARY

Time (Min.)	Pressure (psig)	Temp (deg F)	Annotation
0	2646.88	106.65	Initial Hydro-static
12	250.64	111.06	Open To Flow (1)
25	274.74	112.37	Shut-In(1)
69	683.96	114.76	End Shut-In(1)
70	225.43	113.78	Open To Flow (2)
115	126.02	112.45	Shut-In(2)
205	603.60	117.36	End Shut-In(2)
206	2424.19	118.74	Final Hydro-static

Recovery

Length (ft)	Description	Volume (bbl)
0.00	4869 GIP	0.00
125.00	GCM 5%G 95%M	0.61

* Recovery from multiple tests

Gas Rates

	Choke (inches)	Pressure (psig)	Gas Rate (Mcf/d)
First Gas Rate	0.13	170.00	69.02
Last Gas Rate	0.50	40.00	366.97
Max. Gas Rate	0.25	185.00	316.33



**TRILOBITE
TESTING, INC**

DRILL STEM TEST REPORT

FLUID SUMMARY

Herman L Loeb LLC
PO Box 838
Lawrenceville, IL 62439
ATTN: Jon Christensen

1-30S-19W Kiowa
Koger 3
Job Ticket: 57986 **DST#: 2**
Test Start: 2016.04.12 @ 22:53:34

Mud and Cushion Information

Mud Type: Gel Chem	Cushion Type:	Oil API:	deg API
Mud Weight: 9.00 lb/gal	Cushion Length: ft	Water Salinity:	ppm
Viscosity: 58.00 sec/qt	Cushion Volume: bbl		
Water Loss: 8.78 in ³	Gas Cushion Type:		
Resistivity: ohm.m	Gas Cushion Pressure: psig		
Salinity: 5000.00 ppm			
Filter Cake: 0.02 inches			

Recovery Information

Recovery Table

Length ft	Description	Volume bbl
0.00	4869 GIP	0.000
125.00	GCM 5%G 95%M	0.615

Total Length: 125.00 ft Total Volume: 0.615 bbl
Num Fluid Samples: 0 Num Gas Bombs: 0 Serial #:
Laboratory Name: Laboratory Location:
Recovery Comments:

