

**Janel Staab**  
Consulting Petroleum Geologist

2428 Toulon Ave  
Hays, KS 67601  
Phone: 785-625-4311  
Cell Phone: 785-635-1660

**GEOLOGIST'S WELL REPORT**

COMPANY Staab Oil Company #6037  
WELL Toulon Staab 1 A  
FIELD Schmeidler  
LOCATION (legal) SE-SW-SW-NE 2795' FSL 1990' FEL  
Section 30 TWP 12S RGE 17W  
(Map) 5 miles north of Hays on 183 to Hopewell  
East 3 miles to 280th. North 1/4 miles  
COUNTY Ellis STATE Kansas  
ELEVATION: 2099 K.B., 2094 G.L.

Depths measured from Kelly Bushing

A. P. I. NUMBER 15-051-26825-00-00

GEOLOGY BY Janel Staab



# PERTINENT WELL DATA

CONTRACTOR Shields Drilling Company #5184

RIG #1 HYDRAULICS Beth 225 6x14x60

DRILL PIPE 4 1/2" X-H COLLARS 6 1/2" x 2 1/4"

CASING: SURFACE 8 5/8" - 219 w/ 150 common

PRODUCTION 5 1/2" - 3675' w/ 100 common

DRILLING FLUID: COMPANY Mud-Co/Service Mud Inc.

TYPE: Chemical

REMARKS: Full Service

DRILL STEM TESTS: COMPANY Trilobite Testing Inc

NUMBER OF TESTS 1

ELECTIC LOGS: COMPANY Cased Hole Solution

DETAIL (5") 3050' - RTD

TYPE DI, Comp N.O, Micro

DRILLING TIME FROM 3060' TO RTD

SAMPLE TIME FROM 3060' TO RTD

SUPERVISION FROM 3060' TO RTD

VERTICAL DEVIATION \_\_\_\_\_

PLUGGING REPORT \_\_\_\_\_

RESERVE PIT \_\_\_\_\_







# DRILL STEM TESTS

NO	INTERVAL	IFP/TIME	ISIP/TIME	FFP/TIME	FSIP/TIME	IFP/FHP	RECOVERY
1	LKC. 3503 - 3575	44- 73 1.5	1018  45	52- 121 1.5	-	1831 1757	10' mud
2							
3							
4							
5							
6							
7							
8							

### MUD RECORD

CHK	DEPTH	WT	VIS	FIL	CHL	YP	L.C.M
1	222						
2	1371	8.9	29	NC	9600	-	Nil
3	2427	10.0	31	NC	7600	-	Nil
4	3163	8.7	55	7.2	3000	28	2
5	3577	9.1	56	7.8	5400	25	1
6							
7							
8							
9							
10							
11							

### BIT RECORD

NO	SIZE	MAKE	TYPE	DEPTH	FEET	HOURS
1	12 1/4"	Mill tooth	RB	222	222	5 1/3
2	7 7/8	S.52	Reed	3675	3453	89 1/4
3						
4						
5						



# FORMATION TOPS & STRUCTURAL GEO

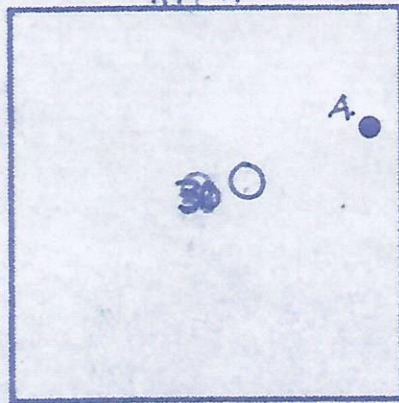
R17W

REFERRED TO:

A: Staab Oil Company  
Toulon-Staab #1

B: \_\_\_\_\_  
C: \_\_\_\_\_  
D: \_\_\_\_\_  
E: \_\_\_\_\_

T  
12  
S



STRATIGRAPHIC MARKERS	SUBJECT WELL			STRUCTURAL POSITION		
	SAMPLE	E. LOG	DATUM	A	B	C
Anhydrite	1327	1328	1771	+778		
Base	1370	1375	+724	+733		
Topeka	3087-957	3099	-1000	-993		
Heebner	3326-1227	3336	-1237	-1229		
Toronto	3349-1250	3358	-1259	-1255		
Lansing	3372-1273	3386	-1287	-1278		
BKC	3591-1492	3609	-1510	-1502		
Arbuckle	←			-1551		
T.O.	3675-1576	3686	-1587	-1631		

There was a discrepancy between the rig depth vs. log total depth of 11'. The rig ran 3 times and came up with same TO, each time. Due to extreme wind conditions we were unable to strap pipe. After running the DST it seemed likely that the RTO was correct.

\*Structural position of subject well as compared to refer

6 7



LOGY

### SUMMARY

The Toulon - Staab 1-A was drilled start April 4 2016 and plugged April 11, 2016 in E 5.30, T12.5 R17W using Shields Drilling Co

This location was picked using a 3-D well showed a high location to producer Toulon

The only shows were found in the LKC which were tested and had a negative result. The Arbuckle was never encountered. As a result it was determined to plug and abandon

*April Staab*

D E

total  
calculated  
to  
more

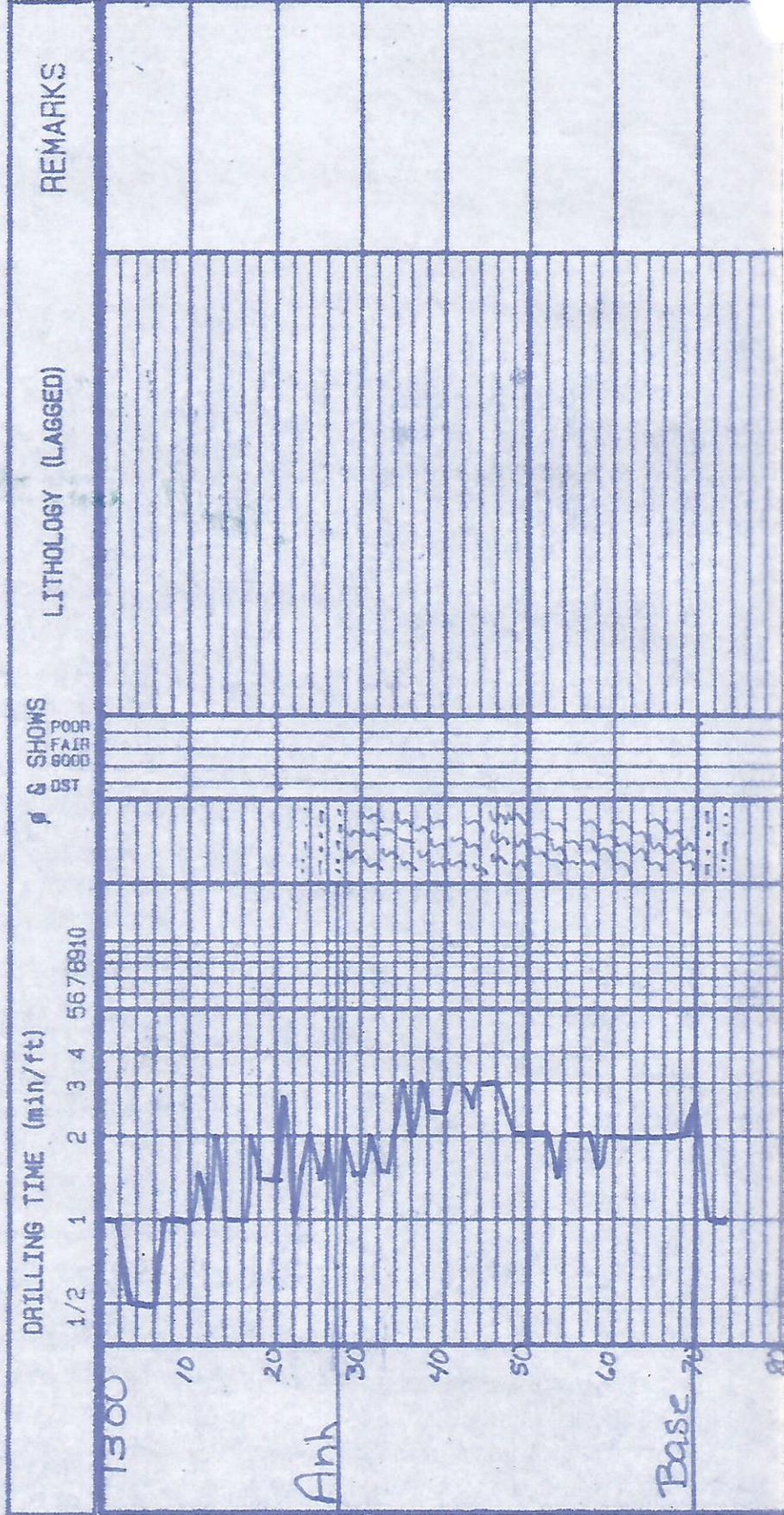
red well.



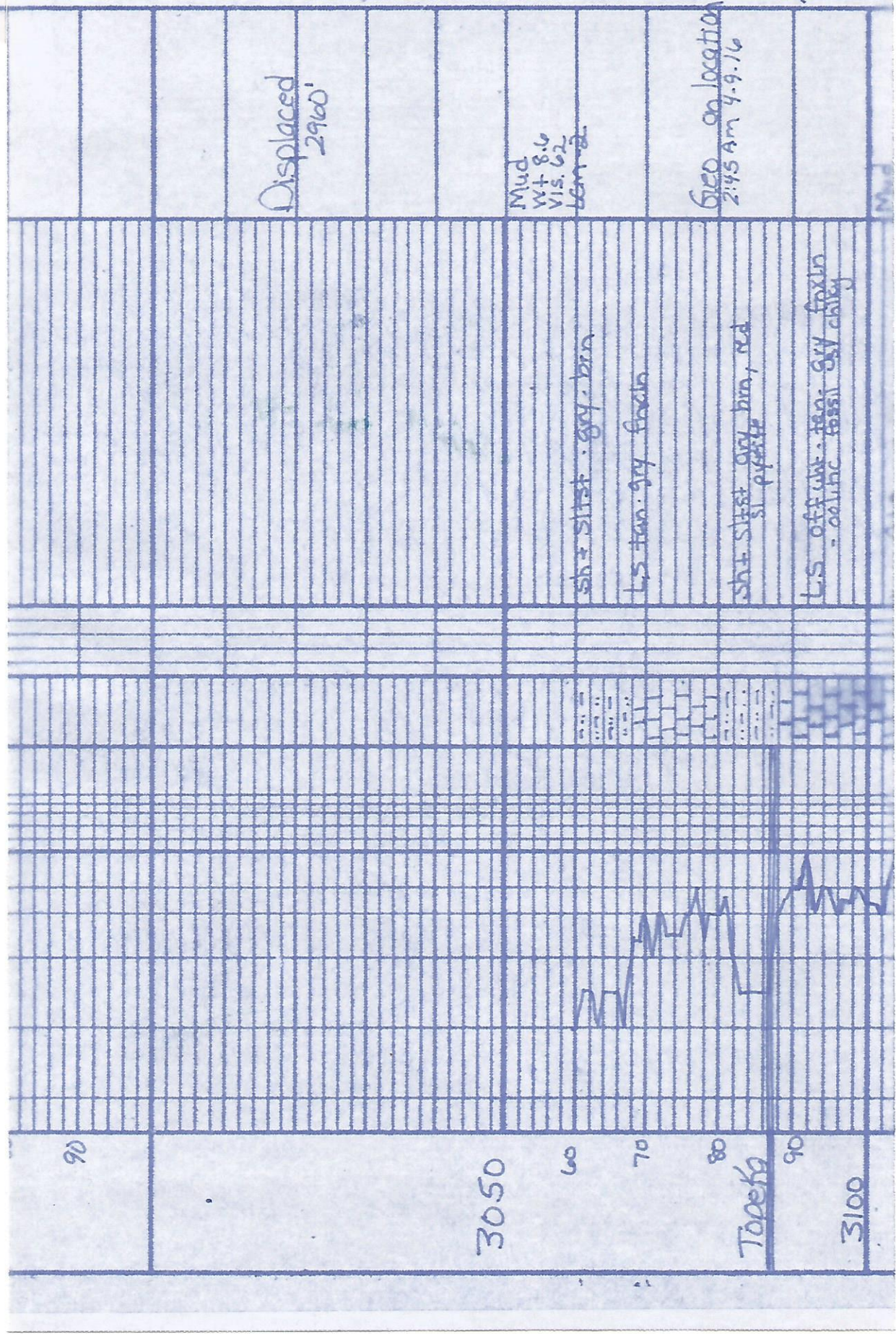
ing  
Lins County

nigh  
Staab

I-J zone  
Sult.  
result  
location







Displaced  
2960'

Mud  
wt 8.6  
vis 62

Geo on location  
2:45 AM 4.9.16

sh + siltst. gray-brown

L.S. tan. gray. fossiliferous

sh + siltst. gray-brown, red  
siltstone

L.S. off-white. tan. gray. fossiliferous. shaly

90

3050

60

70

80

Top of

90

3100



Ls. ALA

wt 8.1  
vis 60  
Lcm 2

Ls off wht. tan. gy. fossil  
st chky gy st pyrite

Ls. st. dblo. tan. gy. fossil  
w. fr. in. x. in. 2

sh. blk. gry

sh. st. st. - gry

Ls. - off wht. tan. gry. - brn  
fossil

Ls. off wht. tan. gry. brn  
fossil st fossil

sh. st. st. - gry. brn. gry

Ls. off wht. tan. gry. fossil  
fossil st chky

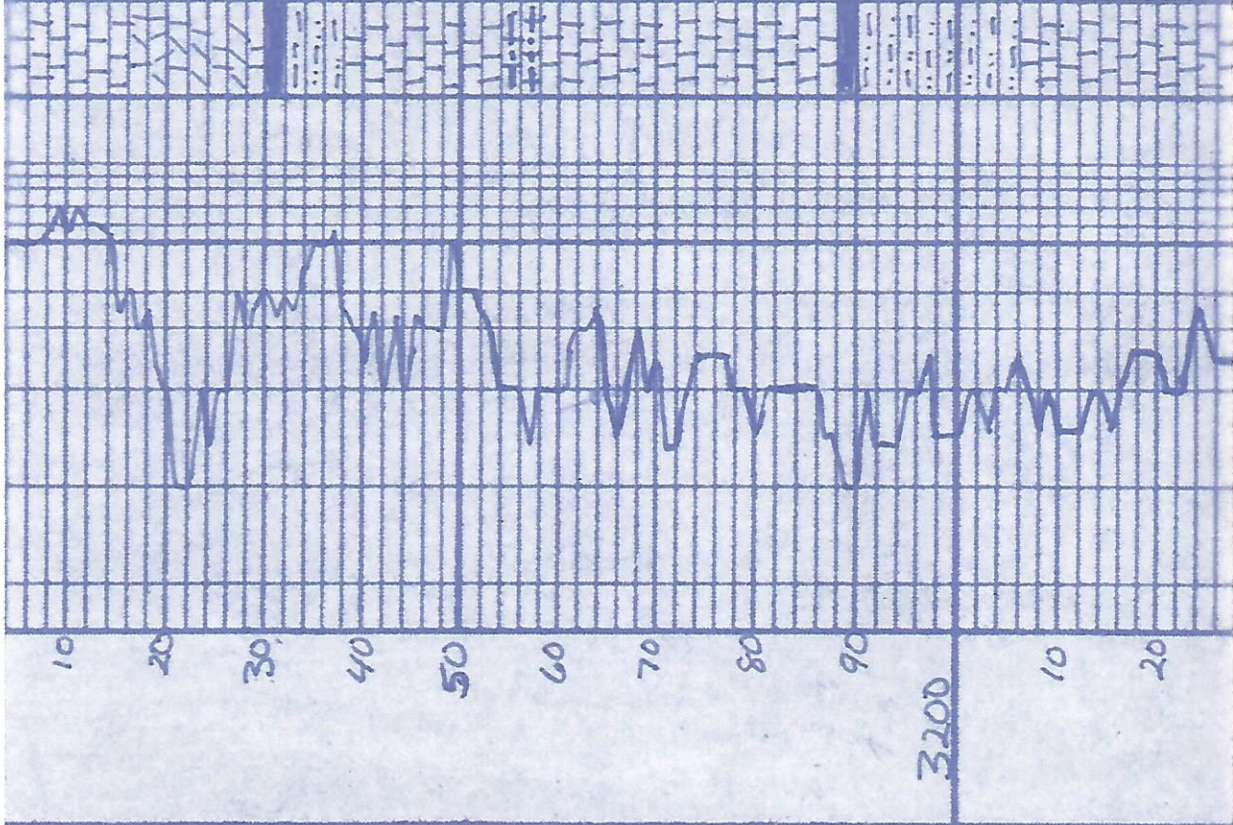
wt 8.6  
vis 64  
Lcm 2

Ls ALA

Sh. blk

sh. st. st. - gry. brn. red  
st chky pyrite

Ls. off wht. - gry. fossil

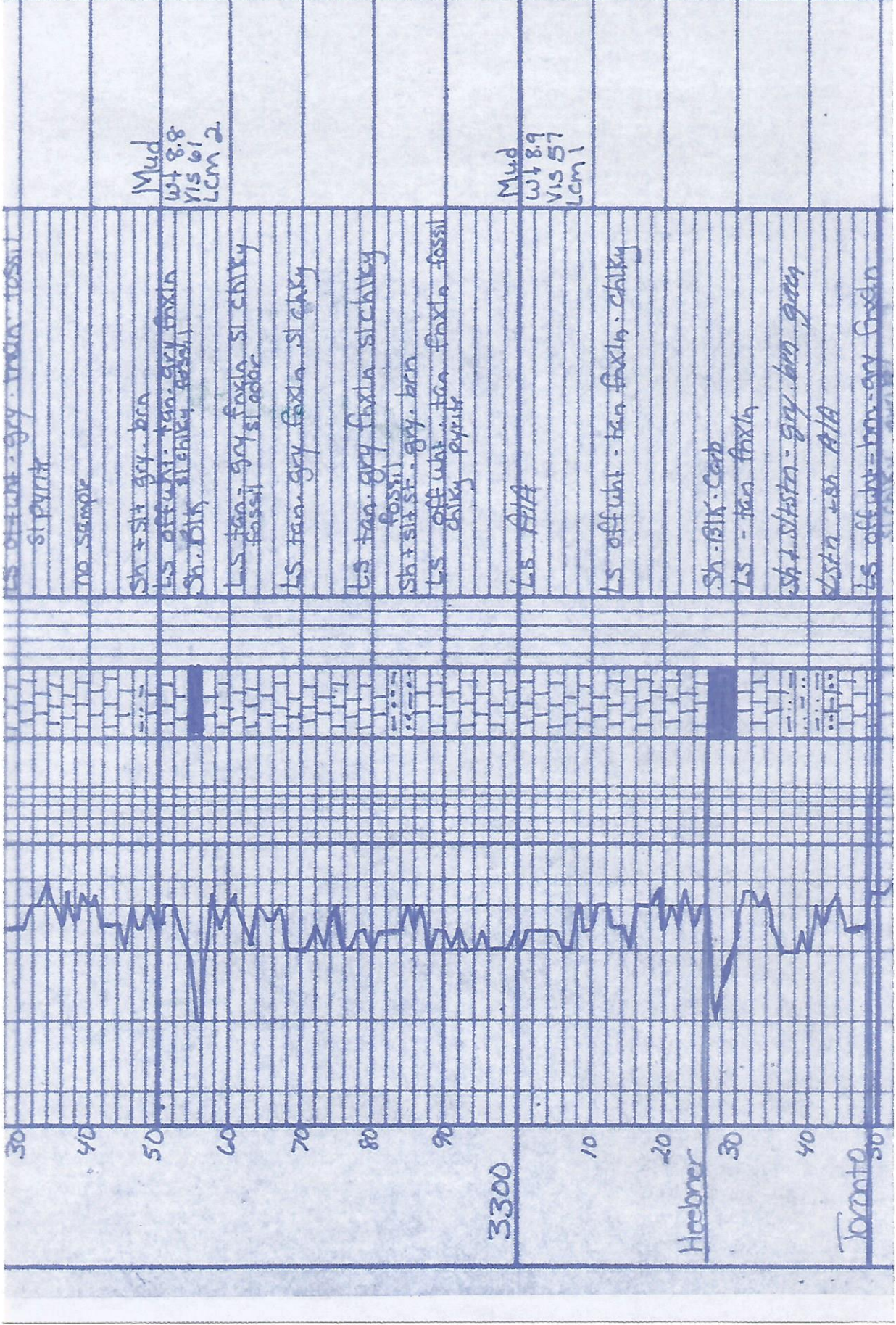


sh. blk

sh. blk

sh. blk





Mud  
wt 8.8  
vis 61  
LCM 2.

Mud  
wt 8.9  
vis 57  
LCM 1

L.S. off white - grey - medium - fossil  
st pyrite

no sample

Sh + silt + grey - brn  
L.S. off white - tan - grey - fossil  
Sh. blk

L.S. tan - grey - fossil - st - shaly  
fossil; st odor

L.S. tan - grey - fossil - st - shaly

L.S. tan - grey - fossil - st - shaly  
fossil

Sh + silt st - grey - brn

L.S. off white - tan - fossil - fossil  
shaly - pyrite

L.S. AIA

L.S. off white - tan - fossil - shaly

Sh - blk - Carb

L.S. - tan - fossil

Sh + silt - grey - brn - green

silt - sh - AIA

L.S. off white - brn - grey - fossil

3300

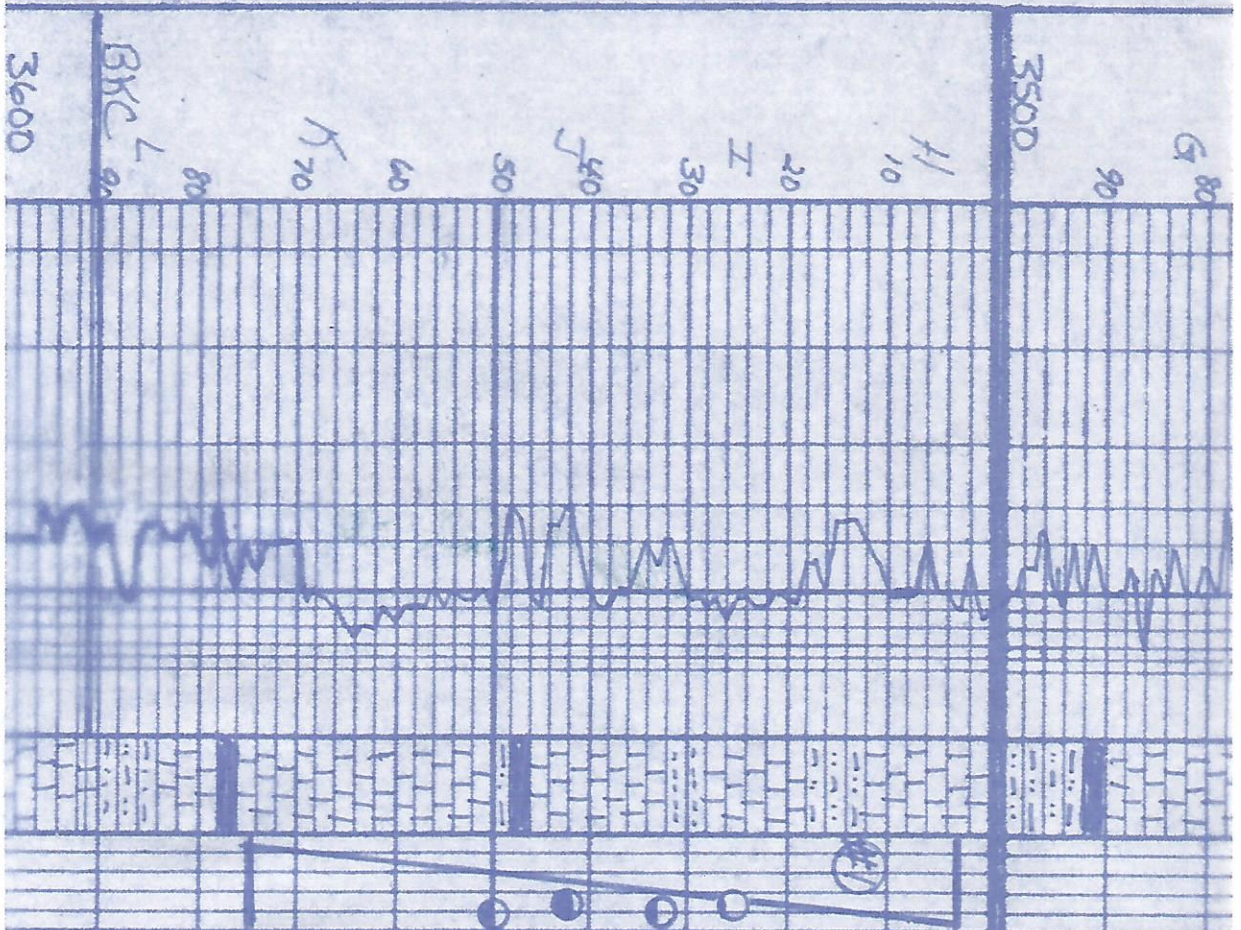
Hoebner

Toronto









LS off wht. fawn  
 sh. dk. gray  
 sh. + st. gray. rd. green

Mud.  
 wt. 9.1  
 vis 57  
 lcm 1

LS off wht. fawn  
 purple

wt. 9.1  
 vis 57  
 lcm 1

sh. + st. gray. rd. green  
 LS off wht. fawn

LS off wht. fawn poor - no intercept  
 no st. stain  
 good color no st. no st. no st.

LS off wht. fawn fair intercept  
 purple  
 good color

LS off wht. fawn. olive. fair. good  
 intercept. purple. good. stain  
 st. stain. no st. no st. no st.

LS off wht. fawn. olive. fair  
 intercept. purple. good. stain  
 good color

LS off wht. fawn. poor - no  
 intercept. no st. no st. no st. no st.

sh. dk. gray  
 LS off wht. fawn. poor intercept  
 no st. stain. no st. no st. no st.  
 no st. stain. no st. no st. no st.

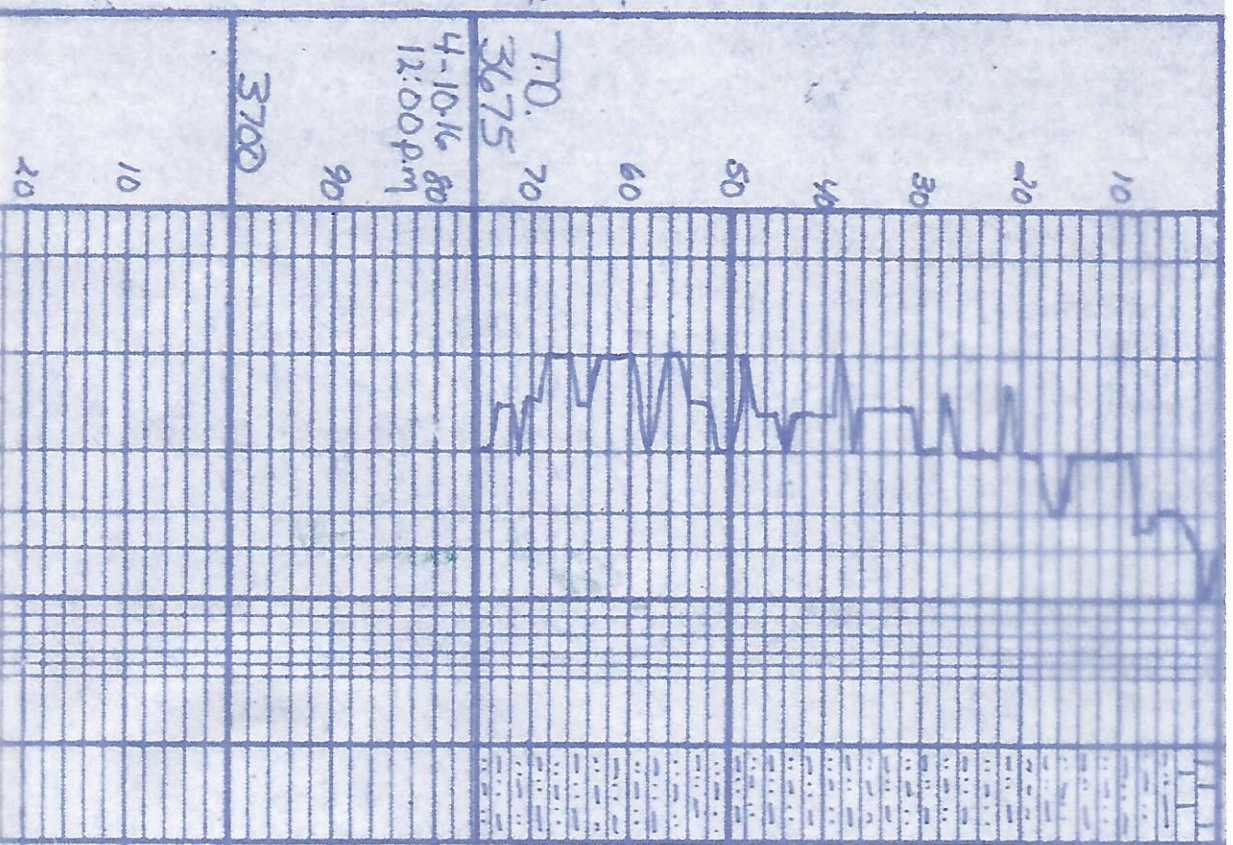
LS off wht. fawn

LS off wht. fawn

DST #1  
 3503-3575 LKc  
 I-J  
 15-45-1 out  
 Rec 10 mud

MUD  
 WT 9.3  
 VIS 55  
 LCM 1





sd. 1st. 2nd. 3rd. 4th. 5th. 6th. 7th. 8th. 9th. 10th. 11th. 12th. 13th. 14th. 15th. 16th. 17th. 18th. 19th. 20th. 21st. 22nd. 23rd. 24th. 25th. 26th. 27th. 28th. 29th. 30th. 31st. 32nd. 33rd. 34th. 35th. 36th. 37th. 38th. 39th. 40th. 41st. 42nd. 43rd. 44th. 45th. 46th. 47th. 48th. 49th. 50th. 51st. 52nd. 53rd. 54th. 55th. 56th. 57th. 58th. 59th. 60th. 61st. 62nd. 63rd. 64th. 65th. 66th. 67th. 68th. 69th. 70th. 71st. 72nd. 73rd. 74th. 75th. 76th. 77th. 78th. 79th. 80th. 81st. 82nd. 83rd. 84th. 85th. 86th. 87th. 88th. 89th. 90th. 91st. 92nd. 93rd. 94th. 95th. 96th. 97th. 98th. 99th. 100th.

ALA - washed brn - red

ALA

ALA

T.D. 70  
3675  
4-10-16 80  
12:00 PM

3700

10

20