

# T29S, R38W, 6th P.M.

## LEGEND:

└ = 90° SYMBOL

● = PROPOSED WELLHEAD.

▲ = SECTION CORNERS LOCATED.

\* = EXISTING WELLS

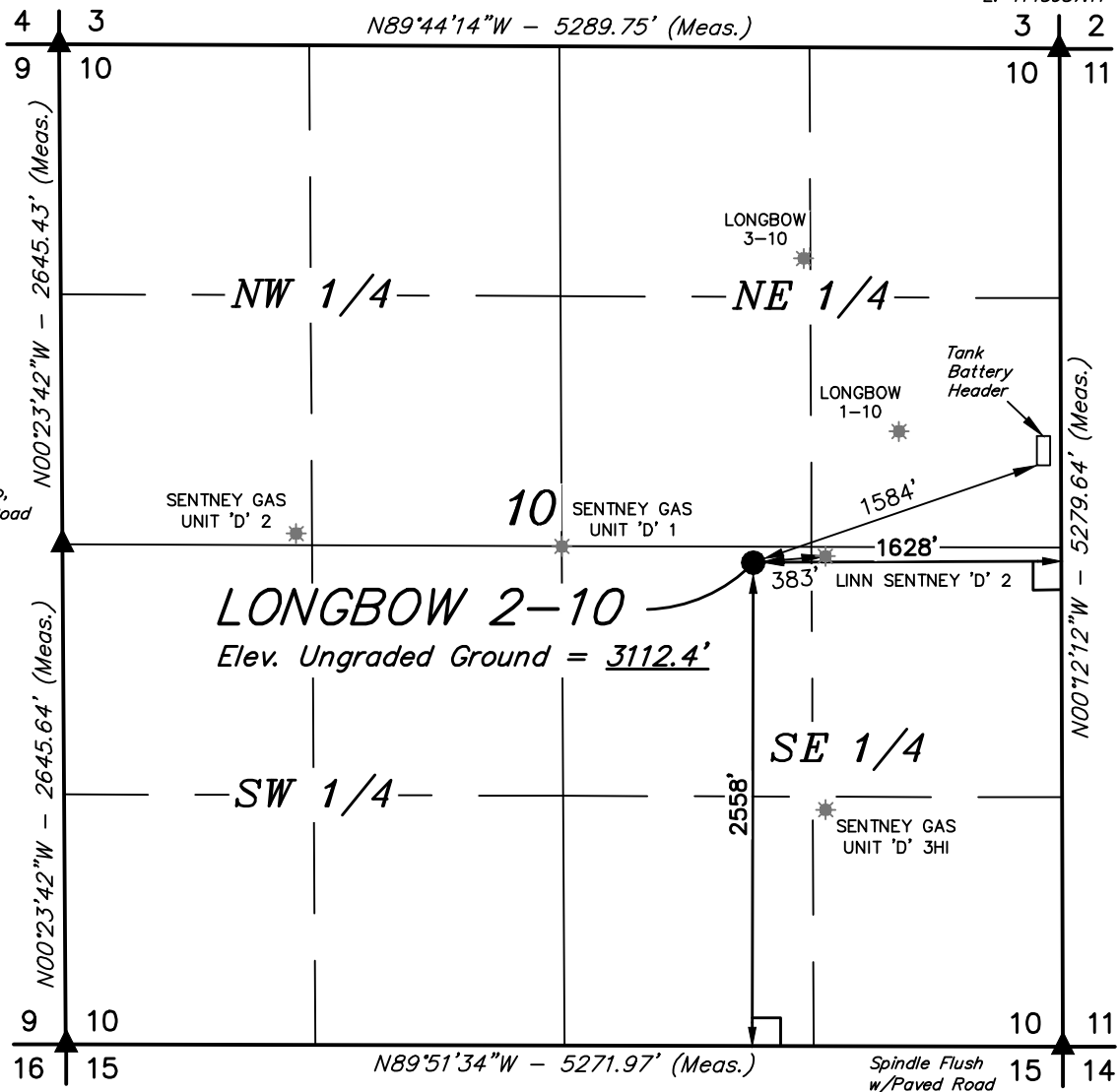
Yellow Plastic Cap,  
0.6' Below Road  
Intersection  
(SP NAD 27)  
(KANSAS SOUTH)  
N: 334285.69  
E: 1143987.11

Yellow Plastic Cap,  
1.0' Below Road  
Intersection  
(SP NAD 27)  
(KANSAS SOUTH)  
N: 334471.22  
E: 1138701.46

Yellow Plastic Cap,  
1.0' Below N/S Road  
(SP NAD 27)  
(KANSAS SOUTH)  
N: 331827.03  
E: 1138639.03

Blue Plastic Cap,  
0.5' Below Road  
Intersection  
(SP NAD 27)  
(KANSAS SOUTH)  
N: 329182.63  
E: 1138576.60

Spindle Flush  
w/Paved Road  
(SP NAD 27)  
(KANSAS SOUTH)  
N: 329008.96  
E: 1143844.87



### CERTIFICATE

THIS IS TO CERTIFY THAT THE ABOVE PLAT WAS PREPARED FROM FIELD NOTES OF ACTUAL SURVEYS MADE BY ME OR UNDER MY SUPERVISION AND THAT THE SAME ARE TRUE AND CORRECT TO THE BEST OF MY KNOWLEDGE AND BELIEF.



REGISTERED LAND SURVEYOR  
REGISTRATION NO. 45549  
STATE OF KANSAS

<b>NAD 83 (SURFACE LOCATION)</b>
LATITUDE = 37°32'24.23" (37.540064)
LONGITUDE = 101°27'32.74" (101.459094)
<b>NAD 27 (SURFACE LOCATION)</b>
LATITUDE = 37°32'24.16" (37.540044)
LONGITUDE = 101°27'31.13" (101.458647)
<b>STATE PLANE NAD 83 (KANSAS SOUTH)</b>
N: 1643970.90 E: 454512.45
<b>STATE PLANE NAD 27 (KANSAS SOUTH)</b>
N: 331618.97 E: 1142287.03

**BASIS OF BEARINGS**  
BASIS OF BEARINGS IS A G.P.S. OBSERVATION

### BASIS OF ELEVATION

THE BASIS OF ELEVATION, ELEV: 3088.60' WAS DERIVED FROM AN OPUS SOLUTION AT LAT: 37°38'57.14" LONG: 101°20'30.67" AND HAS A DATUM OF NAVD88.



**UELS, LLC**  
Corporate Office \* 85 South 200 East  
Vernal, UT 84078 \* (435) 789-1017

## MERIT ENERGY COMPANY

**LONGBOW 2-10**  
**2558' FSL 1628' FEL**  
**NW 1/4 SE 1/4, SECTION 10, T29S, R38W, 6th P.M.**  
**GRANT COUNTY, KANSAS**

<b>SURVEYED BY</b>	B.L.	07-15-16	<b>SCALE</b>
<b>DRAWN BY</b>	C.D.L.	07-19-16	1" = 1000'

## WELL LOCATION PLAT