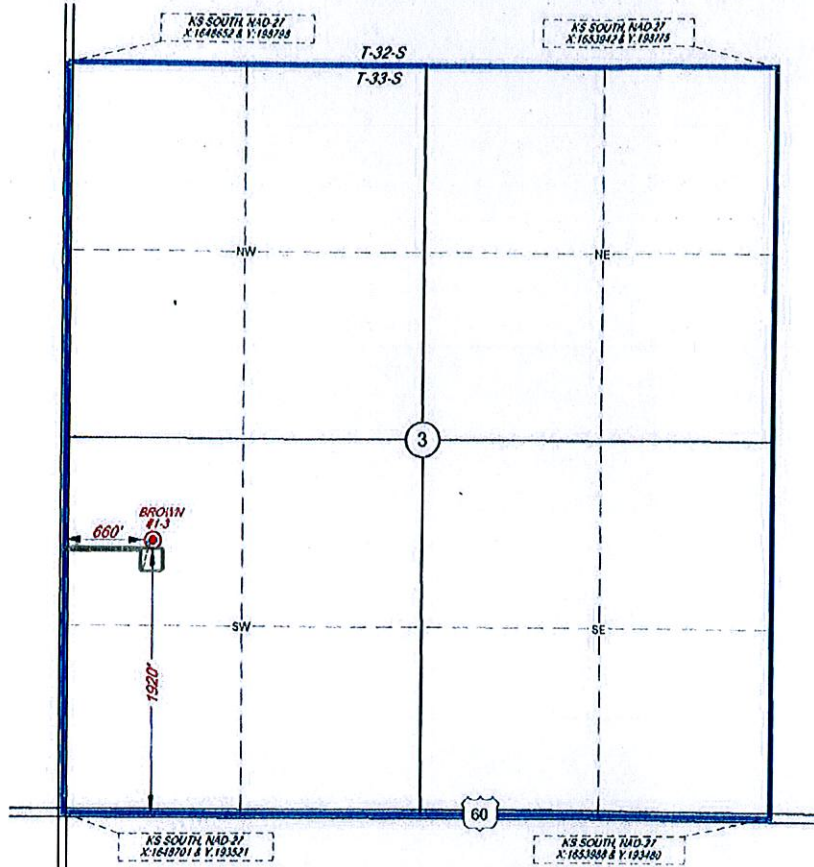
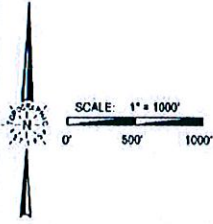


BROWN #1-3
 SECTION 3
 T-33-S, R-22-W 6TH PM
 CLARK COUNTY, KANSAS
 LOCATION PLAT



- Well Location
- Tank Battery
- Lease Road
- N/A Electric Line
- - - Pipeline

1920' FSL & 660' FWL
 SURFACE LOCATION
 LAT 37° 11' 49.81"
 LONG 99° 42' 13.88"
 KS SOUTH, NAD 27
 X: 164327.9 & Y: 19554.9

LEGEND	Footages	1920' FSL & 660' FWL	Elevation	1955'GR.
○ = PREVIOUSLY PLATTED WELL	Topography & Vegetation	PASTURE		
● = EXISTING WELL	Reference or Alternate Stakes Set	NONE SET		
⊙ = PROPOSED WELL	Best Accessibility to Location	FROM COUNTY ROAD WEST		
⊕ = PENETRATION POINT	Distance & Direction	±14 MILES NORTHEAST OF ENGLEWOOD, KANSAS		
⊖ = TERMINUS POINT				
⊗ = BOTTOM HOLE LOC.				
⊘ = SECTION CORNER				

NOTE
 BEARINGS AND DISTANCES ARE NAD-27 GRID KS. NORTH ZONE AND WERE DETERMINED BY GPS OBSERVATION.
 ORIGINAL DOCUMENT SIZE: 14" X 8.5"

TOPOGRAPHIC
 LOYALTY INNOVATION LEGACY
 2325 PERRYTON PARKWAY • PAMPA, TEXAS 79265
 TELEPHONE: (806) 655-2218 • FAX: (806) 655-2210
 TEXAS SURV REGISTRATION NO. 10042502
 WWW.TOPOGRAPHIC.COM

This plat DOES NOT represent a true Boundary Survey. The footages and ties shown are from lines of occupation, which may not be actual Property Lines

CERTIFICATE
 I, V. Lynn Bezner, a Registered Land Surveyor and an authorized agent of Topographic Land Surveyors, do hereby certify that the above described well location was surveyed and staked on the ground as shown.



V. Lynn Bezner, R.L.S. No. 1059

10-16-14

STRAT LAND EXPLORATION CO.	
DATE: OCTOBER 15, 2014	REVISION:
FILE: LO_BROWN_1_3	
DRAWN BY: K.YOUREE	