



# TEMPORARY ABANDONMENT WELL APPLICATION

OPERATOR: License# \_\_\_\_\_  
 Name: \_\_\_\_\_  
 Address 1: \_\_\_\_\_  
 Address 2: \_\_\_\_\_  
 City: \_\_\_\_\_ State: \_\_\_\_\_ Zip: \_\_\_\_\_ + \_\_\_\_\_  
 Contact Person: \_\_\_\_\_  
 Phone: ( \_\_\_\_\_ ) \_\_\_\_\_  
 Contact Person Email: \_\_\_\_\_  
 Field Contact Person: \_\_\_\_\_  
 Field Contact Person Phone: ( \_\_\_\_\_ ) \_\_\_\_\_

API No. 15- \_\_\_\_\_  
 Spot Description: \_\_\_\_\_  
 \_\_\_\_\_ - \_\_\_\_\_ - \_\_\_\_\_ - \_\_\_\_\_ Sec. \_\_\_\_\_ Twp. \_\_\_\_\_ S. R. \_\_\_\_\_  E  W  
 \_\_\_\_\_ feet from  N /  S Line of Section  
 \_\_\_\_\_ feet from  E /  W Line of Section  
 GPS Location: Lat: \_\_\_\_\_, Long: \_\_\_\_\_  
(e.g. xx.xxxxx) (e.g. -xxx.xxxxx)  
 Datum:  NAD27  NAD83  WGS84  
 County: \_\_\_\_\_ Elevation: \_\_\_\_\_  GL  KB  
 Lease Name: \_\_\_\_\_ Well #: \_\_\_\_\_  
 Well Type: (check one)  Oil  Gas  OG  WSW  Other: \_\_\_\_\_  
 SWD Permit #: \_\_\_\_\_  ENHR Permit #: \_\_\_\_\_  
 Gas Storage Permit #: \_\_\_\_\_  
 Spud Date: \_\_\_\_\_ Date Shut-In: \_\_\_\_\_

	Conductor	Surface	Production	Intermediate	Liner	Tubing
Size						
Setting Depth						
Amount of Cement						
Top of Cement						
Bottom of Cement						

Casing Fluid Level from Surface: \_\_\_\_\_ How Determined? \_\_\_\_\_ Date: \_\_\_\_\_  
 Casing Squeeze(s): \_\_\_\_\_ to \_\_\_\_\_ w / \_\_\_\_\_ sacks of cement, \_\_\_\_\_ to \_\_\_\_\_ w / \_\_\_\_\_ sacks of cement. Date: \_\_\_\_\_  
(top) (bottom) (top) (bottom)  
 Do you have a valid Oil & Gas Lease?  Yes  No  
 Depth and Type:  Junk in Hole at \_\_\_\_\_  Tools in Hole at \_\_\_\_\_ Casing Leaks:  Yes  No Depth of casing leak(s): \_\_\_\_\_  
(depth) (depth)  
 Type Completion:  ALT. I  ALT. II Depth of:  DV Tool: \_\_\_\_\_ w / \_\_\_\_\_ sacks of cement  Port Collar: \_\_\_\_\_ w / \_\_\_\_\_ sack of cement  
(depth) (depth)  
 Packer Type: \_\_\_\_\_ Size: \_\_\_\_\_ Inch Set at: \_\_\_\_\_ Feet  
 Total Depth: \_\_\_\_\_ Plug Back Depth: \_\_\_\_\_ Plug Back Method: \_\_\_\_\_

**Geological Data:**

Formation Name	Formation Top	Formation Base	Completion Information
1. _____	At: _____	to _____ Feet	Perforation Interval _____ to _____ Feet or Open Hole Interval _____ to _____ Feet
2. _____	At: _____	to _____ Feet	Perforation Interval _____ to _____ Feet or Open Hole Interval _____ to _____ Feet

UNDER PENALTY OF PERJURY I HEREBY ATTEST THAT THE INFORMATION CONTAINED HEREIN IS TRUE AND CORRECT TO THE BEST OF MY KNOWLEDGE

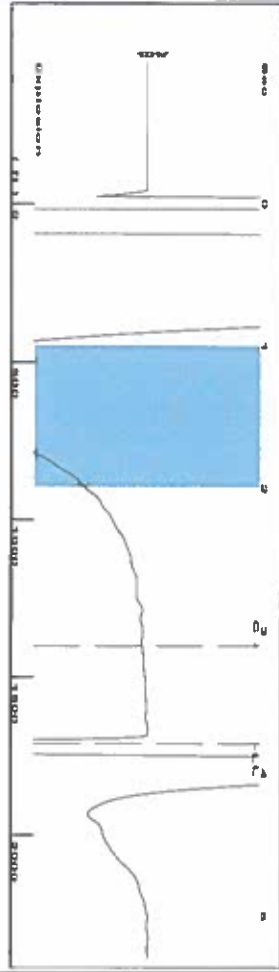
Submitted Electronically

<b>Do NOT Write in This Space - KCC USE ONLY</b>	Date Tested: _____	Results: _____	Date Plugged: _____	Date Repaired: _____	Date Put Back in Service: _____
	Review Completed by: _____ Comments: _____				
TA Approved: <input type="checkbox"/> Yes <input type="checkbox"/> Denied Date: _____					

**Mail to the Appropriate KCC Conservation Office:**

	KCC District Office #1 - 210 E. Frontview, Suite A, Dodge City, KS 67801	Phone 620.225.8888
	KCC District Office #2 / UPGS - 3450 N. Rock Road, Building 600, Suite 601, Wichita, KS 67226	Phone 316.630.4000
	KCC District Office #3 - 1500 SW Seventh Steet, Chanute, KS 66720	Phone 620.432.2300
	KCC District Office #4 - 2301 E. 13th Street, Hays, KS 67601-2651	Phone 785.625.0550

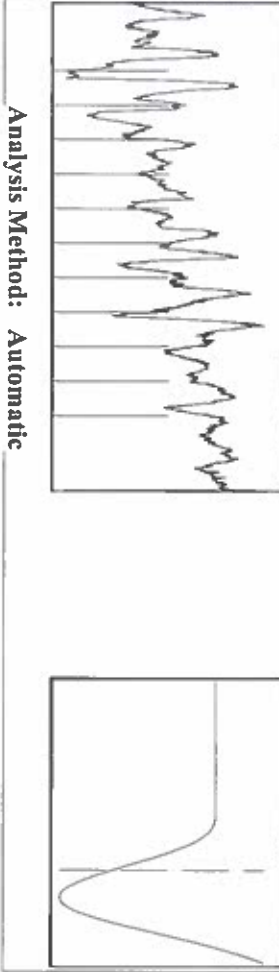
Group: TAD Well: SMU 313W (acquired on: 05/06/16 08:20:37)



Filter Type High Pass  
 Manual Acoustic Veloc 895.48 ft/s  
 Automatic Collar Count Yes  
 Manual JTS/sec 14.1243

| 1.0 to 2.0 (Sec) |

Time 3.791 sec  
 Joints 53.9516 Jts  
 Depth 1710.27 ft

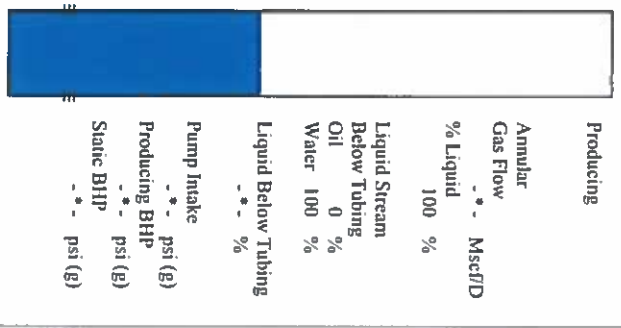


Analysis Method: Automatic

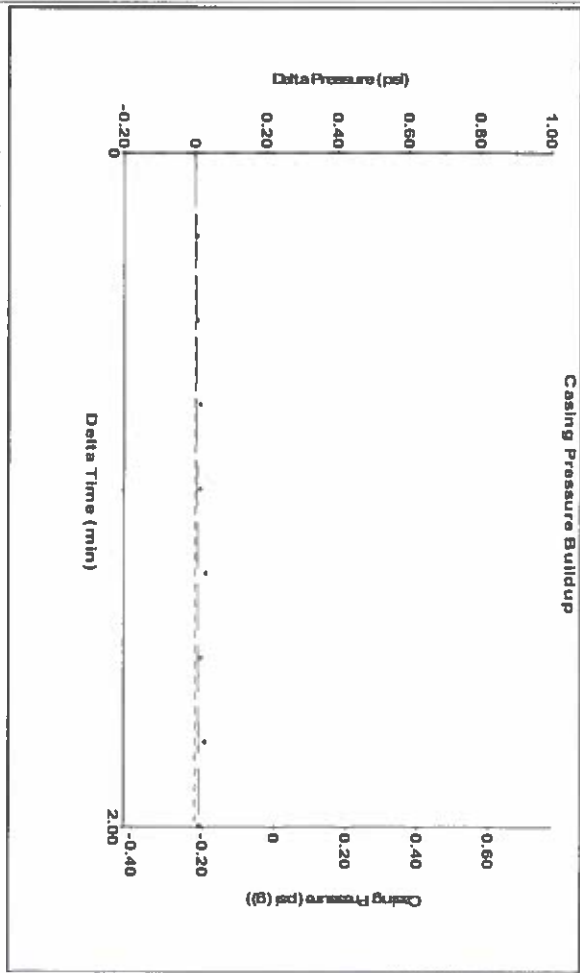
Group: TAD Well: SMU 313W (acquired on: 05/06/16 08:20:37)

Production	Potential	Casing Pressure	Producing
Oil -*- Water -*- Gas -*-	-*- BBL/D -*- BBL/D -*- Mscf/D	-0.2 psi (g) Casing Pressure Buildup 0.012 psi	Annular Gas Flow -*- Mscf/D % Liquid 100 %
IPR Method PBHP/SBHP Production Efficiency	Vogel -*- 0.0	2.00 min Gas/Liquid Interface Pressure -*- psi (g)	Liquid Stream Below Tubing Oil 0 % Water 100 %
Oil 40 deg API Water 1.05 Sp.Gr.H2O Gas 1.07 Sp.Gr.AIR	Liquid Level Depth 1710.27 ft	Pump Intake Depth 2796.00 ft Formation Depth 2830.00 ft	Liquid Below Tubing -*- % Pump Intake -*- psi (g) Producing BHP -*- psi (g) Static BHP -*- psi (g)
Acoustic Velocity 902.277 ft/s			

Formation Submergence  
 Total Gaseous Liquid Column HT (TVD)  
 Equivalent Gas Free Liquid HT (TVF)

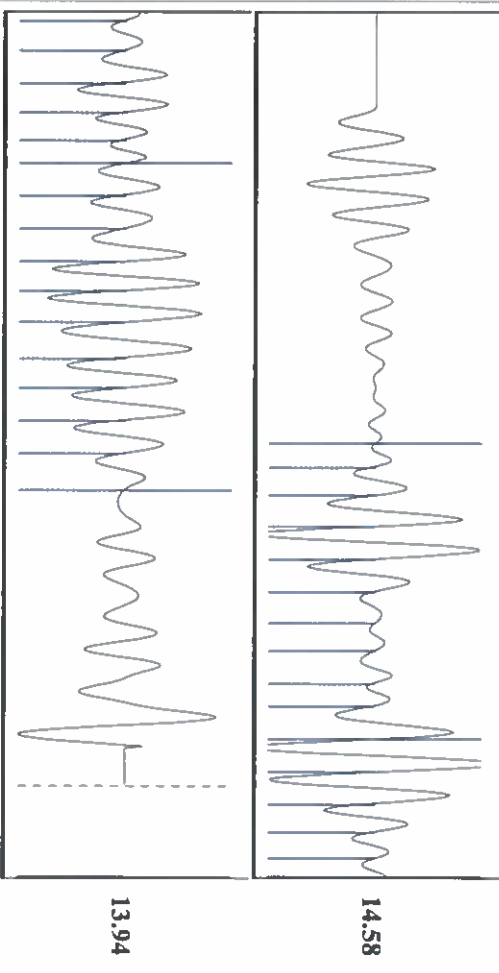


Group: TAD Well: SMU 313W (acquired on: 05/06/16 08:20:37)



Change in Pressure 0.01 psi  
 Change in Time 2.00 min  
 PT9522  
 Range 0 - ? psi

Group: TAD Well: SMU 313W (acquired on: 05/06/16 08:20:37)



Acoustic Velocity 902.277 ft/s  
 Joints Per Second 14.2315 Jts/Sec  
 Depth to liquid level 1710.27 ft  
 Automatic Collar Count Yes  
 Joints counted 30  
 Joints to liquid level 53.9516  
 Filter Width 12.1243  
 Time to 1st Collar 0.996  
 16.1243  
 3.104

Conservation Division  
District Office No. 1  
210 E. Frontview, Suite A  
Dodge City, KS 67801



Phone: 620-225-8888  
Fax: 620-225-8885  
<http://kcc.ks.gov/>

Jay Scott Emler, Chairman  
Shari Feist Albrecht, Commissioner  
Pat Apple, Commissioner

Sam Brownback, Governor

August 04, 2016

Katherine McClurkan  
Merit Energy Company, LLC  
13727 Noel Road, Suit 1200  
Dallas, TX 75240

Re: Temporary Abandonment  
API 15-055-21489-00-01  
SMU 313W  
SE/4 Sec.22-23S-34W  
Finney County, Kansas

Dear Katherine McClurkan:

Your temporary abandonment (TA) application for the well listed above has been approved. In accordance with K.A.R. 82-3-111 the TA status of this well will expire 08/02/2017.

Your exception application expires on 08/02/2019.

- \* If you return this well to service or plug it, please notify the District Office.
- \* If you sell this well you are required to file a Transfer of Operator form, T-1.
- \* If the well will remain temporarily abandoned, you must submit a new TA application, CP-111, before 08/02/2017.

You may contact me at the number above if you have questions.

Very truly yours,

Michele Pennington