



TEMPORARY ABANDONMENT WELL APPLICATION

All blanks must be complete

OPERATOR: License# _____
 Name: _____
 Address 1: _____
 Address 2: _____
 City: _____ State: _____ Zip: _____ + _____
 Contact Person: _____
 Phone: (_____) _____
 Contact Person Email: _____
 Field Contact Person: _____
 Field Contact Person Phone: (_____) _____

API No. 15- _____
 Spot Description: _____
 _____ - _____ - _____ - _____ Sec. _____ Twp. _____ S. R. _____ E W
 _____ feet from N / S Line of Section
 _____ feet from E / W Line of Section
 GPS Location: Lat: _____, Long: _____
(e.g. xx.xxxxx) (e.g. -xxx.xxxxx)
 Datum: NAD27 NAD83 WGS84
 County: _____ Elevation: _____ GL KB
 Lease Name: _____ Well #: _____
 Well Type: (check one) Oil Gas OG WSW Other: _____
 SWD Permit #: _____ ENHR Permit #: _____
 Gas Storage Permit #: _____
 Spud Date: _____ Date Shut-In: _____

	Conductor	Surface	Production	Intermediate	Liner	Tubing
Size						
Setting Depth						
Amount of Cement						
Top of Cement						
Bottom of Cement						

Casing Fluid Level from Surface: _____ How Determined? _____ Date: _____

Casing Squeeze(s): _____ to _____ w / _____ sacks of cement, _____ to _____ w / _____ sacks of cement. Date: _____
(top) (bottom) (top) (bottom)

Do you have a valid Oil & Gas Lease? Yes No

Depth and Type: Junk in Hole at _____ Tools in Hole at _____ Casing Leaks: Yes No Depth of casing leak(s): _____
(depth) (depth)

Type Completion: ALT. I ALT. II Depth of: DV Tool: _____ w / _____ sacks of cement Port Collar: _____ w / _____ sack of cement
(depth) (depth)

Packer Type: _____ Size: _____ Inch Set at: _____ Feet

Total Depth: _____ Plug Back Depth: _____ Plug Back Method: _____

Geological Data:

Formation Name	Formation Top	Formation Base	Completion Information
1. _____	At: _____	to _____ Feet	Perforation Interval _____ to _____ Feet or Open Hole Interval _____ to _____ Feet
2. _____	At: _____	to _____ Feet	Perforation Interval _____ to _____ Feet or Open Hole Interval _____ to _____ Feet

UNDER PENALTY OF PERJURY I HEREBY ATTEST THAT THE INFORMATION CONTAINED HEREIN IS TRUE AND CORRECT TO THE BEST OF MY KNOWLEDGE

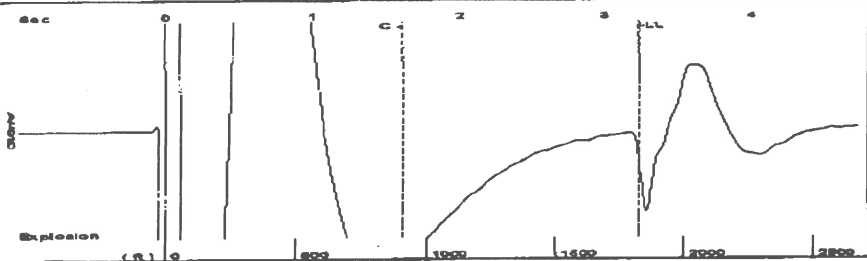
Submitted Electronically

Do NOT Write in This Space - KCC USE ONLY	Date Tested: _____	Results: _____	Date Plugged: _____	Date Repaired: _____	Date Put Back in Service: _____
	Review Completed by: _____ Comments: _____				
TA Approved: <input type="checkbox"/> Yes <input type="checkbox"/> Denied Date: _____					

Mail to the Appropriate KCC Conservation Office:

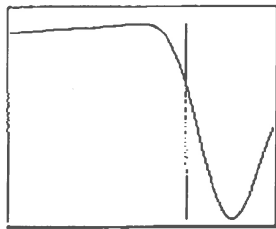
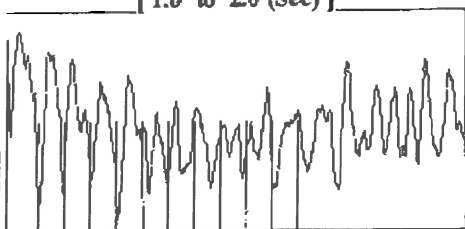
	KCC District Office #1 - 210 E. Frontview, Suite A, Dodge City, KS 67801	Phone 620.225.8888
	KCC District Office #2 / UPGS - 3450 N. Rock Road, Building 600, Suite 601, Wichita, KS 67226	Phone 316.630.4000
	KCC District Office #3 - 1500 SW Seventh Steet, Chanute, KS 66720	Phone 620.432.2300
	KCC District Office #4 - 2301 E. 13th Street, Hays, KS 67601-2651	Phone 785.625.0550

Group: Ellinwood-Roy Well: AIEKEN #3-20 (acquired on: 08/02/16 12:59:58)



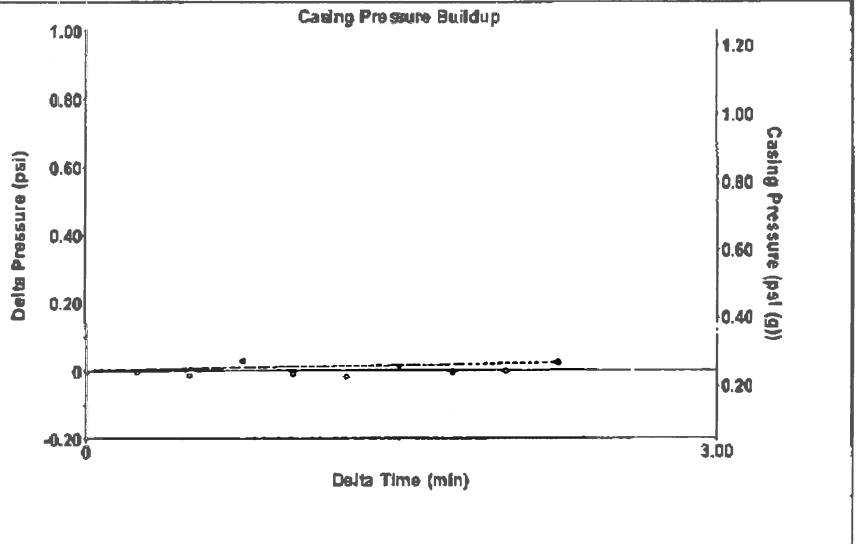
Filter Type High Pass Automatic Collar Count Yes Time 3.233 sec
Manual Acoustic Velocity 116.2 ft/s Manual JTS/sec 17.6056 Joints 57.5608 Jts
Depth 1824.68 ft

[1.0 to 2.0 (Sec)]



Analysis Method: Automatic

Group: Ellinwood-Roy Well: AIEKEN #3-20 (acquired on: 08/02/16 12:59:58)



Change in Pressure 0.02 psi PT13440
Change in Time 2.25 min Range 0 - 9 psi

Group: Ellinwood-Roy Well: AIEKEN #3-20 (acquired on: 08/02/16 12:59:58)

Production Current Potential Casing Pressure 0.2 psi (g)
Oil -.- BBL/D Casing Pressure Buildup 0.023 psi
Water -.- BBL/D 2.25 min
Gas -.- Mscf/D Gas/Liquid Interface Pressure 1.1 psi (g)
IPR Method Vogel
PBHP/SBHP -.-
Production Efficiency 0.0
Liquid Level Depth 1824.68 ft
Oil 40 deg API
Water 1.05 Sp.Gr.H2O
Gas 0.85 Sp.Gr.AIR
Pump Intake Depth 3400.00 ft
Acoustic Velocity 1128.78 ft/s Formation Depth 3400.00 ft



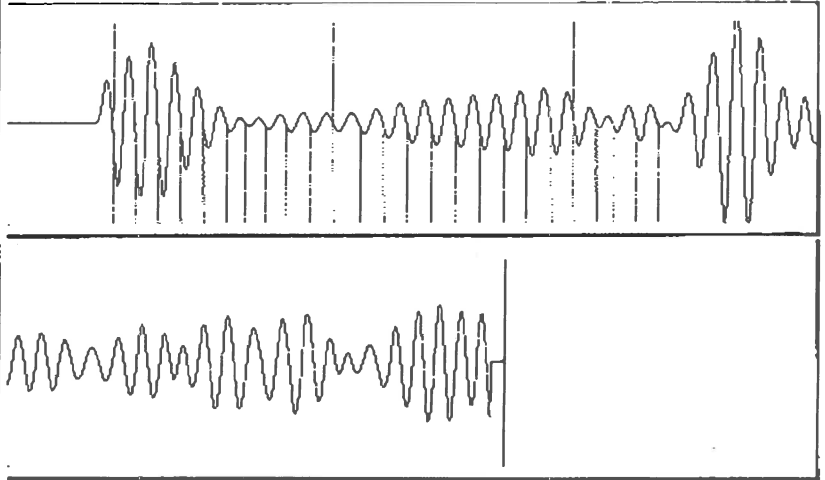
Producing
Annular Gas Flow 0 Mscf/D
% Liquid 100 %

Pump Intake 531.0 psi (g)
Producing BHP 531.0 psi (g)
Static BHP -.- psi (g)

Formation Submergence
Total Gaseous Liquid Column HT (TVD) 1575 ft
Equivalent Gas Free Liquid HT (TVD) 1575 ft

Acoustic Test

Group: Ellinwood-Roy Well: AIEKEN #3-20 (acquired on: 08/02/16 12:59:58)



Acoustic Velocity 1128.78 ft/s Joints counted 24
Joints Per Second 17.8042 jts/sec Joints to liquid level 57.5608
Depth to liquid level 1824.68 ft Filter Width 15.6056 19.6056
Automatic Collar Count Yes Time to 1st Collar 0.26 1.608

Conservation Division
District Office No. 1
210 E. Frontview, Suite A
Dodge City, KS 67801



Phone: 620-225-8888
Fax: 620-225-8885
<http://kcc.ks.gov/>

Jay Scott Emler, Chairman
Shari Feist Albrecht, Commissioner
Pat Apple, Commissioner

Sam Brownback, Governor

August 16, 2016

Loveness Mpanje
F. G. Holl Company L.L.C.
9431 E CENTRAL STE 100
WICHITA, KS 67206-2563

Re: Temporary Abandonment
API 15-185-21002-00-00
AIKEN 3
NW/4 Sec.20-22S-11W
Stafford County, Kansas

Dear Loveness Mpanje:

"Your temporary abandonment (TA) application for the well listed above has been approved. In accordance with K.A.R. 82-3-111 the TA status of this well will expire 08/16/2017.

- * If you return this well to service or plug it, please notify the District Office.
- * If you sell this well you are required to file a Transfer of Operator form, T-1.
- * If the well will remain temporarily abandoned, you must submit a new TA application, CP-111, before 08/16/2017.

You may contact me at the number above if you have questions.

Very truly yours,

Michael Maier"