



# TEMPORARY ABANDONMENT WELL APPLICATION

OPERATOR: License# \_\_\_\_\_  
 Name: \_\_\_\_\_  
 Address 1: \_\_\_\_\_  
 Address 2: \_\_\_\_\_  
 City: \_\_\_\_\_ State: \_\_\_\_\_ Zip: \_\_\_\_\_ + \_\_\_\_\_  
 Contact Person: \_\_\_\_\_  
 Phone: ( \_\_\_\_\_ ) \_\_\_\_\_  
 Contact Person Email: \_\_\_\_\_  
 Field Contact Person: \_\_\_\_\_  
 Field Contact Person Phone: ( \_\_\_\_\_ ) \_\_\_\_\_

API No. 15- \_\_\_\_\_  
 Spot Description: \_\_\_\_\_  
 \_\_\_\_\_ - \_\_\_\_\_ - \_\_\_\_\_ - \_\_\_\_\_ Sec. \_\_\_\_\_ Twp. \_\_\_\_\_ S. R. \_\_\_\_\_  E  W  
 \_\_\_\_\_ feet from  N /  S Line of Section  
 \_\_\_\_\_ feet from  E /  W Line of Section  
 GPS Location: Lat: \_\_\_\_\_, Long: \_\_\_\_\_  
(e.g. xx.xxxxx) (e.g. -xxx.xxxxx)  
 Datum:  NAD27  NAD83  WGS84  
 County: \_\_\_\_\_ Elevation: \_\_\_\_\_  GL  KB  
 Lease Name: \_\_\_\_\_ Well #: \_\_\_\_\_  
 Well Type: (check one)  Oil  Gas  OG  WSW  Other: \_\_\_\_\_  
 SWD Permit #: \_\_\_\_\_  ENHR Permit #: \_\_\_\_\_  
 Gas Storage Permit #: \_\_\_\_\_  
 Spud Date: \_\_\_\_\_ Date Shut-In: \_\_\_\_\_

	Conductor	Surface	Production	Intermediate	Liner	Tubing
Size						
Setting Depth						
Amount of Cement						
Top of Cement						
Bottom of Cement						

Casing Fluid Level from Surface: \_\_\_\_\_ How Determined? \_\_\_\_\_ Date: \_\_\_\_\_

Casing Squeeze(s): \_\_\_\_\_ to \_\_\_\_\_ w / \_\_\_\_\_ sacks of cement, \_\_\_\_\_ to \_\_\_\_\_ w / \_\_\_\_\_ sacks of cement. Date: \_\_\_\_\_  
(top) (bottom) (top) (bottom)

Do you have a valid Oil & Gas Lease?  Yes  No

Depth and Type:  Junk in Hole at \_\_\_\_\_  Tools in Hole at \_\_\_\_\_ Casing Leaks:  Yes  No Depth of casing leak(s): \_\_\_\_\_  
(depth) (depth)

Type Completion:  ALT. I  ALT. II Depth of:  DV Tool: \_\_\_\_\_ w / \_\_\_\_\_ sacks of cement  Port Collar: \_\_\_\_\_ w / \_\_\_\_\_ sack of cement  
(depth) (depth)

Packer Type: \_\_\_\_\_ Size: \_\_\_\_\_ Inch Set at: \_\_\_\_\_ Feet

Total Depth: \_\_\_\_\_ Plug Back Depth: \_\_\_\_\_ Plug Back Method: \_\_\_\_\_

**Geological Data:**

Formation Name	Formation Top	Formation Base	Completion Information
1. _____	At: _____	to _____ Feet	Perforation Interval _____ to _____ Feet or Open Hole Interval _____ to _____ Feet
2. _____	At: _____	to _____ Feet	Perforation Interval _____ to _____ Feet or Open Hole Interval _____ to _____ Feet

UNDER PENALTY OF PERJURY I HEREBY ATTEST THAT THE INFORMATION CONTAINED HEREIN IS TRUE AND CORRECT TO THE BEST OF MY KNOWLEDGE

Submitted Electronically

<b>Do NOT Write in This Space - KCC USE ONLY</b>	Date Tested: _____	Results: _____	Date Plugged: _____	Date Repaired: _____	Date Put Back in Service: _____
	Review Completed by: _____ Comments: _____				
TA Approved: <input type="checkbox"/> Yes <input type="checkbox"/> Denied Date: _____					

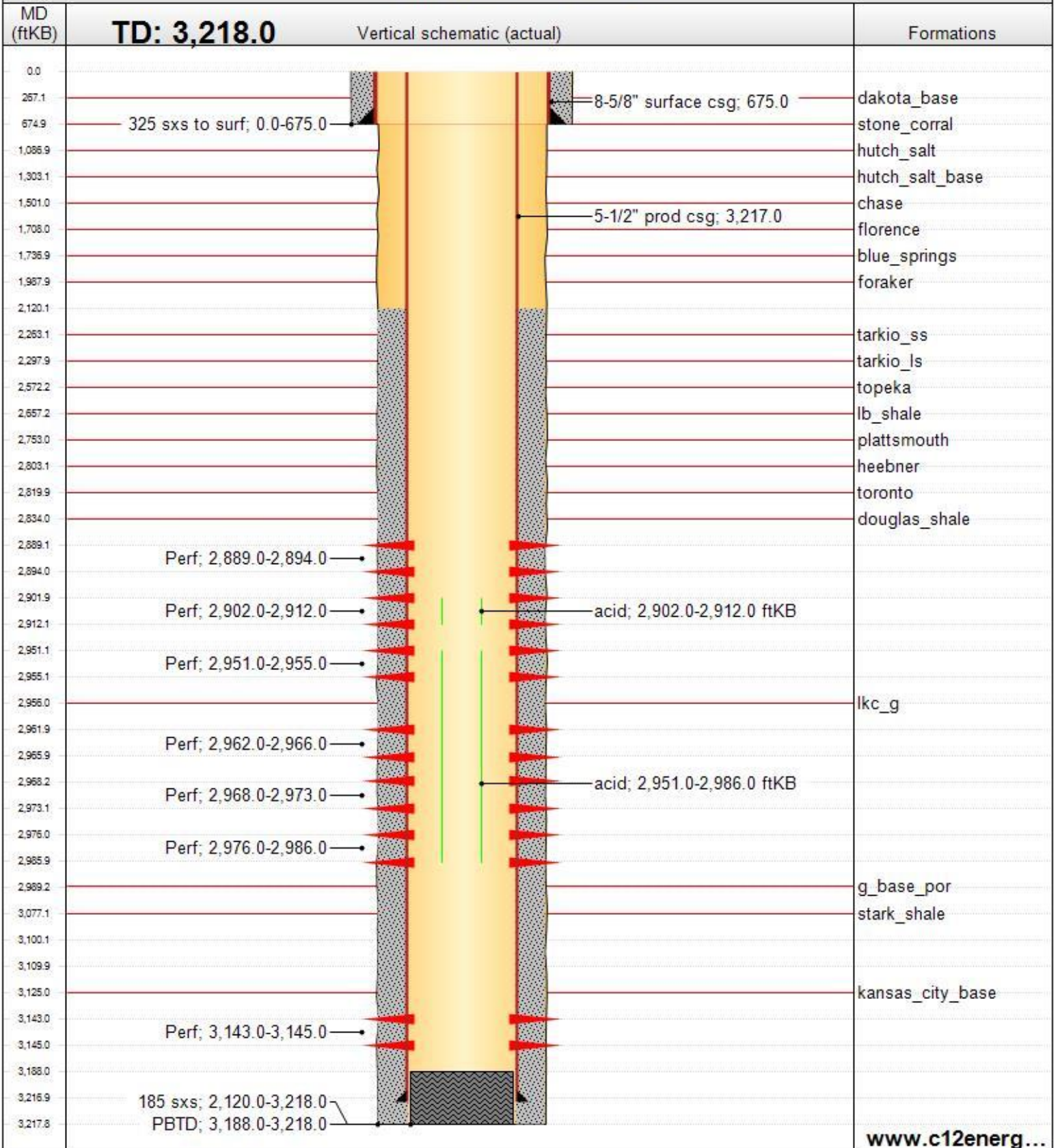
**Mail to the Appropriate KCC Conservation Office:**

	KCC District Office #1 - 210 E. Frontview, Suite A, Dodge City, KS 67801	Phone 620.225.8888
	KCC District Office #2 / UPGS - 3450 N. Rock Road, Building 600, Suite 601, Wichita, KS 67226	Phone 316.630.4000
	KCC District Office #3 - 1500 SW Seventh Steet, Chanute, KS 66720	Phone 620.432.2300
	KCC District Office #4 - 2301 E. 13th Street, Hays, KS 67601-2651	Phone 785.625.0550

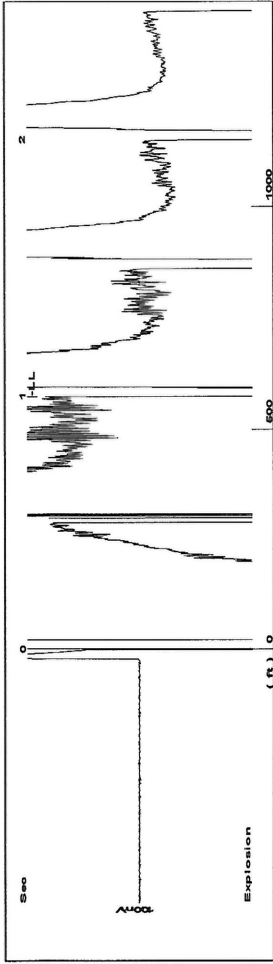
API/UWI 15-167-22438	User Text 1 Continental Operating Co.	Operator C12: Kansas Oil, LLC	Well Status TA	Orig KB El... 1,742.00
Rig Release Date 9/2/1984	Abandon Date 1/1/1900	Latitude (°) 38° 47' 44.217" N	Longitude (°) 98° 48' 9.257" W	Surface Legal Location 14S 13W Sec 31 SW NE NE

Comment

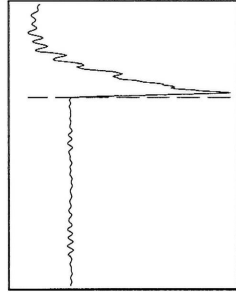
Original Hole, 8/17/2016 8:13:05 AM



Group: G Miller Well: G Miller # 27 (acquired on: 08/16/16 12:57:52 )



Time 0.998 sec  
 Joints 18.1025 Jts  
 Depth 573.85 ft



Liquid level calculated with  
 user supplied Acoustic Velocity

Acoustic Velocity 1150 ft/s

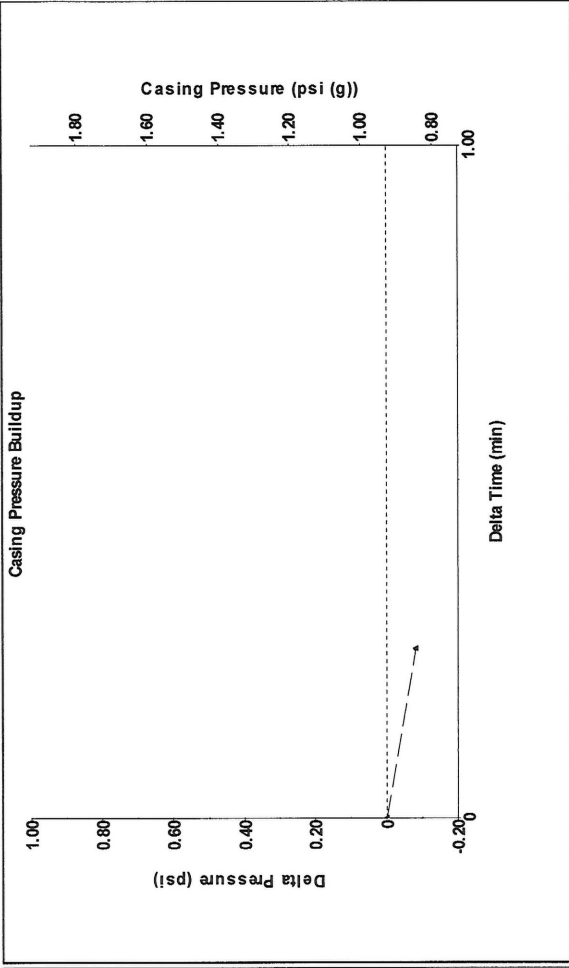
**Analysis Method: Acoustic Velocity**

Group: G Miller Well: G Miller # 27 (acquired on: 08/16/16 12:57:52 )

Production	Potential	Casing Pressure	Static
Current	- * - BBL/D	0.9 psi (g)	Oil Column Height
Oil	- * - BBL/D	Casing Pressure Buildup	MD 0 ft
Water	- * - Mscf/D	-0.1 psi	Water Column Height
Gas	- * - Mscf/D	0.25 min	MD - * - ft
IPR Method	Vogel	Gas/Liquid Interface Pressure	Static BHP
PBHP/SBHP	- * -	- * - psi (g)	- * - psi (g)
Production Efficiency	0.0	Liquid Level Depth	
Oil	40 deg.API	573.85 ft	
Water	1.05 Sp.Gr.H2O	Pump Intake Depth	
Gas	0.85 Sp.Gr.AIR	- * - ft	
Acoustic Velocity	1150 ft/s	Formation Depth	
		3145.00 ft	

Acoustic Test

Group: G Miller Well: G Miller # 27 (acquired on: 08/16/16 12:57:52 )



Change in Pressure -0.08 psi PT 15086  
 Change in Time 0.25 min Range

Group: G Miller Well: G Miller # 27 (acquired on: 08/16/16 12:57:52 )

**Entered Acoustic Velocity for Liquid Level depth determination**

Conservation Division  
District Office No. 4  
2301 E. 13th Street  
Hays, KS 67601-2651



Phone: 785-625-0550  
Fax: 785-625-0564  
<http://kcc.ks.gov/>

Jay Scott Emler, Chairman  
Shari Feist Albrecht, Commissioner  
Pat Apple, Commissioner

Sam Brownback, Governor

August 17, 2016

Parker Stevens  
C12 Kansas Oil, LLC  
1900 WAZEE ST.  
SUITE 200  
DENVER, CO 80202

Re: Temporary Abandonment  
API 15-167-22438-00-01  
G MILLER 27-31  
NE/4 Sec.31-14S-13W  
Russell County, Kansas

Dear Parker Stevens:

"Your temporary abandonment (TA) application for the well listed above has been approved. In accordance with K.A.R. 82-3-111 the TA status of this well will expire 08/17/2017.

- \* If you return this well to service or plug it, please notify the District Office.
- \* If you sell this well you are required to file a Transfer of Operator form, T-1.
- \* If the well will remain temporarily abandoned, you must submit a new TA application, CP-111, before 08/17/2017.

You may contact me at the number above if you have questions.

Very truly yours,

RICHARD WILLIAMS"