



TEMPORARY ABANDONMENT WELL APPLICATION

OPERATOR: License# _____
 Name: _____
 Address 1: _____
 Address 2: _____
 City: _____ State: _____ Zip: _____ + _____
 Contact Person: _____
 Phone: (_____) _____
 Contact Person Email: _____
 Field Contact Person: _____
 Field Contact Person Phone: (_____) _____

API No. 15- _____
 Spot Description: _____
 _____ - _____ - _____ - _____ Sec. _____ Twp. _____ S. R. _____ E W
 _____ feet from N / S Line of Section
 _____ feet from E / W Line of Section
 GPS Location: Lat: _____, Long: _____
(e.g. xx.xxxxx) (e.g. -xxx.xxxxx)
 Datum: NAD27 NAD83 WGS84
 County: _____ Elevation: _____ GL KB
 Lease Name: _____ Well #: _____
 Well Type: (check one) Oil Gas OG WSW Other: _____
 SWD Permit #: _____ ENHR Permit #: _____
 Gas Storage Permit #: _____
 Spud Date: _____ Date Shut-In: _____

| | Conductor | Surface | Production | Intermediate | Liner | Tubing |
|------------------|-----------|---------|------------|--------------|-------|--------|
| Size | | | | | | |
| Setting Depth | | | | | | |
| Amount of Cement | | | | | | |
| Top of Cement | | | | | | |
| Bottom of Cement | | | | | | |

Casing Fluid Level from Surface: _____ How Determined? _____ Date: _____

Casing Squeeze(s): _____ to _____ w / _____ sacks of cement, _____ to _____ w / _____ sacks of cement. Date: _____
(top) (bottom) (top) (bottom)

Do you have a valid Oil & Gas Lease? Yes No

Depth and Type: Junk in Hole at _____ Tools in Hole at _____ Casing Leaks: Yes No Depth of casing leak(s): _____
(depth) (depth)

Type Completion: ALT. I ALT. II Depth of: DV Tool: _____ w / _____ sacks of cement Port Collar: _____ w / _____ sack of cement
(depth) (depth)

Packer Type: _____ Size: _____ Inch Set at: _____ Feet

Total Depth: _____ Plug Back Depth: _____ Plug Back Method: _____

Geological Data:

| Formation Name | Formation Top | Formation Base | Completion Information |
|----------------|---------------|----------------|--|
| 1. _____ | At: _____ | to _____ Feet | Perforation Interval _____ to _____ Feet or Open Hole Interval _____ to _____ Feet |
| 2. _____ | At: _____ | to _____ Feet | Perforation Interval _____ to _____ Feet or Open Hole Interval _____ to _____ Feet |

~~UNDER PENALTY OF PERJURY I HEREBY ATTEST THAT THE INFORMATION CONTAINED HEREIN IS TRUE AND CORRECT TO THE BEST OF MY KNOWLEDGE~~

Submitted Electronically

| | | | | | |
|---|--|----------------|---------------------|----------------------|---------------------------------|
| Do NOT Write in This Space - KCC USE ONLY | Date Tested: _____ | Results: _____ | Date Plugged: _____ | Date Repaired: _____ | Date Put Back in Service: _____ |
| | Review Completed by: _____ Comments: _____ | | | | |
| TA Approved: <input type="checkbox"/> Yes <input type="checkbox"/> Denied Date: _____ | | | | | |

Mail to the Appropriate KCC Conservation Office:

| | | |
|--|---|--------------------|
| | KCC District Office #1 - 210 E. Frontview, Suite A, Dodge City, KS 67801 | Phone 620.225.8888 |
| | KCC District Office #2 / UPGS - 3450 N. Rock Road, Building 600, Suite 601, Wichita, KS 67226 | Phone 316.630.4000 |
| | KCC District Office #3 - 1500 SW Seventh Steet, Chanute, KS 66720 | Phone 620.432.2300 |
| | KCC District Office #4 - 2301 E. 13th Street, Hays, KS 67601-2651 | Phone 785.625.0550 |

General

Well ID 125961
 Well Jack 1-35
 Company Sandridge
 Operator - * -
 Lease Name Jack 1-35
 Elevation 0.00 ft
 Production Method Rod Pump
 Dataset Description 2nd shot

Comment

Surface Unit

Manufacturer - * -
 Unit Class Conventional
 Unit API Number - * -
 Measured Stroke Length 100.000 in
 Rotation CW
 Counter Balance Effect (Weights Level) - * - Klb
 Weight Of Counter Weights 2000 lb

Prime Mover

Motor Type Electric
 Rated HP - * - HP
 Run Time 24 hr/day
 MFG/Comment - * -

Electric Motor Parameters

Rated Full Load AMPS - * -
 Rated Full Load RPM - * -
 Synchronous RPM 1200
 Voltage - * -
 Hertz 60
 Phase 3
 Power Consumption 5
 Power Demand 8 \$/KW

Tubulars

Tubing OD - * - in
 Casing OD - * - in
 Average Joint Length 31.700 ft
 Anchor Depth - * - ft
 Kelly Bushing 0.00 ft

Pump

Plunger Diameter - * - in
 Pump Intake Depth - * - ft
 **Total Rod Length > Pump Depth

Polished Rod

Polished Rod Diameter - * - in

Rod String

| | Top Taper | Taper 2 | Taper 3 | Taper 4 | Taper 5 | Taper 6 | |
|--------------|-----------|---------|---------|---------|---------|---------|-------|
| Rod Type | - * - | - * - | - * - | - * - | - * - | - * - | - * - |
| Rod Length | - * - | - * - | - * - | - * - | - * - | - * - | ft |
| Rod Diameter | - * - | - * - | - * - | - * - | - * - | - * - | in |
| Rod Weight | 0.0 | 0.0 | 0.0 | 0.0 | 0.0 | 0.0 | lb |

Total Rod Length 0
 Total Rod Weight 0.00

Damp Up 0.05
 Damp Down 0.05

Conditions

Pressure

Static BHP - * - psi (g)
 Static BHP Method Acoustic
 Static BHP Date 08/16/2016

Producing BHP - * - psi (g)
 Producing BHP Method Acoustic
 Producing BHP Date 08/16/2016
 Formation Depth 4328.00 ft

Surface Producing Pressures

Tubing Pressure - * - psi (g)
 Casing Pressure 202.1 psi (g)

Casing Pressure Buildup

Change in Pressure 0.018 psi
 Over Change in Time 1.75 min

Production

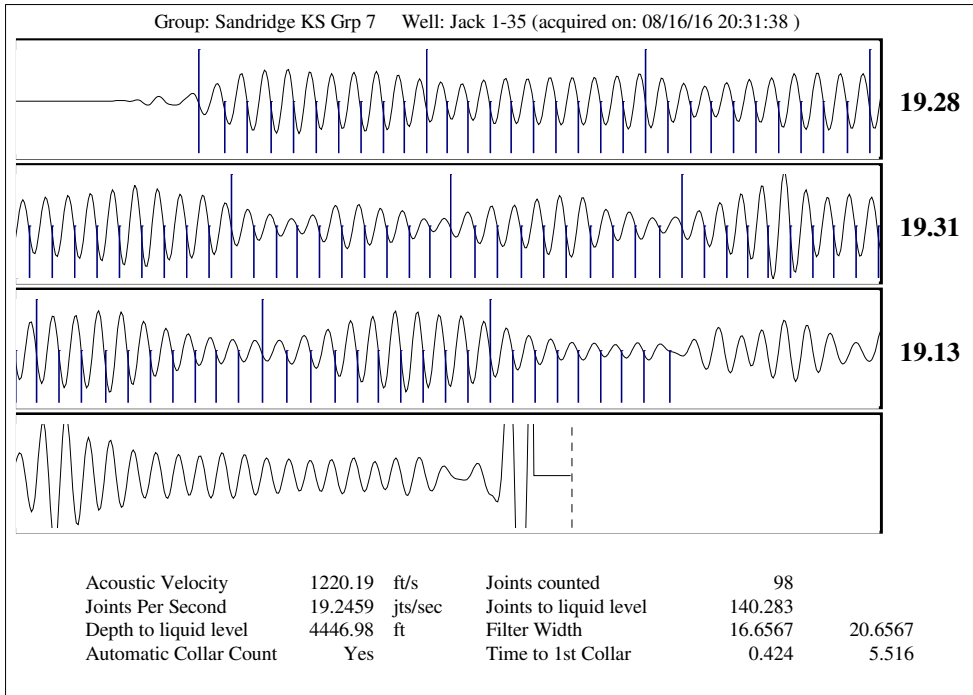
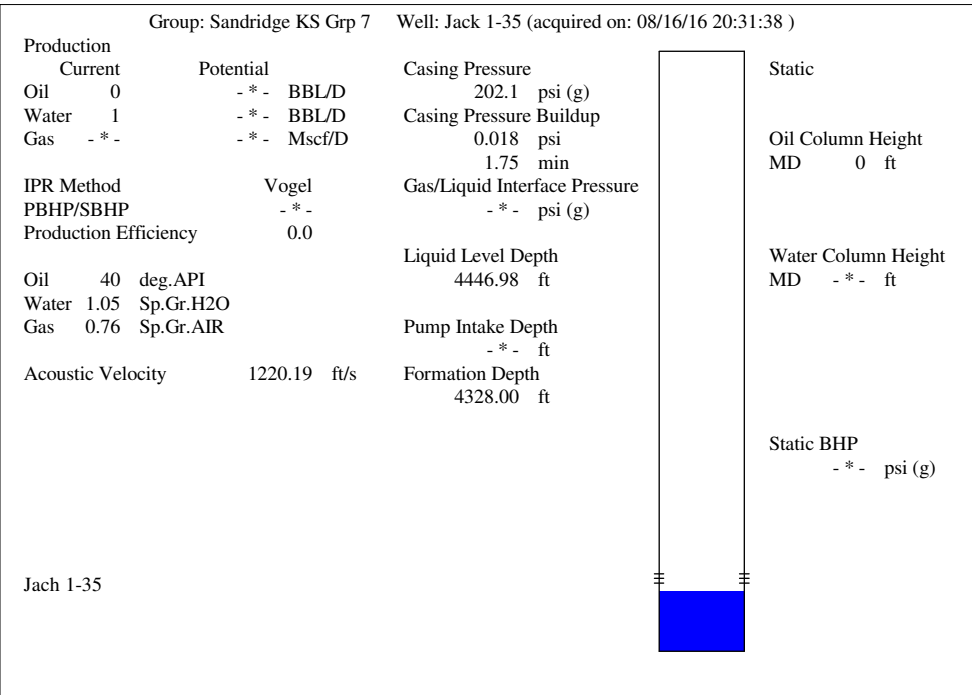
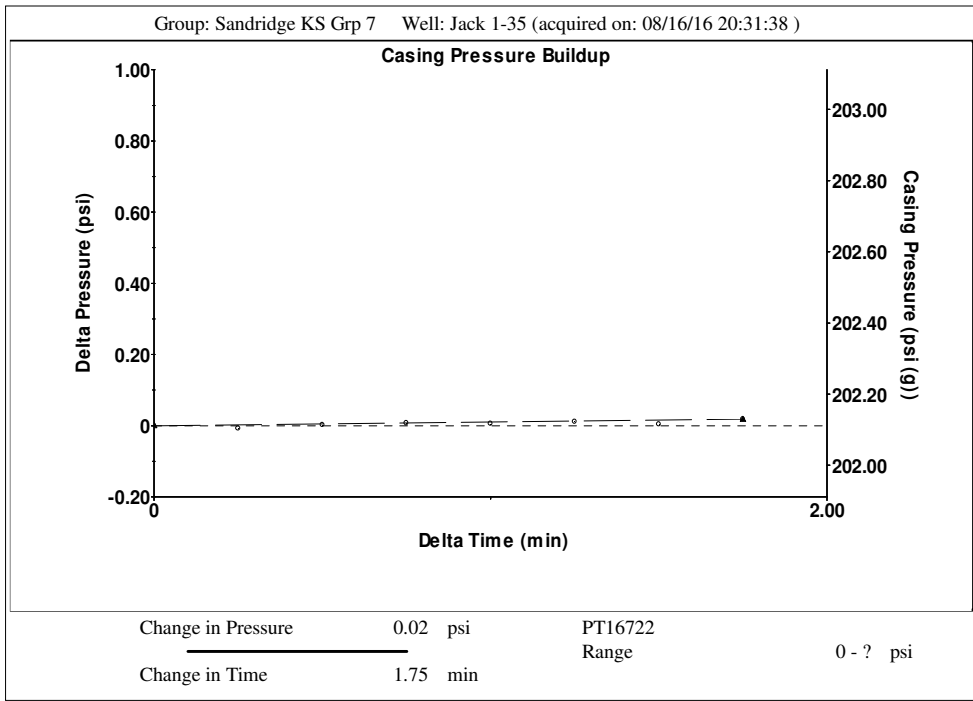
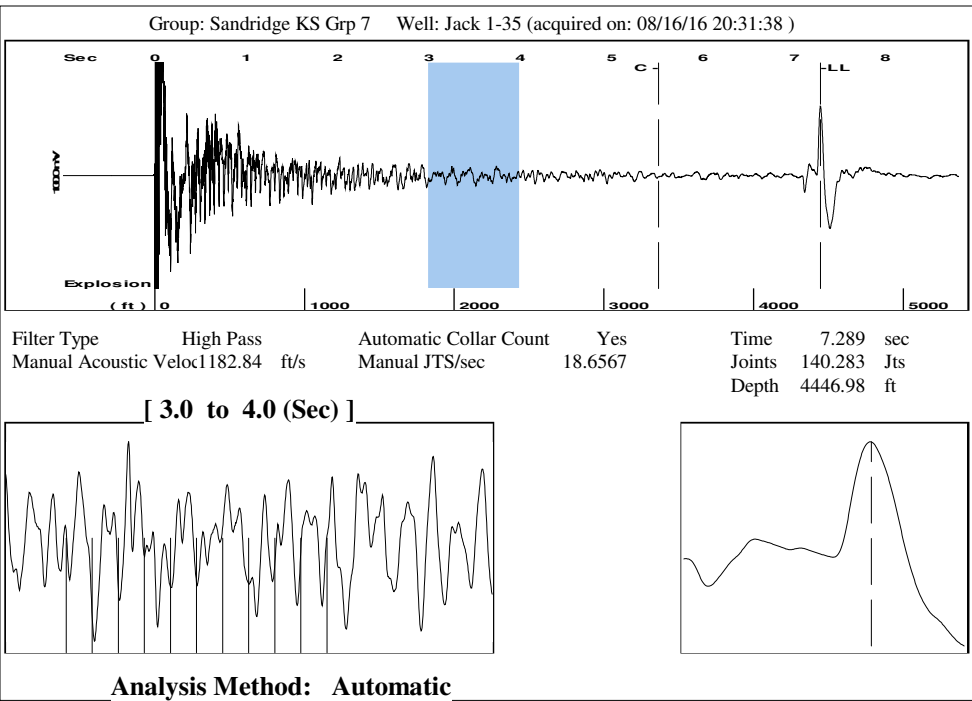
Oil Production 0 BBL/D
 Water Production 1 BBL/D
 Gas Production - * - Mscf/D
 Production Date 08/12/2016

Temperatures

Surface Temperature 70 deg F
 Bottomhole Temperature 150 deg F

Fluid Properties

Oil API 40 deg.API
 Water Specific Gravity 1.05 Sp.Gr.H2O



Conservation Division
District Office No. 2
3450 N. Rock Road
Building 600, Suite 601
Wichita, KS 67226



Phone: 316-630-4000
Fax: 316-630-4005
<http://kcc.ks.gov/>

Jay Scott Emler, Chairman
Shari Feist Albrecht, Commissioner
Pat Apple, Commissioner

Sam Brownback, Governor

September 20, 2016

Wanda Ledbetter
SandRidge Exploration and Production LLC
123 ROBERT S. KERR AVE
OKLAHOMA CITY, OK 73102-6406

Re: Temporary Abandonment
API 15-077-21639-00-00
JACK 1-35
NW/4 Sec.35-33S-06W
Harper County, Kansas

Dear Wanda Ledbetter:

"Your temporary abandonment (TA) application for the well listed above has been approved. In accordance with K.A.R. 82-3-111 the TA status of this well will expire 09/20/2017.

- * If you return this well to service or plug it, please notify the District Office.
- * If you sell this well you are required to file a Transfer of Operator form, T-1.
- * If the well will remain temporarily abandoned, you must submit a new TA application, CP-111, before 09/20/2017.

You may contact me at the number above if you have questions.

Very truly yours,

Steve VanGieson"