



TEMPORARY ABANDONMENT WELL APPLICATION

All blanks must be complete

OPERATOR: License# _____
 Name: _____
 Address 1: _____
 Address 2: _____
 City: _____ State: _____ Zip: _____ + _____
 Contact Person: _____
 Phone: (_____) _____
 Contact Person Email: _____
 Field Contact Person: _____
 Field Contact Person Phone: (_____) _____

API No. 15- _____
 Spot Description: _____
 _____ - _____ - _____ - _____ Sec. _____ Twp. _____ S. R. _____ E W
 _____ feet from N / S Line of Section
 _____ feet from E / W Line of Section
 GPS Location: Lat: _____, Long: _____
(e.g. xx.xxxxx) (e.g. -xxx.xxxxx)
 Datum: NAD27 NAD83 WGS84
 County: _____ Elevation: _____ GL KB
 Lease Name: _____ Well #: _____
 Well Type: (check one) Oil Gas OG WSW Other: _____
 SWD Permit #: _____ ENHR Permit #: _____
 Gas Storage Permit #: _____
 Spud Date: _____ Date Shut-In: _____

	Conductor	Surface	Production	Intermediate	Liner	Tubing
Size						
Setting Depth						
Amount of Cement						
Top of Cement						
Bottom of Cement						

Casing Fluid Level from Surface: _____ How Determined? _____ Date: _____
 Casing Squeeze(s): _____ to _____ w / _____ sacks of cement, _____ to _____ w / _____ sacks of cement. Date: _____
(top) (bottom) (top) (bottom)
 Do you have a valid Oil & Gas Lease? Yes No
 Depth and Type: Junk in Hole at _____ Tools in Hole at _____ Casing Leaks: Yes No Depth of casing leak(s): _____
(depth) (depth)
 Type Completion: ALT. I ALT. II Depth of: DV Tool: _____ w / _____ sacks of cement Port Collar: _____ w / _____ sack of cement
(depth) (depth)
 Packer Type: _____ Size: _____ Inch Set at: _____ Feet
 Total Depth: _____ Plug Back Depth: _____ Plug Back Method: _____

Geological Data:

Formation Name	Formation Top	Formation Base	Completion Information
1. _____	At: _____	to _____ Feet	Perforation Interval _____ to _____ Feet or Open Hole Interval _____ to _____ Feet
2. _____	At: _____	to _____ Feet	Perforation Interval _____ to _____ Feet or Open Hole Interval _____ to _____ Feet

UNDER PENALTY OF PERJURY I HEREBY ATTEST THAT THE INFORMATION CONTAINED HEREIN IS TRUE AND CORRECT TO THE BEST OF MY KNOWLEDGE

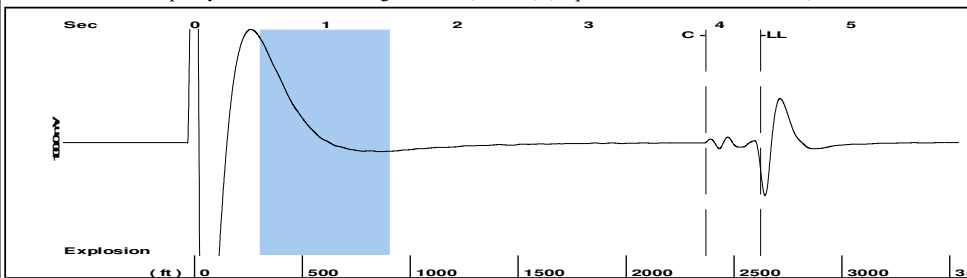
Submitted Electronically

Do NOT Write in This Space - KCC USE ONLY	Date Tested: _____	Results: _____	Date Plugged: _____	Date Repaired: _____	Date Put Back in Service: _____
	Review Completed by: _____ Comments: _____				
TA Approved: <input type="checkbox"/> Yes <input type="checkbox"/> Denied Date: _____					

Mail to the Appropriate KCC Conservation Office:

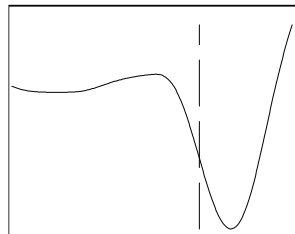
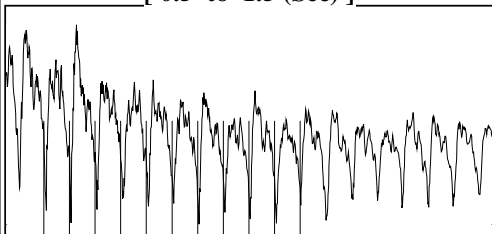
	KCC District Office #1 - 210 E. Frontview, Suite A, Dodge City, KS 67801	Phone 620.225.8888
	KCC District Office #2 / UPGS - 3450 N. Rock Road, Building 600, Suite 601, Wichita, KS 67226	Phone 316.630.4000
	KCC District Office #3 - 1500 SW Seventh Steet, Chanute, KS 66720	Phone 620.432.2300
	KCC District Office #4 - 2301 E. 13th Street, Hays, KS 67601-2651	Phone 785.625.0550

Group: MyWells Well: Youngren 2-15 (Pioneer) (acquired on: 08/23/16 10:08:17)



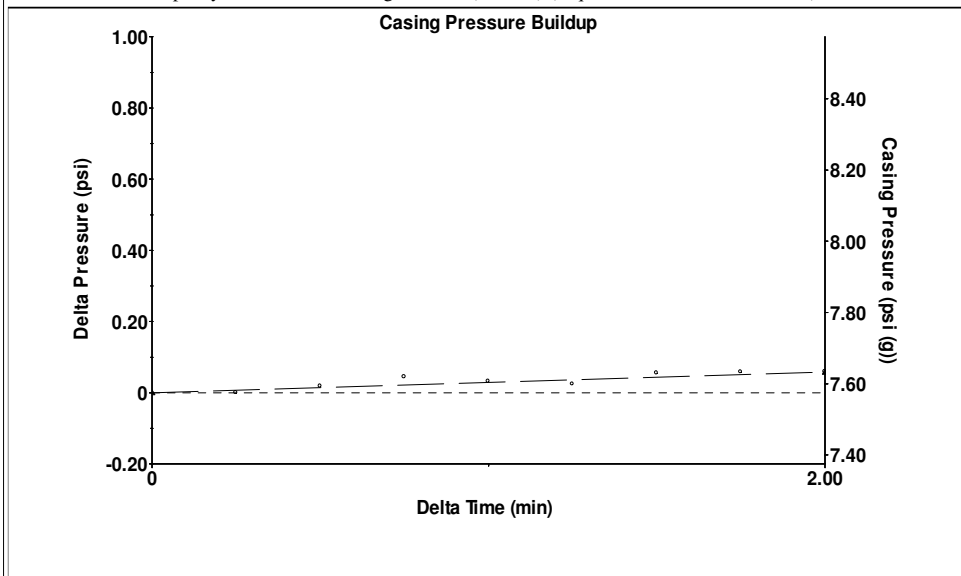
Filter Type High Pass Automatic Collar Count Yes Time 4.312 sec
 Manual Acoustic Veloc 1203.04 ft/s Manual JTS/sec 18.9753 Joints 82.7412 Jts
 Depth 2622.90 ft

[0.5 to 1.5 (Sec)]



Analysis Method: Automatic

Group: MyWells Well: Youngren 2-15 (Pioneer) (acquired on: 08/23/16 10:08:17)

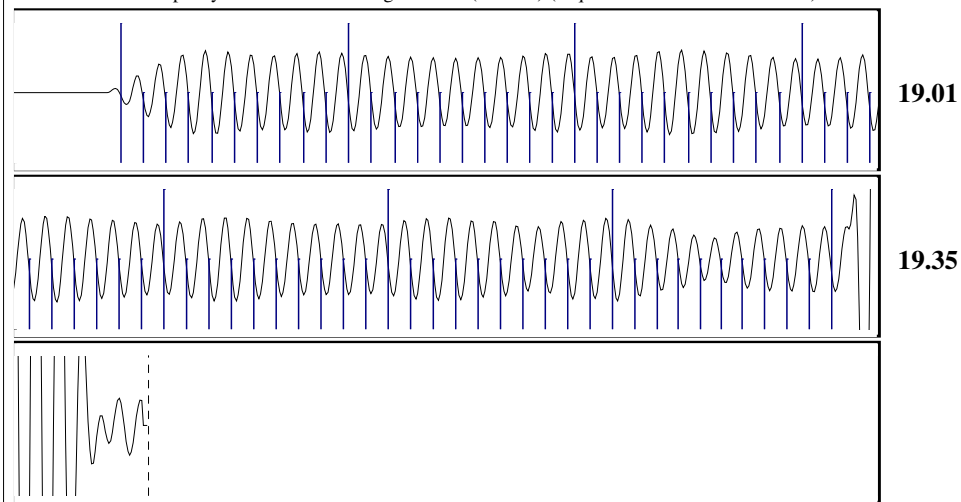


Change in Pressure 0.06 psi PT8525
 Change in Time 2.00 min Range 0 - ? psi

Group: MyWells Well: Youngren 2-15 (Pioneer) (acquired on: 08/23/16 10:08:17)

Production		Potential		Casing Pressure		Producing	
Oil	- * -	- * -	BBL/D	7.6	psi (g)	Annular	
Water	- * -	- * -	BBL/D	Casing Pressure Buildup		Gas Flow	- * - Mscf/D
Gas	- * -	- * -	Mscf/D	0.058	psi	% Liquid	98 %
IPR Method	Vogel			2.00	min		
PBHP/SBHP	- * -			Gas/Liquid Interface Pressure	9.0	psi (g)	
Production Efficiency	0.0			Liquid Level Depth	2622.90	ft	
Oil	40	deg.API		Tubing Intake Depth	- * -	ft	
Water	1.05	Sp.Gr.H2O		Formation Depth	2723.00	ft	
Gas	0.73	Sp.Gr.AIR					
Acoustic Velocity	1216.56	ft/s					
Formation Submergence							
Total Gaseous Liquid Column HT (TVD)	100	ft					
Equivalent Gas Free Liquid HT (TVD)	98	ft					
Acoustic Test							

Group: MyWells Well: Youngren 2-15 (Pioneer) (acquired on: 08/23/16 10:08:17)



Acoustic Velocity 1216.56 ft/s Joints counted 70
 Joints Per Second 19.1886 jts/sec Joints to liquid level 82.7412
 Depth to liquid level 2622.9 ft Filter Width 16.9753 20.9753
 Automatic Collar Count Yes Time to 1st Collar 0.248 3.896

Production	Current	Potential
Oil	- * -	- * - BBL/D
Water	- * -	- * - BBL/D
Gas	- * -	- * - Mscf/D

Based on SBHP psi (g)

IPR Method Vogel

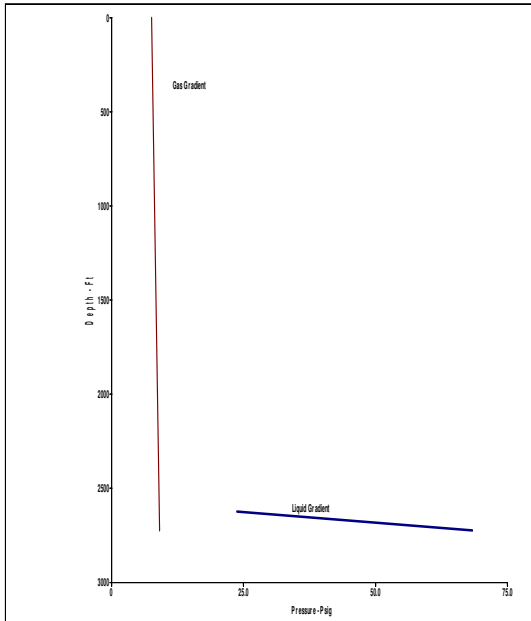
Calculation for Continous Removal of Liquids Method:

Turner Critical Velocity for Gas Wells

For Tubing ID: 2.441 in
 For Water: Mscf/D
 For Condensate: Mscf/D

Back Pressure on Formation Due To Liquid Loading: 59.0738 Mscf/D

Tubing ID in	Gas Rate Mscf/D	Predicted Status
2.441		
1.995		
1.500		
1.250		
1.000		



Conservation Division
District Office No. 1
210 E. Frontview, Suite A
Dodge City, KS 67801



Phone: 620-225-8888
Fax: 620-225-8885
<http://kcc.ks.gov/>

Jay Scott Emler, Chairman
Shari Feist Albrecht, Commissioner
Pat Apple, Commissioner

Sam Brownback, Governor

August 30, 2016

Shawn Hildreth
Linn Operating, Inc.
600 TRAVIS STE 5100
HOUSTON, TX 77002-3018

Re: Temporary Abandonment
API 15-189-20086-00-00
YOUNGREN 2-15
SE/4 Sec.15-32S-39W
Stevens County, Kansas

Dear Shawn Hildreth:

"Your temporary abandonment (TA) application for the well listed above has been approved. In accordance with K.A.R. 82-3-111 the TA status of this well will expire 08/30/2017.

- * If you return this well to service or plug it, please notify the District Office.
- * If you sell this well you are required to file a Transfer of Operator form, T-1.
- * If the well will remain temporarily abandoned, you must submit a new TA application, CP-111, before 08/30/2017.

You may contact me at the number above if you have questions.

Very truly yours,

Michael Maier"