



Fall & Associates
 Stake and Elevation Service
 P.O. Box 222
 Pretty Prairie, KS. 67570
 785-243-7506

Date 6-22-16

Invoice Number 0614161

MURFIN DRILLING

1-1

Hatch 'A'

Operator

Number

Farm Name

Cheyenne-KS

1

2s

37w

2130'FSL 330'FEL

County-State

S

T

R

Location

Murfin Drilling
 250 N. Water
 Suite 300
 Wichita, KS. 67202

Elevation 3374 Gr.

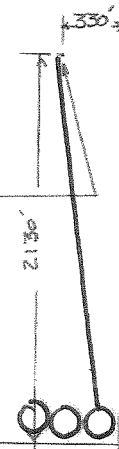
Ordered By: Shauna

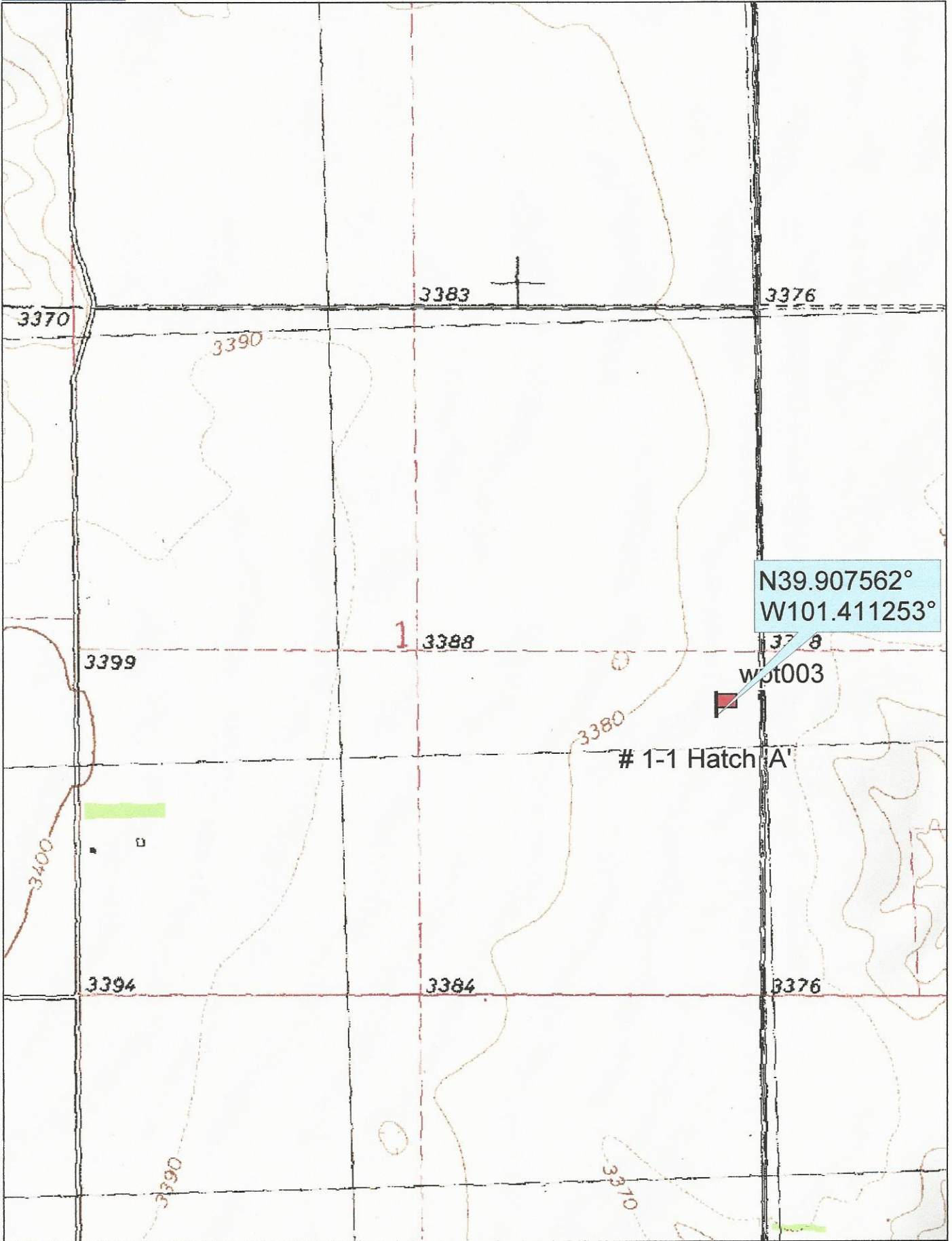
Scale 1"=1000'



Set 6' wood stake in slight slope
 wheat.

Stake





N39.907562°
W101.411253°

wpt003

1-1 Hatch A