

Geological Report

Andrews #22-1
950' FNL & 2050' FWL
Sec. 22 T22s R13w
Stafford County, Kansas



StrataKan Exploration, Inc.

General Data

Well Data: StrataKan Exploration, Inc.
Andrews #22-1
950' FNL & 2050' FWL
Sec. 22 T22s R13w
Stafford County, Kansas
API # 15-185-23960-0000

Drilling Contractor: WW Drilling Rig #4

Geologist: Jason T Alm

Spud Date: May 13, 2016

Completion Date: May 21, 2016

Elevation: 1890' Ground Level
1895' Kelly Bushing

Directions: St. John KS, North on Hwy 281 9 mi. East ½ mi.
South into location.

Casing: 681' 8 5/8" surface casing
3907' 5 1/2" production casing

Samples: 10' wet and dry, 2900' to RTD

Drilling Time: 2850' to RTD

Electric Logs: Pioneer Energy Services "Dan Schmidt"
CNL/CDL, DIL, MEL

Drillstem Tests: Five, Trilobite Testing "Gary Pevoteaux

Problems: None

Remarks: After DST #4 background gas was too high to see
any formation gas from the Arbuckle.

Formation Tops

Formation	StrataKan Exploration
	Andrews #22-1
	Sec. 22 T22s R13w
	950' FNL & 2050' FWL
Anhydrite	751', +1144
Base	774', +1121
Topeka	2950', -1055
Heebner	3254', -1359
Toronto	3272', -1377
Douglas	3286', -1391
Brown Lime	3382', -1487
Lansing	3403', -1508
BKC	3628', -1733
Viola	3704', -1793
Simpson	3748', -1853
Arbuckle	3804', -1909
LTD	3908', -2013
RTD	3910', -2015

Sample Zone Descriptions

- LKC “D-zone” (3440’, -1545): Covered in DST #1**
 Ls – Fine to sub-crystalline with poor scattered inter-crystalline porosity, light to fair spotted oil stain in porosity, slight show of free oil when broken, very light odor, dull yellow fluorescents, 18 units hotwire.
- LKC “F-zone” (3469’, -1574): Covered in DST #1**
 Ls – Fine crystalline, oolitic with poor to fair oomoldic and oolitic porosity, light to fair spotted oil stain in porosity, very slight show of free oil, dull yellow fluorescents, chalky, 22 units hotwire.
- LKC “I-zone” (3542’, -1647): Covered in DST #2**
 Ls – Fine crystalline, oolitic with poor oolitic porosity, light oil stain with scattered light saturation, fair show of free oil when broken, very light odor, fair yellow fluorescents, good cut, 130 units hotwire.

- LKC “J-zone”** (3558’, -1663): **Covered in DST #2**
 Ls – Fine crystalline, oolitic with fair oomoldic and oolitic porosity with scattered poor inter-crystalline porosity, light to fair oil stain in porosity, slight show of free oil, light to fair odor, fair yellow fluorescents, good cut, 55 units hotwire.
- LKC “K-zone”** (3588’, -1693): **Covered in DST #2**
 Ls – Fine crystalline, oolitic packstone with fair oomoldic and oolitic porosity, light to fair oil stain and saturation in porosity, fair show of free oil when broken, fair odor, fair yellow fluorescents, good cut, 75 units hotwire.
- Viola** (3613’, -1761): **Covered in DST #3**
 Chert – Mostly fresh, few weathered pieces with fair vuggy porosity, few scattered pieces of weathered dolomite with good vuggy porosity, light to heavy oil stain some oil looks very tarry, fair show of free oil on cup, light odor, dull to fair yellow fluorescents, fair to good cut, few visible gas bubbles, 63-117 units hotwire.
- Simpson Sand** (3770’, -1875): **Covered in DST #4**
 Ss – Quartz, clear to slightly frosted, fine to scattered medium grained, fair to well sorted, sub-rounded, fair cementation with poor to fair inter-granular porosity in cluster, light to good oil stain with light saturation, fair show of free oil, light gassy odor, many gas bubbles on break, bright yellow fluorescents, excellent cut, 85 units hotwire.
- Arbuckle** (3804’, -1909): **Covered in DST #5**
 Dolo – Fine to medium rhombic crystalline with fair oomoldic and inter-crystalline porosity, light to good oil stain and saturation, good show of free oil, good odor, poor to fair yellow fluorescents, good cut.

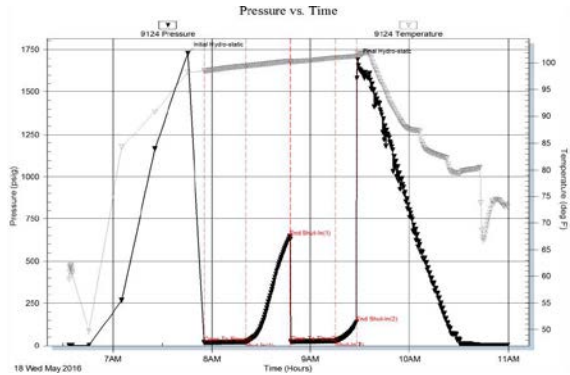
Drill Stem Tests
 Trilobite Testing, Inc.
 "Gary Pevoteaux"

DST #1 LKC B thru F zones

Interval (3430' – 3485') Anchor Length 55'

IHP	- 1728 #	
IFP	- 30" – Built to ½ in.	19-23 #
ISI	- 30" – Dead	647 #
FFP	- 25" – V.W.S.B.	24-28 #
FSI	- 10" – Dead	140 #
FHP	- 1690 #	
BHT	- 101°F	

Recovery: 10' Mud

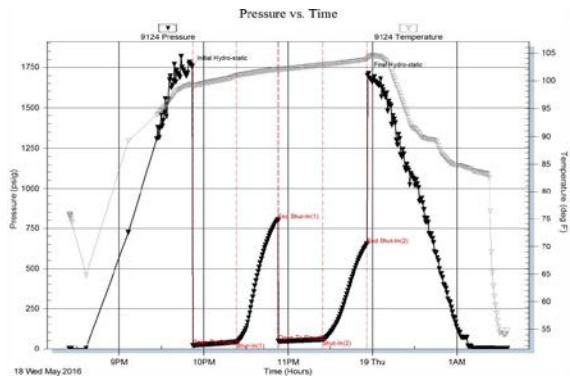


DST #2 LKC I thru K zones

Interval (3541' – 3605') Anchor Length 64'

IHP	- 1756 #	
IFP	- 30" – Built to 1 in.	20-41 #
ISI	- 30" – Dead	805 #
FFP	- 30" – Built to ¾ in.	47-57 #
FSI	- 30" – Dead	653 #
FHP	- 1711 #	
BHT	- 104°F	

Recovery: 65' Heavy Mud

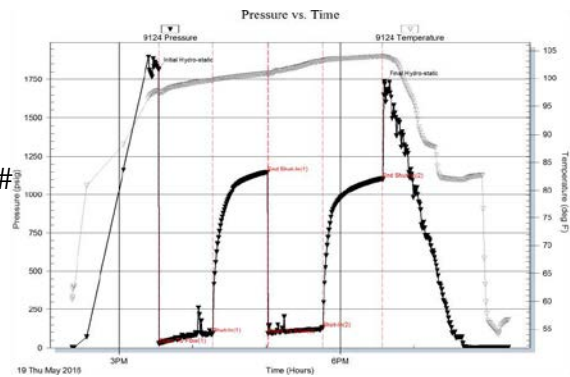


DST #3 Viola

Interval (3627' – 3740') Anchor Length 113'

IHP	- 1820 #	
IFP	- 45" – Built to 6 in.	26-94 #
ISI	- 45" – Dead	1148 #
FFP	- 45" – Built to 4 in.	90-131 #
FSI	- 45" – Dead	1105 #
FHP	- 1734 #	
BHT	- 104°F	

Recovery: 100' WM 26% Water
 100' WM 15% Water

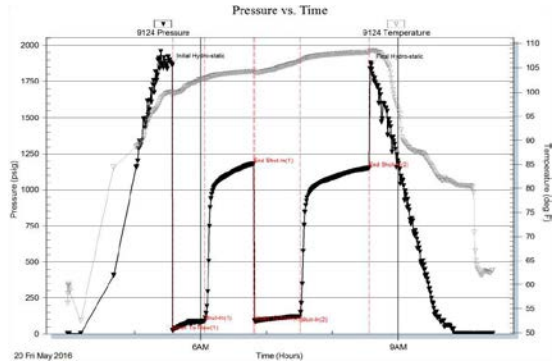


DST #4 Simpson Sand

Interval (3738' – 3790') Anchor Length 52'

- IHP – 1867 #
- IFP – 30" – B.O.B. 28 min. 22-90 #
- ISI – 45" – Built to ½ in. 1183 #
- FFP – 45" – B.O.B. 16 min. 88-122 #
- FSI – 60" – Built to 3 in. 1153 #
- FHP – 1864 #
- BHT – 108°F

Recovery: 450' GIP
 145' GMCO 55% Oil
 120' GOCM 24% Oil

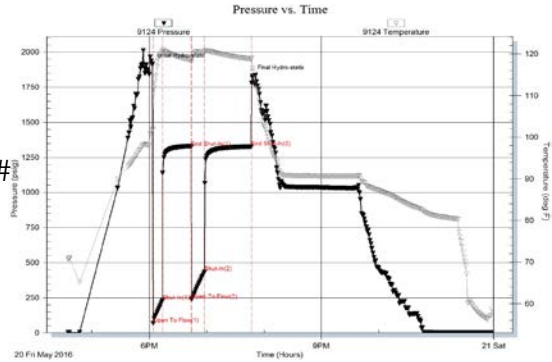


DST #5 Arbuckle

Interval (3809' – 3817') Anchor Length 8'

- IHP – 1916 #
- IFP – 10" – B.O.B. 3 min. 67-229 #
- ISI – 30" – Built to ½ in. 1325 #
- FFP – 15" – B.O.B. 16 min. 236-435 #
- FSI – 45" – Built to 3 in. 1327 #
- FHP – 1830 #
- BHT – 120cF

Recovery: 90' GIP
 100' GCO 21.6° API
 380' GWCO 55% Oil, 25% Water
 125' OCW 20% Oil, 80% Water
 365' Water



Structural Comparison

Formation	StrataKan Exploration Andrews #22-1 Sec. 22 T22s R13w 950' FNL & 2050' FWL	L.K. Parrish Williams #1 Sec. 22 T22s R13w NE SE NW	Lesden Oil & Gas Mater #1 Sec. 22 T22s R13w 100' SW of NE NW NE
Anhydrite	751', +1144	NA	NA
Base	774', +1121	NA	NA
Topeka	2950', -1055	NA	NA
Heebner	3254', -1359	3262', -1364	3255', -1347
Toronto	3272', -1377	NA	NA
Douglas	3286', -1391	NA	NA
Brown Lime	3382', -1487	NA	NA
Lansing	3403', -1508	3412', -1517	3406', -1500
BKC	3628', -1733	3638', -1738	3630', -1723
Viola	3704', -1793	3696', -1798	3702', -1795
Simpson	3748', -1853	3754', -1856	3746', -1839
Arbuckle	3804', -1909	3812', -1914	3806', -1900

Summary

The location for the Andrews #22-1 was found via 3-D seismic survey. The new well ran structurally as expected via the survey. Five Drill Stem Tests were conducted, two of which recovered commercial amounts of oil from the Simpson and Arbuckle Formations. After all gathered data had been examined the decision was made to run 5 ½ inch production casing to further evaluate the Andrews #22-1 well.

Recommended Perforations

Primary:

Arbuckle 2nd Break	3826' – 3829'	Not Tested
Arbuckle	3804' – 3807'	DST #5

Secondary:

Simpson Sand	3771' – 3776'	DST #4
---------------------	----------------------	---------------

Before Abandonment:

LKC K	3589' – 3594'	DST #2
LKC J	3560' – 3564'	DST #2
	3566' – 3570'	
LKC I	3544' – 3550'	DST #2

Respectfully Submitted,

Jason T Alm
Hard Rock Consulting, Inc.