



DRILL STEM TEST REPORT

Prepared For: **Stelbar Oil Corporation Incorporated**

1625 N Waterfront Parkway
Suite 200
Wichita KS 67206+6602

ATTN: Dave Goldak

Eikelberger #1-21

21-17s-32w Scott,KS

Start Date: 2016.07.23 @ 03:32:00

End Date: 2016.07.23 @ 11:40:30

Job Ticket #: 65100 DST #: 1

Trilobite Testing, Inc
PO Box 362 Hays, KS 67601
ph: 785-625-4778 fax: 785-625-5620

Printed: 2016.07.27 @ 15:10:36



TRILOBITE TESTING, INC

DRILL STEM TEST REPORT

Stelbar Oil Corporation Incorporated

21-17s-32w Scott,KS

1625 N Waterfront Parkwy
Suite 200
Wichita KS 67206+6602
ATTN: Dave Goldak

Eikelberger #1-21

Job Ticket: 65100

DST#: 1

Test Start: 2016.07.23 @ 03:32:00

GENERAL INFORMATION:

Formation: **LKC B**

Deviated: No Whipstock: ft (KB)

Time Tool Opened: 05:36:30

Time Test Ended: 11:40:30

Test Type: Conventional Bottom Hole (Initial)

Tester: Ken Swinney

Unit No: 72

Interval: 3999.00 ft (KB) To 4028.00 ft (KB) (TVD)

Reference Elevations: 2999.00 ft (KB)

Total Depth: 4028.00 ft (KB) (TVD)

2994.00 ft (CF)

Hole Diameter: 7.88 inches Hole Condition: Fair

KB to GR/CF: 5.00 ft

Serial #: 6999

Inside

Press@RunDepth: 541.70 psig @ 4024.00 ft (KB)

Capacity: 8000.00 psig

Start Date: 2016.07.23

End Date:

2016.07.23

Last Calib.:

2016.07.23

Start Time:

03:32:05

End Time:

11:40:29

Time On Btm:

2016.07.23 @ 05:35:30

Time Off Btm:

2016.07.23 @ 09:38:00

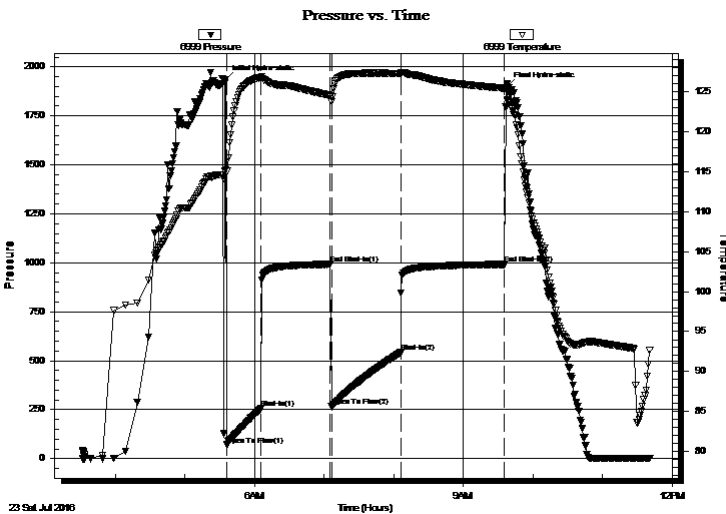
TEST COMMENT: IFP 30 Minutes Initial attempt to set tool had partial packer failure BOB in 9 minutes

ISI 60 Minutes No blow back

FFP 60 Minutes BOB in 11 minutes

FSI 90 Minutes No blow back

PRESSURE SUMMARY



Time (Min.)	Pressure (psig)	Temp (deg F)	Annotation
0	1933.98	115.20	Initial Hydro-static
1	70.95	115.04	Open To Flow (1)
30	255.46	126.78	Shut-In(1)
90	992.98	124.52	End Shut-In(1)
91	265.45	123.79	Open To Flow (2)
151	541.70	127.28	Shut-In(2)
240	991.79	125.41	End Shut-In(2)
243	1898.36	123.85	Final Hydro-static

Recovery

Length (ft)	Description	Volume (bbl)
1147.00	MW w / show of oil Mud 5% Water 95%	15.00

Gas Rates

Choke (inches)	Pressure (psig)	Gas Rate (Mcf/d)



TRILOBITE TESTING, INC

DRILL STEM TEST REPORT

Stelbar Oil Corporation Incorporated

21-17s-32w Scott,KS

1625 N Waterfront Parkw ay
Suite 200
Wichita KS 67206+6602
ATTN: Dave Goldak

Eikelberger #1-21

Job Ticket: 65100

DST#: 1

Test Start: 2016.07.23 @ 03:32:00

GENERAL INFORMATION:

Formation: **LKC B**

Deviated: No Whipstock: ft (KB)

Time Tool Opened: 05:36:30

Time Test Ended: 11:40:30

Test Type: Conventional Bottom Hole (Initial)

Tester: Ken Swinney

Unit No: 72

Interval: 3999.00 ft (KB) To 4028.00 ft (KB) (TVD)

Reference Elevations: 2999.00 ft (KB)

Total Depth: 4028.00 ft (KB) (TVD)

2994.00 ft (CF)

Hole Diameter: 7.88 inches Hole Condition: Fair

KB to GR/CF: 5.00 ft

Serial #: 8960 Outside

Press@RunDepth: 990.71 psig @ 4025.00 ft (KB)

Capacity: 8000.00 psig

Start Date: 2016.07.23

End Date:

2016.07.23

Last Calib.:

2016.07.23

Start Time: 03:32:05

End Time:

11:39:59

Time On Btm:

2016.07.23 @ 05:32:30

Time Off Btm:

2016.07.23 @ 09:37:30

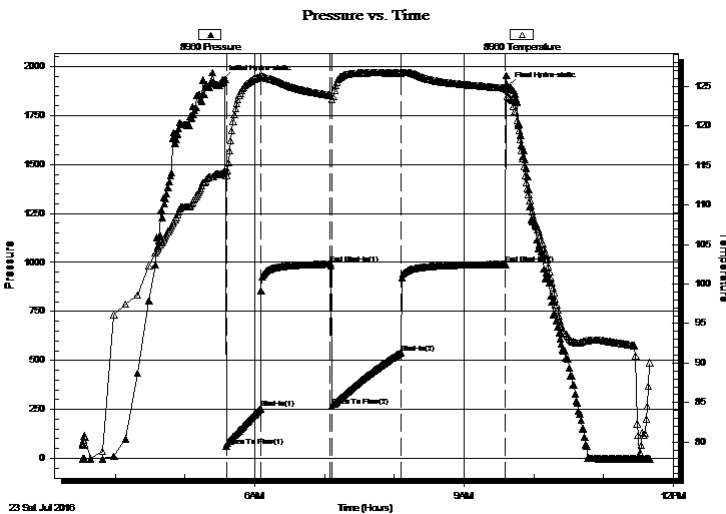
TEST COMMENT: IFP 30 Minutes Initial attempt to set tool had partial packer failure BOB in 9 minutes

ISI 60 Minutes No blow back

FFP 60 Minutes BOB in 11 minutes

FSI 90 Minutes No blow back

PRESSURE SUMMARY



Time (Min.)	Pressure (psig)	Temp (deg F)	Annotation
0	1935.30	113.95	Initial Hydro-static
3	60.78	113.76	Open To Flow (1)
33	253.80	126.12	Shut-In(1)
93	992.03	123.86	End Shut-In(1)
94	267.82	123.33	Open To Flow (2)
153	540.03	126.64	Shut-In(2)
243	990.71	124.75	End Shut-In(2)
245	1896.24	123.75	Final Hydro-static

Recovery

Length (ft)	Description	Volume (bbl)
1147.00	MW w / show of oil Mud 5% Water 95%	15.00

Gas Rates

Choke (inches)	Pressure (psig)	Gas Rate (Mcf/d)



**TRILOBITE
TESTING, INC**

DRILL STEM TEST REPORT

TOOL DIAGRAM

Stelbar Oil Corporation Incorporated

21-17s-32w Scott,KS

1625 N Waterfront Parkway
Suite 200
Wichita KS 67206+6602
ATTN: Dave Goldak

Eikelberger #1-21

Job Ticket: 65100

DST#: 1

Test Start: 2016.07.23 @ 03:32:00

Tool Information

Drill Pipe:	Length: 3853.00 ft	Diameter: 3.80 inches	Volume: 54.05 bbl	Tool Weight: 2000.00 lb
Heavy Wt. Pipe:	Length: 0.00 ft	Diameter: 0.00 inches	Volume: 0.00 bbl	Weight set on Packer: 20000.00 lb
Drill Collar:	Length: 120.00 ft	Diameter: 2.25 inches	Volume: 0.59 bbl	Weight to Pull Loose: 78000.00 lb
			<u>Total Volume: 54.64 bbl</u>	Tool Chased 0.00 ft
Drill Pipe Above KB:	4.00 ft			String Weight: Initial 56000.00 lb
Depth to Top Packer:	3999.00 ft			Final 59000.00 lb
Depth to Bottom Packer:	ft			
Interval between Packers:	29.00 ft			
Tool Length:	59.00 ft			
Number of Packers:	2	Diameter: 6.75 inches		

Tool Comments:

Tool Description

Tool Description	Length (ft)	Serial No.	Position	Depth (ft)	Accum. Lengths
Shut-In Tool	5.00			3974.00	
Sampler	3.00			3977.00	
Hydraulic tool	5.00			3982.00	
Jars	5.00			3987.00	
Safety Joint	2.00			3989.00	
Top Packer	5.00			3994.00	
Packer	5.00			3999.00	30.00 Bottom Of Top Packer
Anchor	24.00			4023.00	
Recorder	1.00	6999	Inside	4024.00	
Recorder	1.00	8960	Outside	4025.00	
Bullnose	3.00			4028.00	29.00 Anchor Tool

Total Tool Length: 59.00



**TRILOBITE
TESTING, INC**

DRILL STEM TEST REPORT

FLUID SUMMARY

Stelbar Oil Corporation Incorporated

21-17s-32w Scott,KS

1625 N Waterfront Parkway
Suite 200
Wichita KS 67206+6602
ATTN: Dave Goldak

Eikelberger #1-21

Job Ticket: 65100

DST#: 1

Test Start: 2016.07.23 @ 03:32:00

Mud and Cushion Information

Mud Type: Gel Chem

Mud Weight: 9.00 lb/gal

Viscosity: 68.00 sec/qt

Water Loss: 7.16 in³

Resistivity: ohm.m

Salinity: 3000.00 ppm

Filter Cake: 1.00 inches

Cushion Type:

Cushion Length: ft

Cushion Volume: bbl

Gas Cushion Type:

Gas Cushion Pressure: psig

Oil API: deg API

Water Salinity: 25000 ppm

Recovery Information

Recovery Table

Length ft	Description	Volume bbl
1147.00	MW w/ show of oil Mud 5% Water 95%	14.996

Total Length: 1147.00 ft Total Volume: 14.996 bbl

Num Fluid Samples: 0

Num Gas Bombs: 0

Serial #:

Laboratory Name:

Laboratory Location:

Recovery Comments: Fluid sampler recovery

2400 water ml

100 mud ml

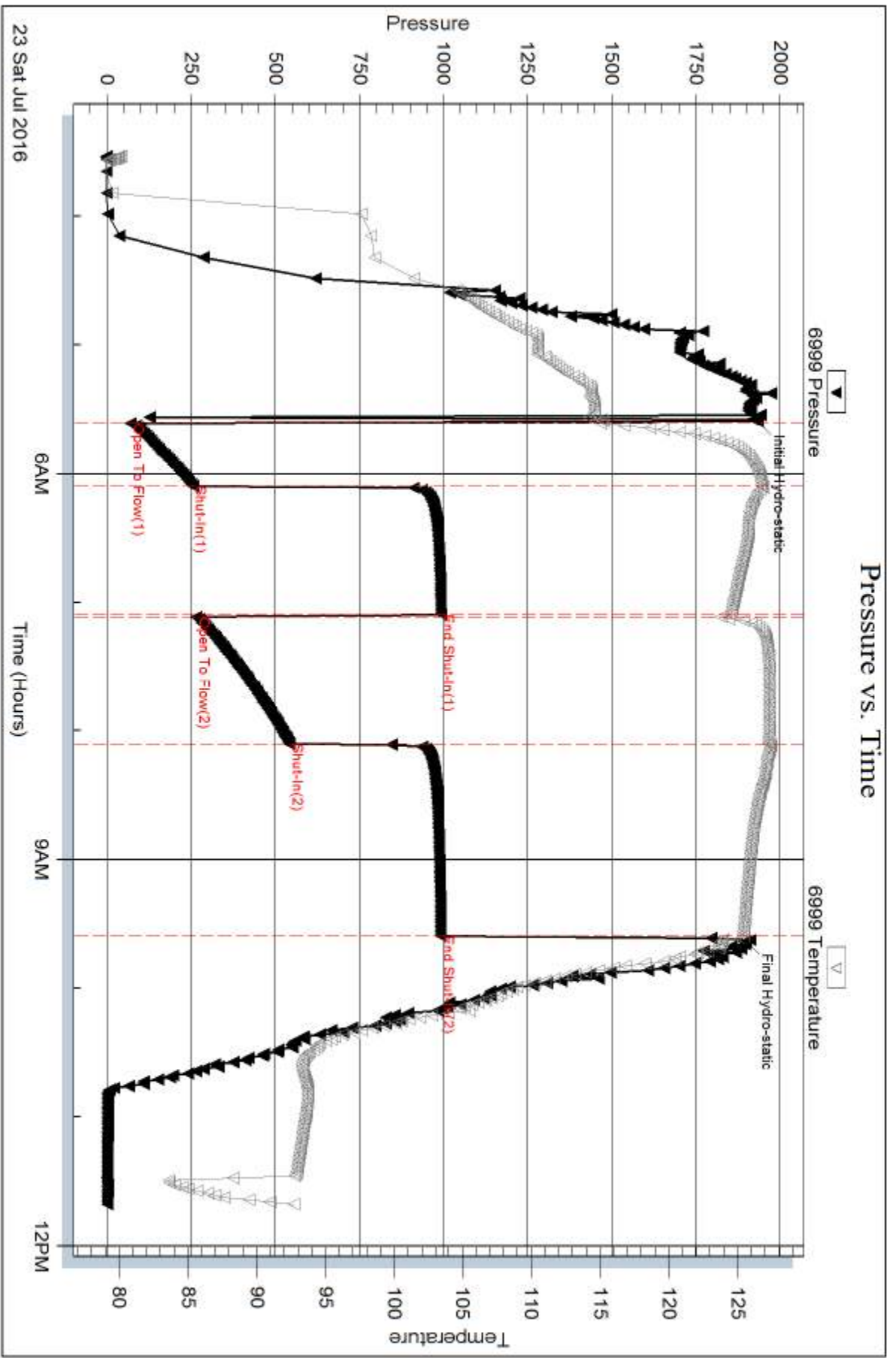
Serial #: 6999

Inside

Stelbar Oil Corporation Incorporated

Eikelberger #1-21

DST Test Number: 1

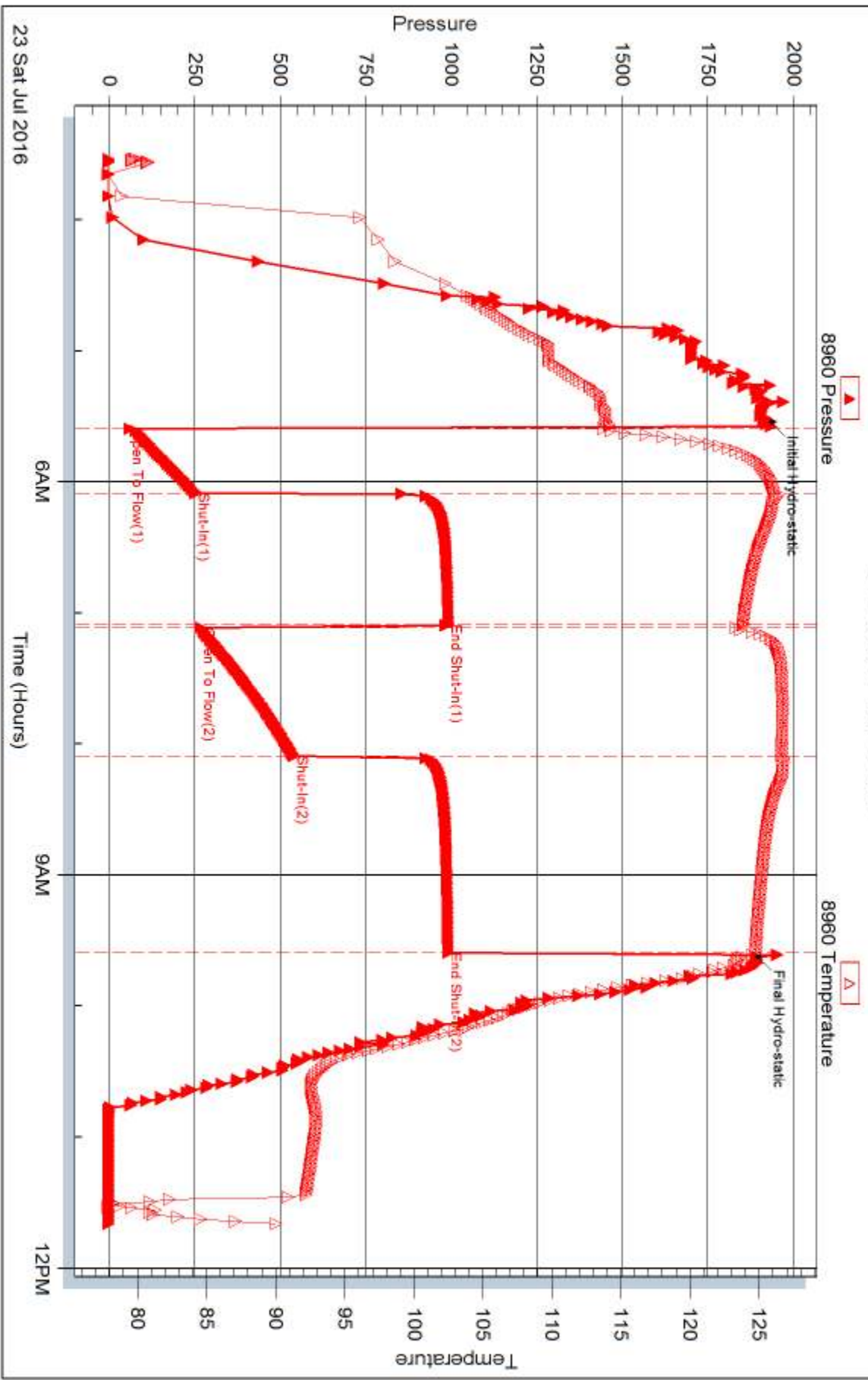


Trilobite Testing, Inc

Ref. No: 65100

Printed: 2016.07.27 @ 15:10:38

Pressure vs. Time





DRILL STEM TEST REPORT

Prepared For: **Stelbar Oil Corporation Incorporated**

1625 N Waterfront Parkway
Suite 200
Wichita KS 67206+6602

ATTN: Dave Goldak

Eikelberger #1-21

21-17s-32w Scott,KS

Start Date: 2016.07.24 @ 04:44:00

End Date: 2016.07.24 @ 12:44:30

Job Ticket #: 65102 DST #: 2

Trilobite Testing, Inc
PO Box 362 Hays, KS 67601
ph: 785-625-4778 fax: 785-625-5620

Printed: 2016.07.27 @ 15:10:15



TRILOBITE TESTING, INC

DRILL STEM TEST REPORT

Stelbar Oil Corporation Incorporated

21-17s-32w Scott,KS

1625 N Waterfront Parkw ay
Suite 200
Wichita KS 67206+6602
ATTN: Dave Goldak

Eikelberger #1-21

Job Ticket: 65102

DST#: 2

Test Start: 2016.07.24 @ 04:44:00

GENERAL INFORMATION:

Formation: **LKC I**

Deviated: No Whipstock: ft (KB)

Time Tool Opened: 06:40:00

Time Test Ended: 12:44:30

Test Type: Conventional Bottom Hole (Initial)

Tester: Ken Swinney

Unit No: 72

Interval: 4194.00 ft (KB) To 4218.00 ft (KB) (TVD)

Reference Elevations: 2999.00 ft (KB)

Total Depth: 4218.00 ft (KB) (TVD)

2994.00 ft (CF)

Hole Diameter: 7.88 inches Hole Condition: Fair

KB to GR/CF: 5.00 ft

Serial #: 6999

Inside

Press@RunDepth: 509.00 psig @ 4214.00 ft (KB)

Capacity: 8000.00 psig

Start Date: 2016.07.24

End Date:

2016.07.24

Last Calib.:

2016.07.24

Start Time: 04:44:05

End Time:

12:44:29

Time On Btm:

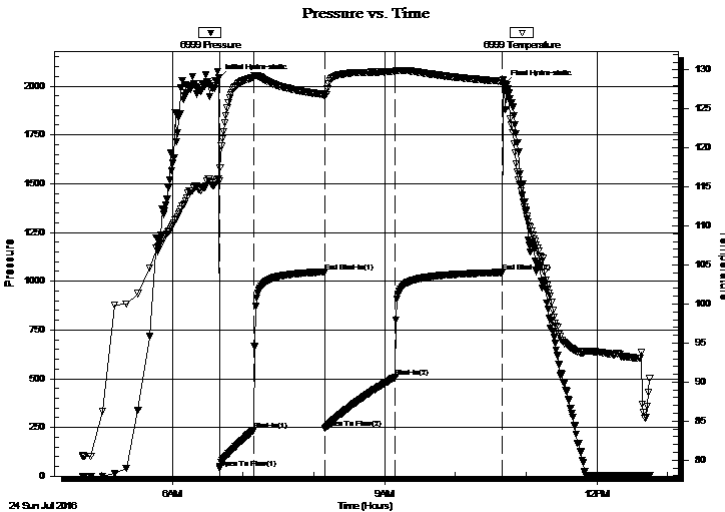
2016.07.24 @ 06:39:30

Time Off Btm:

2016.07.24 @ 10:41:00

TEST COMMENT: IFP 30 Minutes BOB in 8 1/2 minutes
ISI 60 Minutes No blow back
FFP 60 Minutes BOB in 11 1/2 minutes
FSI 90 Minutes No blow back

PRESSURE SUMMARY



Time (Min.)	Pressure (psig)	Temp (deg F)	Annotation
0	2040.48	116.07	Initial Hydro-static
1	41.45	115.83	Open To Flow (1)
30	236.39	129.05	Shut-In(1)
90	1047.67	126.85	End Shut-In(1)
90	245.65	126.62	Open To Flow (2)
150	509.00	129.77	Shut-In(2)
240	1044.67	128.56	End Shut-In(2)
242	2010.02	128.06	Final Hydro-static

Recovery

Length (ft)	Description	Volume (bbl)
1085.00	GCMW Gas 2% Mud 3% Water 95%	14.13

Gas Rates

	Choke (inches)	Pressure (psig)	Gas Rate (Mcf/d)



TRILOBITE TESTING, INC

DRILL STEM TEST REPORT

Stelbar Oil Corporation Incorporated

21-17s-32w Scott,KS

1625 N Waterfront Parkw ay
Suite 200
Wichita KS 67206+6602
ATTN: Dave Goldak

Eikelberger #1-21

Job Ticket: 65102

DST#: 2

Test Start: 2016.07.24 @ 04:44:00

GENERAL INFORMATION:

Formation: **LKC I**

Deviated: No Whipstock: ft (KB)

Time Tool Opened: 06:40:00

Time Test Ended: 12:44:30

Test Type: Conventional Bottom Hole (Initial)

Tester: Ken Swinney

Unit No: 72

Interval: 4194.00 ft (KB) To 4218.00 ft (KB) (TVD)

Reference Elevations: 2999.00 ft (KB)

Total Depth: 4218.00 ft (KB) (TVD)

2994.00 ft (CF)

Hole Diameter: 7.88 inches Hole Condition: Fair

KB to GR/CF: 5.00 ft

Serial #: 8960 Outside

Press@RunDepth: 1043.27 psig @ 4215.00 ft (KB)

Capacity: 8000.00 psig

Start Date: 2016.07.24

End Date:

2016.07.24

Last Calib.:

2016.07.24

Start Time:

04:44:05

End Time:

12:43:59

Time On Btm:

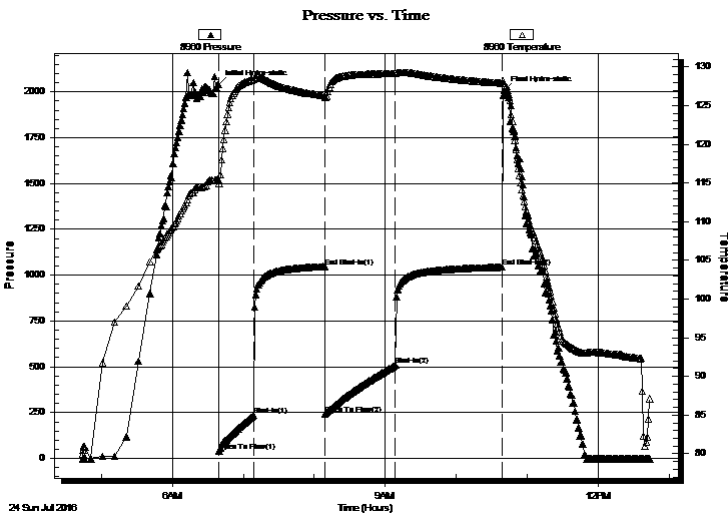
2016.07.24 @ 06:39:00

Time Off Btm:

2016.07.24 @ 10:40:30

TEST COMMENT: IFP 30 Minutes BOB in 8 1/2 minutes
ISI 60 Minutes No blow back
FFP 60 Minutes BOB in 11 1/2 minutes
FSI 90 Minutes No blow back

PRESSURE SUMMARY



Time (Min.)	Pressure (psig)	Temp (deg F)	Annotation
0	2039.23	115.36	Initial Hydro-static
1	39.67	114.91	Open To Flow (1)
30	235.12	128.39	Shut-In(1)
90	1046.69	126.30	End Shut-In(1)
90	243.63	126.00	Open To Flow (2)
150	507.66	129.13	Shut-In(2)
240	1043.27	127.92	End Shut-In(2)
242	2008.20	127.82	Final Hydro-static

Recovery

Length (ft)	Description	Volume (bbl)
1085.00	GCMW Gas 2% Mud 3% Water 95%	14.13

Gas Rates

	Choke (inches)	Pressure (psig)	Gas Rate (Mcf/d)



**TRILOBITE
TESTING, INC**

DRILL STEM TEST REPORT

TOOL DIAGRAM

Stelbar Oil Corporation Incorporated

21-17s-32w Scott,KS

1625 N Waterfront Parkway
Suite 200
Wichita KS 67206+6602
ATTN: Dave Goldak

Eikelberger #1-21

Job Ticket: 65102

DST#: 2

Test Start: 2016.07.24 @ 04:44:00

Tool Information

Drill Pipe:	Length: 4069.00 ft	Diameter: 3.80 inches	Volume: 57.08 bbl	Tool Weight: 2000.00 lb
Heavy Wt. Pipe:	Length: 0.00 ft	Diameter: 0.00 inches	Volume: 0.00 bbl	Weight set on Packer: 20000.00 lb
Drill Collar:	Length: 120.00 ft	Diameter: 2.25 inches	Volume: 0.59 bbl	Weight to Pull Loose: 76000.00 lb
			<u>Total Volume: 57.67 bbl</u>	Tool Chased 0.00 ft
Drill Pipe Above KB:	25.00 ft			String Weight: Initial 56000.00 lb
Depth to Top Packer:	4194.00 ft			Final 62000.00 lb
Depth to Bottom Packer:	ft			
Interval between Packers:	24.00 ft			
Tool Length:	54.00 ft			
Number of Packers:	2	Diameter: 6.75 inches		

Tool Comments:

Tool Description	Length (ft)	Serial No.	Position	Depth (ft)	Accum. Lengths
------------------	-------------	------------	----------	------------	----------------

Shut-In Tool	5.00			4169.00	
Sampler	3.00			4172.00	
Hydraulic tool	5.00			4177.00	
Jars	5.00			4182.00	
Safety Joint	2.00			4184.00	
Top Packer	5.00			4189.00	
Packer	5.00			4194.00	30.00 Bottom Of Top Packer
Anchor	19.00			4213.00	
Recorder	1.00	6999	Inside	4214.00	
Recorder	1.00	8960	Outside	4215.00	
Bullnose	3.00			4218.00	24.00 Anchor Tool

Total Tool Length: 54.00



**TRILOBITE
TESTING, INC**

DRILL STEM TEST REPORT

FLUID SUMMARY

Stelbar Oil Corporation Incorporated

21-17s-32w Scott,KS

1625 N Waterfront Parkway
Suite 200
Wichita KS 67206+6602
ATTN: Dave Goldak

Eikelberger #1-21

Job Ticket: 65102

DST#: 2

Test Start: 2016.07.24 @ 04:44:00

Mud and Cushion Information

Mud Type: Gel Chem

Mud Weight: 9.00 lb/gal

Viscosity: 56.00 sec/qt

Water Loss: 8.75 in³

Resistivity: ohm.m

Salinity: 3300.00 ppm

Filter Cake: 1.00 inches

Cushion Type:

Cushion Length: ft

Cushion Volume: bbl

Gas Cushion Type:

Gas Cushion Pressure: psig

Oil API: deg API

Water Salinity: 27000 ppm

Recovery Information

Recovery Table

Length ft	Description	Volume bbl
1085.00	GCMW Gas 2% Mud 3% Water 95%	14.127

Total Length: 1085.00 ft Total Volume: 14.127 bbl

Num Fluid Samples: 0

Num Gas Bombs: 0

Serial #:

Laboratory Name:

Laboratory Location:

Recovery Comments:

Serial #: 6999

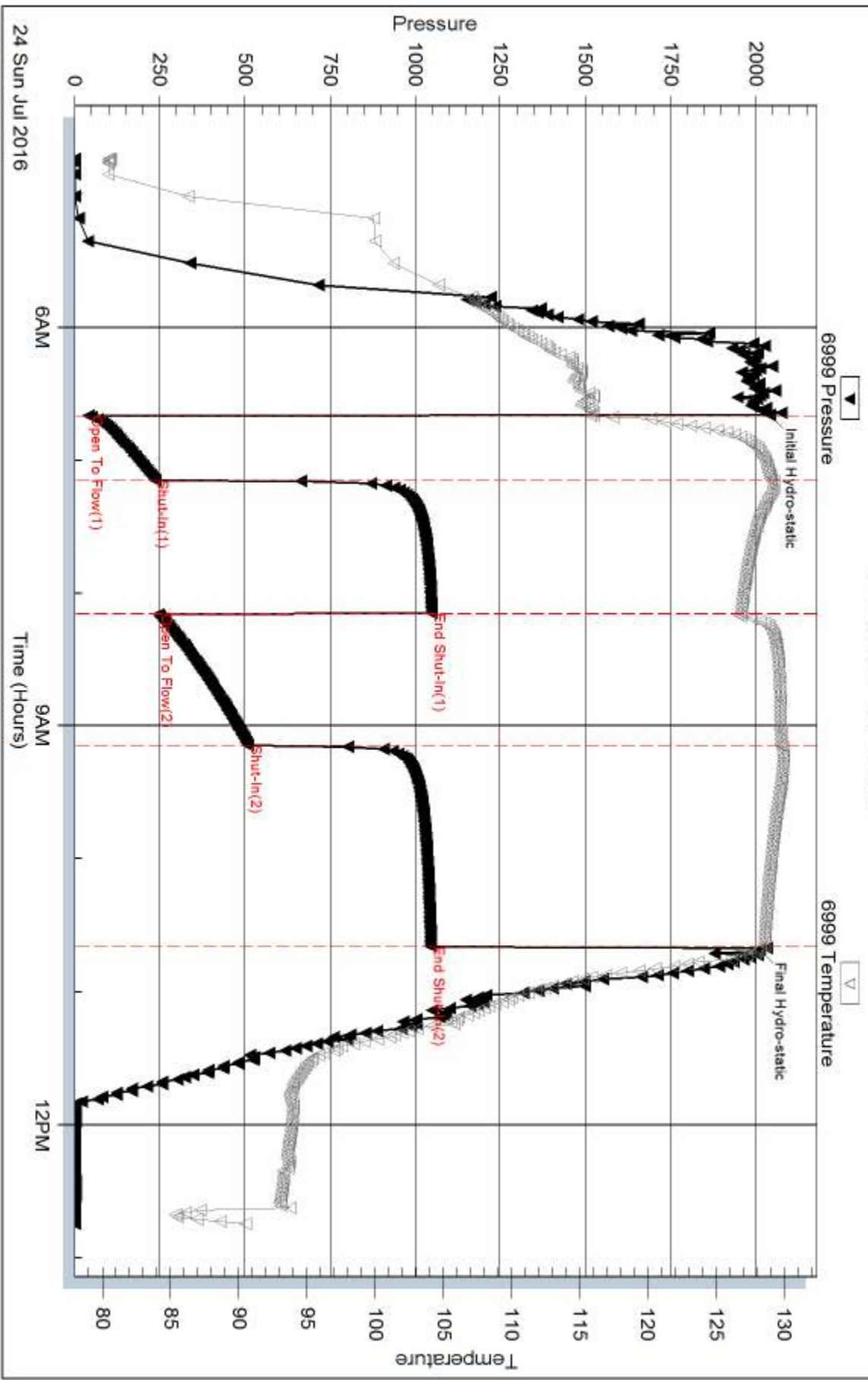
Inside

Stebar Oil Corporation Incorporated

Eikelberger #1-21

DST Test Number: 2

Pressure vs. Time

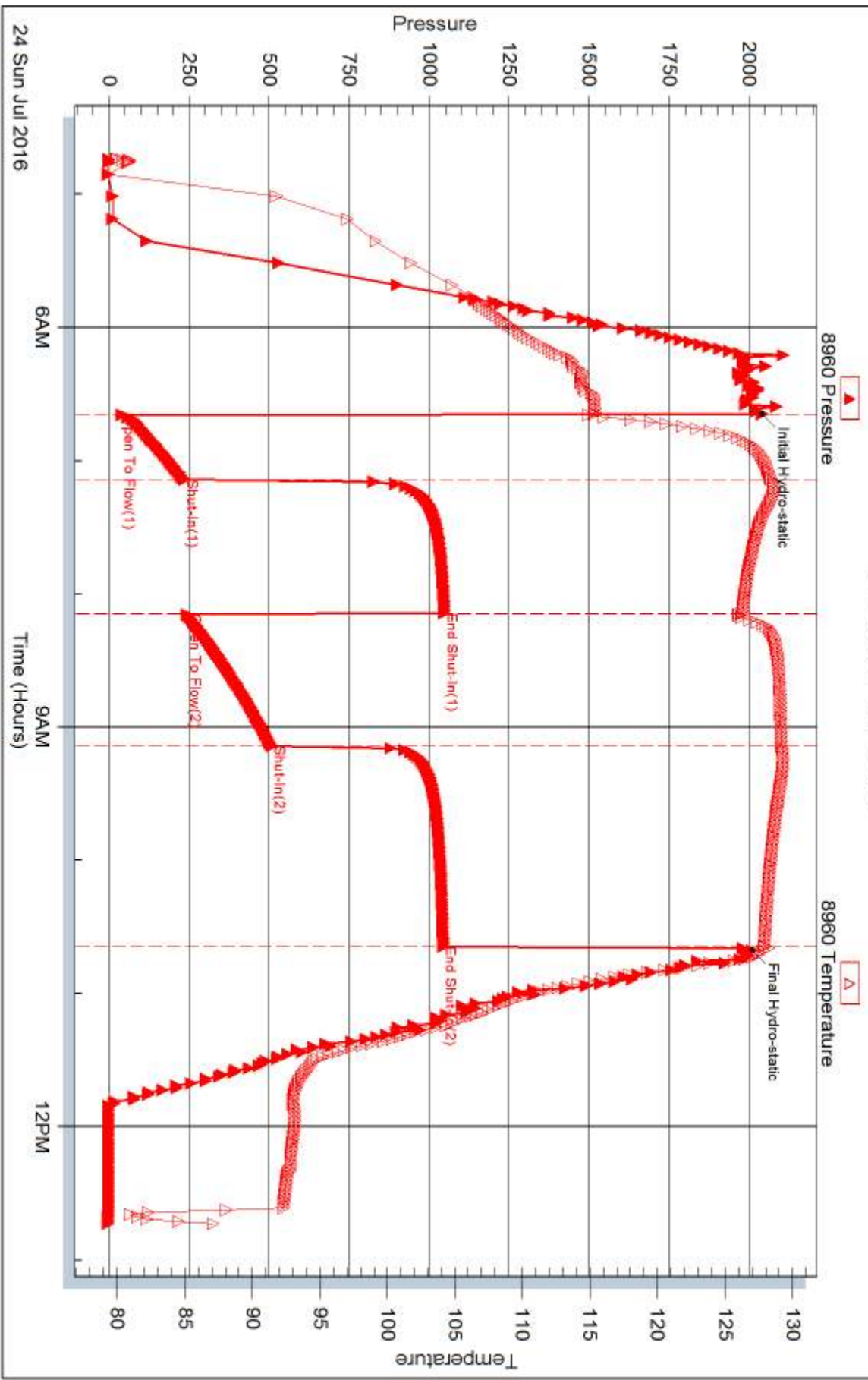


Trilobite Testing, Inc

Ref. No: 65102

Printed: 2016.07.27 @ 15:10:16

Pressure vs. Time





DRILL STEM TEST REPORT

Prepared For: **Stelbar Oil Corporation Incorporated**

1625 N Waterfront Parkway
Suite 200
Wichita KS 67206+6602

ATTN: Dave Goldak

Eikelberger #1-21

21-17s-32w Scott,KS

Start Date: 2016.07.25 @ 06:50:00

End Date: 2016.07.25 @ 10:52:00

Job Ticket #: 65103 DST #: 3

Trilobite Testing, Inc
PO Box 362 Hays, KS 67601
ph: 785-625-4778 fax: 785-625-5620

Printed: 2016.07.27 @ 15:09:53



TRILOBITE TESTING, INC

DRILL STEM TEST REPORT

Stelbar Oil Corporation Incorporated

21-17s-32w Scott, KS

1625 N Waterfront Parkwy
Suite 200
Wichita KS 67206+6602
ATTN: Dave Goldak

Eikelberger #1-21

Job Ticket: 65103

DST#: 3

Test Start: 2016.07.25 @ 06:50:00

GENERAL INFORMATION:

Formation: **Marmaton B**

Deviated: No Whipstock: ft (KB)

Time Tool Opened: 08:15:30

Time Test Ended: 10:52:00

Test Type: Conventional Bottom Hole (Initial)

Tester: Ken Swinney

Unit No: 72

Interval: 4344.00 ft (KB) To 4398.00 ft (KB) (TVD)

Reference Elevations: 2999.00 ft (KB)

Total Depth: 4398.00 ft (KB) (TVD)

2994.00 ft (CF)

Hole Diameter: 7.88 inches Hole Condition: Fair

KB to GR/CF: 5.00 ft

Serial #: 6999 Inside

Press@RunDepth: 76.77 psig @ 4393.55 ft (KB)

Capacity: 8000.00 psig

Start Date: 2016.07.25

End Date:

2016.07.25

Last Calib.:

2016.07.25

Start Time: 06:50:05

End Time:

10:52:00

Time On Btm:

2016.07.25 @ 08:15:00

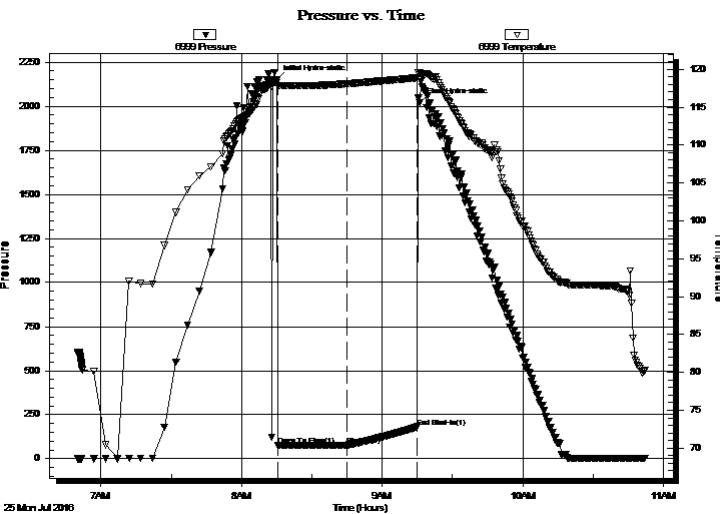
Time Off Btm:

2016.07.25 @ 09:16:00

TEST COMMENT: Initial set on tool had partial packer failure second set on tool packers held

IFP 30 Minutes Dead no blow

ISI 30 Minutes No blow back



PRESSURE SUMMARY

Time (Min.)	Pressure (psig)	Temp (deg F)	Annotation
0	2149.00	118.27	Initial Hydro-static
1	76.08	117.86	Open To Flow (1)
30	76.77	118.09	Shut-In(1)
60	181.49	118.88	End Shut-In(1)
61	2021.85	119.52	Final Hydro-static

Recovery

Length (ft)	Description	Volume (bbl)
70.00	Mud 100%	0.34

Gas Rates

Choke (inches)	Pressure (psig)	Gas Rate (Mcf/d)



TRILOBITE TESTING, INC

DRILL STEM TEST REPORT

Stelbar Oil Corporation Incorporated

21-17s-32w Scott, KS

1625 N Waterfront Parkwy
Suite 200
Wichita KS 67206+6602
ATTN: Dave Goldak

Eikelberger #1-21

Job Ticket: 65103

DST#: 3

Test Start: 2016.07.25 @ 06:50:00

GENERAL INFORMATION:

Formation: **Marmaton B**

Deviated: No Whipstock: ft (KB)

Time Tool Opened: 08:15:30

Time Test Ended: 10:52:00

Test Type: Conventional Bottom Hole (Initial)

Tester: Ken Swinney

Unit No: 72

Interval: 4344.00 ft (KB) To 4398.00 ft (KB) (TVD)

Reference Elevations: 2999.00 ft (KB)

Total Depth: 4398.00 ft (KB) (TVD)

2994.00 ft (CF)

Hole Diameter: 7.88 inches Hole Condition: Fair

KB to GR/CF: 5.00 ft

Serial #: 8960 Outside

Press@RunDepth: 180.48 psig @ 4394.55 ft (KB)

Capacity: 8000.00 psig

Start Date: 2016.07.25

End Date:

2016.07.25

Last Calib.:

2016.07.25

Start Time: 06:50:05

End Time:

10:51:30

Time On Btm:

2016.07.25 @ 08:14:30

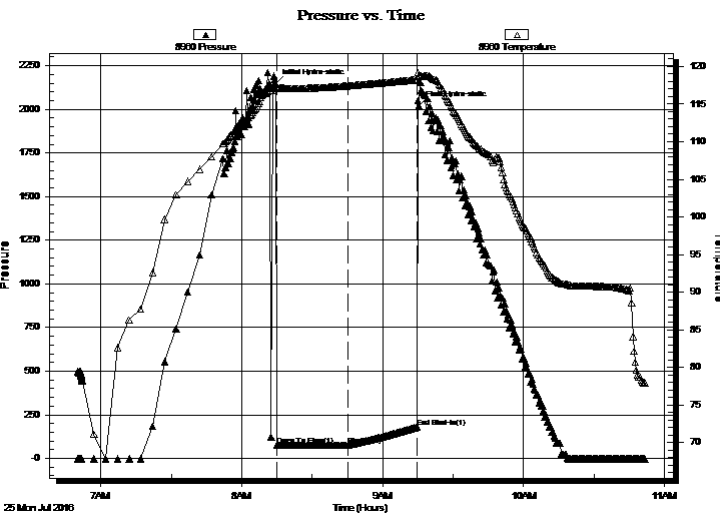
Time Off Btm:

2016.07.25 @ 09:15:30

TEST COMMENT: Initial set on tool had partial packer failure second set on tool packers held

IFP 30 Minutes Dead no blow

ISI 30 Minutes No blow back



PRESSURE SUMMARY

Time (Min.)	Pressure (psig)	Temp (deg F)	Annotation
0	2147.05	117.62	Initial Hydro-static
1	73.89	117.13	Open To Flow (1)
31	76.54	117.42	Shut-In(1)
60	180.48	118.24	End Shut-In(1)
61	2020.02	118.73	Final Hydro-static

Recovery

Length (ft)	Description	Volume (bbl)
70.00	Mud 100%	0.34

Gas Rates

	Choke (inches)	Pressure (psig)	Gas Rate (Mcf/d)



**TRILOBITE
TESTING, INC**

DRILL STEM TEST REPORT

TOOL DIAGRAM

Stelbar Oil Corporation Incorporated

21-17s-32w Scott,KS

1625 N Waterfront Parkway
Suite 200
Wichita KS 67206+6602
ATTN: Dave Goldak

Eikelberger #1-21

Job Ticket: 65103

DST#: 3

Test Start: 2016.07.25 @ 06:50:00

Tool Information

Drill Pipe:	Length: 4197.00 ft	Diameter: 3.80 inches	Volume: 58.87 bbl	Tool Weight: 2000.00 lb
Heavy Wt. Pipe:	Length: 0.00 ft	Diameter: 0.00 inches	Volume: 0.00 bbl	Weight set on Packer: 20000.00 lb
Drill Collar:	Length: 120.00 ft	Diameter: 2.25 inches	Volume: 0.59 bbl	Weight to Pull Loose: 80000.00 lb
			<u>Total Volume: 59.46 bbl</u>	Tool Chased 0.00 ft
Drill Pipe Above KB:	4.00 ft			String Weight: Initial 58000.00 lb
Depth to Top Packer:	4344.00 ft			Final 60000.00 lb
Depth to Bottom Packer:	ft			
Interval between Packers:	53.55 ft			
Tool Length:	84.55 ft			
Number of Packers:	2	Diameter: 6.75 inches		

Tool Comments:

Tool Description	Length (ft)	Serial No.	Position	Depth (ft)	Accum. Lengths
------------------	-------------	------------	----------	------------	----------------

Shut-In Tool	5.00			4318.00	
Sampler	3.00			4321.00	
Hydraulic tool	5.00			4326.00	
Jars	6.00			4332.00	
Safety Joint	2.00			4334.00	
Top Packer	5.00			4339.00	
Packer	5.00			4344.00	31.00 Bottom Of Top Packer
Anchor	1.00			4345.00	
Change Over Sub	1.00			4346.00	
Drill Pipe	31.55			4377.55	
Change Over Sub	1.00			4378.55	
Anchor	14.00			4392.55	
Recorder	1.00	6999	Inside	4393.55	
Recorder	1.00	8960	Outside	4394.55	
Bullnose	3.00			4397.55	53.55 Anchor Tool

Total Tool Length: 84.55



**TRILOBITE
TESTING, INC**

DRILL STEM TEST REPORT

FLUID SUMMARY

Stelbar Oil Corporation Incorporated

21-17s-32w Scott,KS

1625 N Waterfront Parkway
Suite 200
Wichita KS 67206+6602
ATTN: Dave Goldak

Eikelberger #1-21

Job Ticket: 65103

DST#: 3

Test Start: 2016.07.25 @ 06:50:00

Mud and Cushion Information

Mud Type: Gel Chem

Mud Weight: 9.00 lb/gal

Viscosity: 54.00 sec/qt

Water Loss: 7.97 in³

Resistivity: ohm.m

Salinity: 4000.00 ppm

Filter Cake: 1.00 inches

Cushion Type:

Cushion Length: ft

Cushion Volume: bbl

Gas Cushion Type:

Gas Cushion Pressure: psig

Oil API:

Water Salinity: deg API

ppm

Recovery Information

Recovery Table

Length ft	Description	Volume bbl
70.00	Mud 100%	0.344

Total Length: 70.00 ft Total Volume: 0.344 bbl

Num Fluid Samples: 0

Num Gas Bombs: 0

Serial #:

Laboratory Name:

Laboratory Location:

Recovery Comments: Sampler recovery 2500 ml mud

Serial #: 6999

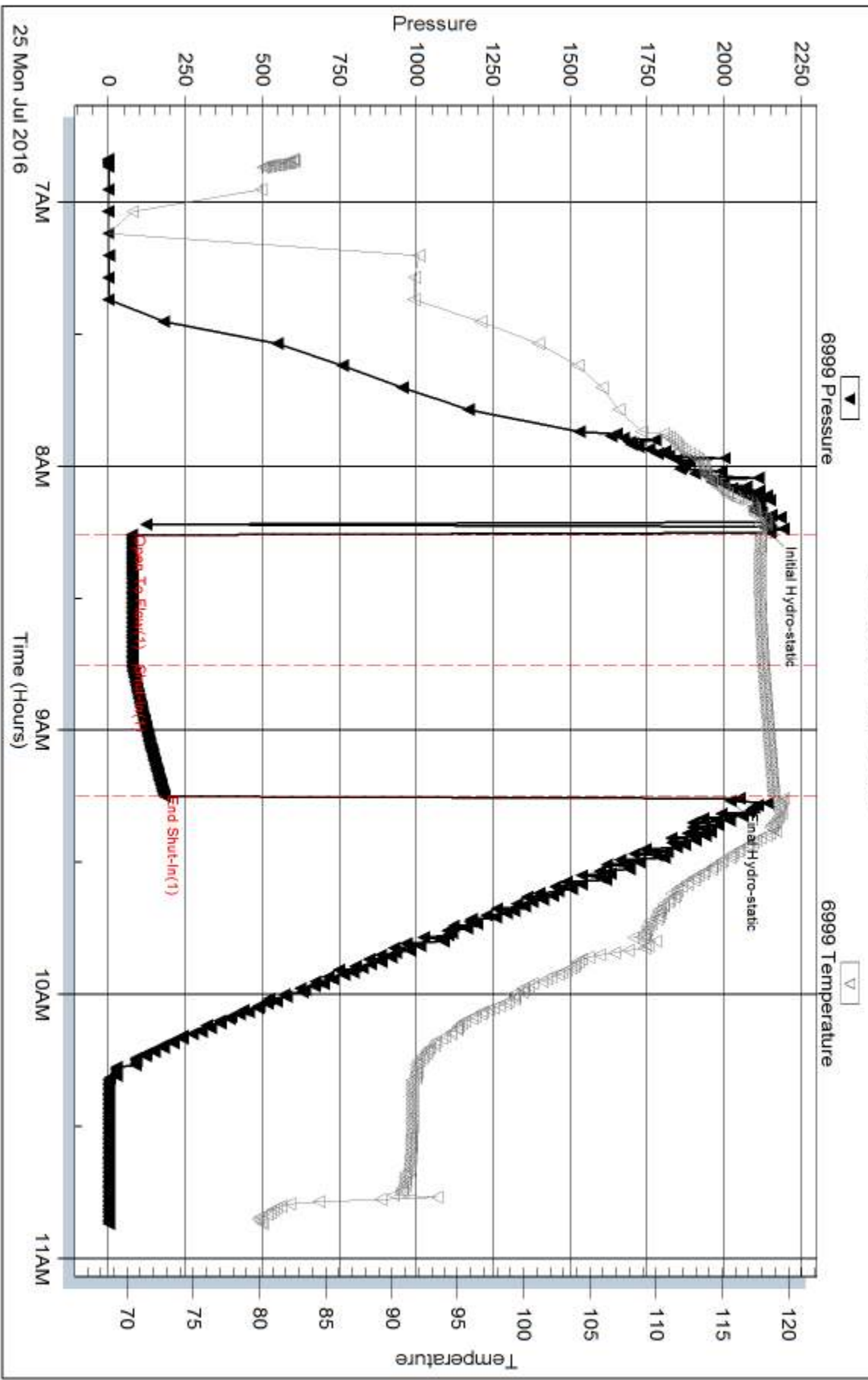
Inside

Stelbar Oil Corporation Incorporated

Eikelberger #1-21

DST Test Number: 3

Pressure vs. Time



Trilobite Testing, Inc

Ref. No: 65103

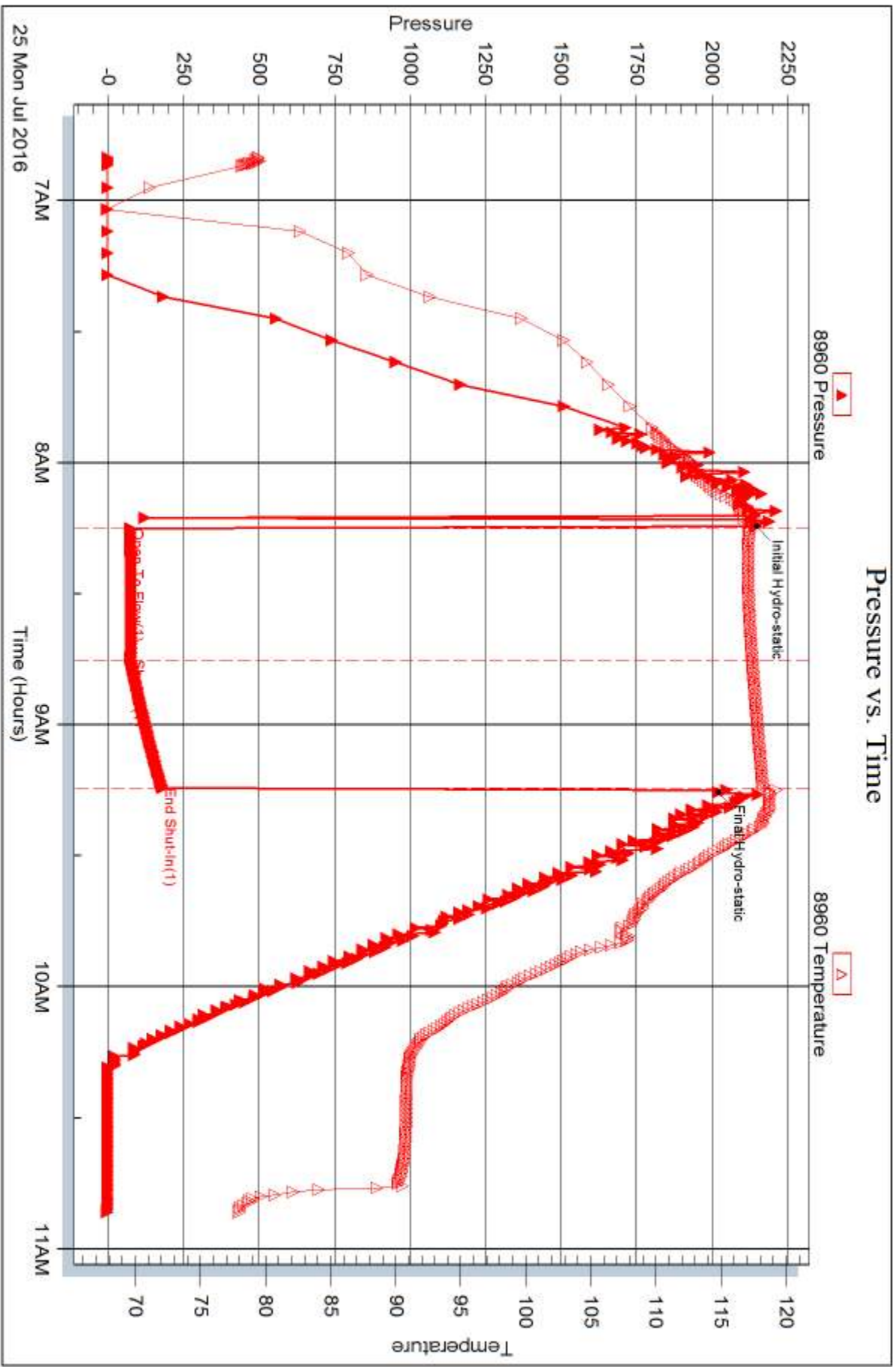
Printed: 2016.07.27 @ 15:09:54

Serial #: 8960

Outside Stellar Oil Corporation Incorporated

Eikelberger #1-21

DST Test Number: 3



Trilobite Testing, Inc

Ref. No: 65103

Printed: 2016.07.27 @ 15:09:55



DRILL STEM TEST REPORT

Prepared For: **Stelbar Oil Corporation Incorporated**

1625 N Waterfront Parkway
Suite 200
Wichita KS 67206+6602

ATTN: Dave Goldak

Eikelberger #1-21

21-17s-32w Scott,KS

Start Date: 2016.07.26 @ 09:56:00

End Date: 2016.07.26 @ 14:09:30

Job Ticket #: 65104 DST #: 4

Trilobite Testing, Inc
PO Box 362 Hays, KS 67601
ph: 785-625-4778 fax: 785-625-5620

Printed: 2016.07.27 @ 15:09:15



TRILOBITE TESTING, INC

DRILL STEM TEST REPORT

Stelbar Oil Corporation Incorporated

21-17s-32w Scott,KS

1625 N Waterfront Parkw ay
Suite 200
Wichita KS 67206+6602
ATTN: Dave Goldak

Eikelberger #1-21

Job Ticket: 65104

DST#: 4

Test Start: 2016.07.26 @ 09:56:00

GENERAL INFORMATION:

Formation: **Johnson**

Deviated: No Whipstock: ft (KB)

Time Tool Opened: 11:29:00

Time Test Ended: 14:09:30

Test Type: Conventional Bottom Hole (Initial)

Tester: Ken Swinney

Unit No: 72

Interval: 4585.00 ft (KB) To 4646.00 ft (KB) (TVD)

Reference Elevations: 2999.00 ft (KB)

Total Depth: 4646.00 ft (KB) (TVD)

2994.00 ft (CF)

Hole Diameter: 7.88 inches Hole Condition: Fair

KB to GR/CF: 5.00 ft

Serial #: 6999 Inside

Press@RunDepth: 41.58 psig @ 4637.32 ft (KB)

Capacity: 8000.00 psig

Start Date: 2016.07.26

End Date:

2016.07.26

Last Calib.:

2016.07.26

Start Time: 09:56:05

End Time:

14:09:30

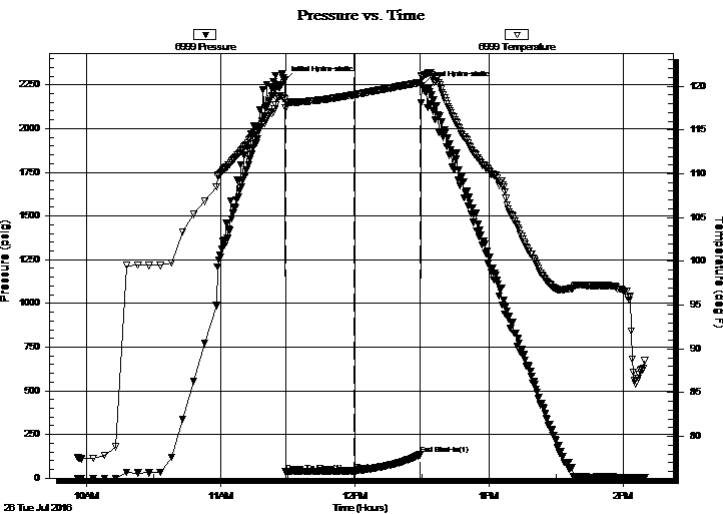
Time On Btm:

2016.07.26 @ 11:28:30

Time Off Btm:

2016.07.26 @ 12:30:00

TEST COMMENT: IFP 30 Minutes 1/4 inch blow died in 9 minutes
ISI 30 Mintues No blow back
Pull test



PRESSURE SUMMARY

Time (Min.)	Pressure (psig)	Temp (deg F)	Annotation
0	2276.82	118.53	Initial Hydro-static
1	36.06	117.49	Open To Flow (1)
31	41.58	119.02	Shut-In(1)
61	134.08	120.42	End Shut-In(1)
62	2247.00	121.07	Final Hydro-static

Recovery

Length (ft)	Description	Volume (bbl)
10.00	Mud 100%	0.05

Gas Rates

	Choke (inches)	Pressure (psig)	Gas Rate (Mcf/d)



TRILOBITE TESTING, INC

DRILL STEM TEST REPORT

Stelbar Oil Corporation Incorporated

21-17s-32w Scott,KS

1625 N Waterfront Parkw ay
Suite 200
Wichita KS 67206+6602
ATTN: Dave Goldak

Eikelberger #1-21

Job Ticket: 65104

DST#: 4

Test Start: 2016.07.26 @ 09:56:00

GENERAL INFORMATION:

Formation: **Johnson**

Deviated: No Whipstock: ft (KB)

Time Tool Opened: 11:29:00

Time Test Ended: 14:09:30

Test Type: Conventional Bottom Hole (Initial)

Tester: Ken Swinney

Unit No: 72

Interval: 4585.00 ft (KB) To 4646.00 ft (KB) (TVD)

Reference Elevations: 2999.00 ft (KB)

Total Depth: 4646.00 ft (KB) (TVD)

2994.00 ft (CF)

Hole Diameter: 7.88 inches Hole Condition: Fair

KB to GR/CF: 5.00 ft

Serial #: 8960 Outside

Press@RunDepth: 133.93 psig @ 4638.32 ft (KB)

Capacity: 8000.00 psig

Start Date: 2016.07.26

End Date:

2016.07.26

Last Calib.:

2016.07.26

Start Time: 09:56:05

End Time:

14:09:00

Time On Btm:

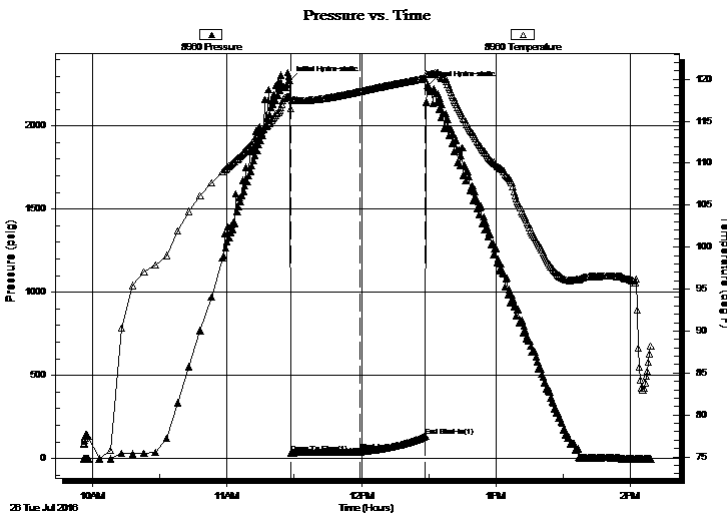
2016.07.26 @ 11:28:00

Time Off Btm:

2016.07.26 @ 12:29:30

TEST COMMENT: IFP 30 Minutes 1/4 inch blow died in 9 minutes
ISI 30 Mintues No blow back
Pull test

PRESSURE SUMMARY



Time (Min.)	Pressure (psig)	Temp (deg F)	Annotation
0	2274.63	117.90	Initial Hydro-static
1	33.35	116.52	Open To Flow (1)
32	40.19	118.56	Shut-In(1)
61	133.93	120.11	End Shut-In(1)
62	2245.18	120.54	Final Hydro-static

Recovery

Length (ft)	Description	Volume (bbl)
10.00	Mud 100%	0.05

Gas Rates

Choke (inches)	Pressure (psig)	Gas Rate (Mcf/d)



**TRILOBITE
TESTING, INC**

DRILL STEM TEST REPORT

TOOL DIAGRAM

Stelbar Oil Corporation Incorporated

21-17s-32w Scott,KS

1625 N Waterfront Parkway
Suite 200
Wichita KS 67206+6602
ATTN: Dave Goldak

Eikelberger #1-21

Job Ticket: 65104

DST#: 4

Test Start: 2016.07.26 @ 09:56:00

Tool Information

Drill Pipe:	Length: 4447.00 ft	Diameter: 3.80 inches	Volume: 62.38 bbl	Tool Weight: 2000.00 lb
Heavy Wt. Pipe:	Length: 0.00 ft	Diameter: 0.00 inches	Volume: 0.00 bbl	Weight set on Packer: 20000.00 lb
Drill Collar:	Length: 120.00 ft	Diameter: 2.25 inches	Volume: 0.59 bbl	Weight to Pull Loose: 72000.00 lb
			<u>Total Volume: 62.97 bbl</u>	Tool Chased 0.00 ft
Drill Pipe Above KB:	13.00 ft			String Weight: Initial 60000.00 lb
Depth to Top Packer:	4585.00 ft			Final 60000.00 lb
Depth to Bottom Packer:	ft			
Interval between Packers:	56.32 ft			
Tool Length:	87.32 ft			
Number of Packers:	2	Diameter: 6.75 inches		

Tool Comments:

Tool Description

Length (ft) Serial No. Position Depth (ft) Accum. Lengths

Shut-In Tool	5.00			4559.00	
Sampler	3.00			4562.00	
Hydraulic tool	5.00			4567.00	
Jars	6.00			4573.00	
Safety Joint	2.00			4575.00	
Top Packer	5.00			4580.00	
Packer	5.00			4585.00	31.00 Bottom Of Top Packer
Anchor	4.00			4589.00	
Change Over Sub	1.00			4590.00	
Drill Pipe	31.32			4621.32	
Change Over Sub	1.00			4622.32	
Anchor	14.00			4636.32	
Recorder	1.00	6999	Inside	4637.32	
Recorder	1.00	8960	Outside	4638.32	
Bullnose	3.00			4641.32	56.32 Anchor Tool

Total Tool Length: 87.32



**TRILOBITE
TESTING, INC**

DRILL STEM TEST REPORT

FLUID SUMMARY

Stelbar Oil Corporation Incorporated

21-17s-32w Scott,KS

1625 N Waterfront Parkway
Suite 200
Wichita KS 67206+6602
ATTN: Dave Goldak

Eikelberger #1-21

Job Ticket: 65104

DST#: 4

Test Start: 2016.07.26 @ 09:56:00

Mud and Cushion Information

Mud Type: Gel Chem
Mud Weight: 9.00 lb/gal
Viscosity: 54.00 sec/qt
Water Loss: 7.19 in³
Resistivity: ohm.m
Salinity: 4200.00 ppm
Filter Cake: 1.00 inches

Cushion Type:
Cushion Length: ft
Cushion Volume: bbl
Gas Cushion Type:
Gas Cushion Pressure: psig

Oil API: deg API
Water Salinity: ppm

Recovery Information

Recovery Table

Length ft	Description	Volume bbl
10.00	Mud 100%	0.049

Total Length: 10.00 ft Total Volume: 0.049 bbl

Num Fluid Samples: 0 Num Gas Bombs: 0 Serial #:

Laboratory Name: Laboratory Location:

Recovery Comments: Sampler Recovery
2500 ml mud
30 psi

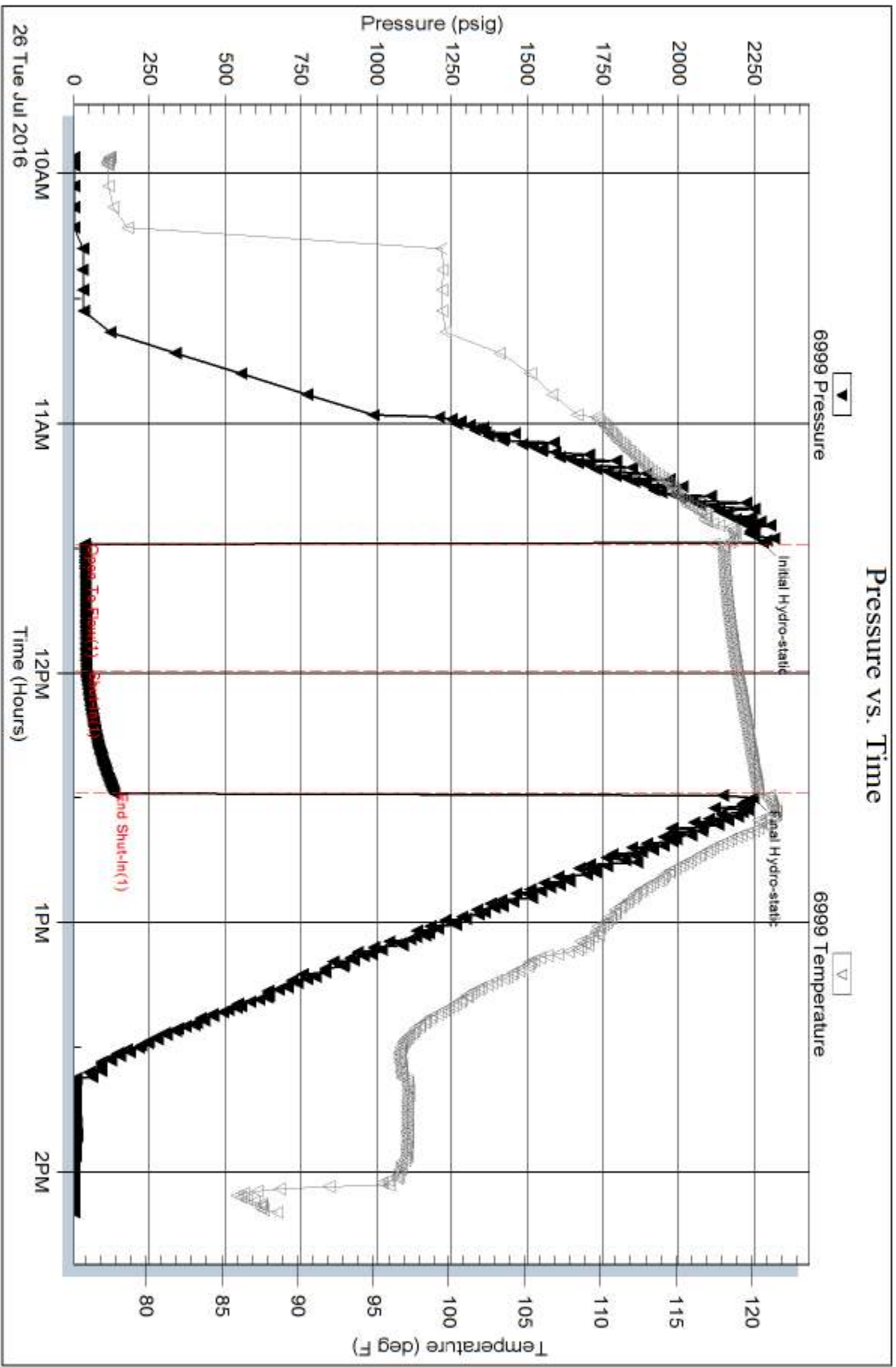
Serial #: 6999

Inside

Stelbar Oil Corporation Incorporated

Eikelberger #1-21

DST Test Number: 4



Trilobite Testing, Inc

Ref. No: 65104

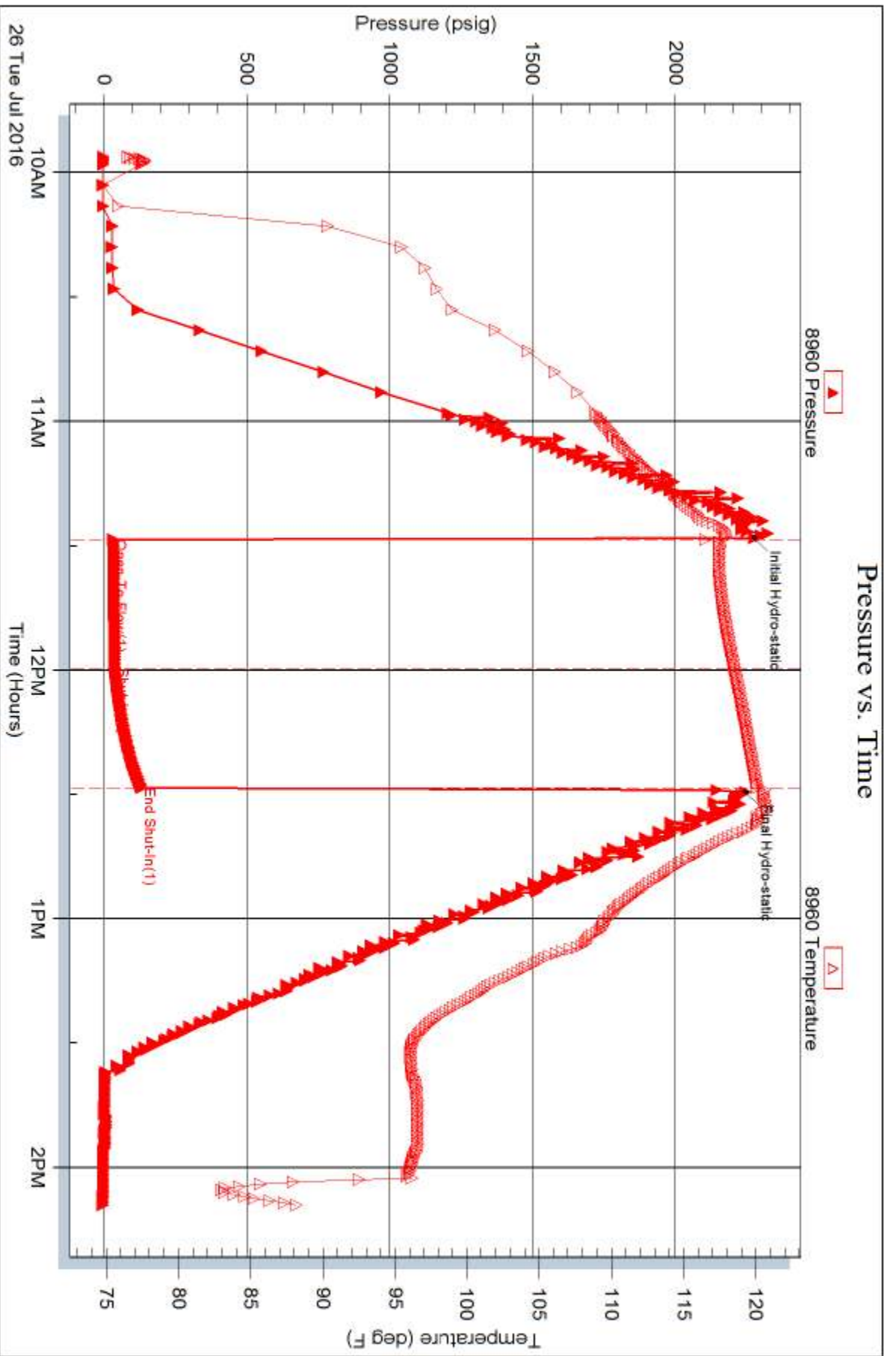
Printed: 2016.07.27 @ 15:09:17

Serial #: 8960

Outside Stellar Oil Corporation Incorporated

Eikelberger #1-21

DST Test Number: 4





TRILOBITE TESTING INC.

1515 Commerce Parkway • Hays, Kansas 67601

Test Ticket

NO. **65100**

Well Name & No. Eikelberger #1-21 Test No. 1 Date 23 July 16
 Company Stelbar Oil Corporation Incorporated Elevation 2999 KB 2894 GL
 Address 1625 N Waterfront Parkway Suite 200 Wichita, Kansas 67206+6602
 Co. Rep / Geo. Dave Goldak Rig WW Rig 10[#]
 Location: Sec. 21 Twp. 17S Rge. 32W Co. Scott State KS

Interval Tested 3999-4028 Zone Tested Lansing/Kansas City zone B
 Anchor Length 29 Drill Pipe Run 3853 Mud Wt. 8.8
 Top Packer Depth 3994 Drill Collars Run 120 Vis 68
 Bottom Packer Depth 3999 Wt. Pipe Run - WL 7.2
 Total Depth 4028 Chlorides 3000 ppm System LCM 1#

Blow Description I.F. Blow built to bottom of bucket in 9 minutes
I.S.I. no blow back
F.F. Blow built to bottom of bucket in 11 minutes
F.S.I. no blow back

Rec	Feet of	%gas	%oil	%water	%mud
<u>1147</u>	<u>muddy water with slow soil</u>			<u>95</u>	<u>5</u>
Rec	Feet of	%gas	%oil	%water	%mud
Rec	Feet of	%gas	%oil	%water	%mud
Rec	Feet of	%gas	%oil	%water	%mud
Rec	Feet of	%gas	%oil	%water	%mud

Rec Total 1147 BHT 125 Gravity _____ API RW .187 @ 97 °F Chlorides 25000 ppm

(A) Initial Hydrostatic <u>1933</u>	<input checked="" type="checkbox"/> Test <u>1150</u>	T-On Location <u>2:34 am</u>
(B) First Initial Flow <u>70</u>	<input checked="" type="checkbox"/> Jars <u>250</u>	T-Started <u>3:31 am</u>
(C) First Final Flow <u>255</u>	<input checked="" type="checkbox"/> Safety Joint <u>75</u>	T-Open <u>5:35 am</u>
(D) Initial Shut-In <u>992</u>	<input type="checkbox"/> Circ Sub _____	T-Pulled <u>9:35 am</u>
(E) Second Initial Flow <u>265</u>	<input type="checkbox"/> Hourly Standby _____	T-Out <u>11:40 am</u>
(F) Second Final Flow <u>541</u>	<input checked="" type="checkbox"/> Mileage <u>16 12</u>	Comments <u>Initial attempt to set partial packer 9.1</u>
(G) Final Shut-In <u>991</u>	<input checked="" type="checkbox"/> Sampler <u>250</u>	
(H) Final Hydrostatic <u>1898</u>	<input type="checkbox"/> Straddle _____	<input type="checkbox"/> Ruined Shale Packer _____
Initial Open <u>30</u>	<input type="checkbox"/> Shale Packer _____	<input type="checkbox"/> Ruined Packer _____
Initial Shut-In <u>60</u>	<input type="checkbox"/> Extra Packer _____	<input type="checkbox"/> Extra Copies _____
Final Flow <u>60</u>	<input type="checkbox"/> Extra Recorder _____	Sub Total <u>0</u>
Final Shut-In <u>90</u>	<input type="checkbox"/> Day Standby _____	Total <u>1737</u>
	<input type="checkbox"/> Accessibility _____	MP/DST Disc't _____
	Sub Total <u>1737</u>	

Approved By [Signature] Our Representative [Signature]

Trilobite Testing Inc. shall not be liable for damaged of any kind of the property or personnel of the one for whom a test is made, or for any loss suffered or sustained, directly or indirectly, through the use of its equipment, or its statements or opinion concerning the results of any test, tools lost or damaged in the hole shall be paid for at cost by the party for whom the test is made.



TRILOBITE TESTING, INC.
1515 Commerce Parkway • Hays, Kansas 67601

FLUID SAMPLER DATA

Ticket No. 65100 Date 23 July 16
Company Name Stelber Oil Corporation Inc.
Lease Eikelberger 1-21 Test No. 1
County Scott Sec. 21 Twp. 175 Rng. 32W

SAMPLER RECOVERY

Gas _____ ML
Oil _____ ML
Mud 100 ML
Water 2400 ML
Other _____ ML
Pressure 100 psi ML
Total 2500 ML

PIT MUD ANALYSIS

Chlorides 3000 ppm.
Resistivity _____ ohms @ _____ F
Viscosity 68
Mud Weight 8.8
Filtrate 7.2
Other _____

SAMPLER ANALYSIS

Resistivity .185 ohms @ 97 F
Chlorides 25,000 ppm.
Gravity _____ corrected @60F

PIPE RECOVERY

TOP
Resistivity .190 ohms @ 95 F
Chlorides 25,500 ppm.
MIDDLE
Resistivity _____ ohms @ _____ F
Chlorides _____ ppm.
BOTTOM
Resistivity .187 ohms @ 97 F
Chlorides 25,000 ppm.



TRILOBITE TESTING INC.

1515 Commerce Parkway • Hays, Kansas 67601

Test Ticket

NO. **65102**

Well Name & No. Eikelberger #1-21 Test No. 2 Date 24 July 16
 Company Stelbar Oil Corporation Incorporated Elevation 2999 KB 2994 GL
 Address 1625 N Waterfront Parkway Suite 200 Wichita Kansas 67206+6602
 Co. Rep / Geo. Dave Goldak Rig WW Rig 10
 Location: Sec. 21 Twp. 17S Rge. 32W Co. Scott State KS

Interval Tested 4194-4218 Zone Tested Lansing/Kansas City zone I
 Anchor Length 24 Drill Pipe Run 4069 Mud Wt. 9.2
 Top Packer Depth 4189 Drill Collars Run 120 Vis 56
 Bottom Packer Depth 4194 Wt. Pipe Run - WL 8.8
 Total Depth 4218 Chlorides 3300 ppm System LCM 2#

Blow Description I.F. Blow built to bottom of bucket in 8 1/2 minutes
I.S.I. No blow back
F.F. Blow built to bottom of bucket in 11 1/2 minutes
F.S.I. No blow back

Rec	Feet of	%gas	%oil	%water	%mud
<u>1085</u>	<u>Gas & Mud cut Water show oil</u>	<u>2%</u>	<u>95%</u>	<u>3%</u>	<u>0%</u>
Rec	Feet of	%gas	%oil	%water	%mud
Rec	Feet of	%gas	%oil	%water	%mud
Rec	Feet of	%gas	%oil	%water	%mud
Rec	Feet of	%gas	%oil	%water	%mud

Rec Total 1085 BHT 128 Gravity _____ API RW .192 @ 91 °F Chlorides 27,000 ppm

(A) Initial Hydrostatic <u>2040</u>	<input checked="" type="checkbox"/> Test <u>1150</u>	T-On Location <u>1:51 am</u>
(B) First Initial Flow <u>41</u>	<input checked="" type="checkbox"/> Jars <u>250</u>	T-Started <u>4:44 am</u>
(C) First Final Flow <u>236</u>	<input checked="" type="checkbox"/> Safety Joint <u>75</u>	T-Open <u>6:28 am</u>
(D) Initial Shut-In <u>1047</u>	<input type="checkbox"/> Circ Sub _____	T-Pulled <u>10:28 am</u>
(E) Second Initial Flow <u>245</u>	<input type="checkbox"/> Hourly Standby _____	T-Out <u>12:33 pm</u>
(F) Second Final Flow <u>509</u>	<input checked="" type="checkbox"/> Mileage <u>16</u> <u>12</u>	Comments _____
(G) Final Shut-In <u>1044</u>	<input checked="" type="checkbox"/> Sampler <u>250</u>	_____
(H) Final Hydrostatic <u>2010</u>	<input type="checkbox"/> Straddle _____	<input type="checkbox"/> Ruined Shale Packer _____
Initial Open <u>30</u>	<input type="checkbox"/> Shale Packer _____	<input type="checkbox"/> Ruined Packer _____
Initial Shut-In <u>60</u>	<input type="checkbox"/> Extra Packer _____	<input type="checkbox"/> Extra Copies _____
Final Flow <u>60</u>	<input type="checkbox"/> Extra Recorder _____	Sub Total <u>0</u>
Final Shut-In <u>90</u>	<input type="checkbox"/> Day Standby _____	Total <u>1737</u>
	<input type="checkbox"/> Accessibility _____	MP/DST Disc't _____
	Sub Total <u>1737</u>	

Approved By [Signature] Our Representative [Signature]

Trilobite Testing Inc. shall not be liable for damaged of any kind of the property or personnel of the one for whom a test is made, or for any loss suffered or sustained, directly or indirectly, through the use of its equipment, or its statements or opinion concerning the results of any test, tools lost or damaged in the hole shall be paid for at cost by the party for whom the test is made.



TRILOBITE TESTING, INC.

1515 Commerce Parkway • Hays, Kansas 67601

FLUID SAMPLER DATA

Ticket No. 65102 Date 24 July 16

Company Name Stelbar Oil Cooperation Incorporated

Lease Eikelberger #1-21 Test No. 2

County Scott Sec. 21 Twp. 17S Rng. 32W

SAMPLER RECOVERY

Gas 2500 ML

Oil _____ ML

Mud _____ ML

Water _____ ML

Other _____ ML

Pressure _____ ML

Total _____ ML

PIT MUD ANALYSIS

Chlorides 3300 ppm.

Resistivity _____ ohms @ _____ F

Viscosity 56

Mud Weight 9.2

Filtrate 8.8

Other _____

SAMPLER ANALYSIS

Resistivity _____ ohms @ _____ F

Chlorides _____ ppm.

Gravity _____ corrected @60F

PIPE RECOVERY

TOP

Resistivity .203 ohms @ 91 F

Chlorides 25000 ppm.

MIDDLE

Resistivity .192 ohms @ 91 F

Chlorides 27000 ppm.

BOTTOM

Resistivity .185 ohms @ 91 F

Chlorides 28000 ppm.



TRILOBITE TESTING INC.

1515 Commerce Parkway • Hays, Kansas 67601

Test Ticket

NO. **65103**

Well Name & No. Eikelberger #1-21 Test No. 3 Date 25 July 16
 Company Stelbar Oil Company Incorporated Elevation 2999 KB 2994 GL
 Address 1625 N Waterfront Parkway Suite 200 Wichita Kansas 67206+6602
 Co. Rep / Geo. Dave Goldak Rig WW Rig 10
 Location: Sec. 21 Twp. 17S Rge. 32W Co. Scott State KS

Interval Tested 4341-4398 Zone Tested Marmaton B
 Anchor Length 54 Drill Pipe Run 4197 Mud Wt. 9.2
 Top Packer Depth 4339 Drill Collars Run 120 Vis 54
 Bottom Packer Depth 4344 Wt. Pipe Run — WL 8.0
 Total Depth 4398 Chlorides 4000 ppm System LCM 2#

Blow Description Initial set on tool partial packer failure second set ok
I.F. Dead no blow
I.S.I no bbw back
Pull tool

Rec	Feet of	%gas	%oil	%water	%mud
<u>70</u>	<u>Mud</u>				<u>100%</u>
Rec	Feet of	%gas	%oil	%water	%mud
Rec	Feet of	%gas	%oil	%water	%mud
Rec	Feet of	%gas	%oil	%water	%mud
Rec	Feet of	%gas	%oil	%water	%mud

Rec Total 70 BHT 118 Gravity _____ API RW _____ @ _____ °F Chlorides _____ ppm

(A) Initial Hydrostatic 2149 Test 1150 T-On Location 3:05 am
 (B) First Initial Flow 76 Jars 250 T-Started 6:50 am
 (C) First Final Flow 76 Safety Joint 75 T-Open 8:15 am
 (D) Initial Shut-In 181 Circ Sub _____ T-Pulled 9:15 am
 (E) Second Initial Flow 2021 Hourly Standby _____ T-Out 10:52 am
 (F) Second Final Flow _____ Mileage 16 12 Comments _____
 (G) Final Shut-In _____ Sampler 250 _____
 (H) Final Hydrostatic _____ Straddle _____ Ruined Shale Packer _____
 Shale Packer _____ Ruined Packer _____
 Extra Packer _____ Extra Copies _____
 Initial Open 30 Extra Recorder _____ Sub Total 0
 Initial Shut-In 30 Day Standby _____ Total 1737
 Final Flow — Accessibility _____ MP/DST Disc't _____
 Final Shut-In _____ Sub Total 1737

Approved By [Signature]

Our Representative [Signature]

Trilobite Testing Inc. shall not be liable for damaged of any kind of the property or personnel of the one for whom a test is made, or for any loss suffered or sustained, directly or indirectly, through the use of its equipment, or its statements or opinion concerning the results of any test, tools lost or damaged in the hole shall be paid for at cost by the party for whom the test is made.



TRILOBITE TESTING, INC.

1515 Commerce Parkway • Hays, Kansas 67601

FLUID SAMPLER DATA

Ticket No. 65103 Date 25 July 16
 Company Name Stelbar Oil Company Incorporated
 Lease Eikelberger #1-21 Test No. 3
 County Scott Sec. 21 Twp. 17S Rng. 32W

SAMPLER RECOVERY

Gas _____ ML
 Oil _____ ML
 Mud 2500 ML
 Water _____ ML
 Other _____ ML
 Pressure 30 ML
 Total 2500 ML

PIT MUD ANALYSIS

Chlorides 4000 ppm.
 Resistivity _____ ohms @ _____ F
 Viscosity 54
 Mud Weight 9.2
 Filtrate 8.0
 Other _____

SAMPLER ANALYSIS

Resistivity _____ ohms @ _____ F
 Chlorides _____ ppm.
 Gravity _____ corrected @60F

PIPE RECOVERY

TOP
 Resistivity _____ ohms @ _____ F
 Chlorides _____ ppm.

MIDDLE
 Resistivity _____ ohms @ _____ F
 Chlorides _____ ppm.

BOTTOM
 Resistivity _____ ohms @ _____ F
 Chlorides _____ ppm.



TRILOBITE TESTING INC.

1515 Commerce Parkway • Hays, Kansas 67601

Test Ticket

NO. **65104**

Well Name & No. E. Kolberger #1-21 Test No. 4 Date 26 July 16
 Company Stelbar Oil Company Incorporated Elevation 2999 KB 2994 GL
 Address 1625 N Waterfront Parkway Suite 200 Wichita Kansas 67206+6602
 Co. Rep / Geo. Dave Goldak Rig WW Rig 10
 Location: Sec. 21 Twp. 17S Rge. 32W Co. Scott State KS

Interval Tested 4590 - 4646 Zone Tested Johnson
 Anchor Length 56 Drill Pipe Run 4447 Mud Wt. 9.2
 Top Packer Depth 4585 Drill Collars Run 120 Vis 54
 Bottom Packer Depth 4590 Wt. Pipe Run - WL 7.2
 Total Depth 4646 Chlorides 4200 ppm System LCM 2#
 Blow Description I.F. 1/4 inch blow died in 9 minutes
I.S.I no blow back
Pull test

Rec	Feet of	%gas	%oil	%water	%mud
10	Mud			100	

Rec Total 10 BHT 121 Gravity _____ API RW _____ @ _____ °F Chlorides _____ ppm

(A) Initial Hydrostatic <u>2276</u>	<input checked="" type="checkbox"/> Test <u>1150</u>	T-On Location <u>6:51 am</u>
(B) First Initial Flow <u>36</u>	<input checked="" type="checkbox"/> Jars <u>250</u>	T-Started <u>9:56 am</u>
(C) First Final Flow <u>41</u>	<input checked="" type="checkbox"/> Safety Joint <u>75</u>	T-Open <u>11:29 am</u>
(D) Initial Shut-In <u>134</u>	<input type="checkbox"/> Circ Sub _____	T-Pulled <u>12:29 pm</u>
(E) Second Initial Flow <u>-</u>	<input type="checkbox"/> Hourly Standby _____	T-Out <u>2:10 pm</u>
(F) Second Final Flow <u>-</u>	<input checked="" type="checkbox"/> Mileage <u>16 24</u>	Comments _____
(G) Final Shut-In <u>-</u>	<input checked="" type="checkbox"/> Sampler <u>250</u>	<u>loaded 6/26 22:00</u>
(H) Final Hydrostatic <u>2247</u>	<input type="checkbox"/> Straddle _____	<input type="checkbox"/> Ruined Shale Packer _____
Initial Open <u>30</u>	<input type="checkbox"/> Shale Packer _____	<input type="checkbox"/> Ruined Packer _____
Initial Shut-In <u>30</u>	<input type="checkbox"/> Extra Packer _____	<input type="checkbox"/> Extra Copies _____
Final Flow <u>-</u>	<input type="checkbox"/> Extra Recorder _____	Sub Total <u>0</u>
Final Shut-In <u>-</u>	<input type="checkbox"/> Day Standby _____	Total <u>1749</u>
	<input type="checkbox"/> Accessibility _____	MP/DST Disc't _____
	Sub Total <u>1749</u>	

Approved By [Signature] Our Representative [Signature]

Trilobite Testing Inc. shall not be liable for damaged of any kind of the property or personnel of the one for whom a test is made, or for any loss suffered or sustained, directly or indirectly, through the use of its equipment, or its statements or opinion concerning the results of any test, tools lost or damaged in the hole shall be paid for at cost by the party for whom the test is made.



TRILOBITE TESTING, INC.

1515 Commerce Parkway • Hays, Kansas 67601

FLUID SAMPLER DATA

Ticket No. 65104 Date 26 July 16
 Company Name Stelgar Oil Company Incorporated
 Lease Eikelberger 1-21 Test No. 4
 County Scott Sec. 21 Twp. 17S Rng. 32W

SAMPLER RECOVERY

Gas _____ ML
 Oil _____ ML
 Mud 2500 ML
 Water _____ ML
 Other _____ ML
 Pressure 30 ML
 Total 2500 ML

PIT MUD ANALYSIS

Chlorides _____ ppm.
 Resistivity _____ ohms @ _____ F
 Viscosity _____
 Mud Weight _____
 Filtrate _____
 Other _____

SAMPLER ANALYSIS

Resistivity _____ ohms @ _____ F
 Chlorides _____ ppm.
 Gravity _____ corrected @60F

PIPE RECOVERY

TOP
 Resistivity _____ ohms @ _____ F
 Chlorides _____ ppm.
MIDDLE
 Resistivity _____ ohms @ _____ F
 Chlorides _____ ppm.
BOTTOM
 Resistivity _____ ohms @ _____ F
 Chlorides _____ ppm.