

# Section 37, LLC

## GEOLOGIST'S REPORT DRILLING TIME AND SAMPLE LOG

COMPANY **Mike Kelso Oil, Inc.**

LEASE **Wonder Mud #14-1**

FIELD **Thistle Grove**

LOCATION **330° FSL & 1155° FWL**

SEC **14** TWP **17S** RGE **21W**

COUNTY **Ness** STATE **Kansas**

CONTRACTOR **Sky Top Rig #1**

SPUD **5/20/16** COMP **5/29/16**

RTD **4234'** LTD **4232'**

MUD UP **TYPE MUD** Chemical

SAMPLES SAVED FROM **3300'** TO **RTD**

DRILLING TIME KEPT FROM **3300'** TO **RTD**

SAMPLES EXAMINED FROM **3300'** TO **RTD**

GEOLOGICAL SUPERVISION FROM **3300'**

ELEVATIONS  
KB **2183'**

DF \_\_\_\_\_

GL **2176'**

Measurements Are All From **Kelly Bushing**

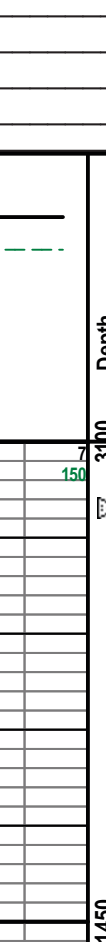
CASING

CONDUCTOR SURFACE **8-5/8" at 340'**

PRODUCTION **5.5" at 4233'**

ELECTRICAL SURVEYS  
Pioneer Wireline  
DILL, CND, MIC

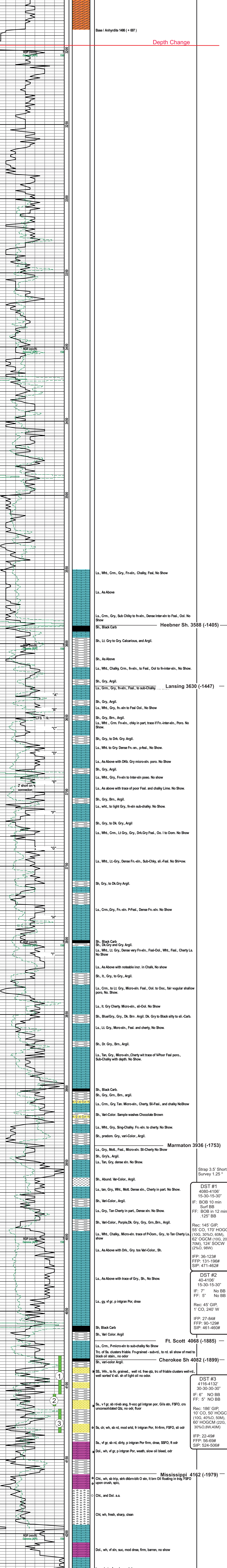
Formation	Sample Tops	E-Log Tops	Strat Pos.
B/ Anhy	1451 (+732)	1451 (+732)	
Hebner Sh.	3588 (-1405)	3586 (-1403)	
Lansing	3630 (-1447)	3624 (-1441)	
Martinton	3936 (-1753)	3936 (-1753)	
Palmer	3996 (-1813)	3992 (-1809)	
Cherokee Sh.	4082 (-1899)	4082 (-1899)	
Mississippi	4162 (-1979)	4158 (-1975)	



REMARKS **Based on sample, DST, and Log Analysis, The Wonder Mud #14-1 will be further evaluated through 5.5' production casing.**

Respectfully Submitted,

Sean P. Deenihan



DST #1  
4080-4106'  
15-30-15-30"  
IF: BOB 10 min  
Surf BB  
FF: BOB in 12 min  
.125" BB

Rec: 145' GIP,  
55' CO, 170' HOGCM  
(10G, 30%O, 60M),  
62' OGCM (10G, 20%O  
70M), 124' SOCW  
(2%O, 98W)

IFP: 36-123#  
FFP: 131-196#  
SIP: 471-462#

DST #2  
40-4106'  
15-30-15-30"  
IF: 7" No BB  
FF: 5" No BB

Rec: 45' GIP,  
1' CO, 240' W

IFP: 27-84#  
FFP: 90-129#  
SIP: 461-460#

DST #3  
4116-4132'  
30-30-30-30"  
IF: 6" NO BB  
FF: 5" NO BB

Rec: 186' GIP,  
10' CO, 50' HOGCM  
(10G, 40%O, 50M),  
60' HOGCM (22G,  
30%O, 8W, 40M)

IFP: 22-49#  
FFP: 56-69#  
SIP: 524-506#

Strap 3.5' Short Survey 1.25"