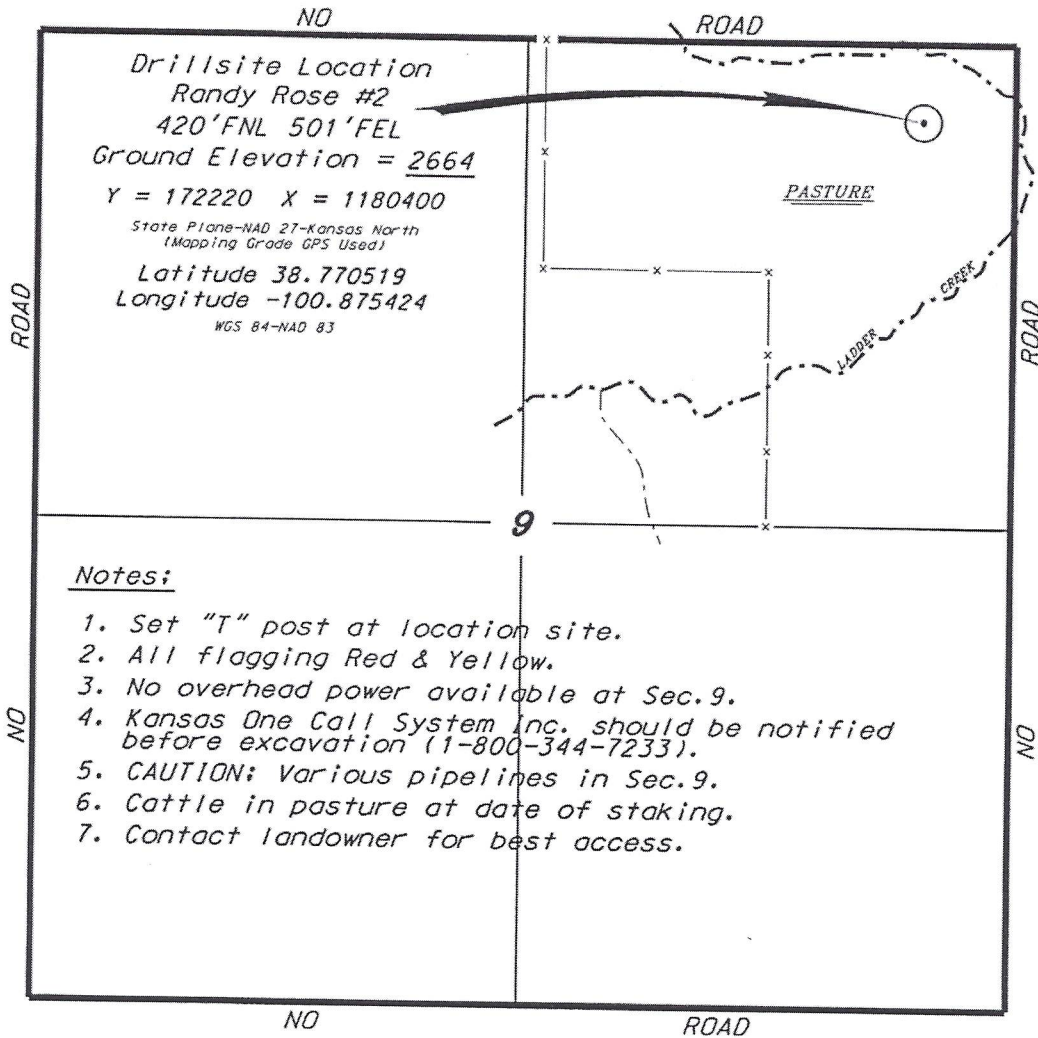


PROLIFIC RESOURCES, LLC  
 RANDY ROSE LEASE  
 NE. 1/4, SECTION 9, T15S, R32W  
 LOGAN COUNTY, KANSAS

RANDY ROSE #1  
 2692

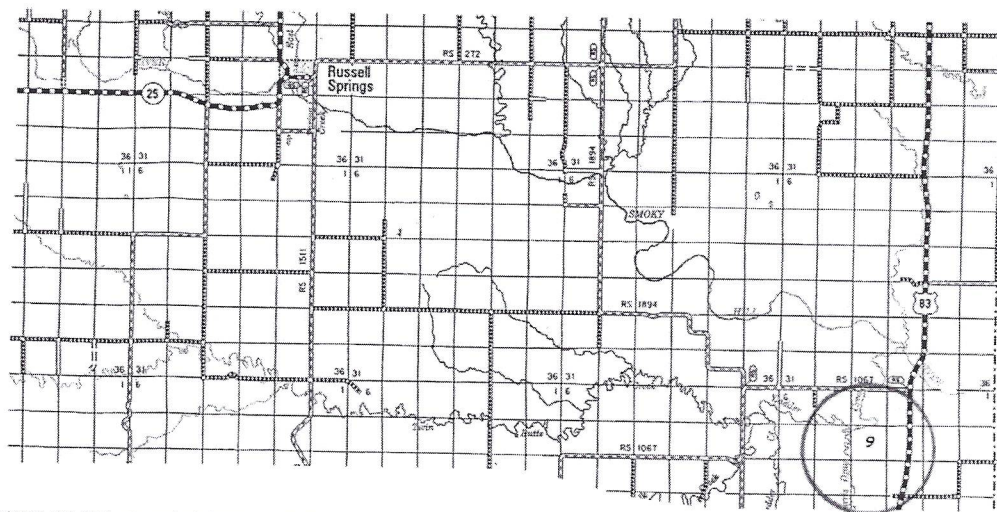


Drillsite Location  
 Randy Rose #2  
 420' FNL 501' FEL  
 Ground Elevation = 2664  
 Y = 172220 X = 1180400  
 State Plane-NAD 27-Kansas North  
 (Mapping Grade GPS Used)  
 Latitude 38.770519  
 Longitude -100.875424  
 WGS 84-NAD 83

**Notes:**

1. Set "T" post at location site.
2. All flagging Red & Yellow.
3. No overhead power available at Sec.9.
4. Kansas One Call System Inc. should be notified before excavation (1-800-344-7233).
5. CAUTION: Various pipelines in Sec.9.
6. Cattle in pasture at date of staking.
7. Contact landowner for best access.

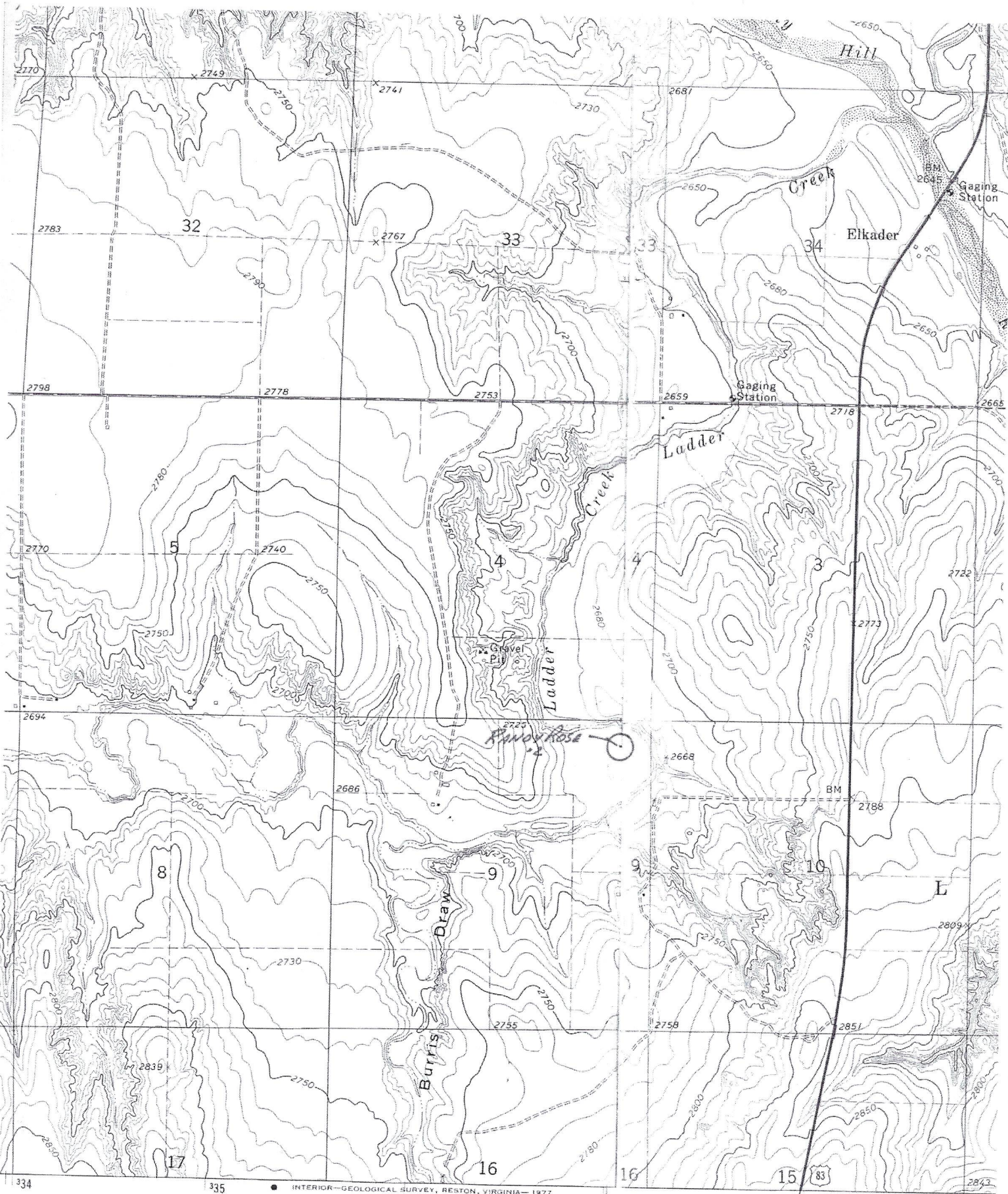
\*Ingress and egress to location as shown on this plat is per usage only and may not be legally opened for public use. Contact landowner, tenant and county road department for access.



\* Controlling data is based upon the best maps and photographs available to us and upon a regular section of land containing 640 acres.  
 \* Approximate section lines were determined using the normal standard of care of oilfield surveyors practicing in the state of Kansas. The section corners, which establish the precise section lines, were not necessarily located, and the exact location of the drillsite location in the section is not guaranteed. Therefore, the operator securing this service and accepting this plat and all other parties relying thereon agree to hold Central Kansas Oilfield Services, Inc., its officers and employees harmless from all losses, costs and expenses and said entities released from any liability from incidental or consequential damages.  
 \* Elevations derived from National Geodetic Vertical Datum.

Date August 1, 2016

CENTRAL KANSAS OILFIELD SERVICES, INC. (620)792-1977



● INTERIOR—GEOLOGICAL SURVEY, RESTON, VIRGINIA—1977  
336000m E

100°51'230"

11 MI. TO KANS. 4  
SCOTT CITY 19 MI.

**ROAD CLASSIFICATION**

- Primary highway, hard surface
- Secondary highway, hard surface
- Light-duty road, hard or improved surface
- Unimproved road

Mapped, edited, and published by the Geological Survey in cooperation with State of Kansas agencies  
Control by USGS and NOS/NOAA  
Topography by photogrammetric methods from aerial photographs taken 1973. Field checked 1974