

KIM B. SHOEMAKER

CONSULTING GEOLOGIST

316-584-9709 * WICHITA, KS

GEOLOGIST'S REPORT

DRILLING TIME AND SAMPLE LOG

COMPANY L. D. DRILLING, INC.

LEASE #1-16 WAILES FARMS INC.

FIELD WILDCAT

LOCATION 663' FNL 1/4 2121' FEL

SFC 16 TWP 5s RGE 37w

COUNTY CHEYENNE STATE KANSAS

CONTRACTOR L. D. DRILLING, INC.

SPUD 5-25-16 COMP 6-16-16

RTD 5057 LTD 5042

MUD LUP 3567 TYPE MUD CHEMICAL

ELEVATIONS
 KB 3420
 DF
 GL 3415
 Measurements Are All From 3420 KB
 CASING
 SURFACE 8 5/8" @ 421'
 PRODUCTION 5 1/2" @
 ELECTRICAL SURVEYS
 DUAL IND, DENS-N, MICRO

SAMPLES SAVED FROM 3800 TO 5057

DRILLING TIME KEPT FROM 3700 TO 5057

SAMPLES EXAMINED FROM 3800 TO 5057

GEOLOGICAL SUPERVISION FROM 3900 TO 5057

GEOLOGIST ON WELL KIM B. SHOEMAKER

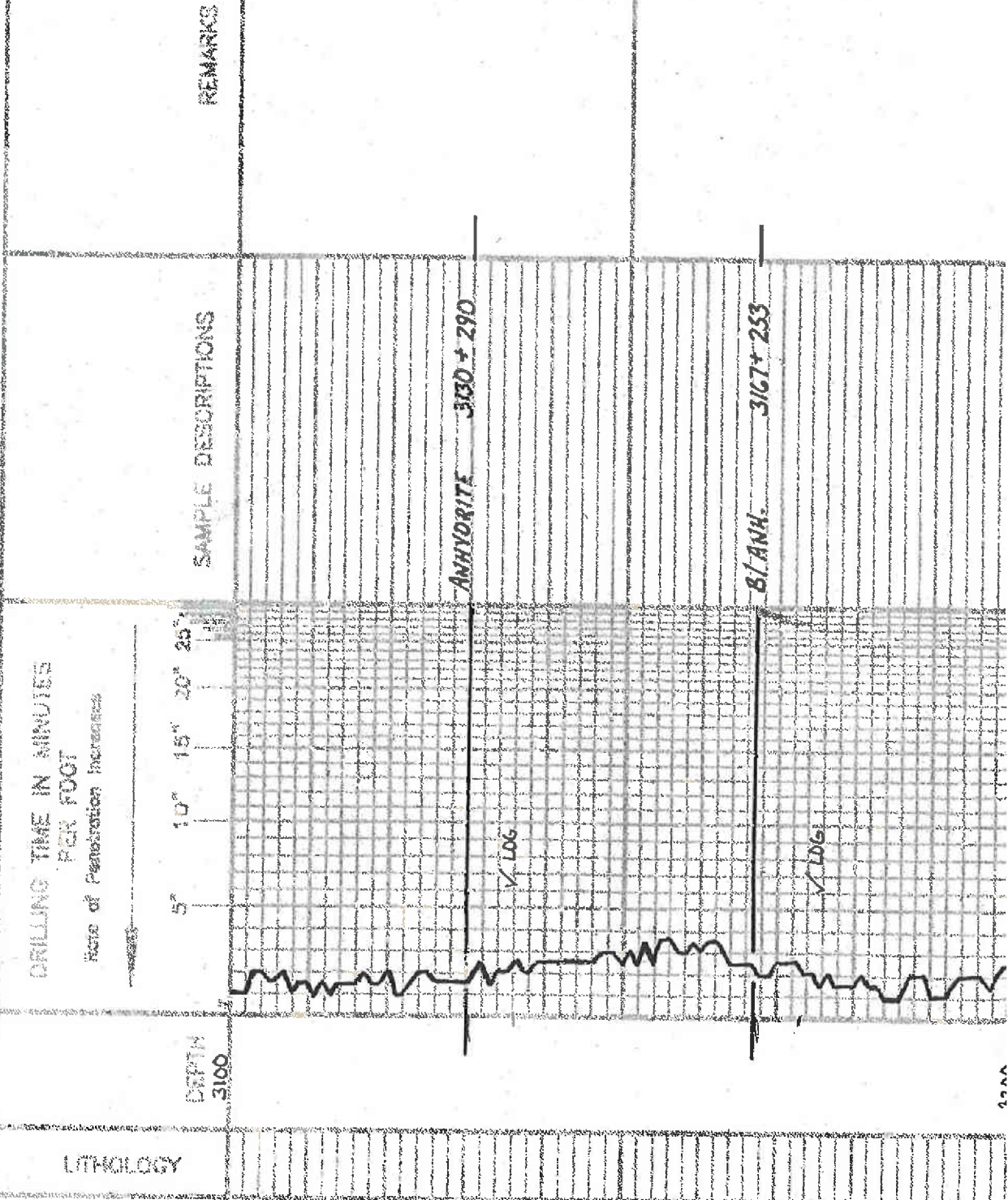
FORMATION TOPS	LOG	SAMPLES
ANHYDRITE	3136+284	3130+290
B/ANH.	376+244	3167+253
STOTLER	3991-577	3974-554
HEEBNER	4250-830	4252-832
LANSING	4300-880	4301-881
B/KC	4562-1142	4558-1133
PAWNEE	4684-1264	4680-1260
FORT SCOTT	4744-1324	4730-1310
CHEROKEE	4771-1351	4756-1336
MISSISSIPPI	4975-1555	4963-1543



REMARKS
 5-25-16 SPUD
 DOWN STORMY PASSING AWAY OF LD DAVIS 5-27-16
 API: 15-023-21450
 6-8 @ 1120'
 6-9 @ 220'
 6-10 @ 3195'
 6-11 @ 3790'
 6-12 @ 5315'
 6-13 @ 4500'
 6-14 @ 4709'
 6-15 @ 4830'
 6-16 @ 5057'

LEGEND

- Anhydrite
- Salt
- Sandstone
- Shale
- Coal
- Limestone
- Coal/Lime
- Chert
- Dolomite

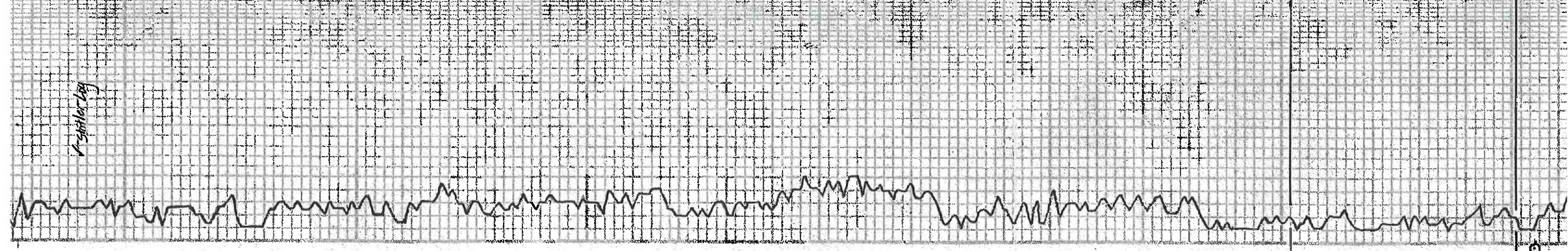


LITHOLOGY

SAMPLE DESCRIPTIONS

REMARKS

45. 7. 2001. 852
 51. 21. 814
 45. wt. Foss. Glauco. w/ BLE. Tryp. sh.
 45. Fr. wt. Earth. Sec. Du. mite
 51. 21. 814
 45. Fr. wt. Sil. Foss.
 45. wt. Sil. Foss. w/ DU. BLE. S. sh.
 51. 21. 814
 45. 21. 814. vsi. Foss. vsi. Chly
 45. wt. Sil. Foss. S. A
 45. wt. Foss. Sil. Calcif.
 45. wt. Sil. Foss. Sil. Calcif. vsi. Chly
 51. 21. 814
 45.
 51. 21. 814
 45. wt. vsi. Foss. Sil. S. sh. B.
 45. wt. Sil. Foss. Sil. Calcif.
 51. 21. 814
 45. wt. Foss. E. p. R. sp. sil. No. d.
 45. wt. Foss. 4252-832
 51. 21. 814
 45. wt. Foss. 4252-832
 51. 21. 814
 45. wt. Foss. Sil. Calcif. vsi. Chly
 45. wt. Sil. Foss. S. A
 51. 21. 814
 45. wt. Foss. Sil. Calcif. vsi. Chly



4000

4100

4200

4300



VIS: 48
WT: 50
WL: B, B
CWL: 2000

DST
MUNCIE CREEK
4416-396
V 106

STARK 4499
V 106
VIS: 57
WT: 54
WL: 96
CWL: 2000

V 106

4400

4500

4600

15. Th. wt. sh. Pass. Sh. A

Sh. RL

15. wt. fossiliferous sh.

Sh. RL Silty

15. To top of fossiliferous sh. No fossils

15. G. Silty A

15. To top of sh. Pass. Sh. Caliche

15. wt. fossiliferous sh. P. P. sh. No fossils

Sh. RL

15. To top of sh. Chilly

Sh. RL

15. G. Silty sh.

Sh. RL

15. wt. sh. Pass. sh. P. P. sh. No fossils

Sh. RL

DST (1) 4414-4500

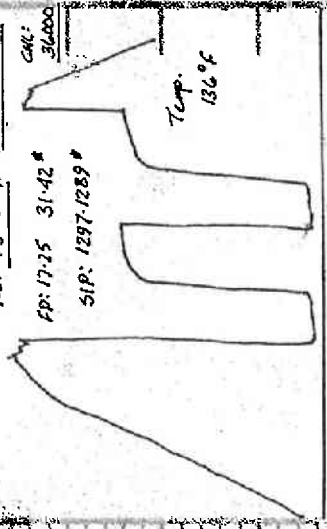
1st OPEN: Blow built to 3/4"
2nd OPEN: Surface Blw w

30-30-30-30

Rec. 75' SMW (157A.85/100)

FP: 17-25 31-42"

SIP: 1297-1289"



Sh. RL - Blue

Sh. RL - G

15. wt. sh. Pass. sh. P. P. sh. No fossils

15. wt. sh. Pass. sh. P. P. sh. No fossils

Sh. RL - Blue

Sh. RL

15. wt. G. sh. Pass. sh. Caliche

15. G. Silty sh.

Sh. RL

Sh. RL
DST (1) 4553-7133

15. wt. sh. Pass. sh. Caliche

Sh. RL

15. wt. sh. Pass. sh. P. P. sh. No fossils

Sh. RL

15. wt. sh. Pass. sh. A

15. Silty sh.

Sh. RL Silty

15. wt. Pass. sh.

Sh. RL Silty

MISSISSIPPI 7163-1590
Shelby Co. Poplar Hill

15. mt. Foss. Caliche

Red. Th. Wash. S. m.

Red. Th. Wash. 186. Foss.

Red. Gr. De. y. Earth. Chert. S. m.

Red. Gr. De. y. Earth. S. m.

4. m.

Red. Gr. De. y. Earth. S. m. Foss. De. y. S. m.

✓ LOG

5000

RTD: 5057-1637

0

