



**TRILOBITE TESTING, INC**

# DRILL STEM TEST REPORT

Fossil Resources, LLC

**33 12s 36w Logan, Ks**

11 W 36th St.  
Hays, Ks 67601

**Nelson #2**

Job Ticket: 65528

**DST#: 1**

ATTN: Lyle Herrman

Test Start: 2016.06.19 @ 21:36:00

## GENERAL INFORMATION:

Formation: **LKC - C**

Deviated: No Whipstock: ft (KB)

Time Tool Opened: 23:34:00

Time Test Ended: 05:20:30

Test Type: Conventional Bottom Hole (Initial)

Tester: Bradley Walter

Unit No: 78

**Interval: 3886.00 ft (KB) To 3910.00 ft (KB) (TVD)**

Reference Elevations: 3071.00 ft (KB)

Total Depth: 3910.00 ft (KB) (TVD)

3063.00 ft (CF)

Hole Diameter: 7.88 inches Hole Condition: Good

KB to GR/CF: 8.00 ft

**Serial #: 8845 Outside**

Press@RunDepth: 202.01 psig @ 3887.00 ft (KB)

Capacity: 8000.00 psig

Start Date: 2016.06.19

End Date: 2016.06.20

Last Calib.: 2016.06.20

Start Time: 21:36:05

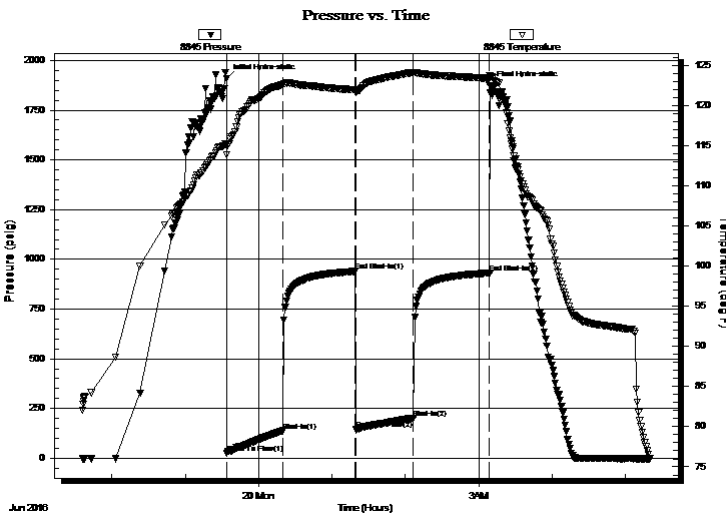
End Time: 05:20:29

Time On Btm: 2016.06.19 @ 23:33:45

Time Off Btm: 2016.06.20 @ 03:09:00

TEST COMMENT: IF: 4 1/2" blow .  
IS: No return.  
FF: 4 " blow .  
FS: No return.

## PRESSURE SUMMARY



Time (Min.)	Pressure (psig)	Temp (deg F)	Annotation
0	1910.29	115.09	Initial Hydro-static
1	23.85	113.85	Open To Flow (1)
46	137.85	122.55	Shut-In(1)
106	939.42	121.97	End Shut-In(1)
106	143.72	121.57	Open To Flow (2)
153	202.01	124.02	Shut-In(2)
215	931.11	123.31	End Shut-In(2)
216	1874.97	123.73	Final Hydro-static

## Recovery

Length (ft)	Description	Volume (bbl)
400.00	mcw 25m 75w (less than 1% oil)	3.53

## Gas Rates

Choke (inches)	Pressure (psig)	Gas Rate (Mcf/d)



