

KIM B. SHOEMAKER

CONSULTING GEOLOGIST

316-684-9709 * WICHITA, KS

GEOLOGIST'S REPORT

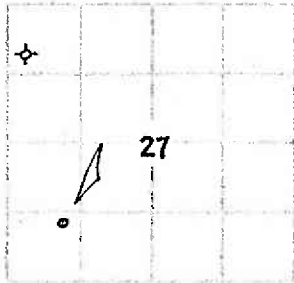
DRILLING TIME AND SAMPLE LOG

COMPANY L. D. DRILLING, INC.
 LEASE * I-27 CAUTION TRUST
 FIELD WILDCAT
 LOCATION 1198' ESL ± 1082' FWL
 SEC 27 TWPSP 16s RGE 32w
 COUNTY SCOT STATE KANSAS
 CONTRACTOR L. D. DRILLING, INC.
 SPUD 6-18-16 COMP 6-30-16
 RTD 4700 LTD 4700
 MUD UR 3500 TYPE MUD CHEMICAL

ELEVATIONS
 KR 2990
 DF _____
 GI 2985
 Measurements Are All
 From 2990 KB
 CASING
 SURFACE 8 5/8" @ 314'
 PRODUCTION 5 1/2" @
 ELECTRICAL SURVEYS
 DUAL IND., DENS-N., MICRO,
 SONIC

SAMPLES SAVED FROM 3560 TO 4700
 DRILLING TIME KEPT FROM 3500 TO 4700
 SAMPLES EXAMINED FROM 3560 TO 4700
 GEOLOGICAL SUPERVISION FROM 3700 TO 4700
 GEOLOGIST ON WELL KIM B. SHOEMAKER

FORMATION TOPS	LOG	SAMPLES
B/ANH.	2383+607	2384+606
STOTLER	3564-574	3564-574
HEEBNER	3946-956	3945-955
LANSING	3988-998	3988-998
STARK	4261-1271	4260-1270
MARMATON	4378-1388	4377-1387
FORT SCOT	4520-1530	4520-1530
CHEROKEE	4547-1557	4547-1557
JOHNSON	4587-1597	4585-1595
MISSISSIPPI	4678-1688	4678-1688



APR 15 171-2169

REMARKS
 6-18-16 SPUD
 6-19 @ 458'
 6-20 @ 2180'
 6-21 @ 3030'
 6-22 @ 3650'
 6-23 @ 4008'
 6-24 @ 4104'
 6-25 @ 4231'
 6-26 @ 4281'
 6-27 @ 4517'
 6-28 @ 4630'
 6-29 @ 4770'

LEGEND

- Dolomite
- G-act
- Oil-Lime
- Limestone
- Calc. sh
- Sandstone
- Silt
- Anhydrite

DRILLING TIME IN MINUTES
 PER FOOT
 Rate of Penetration Increases



SAMPLE DESCRIPTIONS

REMARKS

UPPER ANH. 2384+606

ANHYDRITE 2362+628

B/ANH. 2384+606

LITHOLOGY

2400

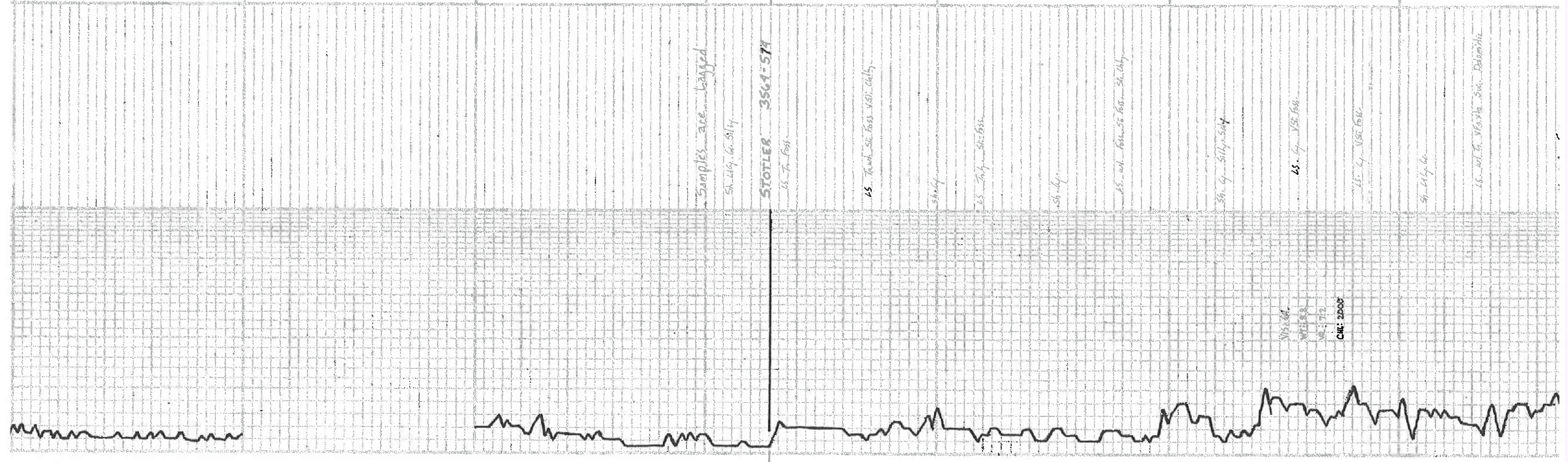
27W

2450

3500

3600

3700



Samples are bagged

Sh. G. Silty

STOTLER 3564-571

Sh. F. Foss.

Sh. F. Foss. Silty Cherty

Sh. G.

Sh. G. Silty Foss.

Sh. G.

Sh. F. Foss. Silty Foss. Sh. Cherty

Sh. G. Silty Sdy

Sh. G. Silty Foss.

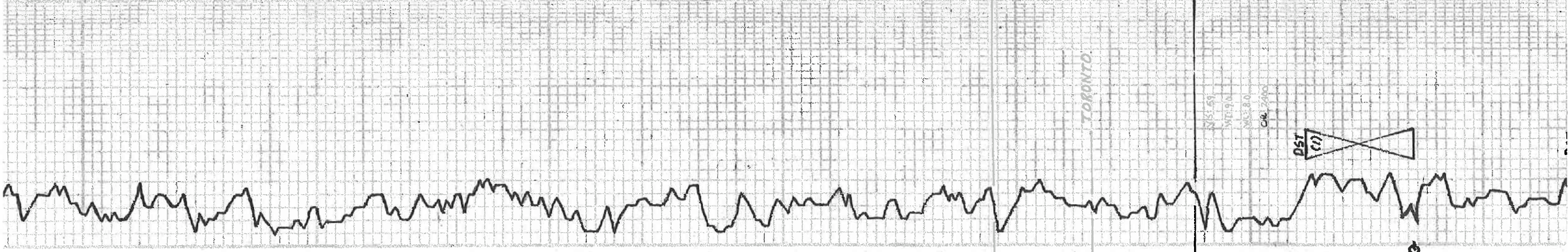
Sh. G. Silty Foss.

Sh. G. Silty

Sh. F. Foss. Silty. Sh. Cherty

WLS 2000
WLS 2000
WLS 2000
CIL: 2000

43. To Exposed Sil. Foss. See Sil. Delamination
 44. To Sil. Foss. Sil. Foss. Sil. Foss.
 45. To Sil. Foss. Sil. Foss. Sil. Foss.
 46. To Sil. Foss. Sil. Foss. Sil. Foss.
 47. To Sil. Foss. Sil. Foss. Sil. Foss.
 48. To Sil. Foss. Sil. Foss. Sil. Foss.
 49. To Sil. Foss. Sil. Foss. Sil. Foss.
 50. To Sil. Foss. Sil. Foss. Sil. Foss.
 51. To Sil. Foss. Sil. Foss. Sil. Foss.
 52. To Sil. Foss. Sil. Foss. Sil. Foss.
 53. To Sil. Foss. Sil. Foss. Sil. Foss.
 54. To Sil. Foss. Sil. Foss. Sil. Foss.
 55. To Sil. Foss. Sil. Foss. Sil. Foss.
 56. To Sil. Foss. Sil. Foss. Sil. Foss.
 57. To Sil. Foss. Sil. Foss. Sil. Foss.
 58. To Sil. Foss. Sil. Foss. Sil. Foss.
 59. To Sil. Foss. Sil. Foss. Sil. Foss.
 60. To Sil. Foss. Sil. Foss. Sil. Foss.
 61. To Sil. Foss. Sil. Foss. Sil. Foss.
 62. To Sil. Foss. Sil. Foss. Sil. Foss.
 63. To Sil. Foss. Sil. Foss. Sil. Foss.
 64. To Sil. Foss. Sil. Foss. Sil. Foss.
 65. To Sil. Foss. Sil. Foss. Sil. Foss.
 66. To Sil. Foss. Sil. Foss. Sil. Foss.
 67. To Sil. Foss. Sil. Foss. Sil. Foss.
 68. To Sil. Foss. Sil. Foss. Sil. Foss.
 69. To Sil. Foss. Sil. Foss. Sil. Foss.
 70. To Sil. Foss. Sil. Foss. Sil. Foss.
 71. To Sil. Foss. Sil. Foss. Sil. Foss.
 72. To Sil. Foss. Sil. Foss. Sil. Foss.
 73. To Sil. Foss. Sil. Foss. Sil. Foss.
 74. To Sil. Foss. Sil. Foss. Sil. Foss.
 75. To Sil. Foss. Sil. Foss. Sil. Foss.
 76. To Sil. Foss. Sil. Foss. Sil. Foss.
 77. To Sil. Foss. Sil. Foss. Sil. Foss.
 78. To Sil. Foss. Sil. Foss. Sil. Foss.
 79. To Sil. Foss. Sil. Foss. Sil. Foss.
 80. To Sil. Foss. Sil. Foss. Sil. Foss.
 81. To Sil. Foss. Sil. Foss. Sil. Foss.
 82. To Sil. Foss. Sil. Foss. Sil. Foss.
 83. To Sil. Foss. Sil. Foss. Sil. Foss.
 84. To Sil. Foss. Sil. Foss. Sil. Foss.
 85. To Sil. Foss. Sil. Foss. Sil. Foss.
 86. To Sil. Foss. Sil. Foss. Sil. Foss.
 87. To Sil. Foss. Sil. Foss. Sil. Foss.
 88. To Sil. Foss. Sil. Foss. Sil. Foss.
 89. To Sil. Foss. Sil. Foss. Sil. Foss.
 90. To Sil. Foss. Sil. Foss. Sil. Foss.
 91. To Sil. Foss. Sil. Foss. Sil. Foss.
 92. To Sil. Foss. Sil. Foss. Sil. Foss.
 93. To Sil. Foss. Sil. Foss. Sil. Foss.
 94. To Sil. Foss. Sil. Foss. Sil. Foss.
 95. To Sil. Foss. Sil. Foss. Sil. Foss.
 96. To Sil. Foss. Sil. Foss. Sil. Foss.
 97. To Sil. Foss. Sil. Foss. Sil. Foss.
 98. To Sil. Foss. Sil. Foss. Sil. Foss.
 99. To Sil. Foss. Sil. Foss. Sil. Foss.
 100. To Sil. Foss. Sil. Foss. Sil. Foss.



3800

3900

4000

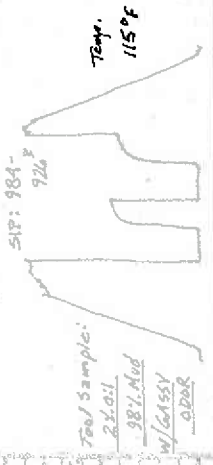
TORONTO

LANSING 3988-998

HEGNER 3915-955

DST (1)

DST (1) 1012-1035

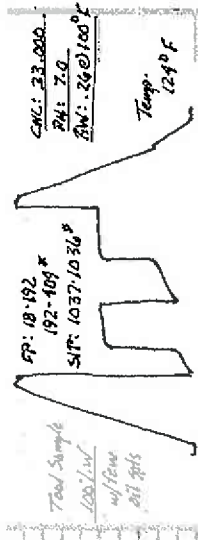


DST (2) 1020-1104

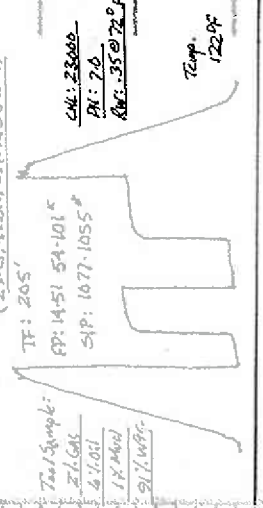
1st OPEN: Bottom bucket 10 min. 88: None 88: "

30. 95. 45. 60

Rec. 184' MW (80' w. 20' d) @ 93' SHAW (90' w. 22' d. Gassy)



DST (3) 4205-4231
88: None
84: "



DST (4) 4258-4278
1500g: Blow built to 4"
2400 LBS " " " 3"
30-45-45-60



STARK 4210-4220

15 caly-y cool. For. P. 2 1/2"
R. Sp. A. S. 1000
Bl. Flour
15 y. cool. For. S. Chy.

MUSHPOCKNEY 4305-4315

15 caly-y cool. V.S.T. Chy.
15. . . 11 y. S. For. Y.S. Chy.

BIKE 4343-4353

15. . . For. For. Galactic
Bl. Silver-Suby

MARMATON 4377-4387

15. . . For. S. For. V.S.A
Sh. Caly. G.
15. . . Yellow. U.S.T. For. V.S.A

SH. B.L.G. B.K.
L.S. . . . Y.S. For.

L.S. . . . Y.S. For.

L.S. . . . For. . .

L.S. . . . For. . .

L.S. . . . For. . .

L.S. . . . For. . .

L.S. . . . For. . .

L.S. . . . For. . .

L.S. . . . For. . .

L.S. . . . For. . .

L.S. . . . For. . .

L.S. . . . For. . .

L.S. . . . For. . .

L.S. . . . For. . .

L.S. . . . For. . .

L.S. . . . For. . .

L.S. . . . For. . .

L.S. . . . For. . .

L.S. . . . For. . .

L.S. . . . For. . .

L.S. . . . For. . .

L.S. . . . For. . .

L.S. . . . For. . .

L.S. . . . For. . .

L.S. . . . For. . .

L.S. . . . For. . .

L.S. . . . For. . .

L.S. . . . For. . .

L.S. . . . For. . .

L.S. . . . For. . .

L.S. . . . For. . .

L.S. . . . For. . .

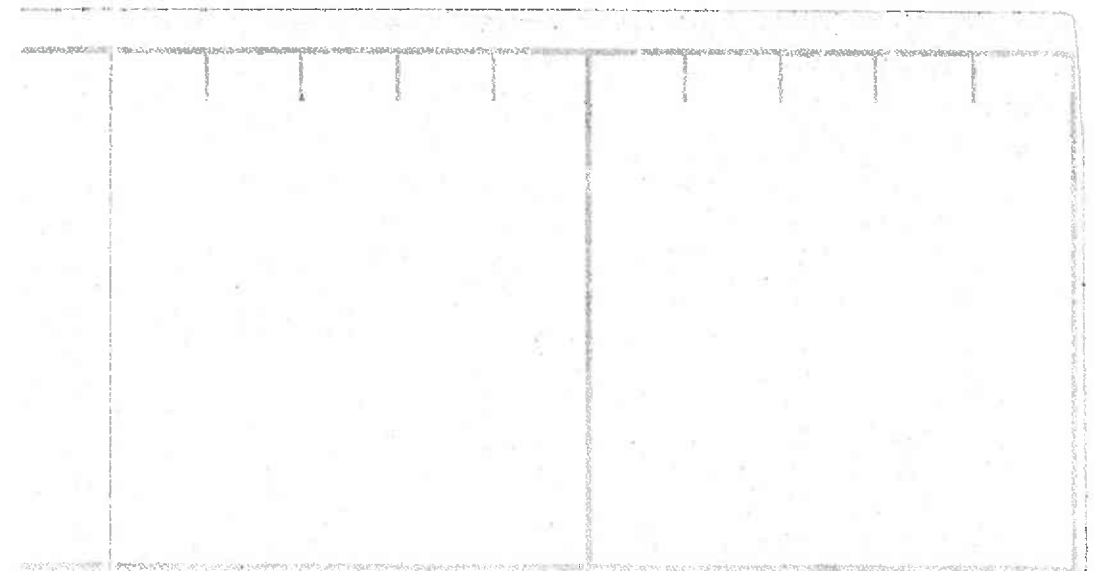
L.S. . . . For. . .

4100

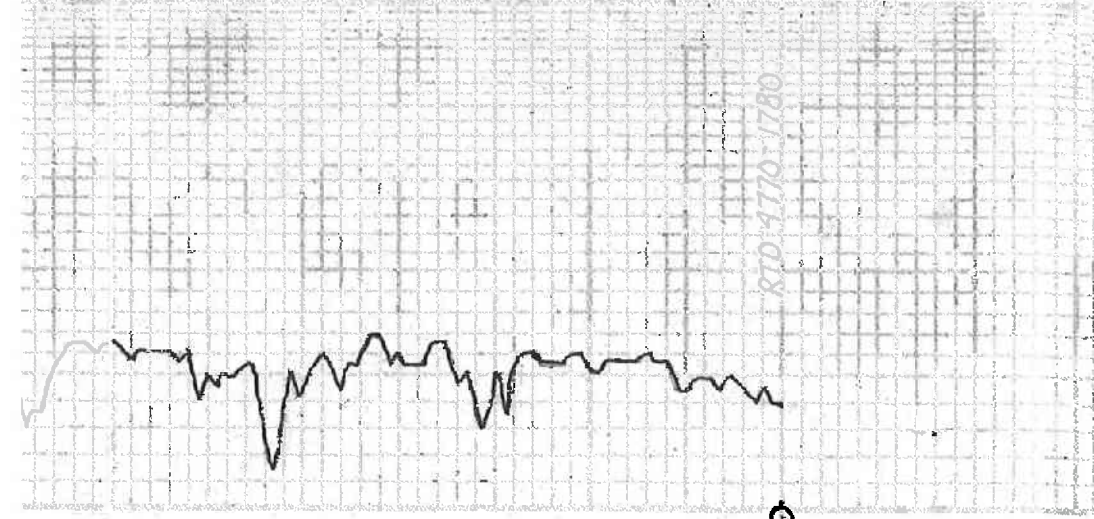
4200

4300

4400



65. 100VCH100, 65 Food, Sh. Chilly
66. Ch. G. To G. Sub. PL St. N. 1000
67. To NOLA 1000 Calcutta
68. Food 1000 Sh. Chilly
69. To NOLA 1000 Calcutta
70. Ch. G. To G. Sub. PL St. N. 1000



RTD 1170-1780

4700

