

Patrick J. Deenihan

GEOLOGIST'S REPORT DRILLING TIME AND SAMPLE LOG

COMPANY **Carmen Schmitt, Inc.**
 LEASE **WP Unit #1-7**
 FIELD **KB 2439'**
 LOCATION **2626' ENL & 1494' FWL**
 SEC **7 TWP 14 S RGE 2 S W**
 COUNTY **Trego STATE Kansas**
 CONTRACTOR **Muirfin Rig #16**
 SPUD **6/8/16 COMP 6/5/16**
 RTD **4:37:51 LTD 4:37:51**
 MUD UP **TYPE MUD Chemical**

ELEVATIONS
KB 2439'
 DF _____
 GL **2434'**
 Measurements Are All From Kelly Bushings

CASING
 CONDUCTOR _____
 SURFACE **8.625" @ 218"**
 PRODUCTION **5.5"**

SAMPLES SAVED FROM **3300'** TO **RTD**
 DRILLING TIME KEPT FROM **3300'** TO **RTD**
 SAMPLES EXAMINED FROM **3300'** TO **RTD**
 GEOLOGICAL SUPERVISION FROM **3300'**

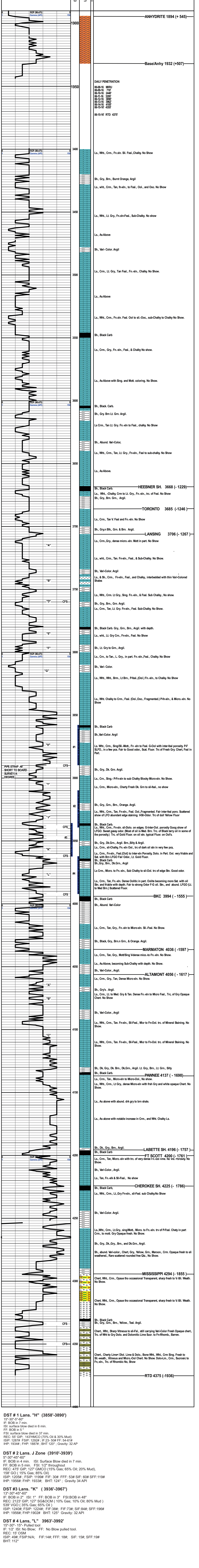
GEOLOGIST _____
 Pioneer Wireline
 DTL, CND, MIC

Formation	Sample Tops	E-log Tops	Struct Pos.
B/ Anhy	1932 (+507)	1930 (+509)	
Hedbur Sh.	3668 (-1229)	3668 (-1229)	
Darsting	3706 (-1267)	3706 (-1267)	
Marmaton	4036 (-1597)	4036 (-1597)	
Pawnee	4137 (-1698)	4137 (-1698)	
Cherokee Sh.	4222 (-1783)	4222 (-1783)	
Mississippi	4294 (-1855)	4294 (-1855)	



REMARKS **Based on sample, DST, and Log Analysis, The WP Unit #1-7 will be further evaluated through 5.5' production casing.**

Respectfully Submitted,
 Patrick Deenihan



DST # 1 Lans. "H" (3858'-3890')
 15"-30"-5"-60"
 IF: BOB in 7 min.
 ISl: surface blow died in 6 min.
 FF: BOB in 5"
 FSI: surface blow died in 37 min.
 REC: 55' GIP; 143'HMCO (70% Oil & 30% Mud)
 ISIP: 1287#; FSIP: 1292#; IF:23- 50# FF: 54-61#
 IHP: 1934#; FHP: 1887#; BHT 120"; Gravity: 32 AP

DST # 2 Lans. J Zone (3910'-3939')
 5"-30"-45"-60"
 IF: BOB in 4 min. ISl: Surface Blow died in 7 min.
 FF: BOB in 5 min. FSI: 1/2" throughout
 REC: 475' GIP; 127' GMCO (15% Gas; 65% Oil; 20% Mud),
 158' GO (15% Gas; 85% Oil)
 ISIP: 1205#; FSIP: 1199# FIF: 30# FFF: 53# SIF: 60# SFF:119#
 IHP: 1956#; FHP: 1933#; BHT: 124" ; Gravity 34 API

DST #3 Lans. "K" (3936'-3967')
 13"-30"-45"-60"
 IF: BOB in 2" ISl: 1" FF: BOB in 3" FSI:BOB in 48"
 REC: 2123' GIP; 127' SG&OCM (10% Gas; 10% Oil; 80% Mud)
 539' VGO (35% Gas; 65% Oil)
 ISIP: 1240#; FSIP: 1224#; FIF:36#; FIF:73#; SIF:84#; SFF:196#
 IHP: 1956#; FHP:1902# BHT: 125" Gravity: 32 API

DST # 4 Lans. "L" 3963'-3992'
 15"-30"- 15"- Pulled tool
 IF: 1/2" ISl: No Blow; FF: No Blow pulled tool.
 REC: 15' OSM
 ISIP: 49#; FSIP:N/A; FIF:14#; FFF: 18#; SIF: 15#; SFF:19#
 BHT: 112"