



TRILOBITE TESTING, INC.

DRILL STEM TEST REPORT

Shakespeare Oil Company

21-16s-34w Scott Co KS

202 West Main St
Salem IL
62881
ATTN: Tim Priest

Edwards 1 21

Job Ticket: 64596

DST#: 4

Test Start: 2016.08.03 @ 19:44:15

GENERAL INFORMATION:

Formation: **Marmaton C**

Deviated: No Whipstock: ft (KB)

Time Tool Opened: 21:59:00

Time Test Ended: 02:54:00

Test Type: Conventional Bottom Hole (Reset)

Tester: Mike Roberts

Unit No: 81

Interval: 4500.00 ft (KB) To 4545.00 ft (KB) (TVD)

Reference Elevations: 3140.00 ft (KB)

Total Depth: 4545.00 ft (KB) (TVD)

3132.00 ft (CF)

Hole Diameter: 7.88 inches Hole Condition: Fair

KB to GR/CF: 8.00 ft

Serial #: 8737 Outside

Press@RunDepth: 47.31 psig @ 4507.00 ft (KB)

Capacity: 8000.00 psig

Start Date: 2016.08.03

End Date:

2016.08.04

Last Calib.:

2016.08.04

Start Time: 19:44:15

End Time:

02:54:00

Time On Btm:

2016.08.03 @ 21:56:45

Time Off Btm:

2016.08.04 @ 00:57:15

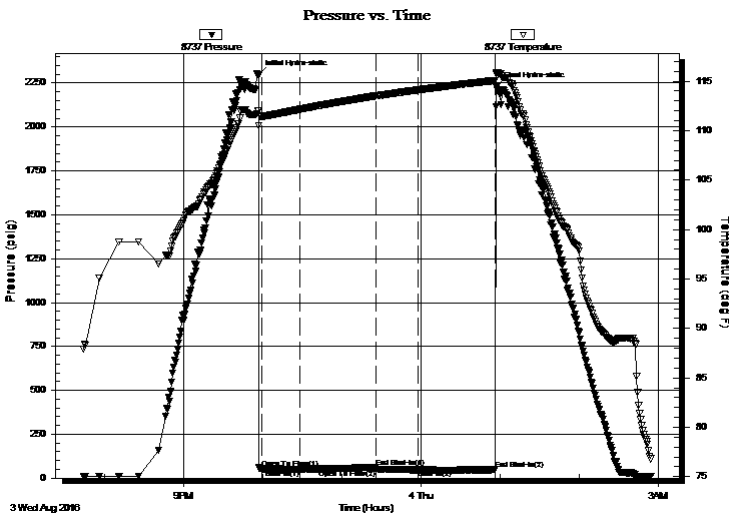
TEST COMMENT: IF:Weak surface blow died in 10 min.

IS:No return blow

FF:No blow

FS:No return blow

PRESSURE SUMMARY



Time (Min.)	Pressure (psig)	Temp (deg F)	Annotation
0	2296.42	112.01	Initial Hydro-static
3	53.98	111.45	Open To Flow (1)
32	51.70	112.15	Shut-In(1)
89	62.53	113.51	End Shut-In(1)
90	52.38	113.51	Open To Flow (2)
122	47.31	114.12	Shut-In(2)
180	48.43	115.07	End Shut-In(2)
181	2229.40	115.89	Final Hydro-static

Recovery

Length (ft)	Description	Volume (bbl)
15.00	mud w ith oil spots 100%m	0.21

* Recovery from multiple tests

Gas Rates

Choke (inches)	Pressure (psig)	Gas Rate (Mcf/d)



**TRILLOBITE
TESTING, INC**

DRILL STEM TEST REPORT

Shakespeare Oil Company

21-16s-34w Scott Co KS

202 West Main St
Salem IL
62881
ATTN: Tim Priest

Edwards 1 21

Job Ticket: 64596

DST#: 4

Test Start: 2016.08.03 @ 19:44:15

GENERAL INFORMATION:

Formation: **Marmaton C**

Deviated: No Whipstock: ft (KB)

Time Tool Opened: 21:59:00

Time Test Ended: 02:54:00

Test Type: Conventional Bottom Hole (Reset)

Tester: Mike Roberts

Unit No: 81

Interval: 4500.00 ft (KB) To 4545.00 ft (KB) (TVD)

Reference Elevations: 3140.00 ft (KB)

Total Depth: 4545.00 ft (KB) (TVD)

3132.00 ft (CF)

Hole Diameter: 7.88 inches Hole Condition: Fair

KB to GR/CF: 8.00 ft

Serial #: 8646 Inside

Press@RunDepth: psig @ 4507.00 ft (KB)

Capacity: 8000.00 psig

Start Date: 2016.08.03

End Date: 2016.08.04

Last Calib.: 2016.08.04

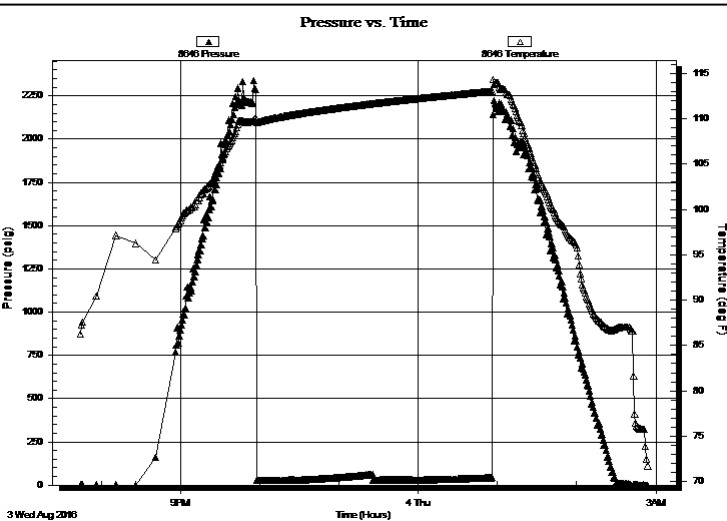
Start Time: 19:44:15

End Time: 02:54:00

Time On Btm:

Time Off Btm:

TEST COMMENT: IF:Weak surface blow died in 10 min.
IS:No return blow
FF:No blow
FS:No return blow



PRESSURE SUMMARY

Time (Min.)	Pressure (psig)	Temp (deg F)	Annotation

Recovery

Length (ft)	Description	Volume (bbl)
15.00	mud w ith oil spots 100%m	0.21

Gas Rates

	Choke (inches)	Pressure (psig)	Gas Rate (Mcf/d)

* Recovery from multiple tests



**TRILOBITE
TESTING, INC**

DRILL STEM TEST REPORT

FLUID SUMMARY

Shakespeare Oil Company

21-16s-34w Scott Co KS

202 West Main St
Salem IL
62881
ATTN: Tim Priest

Edwards 1 21

Job Ticket: 64596

DST#: 4

Test Start: 2016.08.03 @ 19:44:15

Mud and Cushion Information

Mud Type: Gel Chem

Cushion Type:

Oil API:

0 deg API

Mud Weight: 9.00 lb/gal

Cushion Length:

ft

Water Salinity:

0 ppm

Viscosity: 48.00 sec/qt

Cushion Volume:

bbf

Water Loss: 10.37 in³

Gas Cushion Type:

Resistivity: 0.00 ohm.m

Gas Cushion Pressure:

psig

Salinity: 7200.00 ppm

Filter Cake: 1.00 inches

Recovery Information

Recovery Table

Length ft	Description	Volume bbf
15.00	mud w ith oil spots 100%m	0.210

Total Length: 15.00 ft Total Volume: 0.210 bbf

Num Fluid Samples: 0

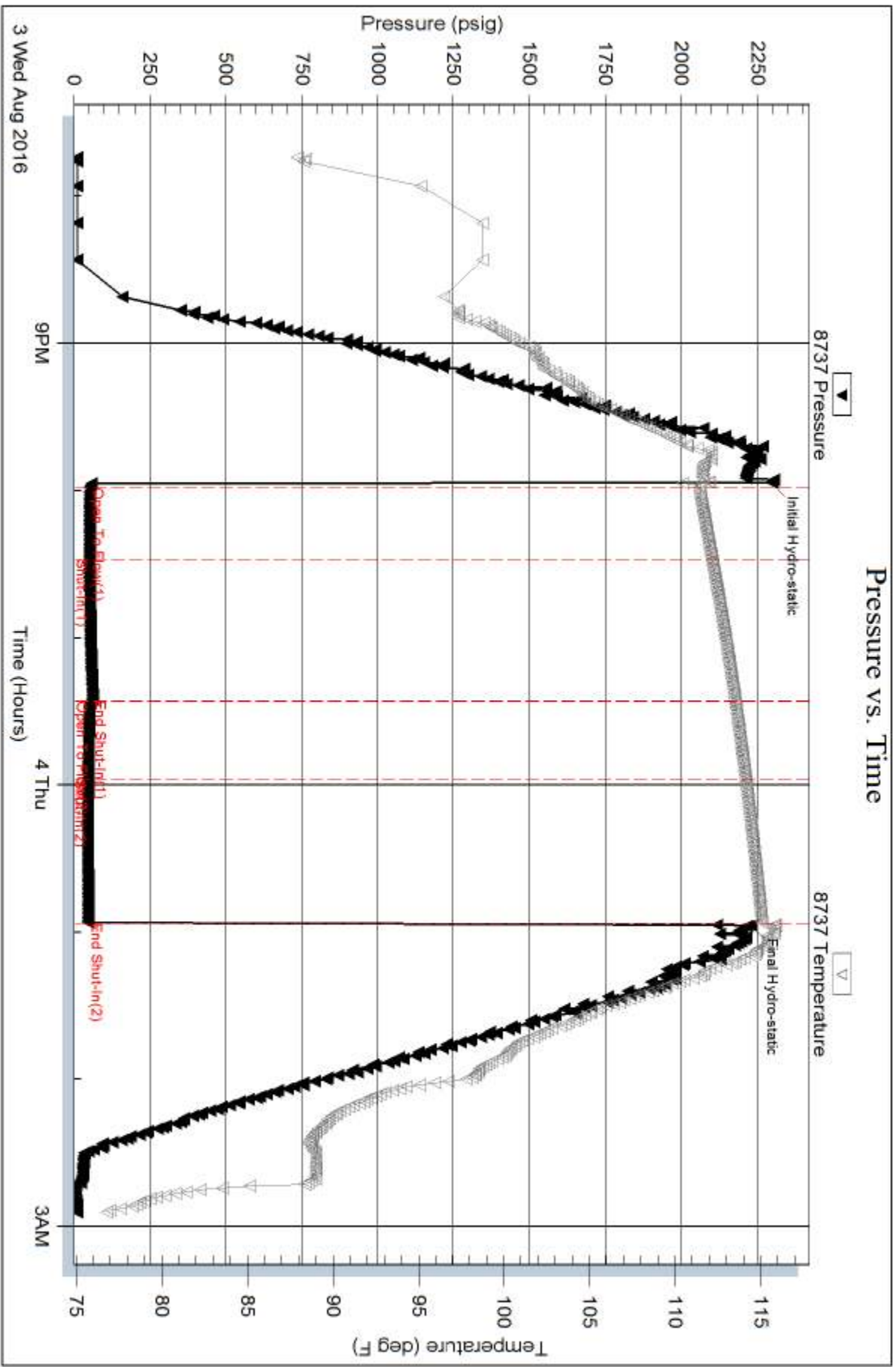
Num Gas Bombs: 0

Serial #:

Laboratory Name:

Laboratory Location:

Recovery Comments:



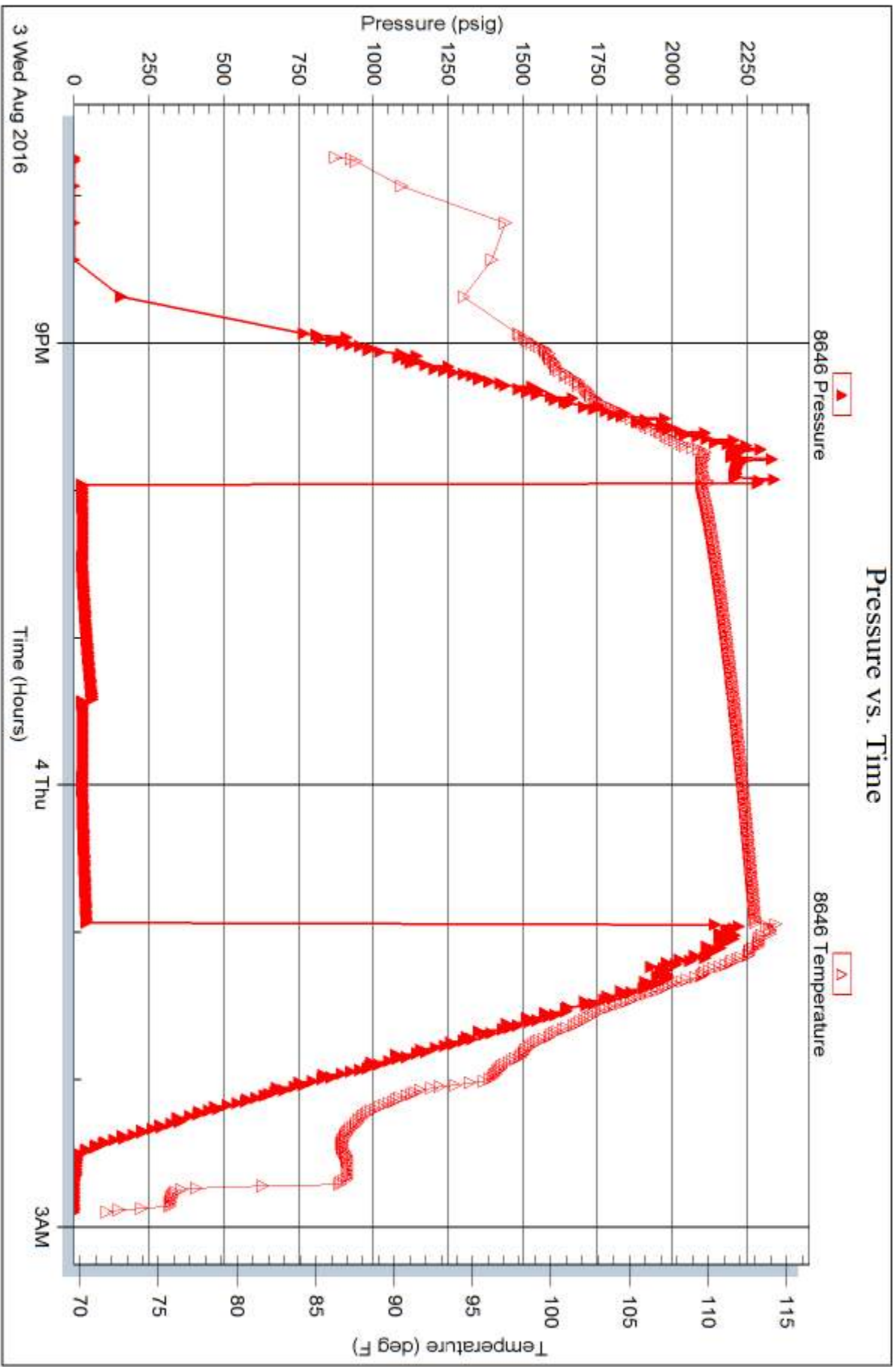
Serial #: 8646

Inside

Shakespeare Oil Company

Edwards 1 21

DST Test Number: 4



Trilobite Testing, Inc

Ref. No: 64596

Printed: 2016.08.04 @ 08:04:22