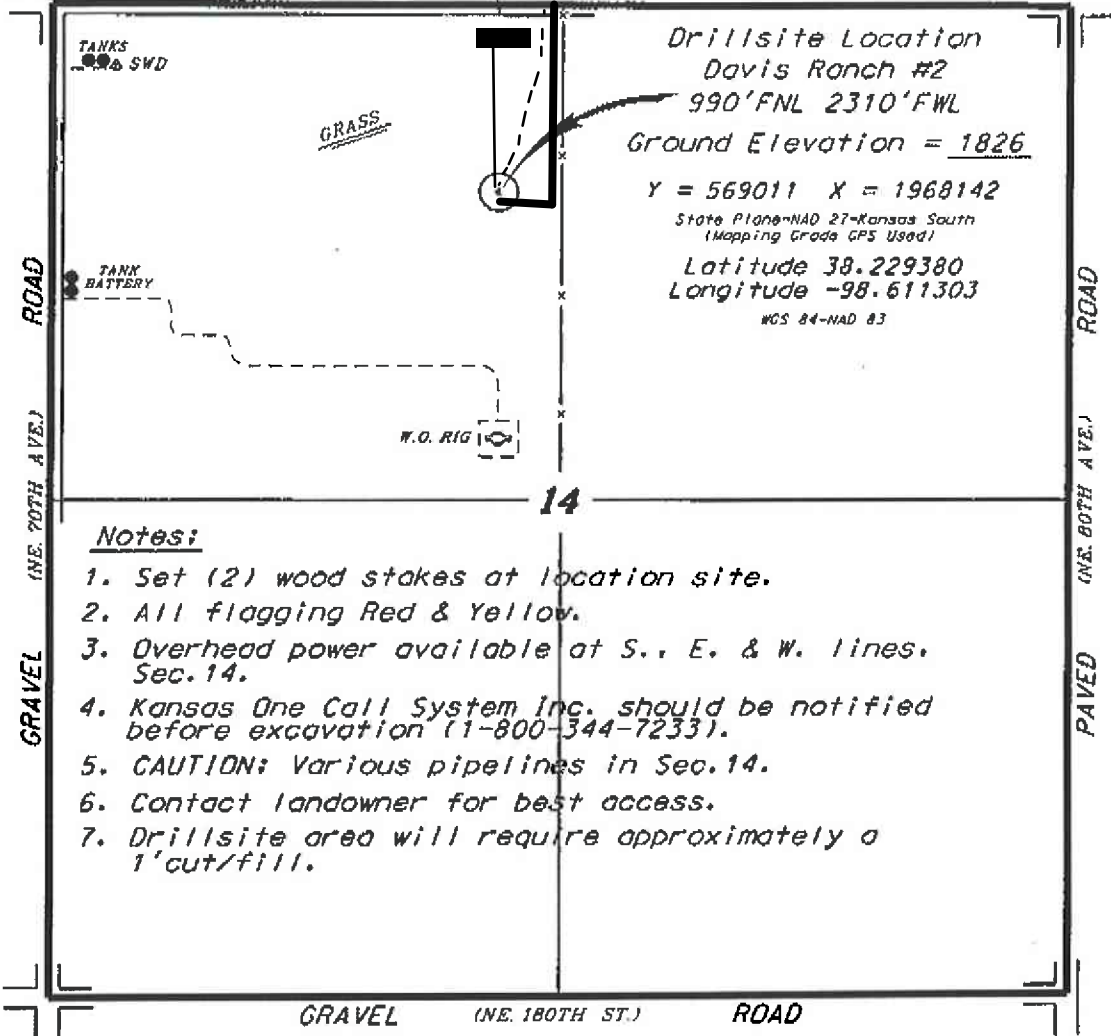


**L.D. DRILLING, INC.**  
**DAVIS RANCH LEASE**  
 NW. 1/4, SECTION 14, T21S, R12W  
 STAFFORD COUNTY, KANSAS

**Directions:**

From the intersection of Highway 281 and Highway K-19, go 5.0 miles North on Highway 281, then go 7.0 miles East on a county road to the NW corner of Section 14, then go 0.43 miles East, then go 0.18 miles South to location.

FLAGGED ROAD OPPOSITE LOC.  
 GRAVEL (NE. 190TH ST.) ROAD



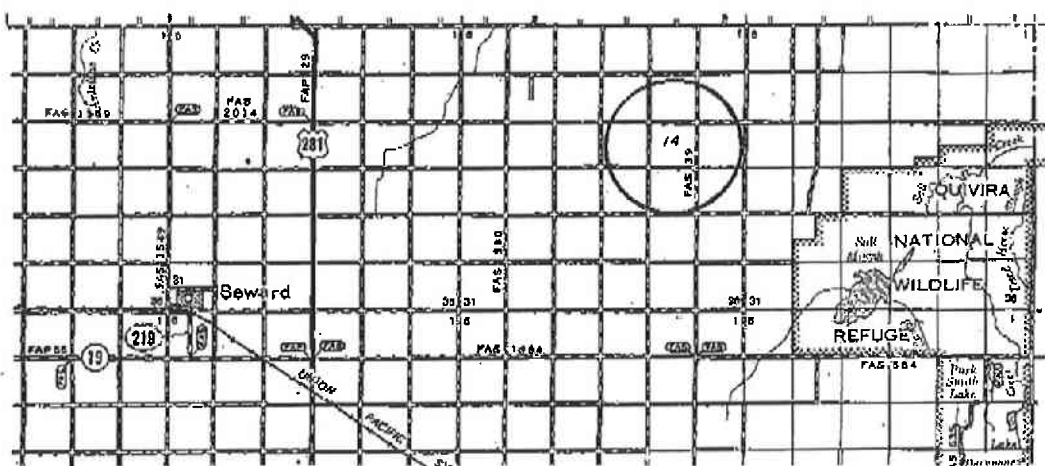
**Drillsite Location**  
 Davis Ranch #2  
 990'FNL 2310'FWL  
 Ground Elevation = 1826  
 Y = 569011 X = 1968142  
 State Plane-NAD 27-Kansas South  
 (Mapping Grade GPS Used)  
 Latitude 38.229380  
 Longitude -98.611303  
 NGS 84-NAD 83



**Notes:**

1. Set (2) wood stakes at location site.
2. All flagging Red & Yellow.
3. Overhead power available at S., E. & W. lines. Sec.14.
4. Kansas One Call System Inc. should be notified before excavation (1-800-344-7233).
5. CAUTION: Various pipelines in Sec.14.
6. Contact landowner for best access.
7. Drillsite area will require approximately a 1'cut/fill.

\*Ingress and egress to location as shown on this plot is per usage only and may not be legally opened for public use. Contact landowner, tenant and county road department for access.



• Controlling data is based upon the best maps and photographs available to us and upon a regular section of land containing 640 acres.  
 • Approximate section lines were determined using the normal standard of care of oilfield surveyors practicing in the state of Kansas. The section corners, which establish the precise section lines, were not necessarily located, and the exact location of the drillsite location in the section is not guaranteed. Therefore, the operator securing this service and accepting this plot and all other parties relying thereon agree to hold Central Kansas Oilfield Services, Inc., its officers and employees harmless from all losses, costs and expenses and said entities released from any liability from incidental or consequential damages.  
 • Elevations derived from National Geodetic Vertical Datum.

Date August 15, 2016