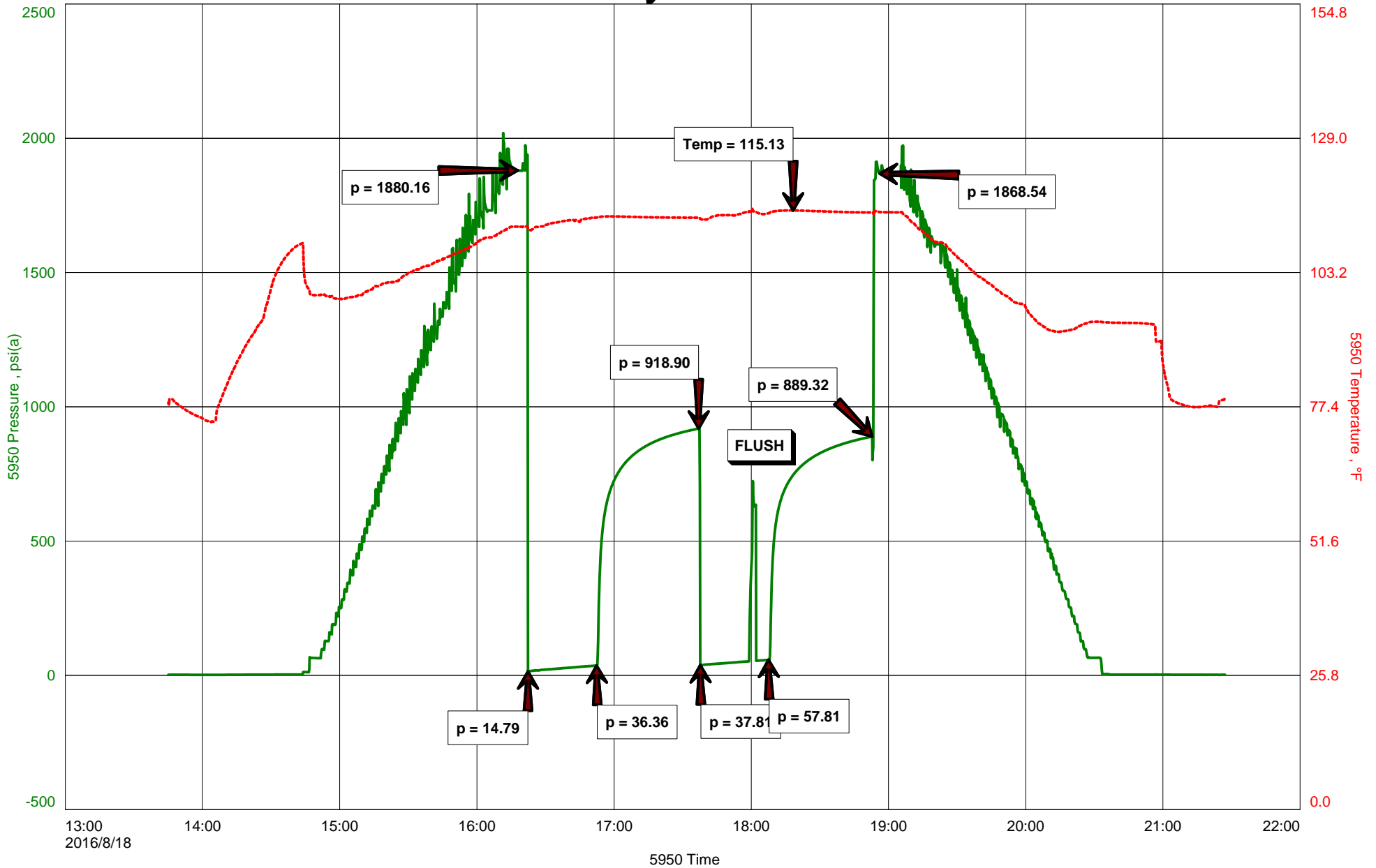


Randy Rose #2





Hoisington, Kansas

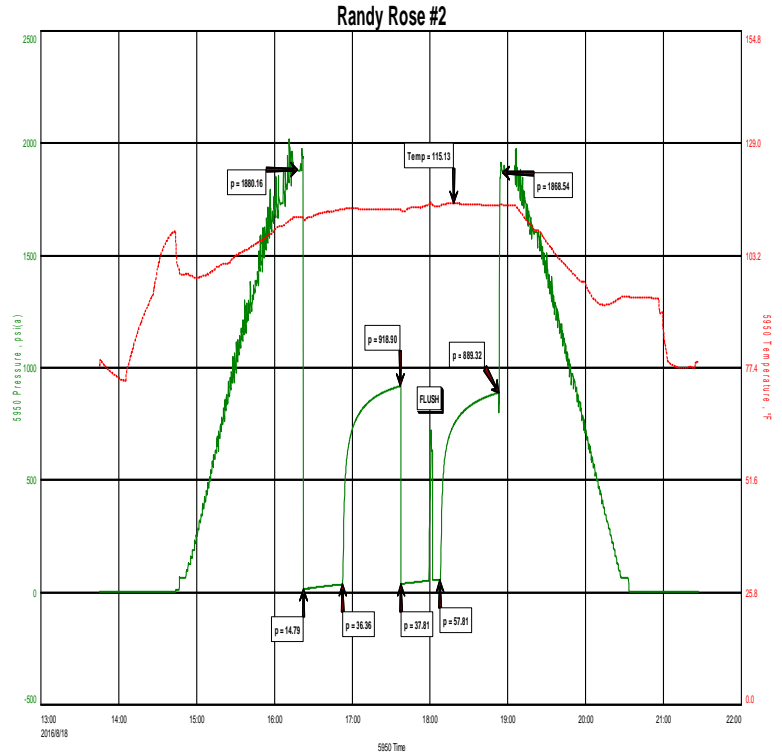
Michael Carroll
620-617-0368
carroll.dtlc@gmail.com

General Information

Company Name Prolific Resources LLC

Contact Darrell Willinger
Well Name Randy Rose #2
Unique Well ID Dst #3 Lans/KC 'K' 3905-3940'
Surface Location Sec 9-15s-32w Logan County
Field Corrine South
Well Type Vertical
Test Type Drill Stem Test
Well Operator Prolific Resources LLC

Formation Dst #3 Lans/KC 'K' 3905-3940'
Well Fluid Type 01 Oil
Test Purpose Initial Test
Start Test Date 2016/08/18
Start Test Time 13:45:00
Final Test Time 21:27:00
Job Number P0123
Report Date 2016/08/18
Prepared By Michael Carroll



TEST RECOVERY

Remarks Recovery: 65' Mud 100%M

Total fluid: 65'

Tool Sample: 9%W 91%M With A Light Scum Of Oil



DIAMOND TESTING
P.O. Box 157
HOISINGTON, KANSAS 67544
(800) 542-7313
DRILL-STEM TEST TICKET
FILE: RANDYROSE#2DST3

TIME ON: 1345
TIME OFF: 2127

Company PROLIFIC RESOURCES LLC Lease & Well No. RANDY ROSE #2
Contractor WW DRLG RIG 14 Charge to PROLIFIC RESOURCES LLC
Elevation 2675KB Formation LANS/KC 'K' Effective Pay _____ Ft. Ticket No. P0123
Date 8-18-16 Sec. 9 Twp. _____ 15 S Range _____ 32 W County LOGAN State KANSAS
Test Approved By JEFF BURK Diamond Representative Michael Carroll

Formation Test No. 3 Interval Tested from 3905 ft. to 3940 ft. Total Depth 3940 ft.
Packer Depth 3900 ft. Size 6 3/4 in. Packer depth _____ ft. Size 6 3/4 in.
Packer Depth 3905 ft. Size 6 3/4 in. Packer depth _____ ft. Size 6 3/4 in.

Depth of Selective Zone Set _____

Top Recorder Depth (Inside) 3890 ft. Recorder Number 5950 Cap. 5000 P.S.I.
Bottom Recorder Depth (Outside) 3909 ft. Recorder Number 0230 Cap. 5000 P.S.I.
Below Straddle Recorder Depth _____ ft. Recorder Number _____ Cap. _____ P.S.I.

Mud Type Chem Viscosity 55 Drill Collar Length 117 ft. I.D. 2 1/4 in.
Weight 9.2 Water Loss 8.0 cc. Weight Pipe Length 0 ft. I.D. 2 7/8 in.
Chlorides 3500 P.P.M. Drill Pipe Length 3755 ft. I.D. 3 1/2 in.
Jars: Make STERLING Serial Number 11 Test Tool Length 33 ft. Tool Size 3 1/2-IF in.
Did Well Flow? NO Reversed Out NO Anchor Length 35 ft. Size 4 1/2-FH in.
Main Hole Size 7 7/8 Tool Joint Size 4 1/2 XH in. Surface Choke Size 1 in. Bottom Choke Size 5/8 in.

Blow: 1st Open: WSB-BUILT TO 1 1/2" IN 30 MINUTES NOBB
2nd Open: NO BLOW-NO BUILD (FLUSHED TOOL) GOOD SURGE, BLOW FINISHED AT 1/4" NOBB

Recovered 65 ft. of MUD 100%M
Recovered 65 ft. of TOTAL FLUID
Recovered _____ ft. of _____
Recovered _____ ft. of _____

Recovered _____ ft. of _____	Price Job
Recovered _____ ft. of _____	Other Charges
Remarks: <u>TOOL SAMPLE: 9%W 91%M WITH A LIGHT OIL SCUM</u>	Insurance
_____	Total

Time Set Packer(s) 4:20P.M. A.M. P.M. Time Started Off Bottom 6:50P.M. A.M. P.M. Maximum Temperature 115

Initial Hydrostatic Pressure..... (A) 1880 P.S.I.
Initial Flow Period..... Minutes 30 (B) 15 P.S.I. to (C) 36 P.S.I.
Initial Closed In Period..... Minutes 45 (D) 919 P.S.I.
Final Flow Period..... Minutes 30 (E) 38 P.S.I. to (F) 58 P.S.I.
Final Closed In Period..... Minutes 45 (G) 889 P.S.I.
Final Hydrostatic Pressure..... (H) 1869 P.S.I.

Diamond Testing shall not be liable for damages of any kind to the property or personnel of the one for whom a test is made or for any loss suffered or sustained, directly or indirectly, through the use of its equipment, or its statement or opinion concerning the result of any test. Tools lost or damaged in the hole shall be paid for at cost by the party for whom the test is made.