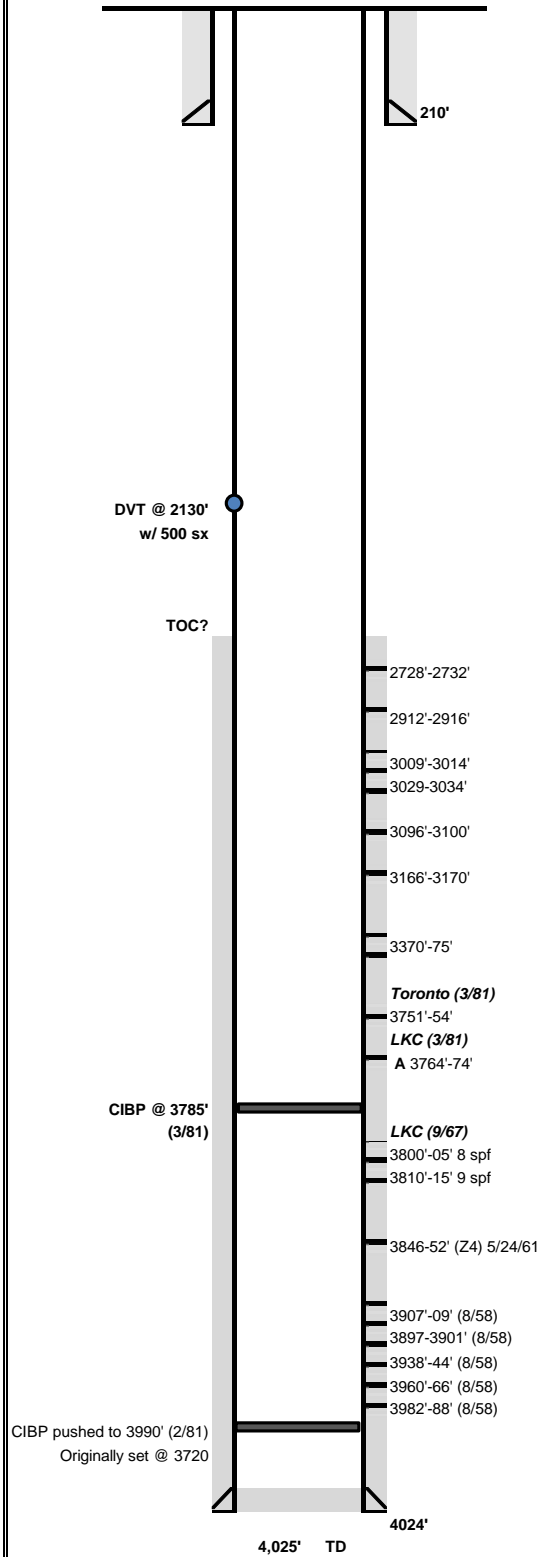


WELBORE SCHEMATIC

CURRENT



Lease: Elrick Unit	Well No. 3-3
API No. 15-065-03288	Status TA
Location: 330' FSL, 330' FEL SE NWW NE. Sec 15- T10S- R25W	
County: Graham	State: Kansas
Field: Elrick	Spud Date: 7/2/1958
TD 4025'	KB 2501'
PBTD 3785'	Comp Date: 7/11/1958
Current Perfs/OH: 2728'-3774'	
Current Zone:	

Surface Equipment	
Unit Make:	Unit Size:
Unit S/N:	Unit Rotation:
SPM:	Stroke Length:
Prime Mover:	Unit Sheave:
Motor S/N:	Motor Sheave:
	Motor RPM:

Casing Breakdown					
	Size	Grade / Wt	Depth	Hole Size	Cement
Surface	8-5/8"	24#	210'	12-1/4"	175 sx
Production	5-1/2"	14#	4024'	7-7/8"	180 sx
Production					
Production					
Liner					

Tubing Breakdown		
Qty	Description	Footage
		0
TOTAL		

Rod Breakdown		
Qty	Description	Footage
TOTAL		0.00'

Comments

IP: 132 bopd

5/81: Tested 16 BOPD / 230 BWPD 2300' FL

SI: 4/10/2010. Well down on 4/15/09. Underground fault in electrical line. Uneconomical to fix

Last test < 1 BOPD