



TRILOBITE TESTING, INC.

DRILL STEM TEST REPORT

American Warrior Inc
 3118 Cummings Rd
 PO Box 399
 Garden City Ks 67846
 ATTN: Cecil O'Brate, Luke T

4-18s-9w Rice

Remmert 1-4

Job Ticket: 65459

DST#: 2

Test Start: 2016.05.04 @ 17:31:01

GENERAL INFORMATION:

Formation: **Arbuckle**
 Deviated: No Whipstock: ft (KB)
 Time Tool Opened: 19:15:26
 Time Test Ended: 00:23:13
 Interval: **3272.00 ft (KB) To 3279.00 ft (KB) (TVD)**
 Total Depth: 3279.00 ft (KB) (TVD)
 Hole Diameter: 7.85 inches Hole Condition: Fair
 Test Type: Conventional Bottom Hole (Reset)
 Tester: Ray Schwager
 Unit No: 77
 Reference Elevations: 1734.00 ft (KB)
 1726.00 ft (CF)
 KB to GR/CF: 8.00 ft

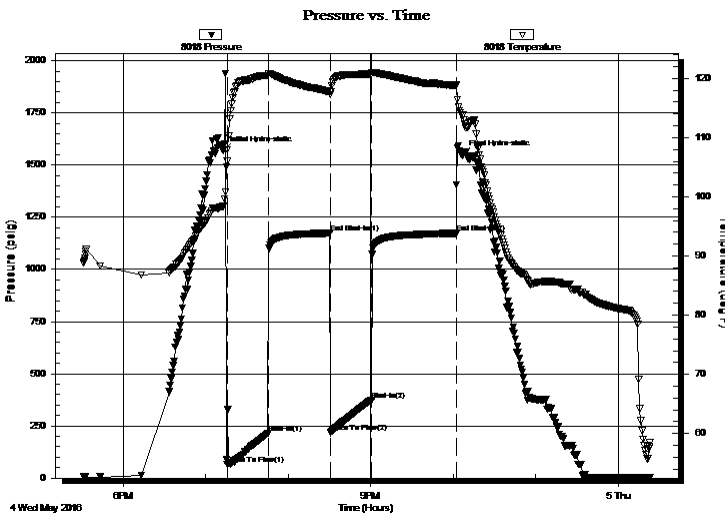
Serial #: 8018

Inside

Press @ Run Depth: 374.43 psig @ 3273.00 ft (KB) Capacity: 8000.00 psig
 Start Date: 2016.05.04 End Date: 2016.05.05 Last Calib.: 2016.05.05
 Start Time: 17:31:01 End Time: 00:23:14 Time On Btm: 2016.05.04 @ 19:12:56
 Time Off Btm: 2016.05.04 @ 22:06:25

TEST COMMENT: 30-IFP-w k to strg in 5min
 45-ISIP-no bl
 30-FFP-w k to strg in 7 min
 60-FSIP-no bl

PRESSURE SUMMARY



Time (Min.)	Pressure (psig)	Temp (deg F)	Annotation
0	1568.79	98.41	Initial Hydro-static
3	65.51	106.03	Open To Flow (1)
33	213.61	120.49	Shut-In(1)
78	1174.04	117.80	End Shut-In(1)
78	218.05	117.30	Open To Flow (2)
108	374.43	120.72	Shut-In(2)
170	1172.99	118.80	End Shut-In(2)
174	1550.30	113.88	Final Hydro-static

Recovery

Length (ft)	Description	Volume (bbl)
0.00	70'GIP	0.00
495.00	Water	6.67
62.00	M&OCW 20%O10%M70%W	0.87
186.00	GM&WCO 10%G55%O25%W10%M	2.61
50.00	CO	0.70

* Recovery from multiple tests

Gas Rates

Choke (inches)	Pressure (psig)	Gas Rate (Mcf/d)



**TRILOBITE
TESTING, INC.**

DRILL STEM TEST REPORT

FLUID SUMMARY

American Warrior Inc

4-18s-9w Rice

3118 Cummings Rd
PO Box 399
Garden City Ks 67846
ATTN: Cecil O'Brate, Luke T

Remmert 1-4

Job Ticket: 65459

DST#: 2

Test Start: 2016.05.04 @ 17:31:01

Mud and Cushion Information

Mud Type: Gel Chem

Mud Weight: 9.00 lb/gal

Viscosity: 60.00 sec/qt

Water Loss: 10.75 in³

Resistivity: ohm.m

Salinity: 12300.00 ppm

Filter Cake: 1.00 inches

Cushion Type:

Cushion Length: ft

Cushion Volume: bbl

Gas Cushion Type:

Gas Cushion Pressure: psig

Oil API: 41 deg API

Water Salinity: 25000 ppm

Recovery Information

Recovery Table

Length ft	Description	Volume bbl
0.00	70'GIP	0.000
495.00	Water	6.670
62.00	M&OCW 20%O10%M70%W	0.870
186.00	GM&WCO 10%G55%O25%W10%M	2.609
50.00	CO	0.701

Total Length: 793.00 ft Total Volume: 10.850 bbl

Num Fluid Samples: 0

Num Gas Bombs: 0

Serial #:

Laboratory Name:

Laboratory Location:

Recovery Comments: RW .27@66F

