



**TRILOBITE TESTING, INC**

# DRILL STEM TEST REPORT

American Warrior Inc  
 3118 Cummings Rd  
 PO Box 399  
 Garden City Ks 67846  
 ATTN: Cecil O'Brate, Luke T

**4-18s-9w Rice**

**Remmert 1-4**

Job Ticket: 65458

**DST#: 1**

Test Start: 2016.05.04 @ 05:05:47

## GENERAL INFORMATION:

Formation: **Conglo Sd**  
 Deviated: No Whipstock: ft (KB)  
 Time Tool Opened: 07:08:42  
 Time Test Ended: 11:36:56  
 Interval: **3167.00 ft (KB) To 3261.00 ft (KB) (TVD)**  
 Total Depth: 3261.00 ft (KB) (TVD)  
 Hole Diameter: 7.85 inches Hole Condition: Fair  
 Test Type: Conventional Bottom Hole (Initial)  
 Tester: Ray Schwager  
 Unit No: 77  
 Reference Elevations: 1734.00 ft (KB)  
 1726.00 ft (CF)  
 KB to GR/CF: 8.00 ft

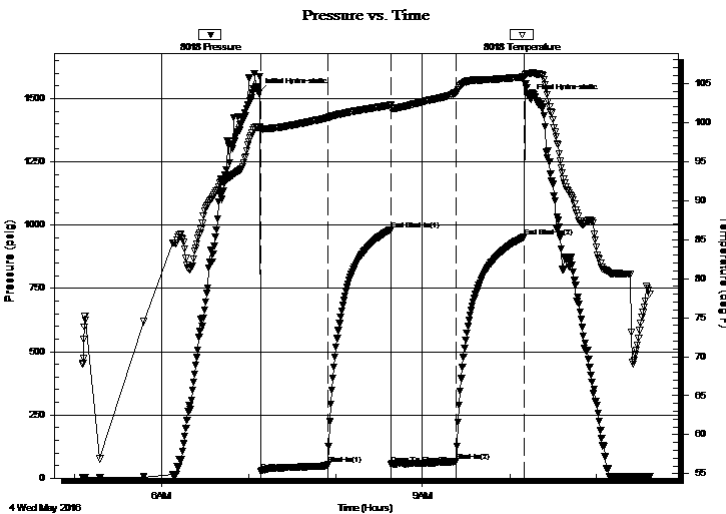
## Serial #: 8018

Inside

Press@RunDepth: 65.64 psig @ 3169.00 ft (KB) Capacity: 8000.00 psig  
 Start Date: 2016.05.04 End Date: 2016.05.04 Last Calib.: 2016.05.04  
 Start Time: 05:05:47 End Time: 11:36:56 Time On Btm: 2016.05.04 @ 07:06:57  
 Time Off Btm: 2016.05.04 @ 10:14:11

TEST COMMENT: 45-IFP-w k bl thru-out 1/4"to 3"bl  
 45-ISIP-no bl  
 45-FFP-w k bl thru-out surface to 1/2"bl  
 45-FSIP-no bl

## PRESSURE SUMMARY



Time (Min.)	Pressure (psig)	Temp (deg F)	Annotation
0	1524.13	99.38	Initial Hydro-static
2	27.23	99.06	Open To Flow (1)
48	53.30	100.59	Shut-In(1)
92	982.20	102.21	End Shut-In(1)
92	55.81	101.70	Open To Flow (2)
137	65.64	103.86	Shut-In(2)
184	953.62	105.84	End Shut-In(2)
188	1498.61	106.28	Final Hydro-static

## Recovery

Length (ft)	Description	Volume (bbl)
95.00	WM 45%W55%M	1.06

## Gas Rates

Choke (inches)	Pressure (psig)	Gas Rate (Mcf/d)



**TRILOBITE  
TESTING, INC**

# DRILL STEM TEST REPORT

## FLUID SUMMARY

American Warrior Inc

**4-18s-9w Rice**

3118 Cummings Rd  
PO Box 399  
Garden City Ks 67846  
ATTN: Cecil O'Brate,Luke T

**Remmert 1-4**

Job Ticket: 65458

**DST#: 1**

Test Start: 2016.05.04 @ 05:05:47

### Mud and Cushion Information

Mud Type: Gel Chem

Mud Weight: 9.00 lb/gal

Viscosity: 51.00 sec/qt

Water Loss: 11.17 in<sup>3</sup>

Resistivity: ohm.m

Salinity: 11700.00 ppm

Filter Cake: 1.00 inches

Cushion Type:

Cushion Length: ft

Cushion Volume: bbl

Gas Cushion Type:

Gas Cushion Pressure: psig

Oil API:

Water Salinity: 24000 ppm

deg API

### Recovery Information

Recovery Table

Length ft	Description	Volume bbl
95.00	WM 45%W55%M	1.059

Total Length: 95.00 ft      Total Volume: 1.059 bbl

Num Fluid Samples: 0

Num Gas Bombs: 0

Serial #:

Laboratory Name:

Laboratory Location:

Recovery Comments: RW .4 @ 50F

