



TRILOBITE TESTING, INC

DRILL STEM TEST REPORT

Eagle creek corporation
 8100 E 22nd North Bldge 1500
 Wichita, Ks 67226
 ATTN: Bob O Dell

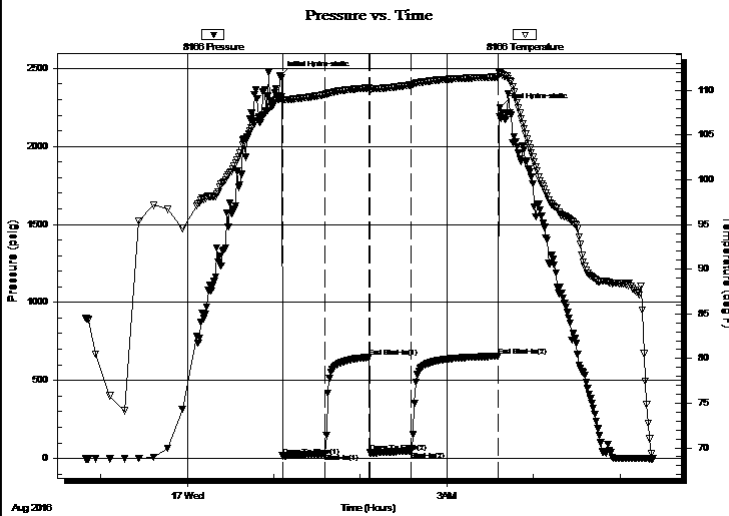
31-20-35w Wichita, KS
Kysar 1-31
 Job Ticket: 65504 **DST#: 1**
 Test Start: 2016.08.16 @ 22:49:35

GENERAL INFORMATION:

Formation: **Ft. Scott**
 Deviated: No Whipstock: ft (KB)
 Time Tool Opened: 01:06:05
 Time Test Ended: 05:22:35
 Interval: **4643.00 ft (KB) To 4670.00 ft (KB) (TVD)**
 Total Depth: 4670.00 ft (KB) (TVD)
 Hole Diameter: 7.88 inches Hole Condition: Good
 Test Type: Conventional Bottom Hole (Initial)
 Tester: Brandon Turley
 Unit No: 79
 Reference Elevations: 3217.00 ft (KB)
 3212.00 ft (CF)
 KB to GR/CF: 5.00 ft

Serial #: 8166 Outside
 Press@RunDepth: 47.55 psig @ 4644.00 ft (KB) Capacity: 8000.00 psig
 Start Date: 2016.08.16 End Date: 2016.08.17 Last Calib.: 2016.08.17
 Start Time: 22:49:40 End Time: 05:22:34 Time On Btm: 2016.08.17 @ 01:05:05
 Time Off Btm: 2016.08.17 @ 03:37:05

TEST COMMENT: IF: 1/4 blow died in 14 min.
 IS: No return.
 FF: No blow
 FS: No return.



PRESSURE SUMMARY

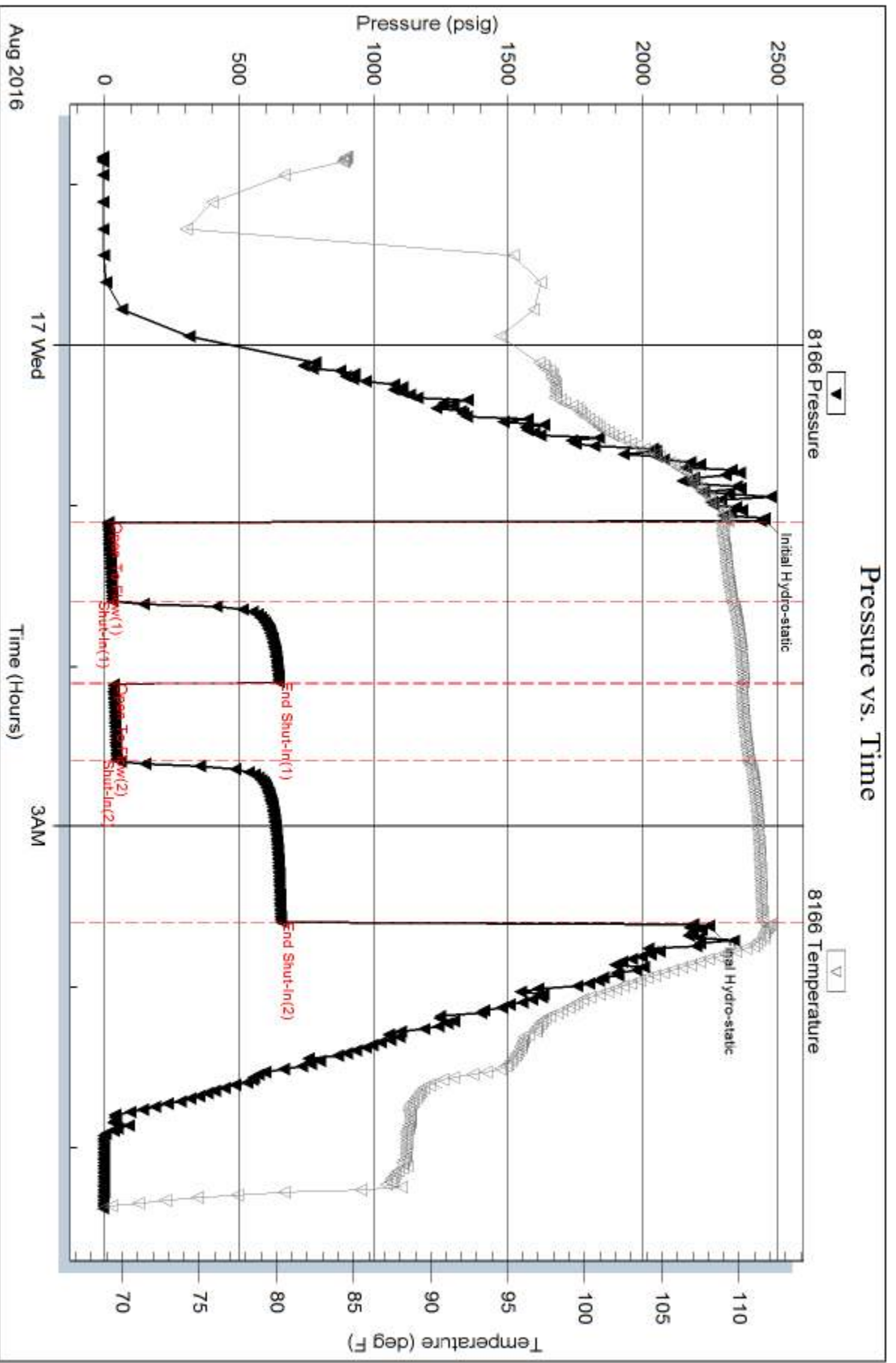
Time (Min.)	Pressure (psig)	Temp (deg F)	Annotation
0	2454.45	109.21	Initial Hydro-static
1	17.06	108.78	Open To Flow (1)
31	31.58	109.52	Shut-In(1)
61	649.36	110.29	End Shut-In(1)
62	37.10	109.90	Open To Flow (2)
90	47.55	110.61	Shut-In(2)
151	655.74	111.51	End Shut-In(2)
152	2246.48	111.87	Final Hydro-static

Recovery

Length (ft)	Description	Volume (bbl)
65.00	w cm 10%w 90%m	0.32

Gas Rates

	Choke (inches)	Pressure (psig)	Gas Rate (Mcf/d)



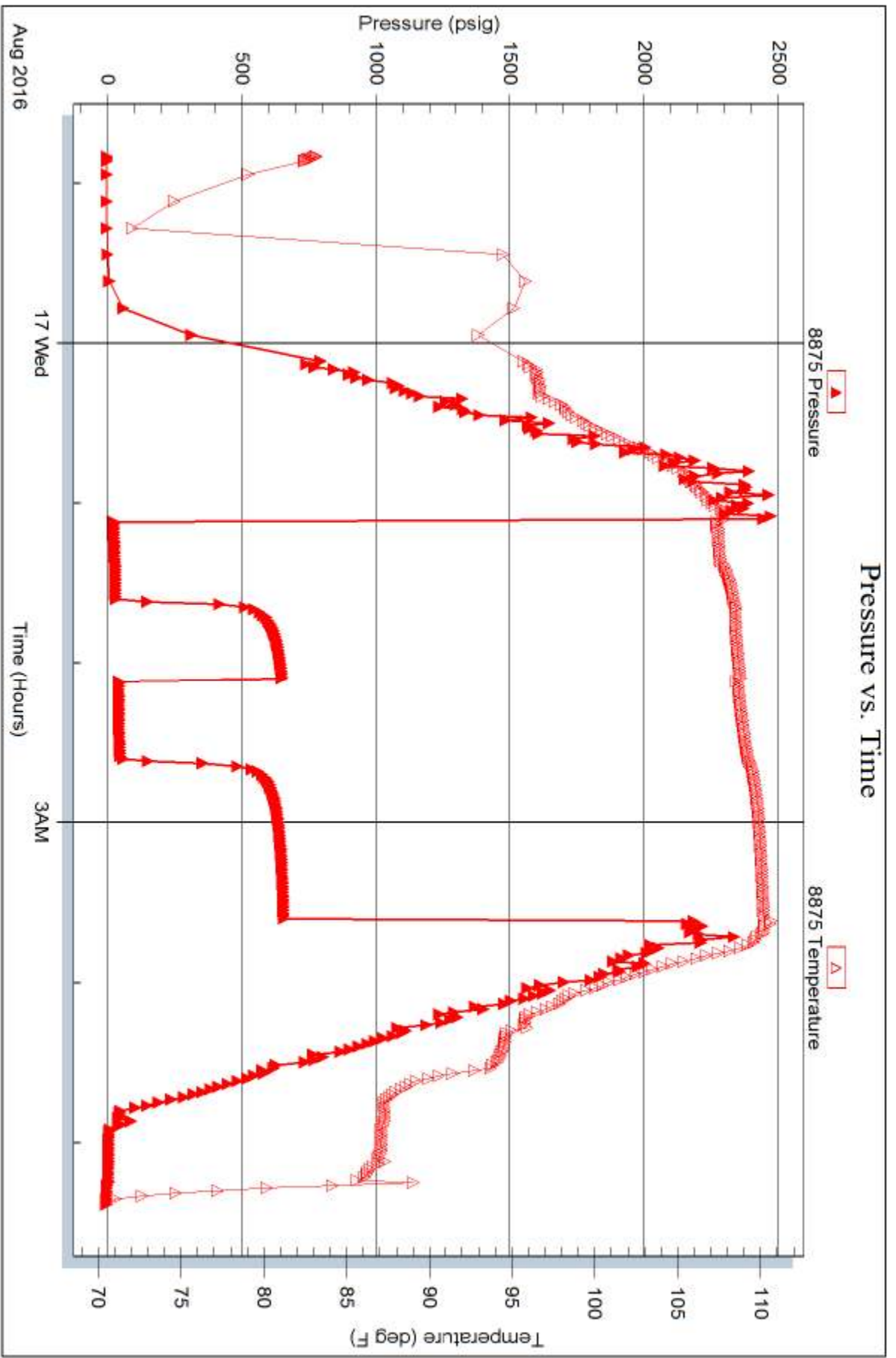
Serial #: 8875

Inside

Eagle creek corporation

Kysar 1-31

DST Test Number: 1



Tribble Testing, Inc

Ref. No: 65504

Printed: 2016.08.17 @ 06:21:02