

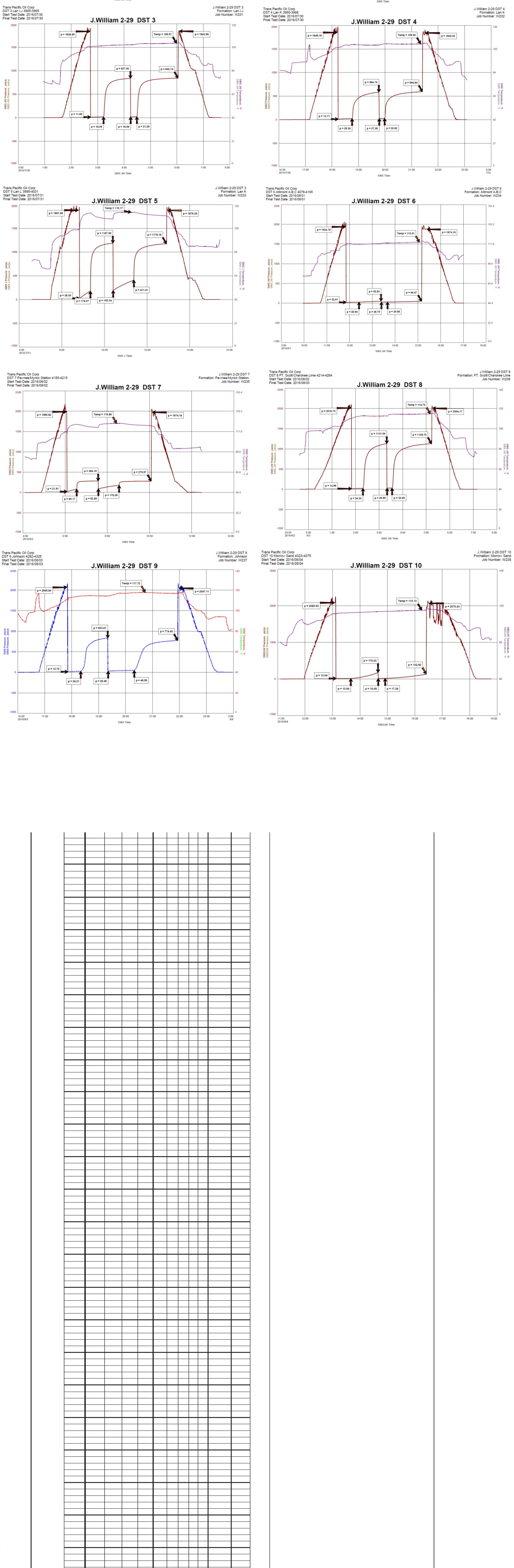
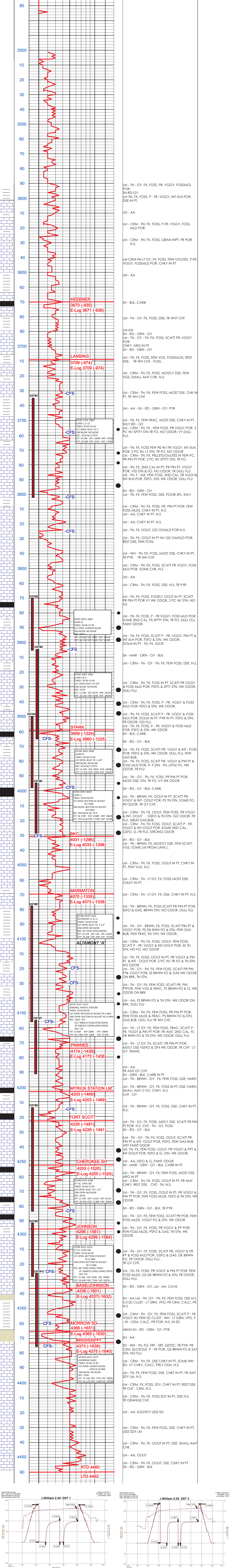
**GEOLOGISTS REPORT**  
**DRILLING TIME AND SAMPLE LOG**

Geologist on Well	Bryce Bidleman	ELEVATIONS	KB 2735
LEASE	J. William 2-29	DF	
FIELD	Cortina	DF	
LOCATION	971 FSL 3208 FEEL	GL 2728	
SEC	29	TWSP	14S
COUNTY	Logan	STATE	Kansas
CONTRACTOR	Pickett Drilling Rig #10	MEASUREMENTS ARE ALL FROM KELL BUSHING	
RTD	7/23/2016	COMP	08/05/2016
MUD UP	3330	TYPE MUD	Fresh
SAMPLES SAVED FROM	3600	TO RTD	
DRILLING TIME KEPT FROM	3200	TO RTD	
SAMPLES EXAMINED FROM	3600	TO RTD	
GEOLOGICAL SUPERVISION FROM	3350		
REFERENCE WELL	Rose Trust A 1-1-29-14S-32W		
Formation	Sample Tops	E-log Tops	Strat Post
Anhydrite	2145 (-590)	2145 (-590)	+5
Heebner	3670 (-935)	3671 (-936)	-5
Lansing	3709 (-974)	3709 (-974)	-5
Stark	3959 (-1224)	3960 (-1225)	-6
Marmaton	4070 (-1335)	4073 (-1338)	-8
Fort Scott	4223 (-1488)	4226 (-1491)	-14
Johnson	4296 (-1561)	4299 (-1564)	-17
Mississippi	4373 (-1638)	4375 (-1640)	-26

REMARKS The J. William 2-29 drilled out to the structural position which was accurately indicated on seismic maps. Several shows of oil were observed in samples, all were covered by DST's. Due to encouraging DST results and electric log data, it was decided to run 5 1/2" production casing to further test the Johnson and Altamont 'C'.

Respectfully,  
W. Bryce Bidleman

DEPTH	LITHOLOGY	DRILLING TIME IN MINUTES PER FOOT	SAMPLE DESCRIPTION	REMARKS
-------	-----------	-----------------------------------	--------------------	---------



CONDUCTOR	NA
SURFACE 8 5/8" @ 218'	
PRODUCTION NONE	
ELECTRICAL SUBVEYS	
DLL DLOG M.L. PE	
E/L	