



TEMPORARY ABANDONMENT WELL APPLICATION

All blanks must be complete

OPERATOR: License# _____
 Name: _____
 Address 1: _____
 Address 2: _____
 City: _____ State: _____ Zip: _____ + _____
 Contact Person: _____
 Phone: (_____) _____
 Contact Person Email: _____
 Field Contact Person: _____
 Field Contact Person Phone: (_____) _____

API No. 15- _____
 Spot Description: _____
 _____ - _____ - _____ - _____ Sec. _____ Twp. _____ S. R. _____ E W
 _____ feet from N / S Line of Section
 _____ feet from E / W Line of Section
 GPS Location: Lat: _____, Long: _____
(e.g. xx.xxxxx) (e.g. -xxx.xxxxx)
 Datum: NAD27 NAD83 WGS84
 County: _____ Elevation: _____ GL KB
 Lease Name: _____ Well #: _____
 Well Type: (check one) Oil Gas OG WSW Other: _____
 SWD Permit #: _____ ENHR Permit #: _____
 Gas Storage Permit #: _____
 Spud Date: _____ Date Shut-In: _____

| | Conductor | Surface | Production | Intermediate | Liner | Tubing |
|------------------|-----------|---------|------------|--------------|-------|--------|
| Size | | | | | | |
| Setting Depth | | | | | | |
| Amount of Cement | | | | | | |
| Top of Cement | | | | | | |
| Bottom of Cement | | | | | | |

Casing Fluid Level from Surface: _____ How Determined? _____ Date: _____
 Casing Squeeze(s): _____ to _____ w / _____ sacks of cement, _____ to _____ w / _____ sacks of cement. Date: _____
(top) (bottom) (top) (bottom)
 Do you have a valid Oil & Gas Lease? Yes No
 Depth and Type: Junk in Hole at _____ Tools in Hole at _____ Casing Leaks: Yes No Depth of casing leak(s): _____
(depth) (depth)
 Type Completion: ALT. I ALT. II Depth of: DV Tool: _____ w / _____ sacks of cement Port Collar: _____ w / _____ sack of cement
(depth) (depth)
 Packer Type: _____ Size: _____ Inch Set at: _____ Feet
 Total Depth: _____ Plug Back Depth: _____ Plug Back Method: _____

Geological Data:

| Formation Name | Formation Top | Formation Base | Completion Information |
|----------------|-------------------------|--|------------------------|
| 1. _____ | At: _____ to _____ Feet | Perforation Interval _____ to _____ Feet or Open Hole Interval _____ to _____ Feet | |
| 2. _____ | At: _____ to _____ Feet | Perforation Interval _____ to _____ Feet or Open Hole Interval _____ to _____ Feet | |

UNDER PENALTY OF PERJURY I HEREBY ATTEST THAT THE INFORMATION CONTAINED HEREIN IS TRUE AND CORRECT TO THE BEST OF MY KNOWLEDGE

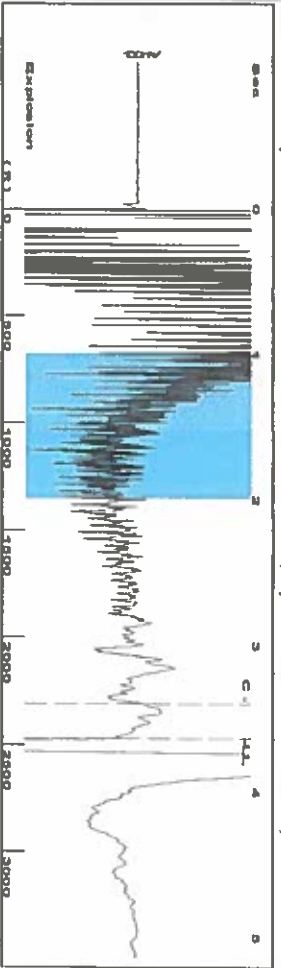
Submitted Electronically

| | | | | | |
|---|--|----------------|---------------------|----------------------|---------------------------------|
| Do NOT Write in This Space - KCC USE ONLY | Date Tested: _____ | Results: _____ | Date Plugged: _____ | Date Repaired: _____ | Date Put Back in Service: _____ |
| | Review Completed by: _____ Comments: _____ | | | | |
| TA Approved: <input type="checkbox"/> Yes <input type="checkbox"/> Denied Date: _____ | | | | | |

Mail to the Appropriate KCC Conservation Office:

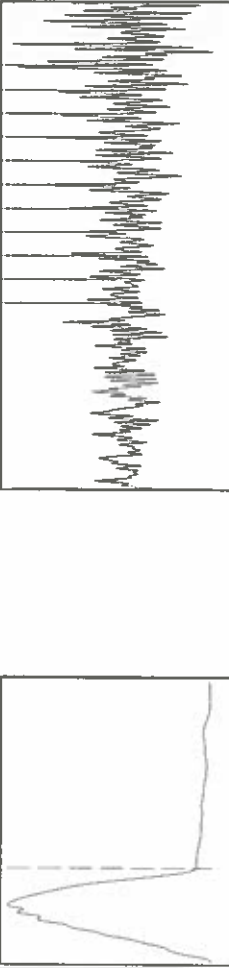
| | | |
|--|---|--------------------|
| | KCC District Office #1 - 210 E. Frontview, Suite A, Dodge City, KS 67801 | Phone 620.225.8888 |
| | KCC District Office #2 / UPGS - 3450 N. Rock Road, Building 600, Suite 601, Wichita, KS 67226 | Phone 316.630.4000 |
| | KCC District Office #3 - 1500 SW Seventh Steet, Chanute, KS 66720 | Phone 620.432.2300 |
| | KCC District Office #4 - 2301 E. 13th Street, Hays, KS 67601-2651 | Phone 785.625.0550 |

Group: LIBERAL T AD WELLS Well: IHL OFF A-1 (acquired on: 08/25/16 14:51:11)



Filter Type High Pass Automatic Collar Count Yes
 Manual Acoustic Velot 328.81 f/s Manual JTS/sec 20.5761
 Time 3.63 sec
 Joints 76.4943 JIS
 Depth 2470.00 ft

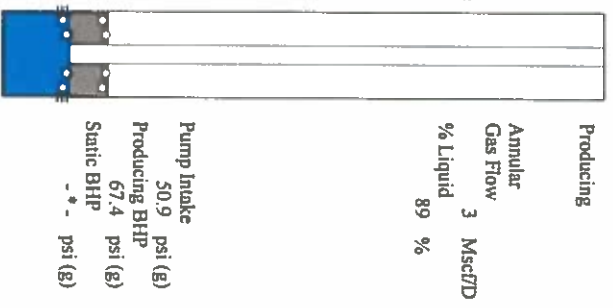
1.0 to 2.0 (Sec) |



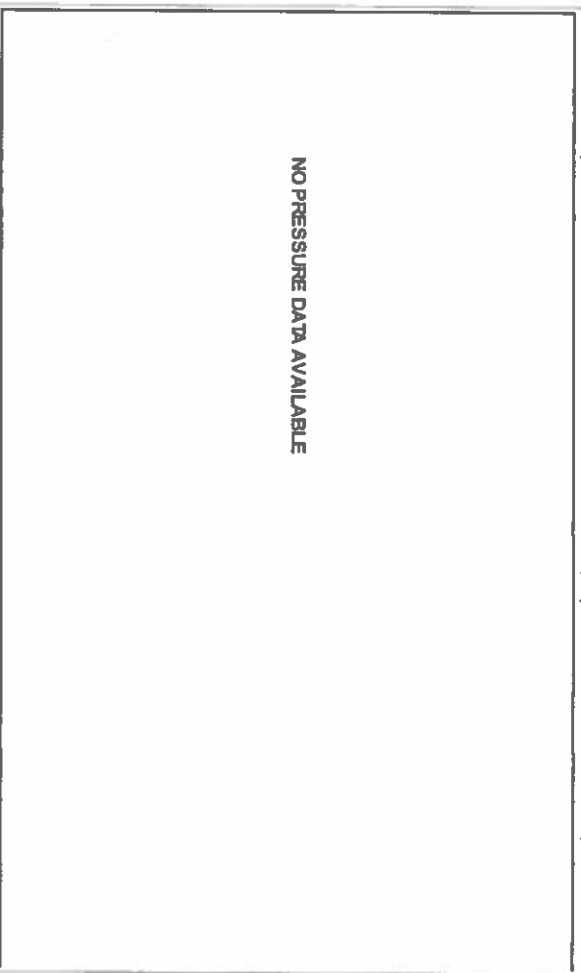
Analysis Method: Automatic

Group: LIBERAL T AD WELLS Well: IHL OFF A-1 (acquired on: 08/25/16 14:51:11)

| | | | |
|---|------------|--|---------------------------|
| Production Current | Potential | Casing Pressure | Producing |
| Oil -*- | -*- BBL/D | -14.7 psi (g) | Annular Gas Flow 3 Mscf/D |
| Water -*- | -*- BBL/D | Casing Pressure Buildup 0.1 psi | % Liquid 89 % |
| Gas -*- | -*- Mscf/D | 1.00 min Gas/Liquid Interface Pressure -14.7 psi (g) | |
| IPR Method PBHP/SBHP | Vogel -*- | Liquid Level Depth 2470.00 ft | |
| Production Efficiency 0.0 | | Pump Intake Depth 2687.00 ft | |
| Oil 40 deg/API | | Formation Depth 2727.00 ft | |
| Water 1.05 Sp.Gr:H2O | | | |
| Gas 0.70 Sp.Gr:AIR | | | |
| Acoustic Velocity 1360.88 ft/s | | | |
| Formation Submergence | | | |
| Total Gaseous Liquid Column HT (TVD) 217 ft | | | |
| Equivalent Gas Free Liquid HT (TVD) 194 ft | | | |
| Acoustic Test | | | |

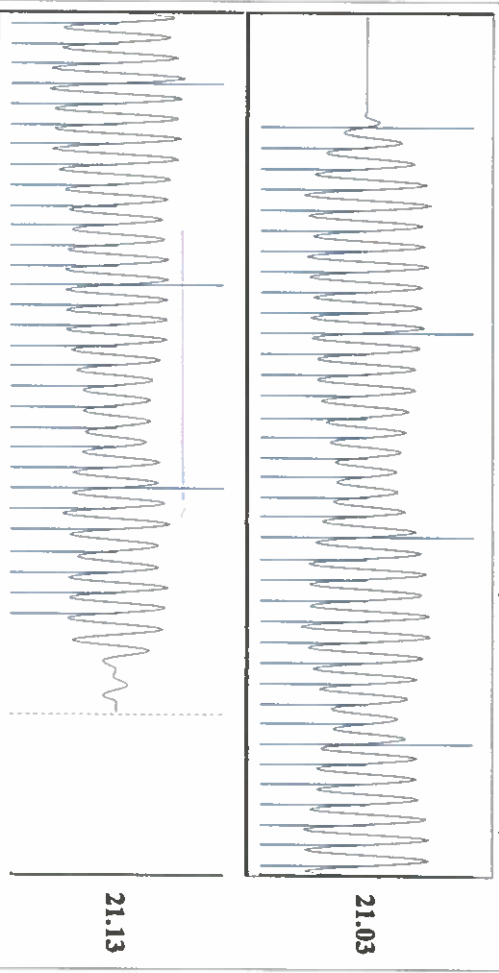


Group: LIBERAL T AD WELLS Well: IHL OFF A-1 (acquired on: 08/25/16 14:51:11)



Change in Pressure 0.11 psi PT 11249
 Change in Time 1.00 min Range 0 - 2 psi

Group: LIBERAL T AD WELLS Well: IHL OFF A-1 (acquired on: 08/25/16 14:51:11)



Acoustic Velocity 1360.88 ft/s Joints counted 66
 Joints Per Second 21.0728 JIS/sec Joints to liquid level 76.4943
 Depth to liquid level 2470 ft Filter Width 18.5761
 Automatic Collar Count Yes Time to 1st Collar 0.264

21.13

21.03

Conservation Division
District Office No. 1
210 E. Frontview, Suite A
Dodge City, KS 67801



Phone: 620-225-8888
Fax: 620-225-8885
<http://kcc.ks.gov/>

Jay Scott Emler, Chairman
Shari Feist Albrecht, Commissioner
Pat Apple, Commissioner

Sam Brownback, Governor

September 09, 2016

Katherine McClurkan
Merit Energy Company, LLC
13727 Noel Road, Suite 1200
Dallas, TX 75240

Re: Temporary Abandonment
API 15-081-00468-00-00
Ihloff A 1
SW/4 Sec.14-30S-32W
Haskell County, Kansas

Dear Katherine McClurkan:

"Your temporary abandonment (TA) application for the well listed above has been approved. In accordance with K.A.R. 82-3-111 the TA status of this well will expire 09/09/2017.

- * If you return this well to service or plug it, please notify the District Office.
- * If you sell this well you are required to file a Transfer of Operator form, T-1.
- * If the well will remain temporarily abandoned, you must submit a new TA application, CP-111, before 09/09/2017.

You may contact me at the number above if you have questions.

Very truly yours,

Michael Maier"