

TEMPORARY ABANDONMENT WELL APPLICATION

OPERATOR: License# _____

Name: _____

Address 1: _____

Address 2: _____

City: _____ State: _____ Zip: _____ + _____

Contact Person: _____

Phone: (_____) _____

Contact Person Email: _____

Field Contact Person: _____

Field Contact Person Phone: (_____) _____

API No. 15- _____

Spot Description: _____

____ - ____ - ____ - ____ Sec. _____ Twp. _____ S. R. _____ ☐ E ☐ W_____ feet from ☐ N / ☐ S Line of Section_____ feet from ☐ E / ☐ W Line of Section

GPS Location: Lat: _____, Long: _____

Datum: ☐ NAD27 ☐ NAD83 ☐ WGS84County: _____ Elevation: _____ ☐ GL ☐ KB

Lease Name: _____ Well #: _____

Well Type: (check one) ☐ Oil ☐ Gas ☐ OG ☐ WSW ☐ Other: _____☐ SWD Permit #: _____ ☐ ENHR Permit #: _____☐ Gas Storage Permit #: _____

Spud Date: _____ Date Shut-In: _____

	Conductor	Surface	Production	Intermediate	Liner	Tubing
Size						
Setting Depth						
Amount of Cement						
Top of Cement						
Bottom of Cement						

Casing Fluid Level from Surface: _____ How Determined? _____ Date: _____

Casing Squeeze(s): _____ to _____ w / _____ sacks of cement, _____ to _____ w / _____ sacks of cement. Date: _____

Do you have a valid Oil & Gas Lease? ☐ Yes ☐ NoDepth and Type: ☐ Junk in Hole at _____ ☐ Tools in Hole at _____ Casing Leaks: ☐ Yes ☐ No Depth of casing leak(s): _____Type Completion: ☐ ALT. I ☐ ALT. II Depth of: ☐ DV Tool: _____ w / _____ sacks of cement ☐ Port Collar: _____ w / _____ sack of cement

Packer Type: _____ Size: _____ Inch Set at: _____ Feet

Total Depth: _____ Plug Back Depth: _____ Plug Back Method: _____

Geological Data:**Formation Name**

Formation Top Formation Base

Completion Information

1. _____ At: _____ to _____ Feet Perforation Interval _____ to _____ Feet or Open Hole Interval _____ to _____ Feet

2. _____ At: _____ to _____ Feet Perforation Interval _____ to _____ Feet or Open Hole Interval _____ to _____ Feet

UNDER PENALTY OF PERJURY I HEREBY ATTEST THAT THE INFORMATION CONTAINED HEREIN IS TRUE AND CORRECT TO THE BEST OF MY KNOWLEDGE

Submitted Electronically

**Do NOT Write in This
Space - KCC USE ONLY**

Date Tested: _____ Results: _____ Date Plugged: _____ Date Repaired: _____ Date Put Back in Service: _____

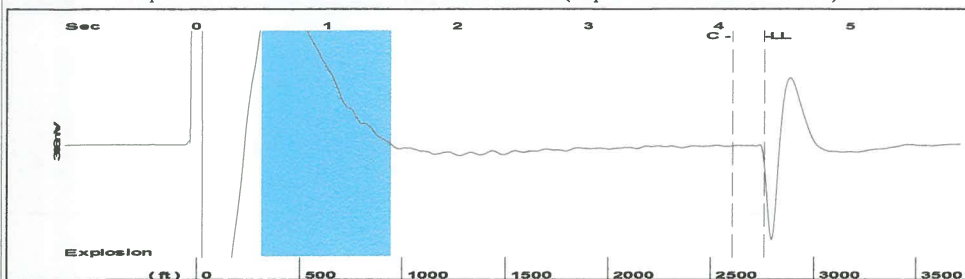
Review Completed by: _____ Comments: _____

TA Approved: ☐ Yes ☐ Denied Date: _____**Mail to the Appropriate KCC Conservation Office:**

	KCC District Office #1 - 210 E. Frontview, Suite A, Dodge City, KS 67801	Phone 620.225.8888
	KCC District Office #2 / UPGS - 3450 N. Rock Road, Building 600, Suite 601, Wichita, KS 67226	Phone 316.630.4000
	KCC District Office #3 - 1500 SW Seventh Steet, Chanute, KS 66720	Phone 620.432.2300
	KCC District Office #4 - 2301 E. 13th Street, Hays, KS 67601-2651	Phone 785.625.0550

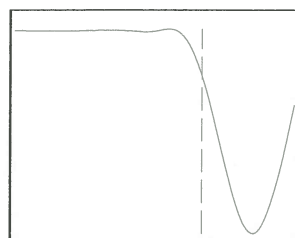
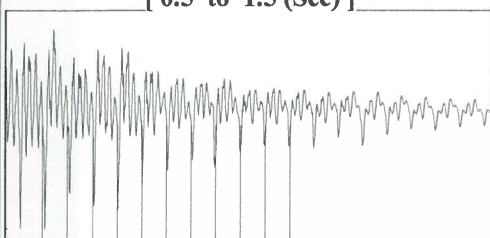
Shot @ 300 psi. 8 psi casing

Group: ELKART TA'D WELLS Well: ANSLEY A-2 (acquired on: 09/12/16 11:59:40)



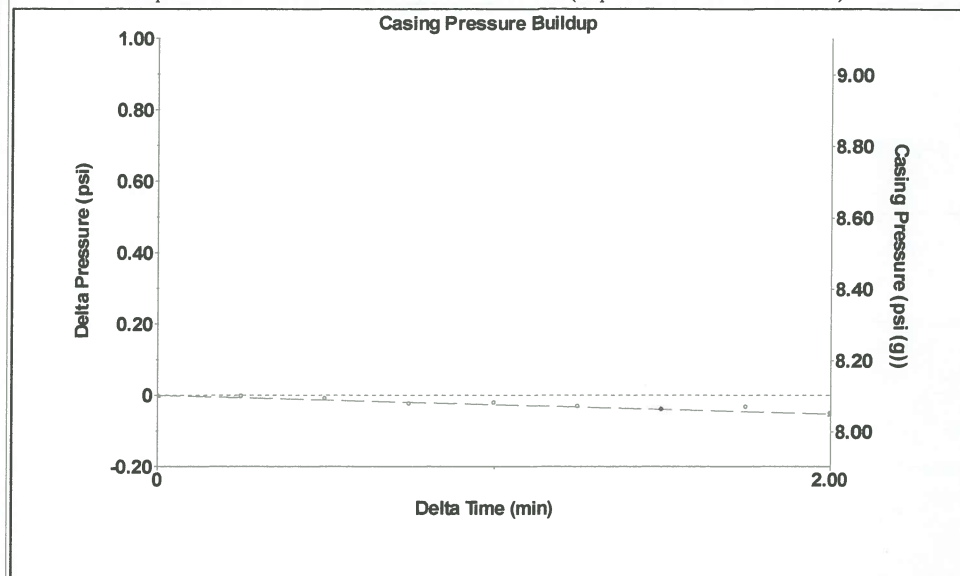
Filter Type High Pass Automatic Collar Count Yes Time 4.344 sec
Manual Acoustic Velocity 1252.96 ft/s Manual JTS/sec 19.7628 Joints 87.0156 Jts
Depth 2758.39 ft

[0.5 to 1.5 (Sec)]



Analysis Method: Automatic

Group: ELKART TA'D WELLS Well: ANSLEY A-2 (acquired on: 09/12/16 11:59:40)



Change in Pressure -0.05 psi PT 11249
Change in Time 2.00 min Range 0 - ? psi

Group: ELKART TA'D WELLS Well: ANSLEY A-2 (acquired on: 09/12/16 11:59:40)

Production
Current Potential
Oil - * - BBL/D
Water - * - BBL/D
Gas - * - Mscf/D

IPR Method Vogel
PBHP/SBHP - * -
Production Efficiency 0.0

Oil 40 deg.API
Water 1.05 Sp.Gr.H2O
Gas 0.74 Sp.Gr.AIR

Acoustic Velocity 1269.98 ft/s

Formation Submergence
Total Gaseous Liquid Column HT (TVD) 117 ft
Equivalent Gas Free Liquid HT (TVD) 117 ft

Acoustic Test

Casing Pressure
8.1 psi (g)
Casing Pressure Buildup
-0.1 psi
2.00 min
Gas/Liquid Interface Pressure
9.7 psi (g)

Liquid Level Depth
2758.39 ft

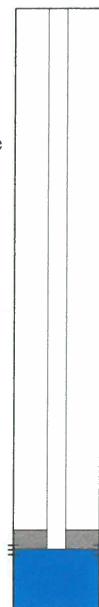
Pump Intake Depth
2875.00 ft

Formation Depth
2877.00 ft

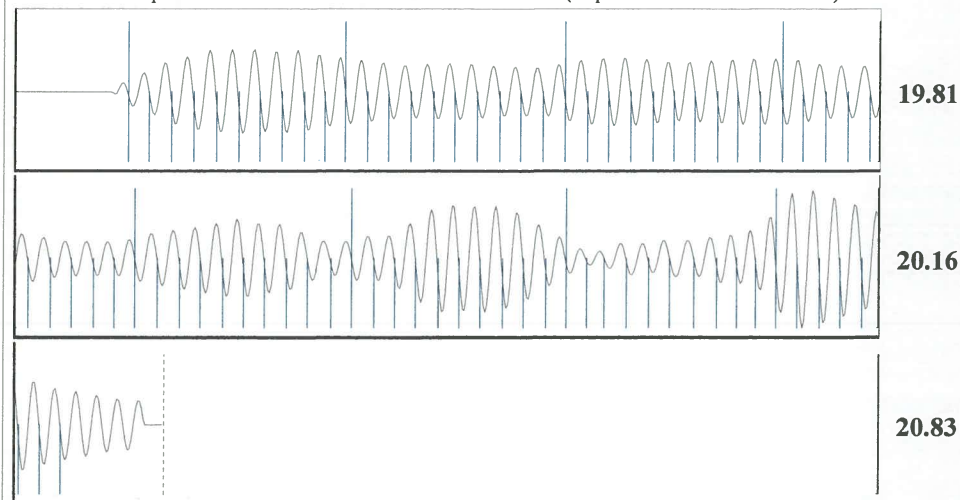
Producing

Annular
Gas Flow 0 Mscf/D
% Liquid 100 %

Pump Intake
49.2 psi (g)
Producing BHP
50.1 psi (g)
Static BHP
- * - psi (g)



Group: ELKART TA'D WELLS Well: ANSLEY A-2 (acquired on: 09/12/16 11:59:40)



Acoustic Velocity 1269.98 ft/s Joints counted 77
Joints Per Second 20.0312 jts/sec Joints to liquid level 87.0156
Depth to liquid level 2758.39 ft Filter Width 17.7628 21.7628
Automatic Collar Count Yes Time to 1st Collar 0.26 4.104

Conservation Division
District Office No. 1
210 E. Frontview, Suite A
Dodge City, KS 67801



Phone: 620-225-8888
Fax: 620-225-8885
<http://kcc.ks.gov/>

Jay Scott Emler, Chairman
Shari Feist Albrecht, Commissioner
Pat Apple, Commissioner

Sam Brownback, Governor

September 13, 2016

Katherine McClurkan
Merit Energy Company, LLC
13727 Noel Road Suite 1200
Dallas, TX 75240

Re: Temporary Abandonment
API 15-129-20080-00-00
Ansley A 2
SE/4 Sec.09-32S-39W
Morton County, Kansas

Dear Katherine McClurkan:

"Your temporary abandonment (TA) application for the well listed above has been approved. In accordance with K.A.R. 82-3-111 the TA status of this well will expire 09/13/2017.

- * If you return this well to service or plug it, please notify the District Office.
- * If you sell this well you are required to file a Transfer of Operator form, T-1.
- * If the well will remain temporarily abandoned, you must submit a new TA application, CP-111, before 09/13/2017.

You may contact me at the number above if you have questions.

Very truly yours,

Michael Maier"