



TEMPORARY ABANDONMENT WELL APPLICATION

OPERATOR: License# _____
 Name: _____
 Address 1: _____
 Address 2: _____
 City: _____ State: _____ Zip: _____ + _____
 Contact Person: _____
 Phone: (_____) _____
 Contact Person Email: _____
 Field Contact Person: _____
 Field Contact Person Phone: (_____) _____

API No. 15- _____
 Spot Description: _____
 _____ - _____ - _____ - _____ Sec. _____ Twp. _____ S. R. _____ E W
 _____ feet from N / S Line of Section
 _____ feet from E / W Line of Section
 GPS Location: Lat: _____, Long: _____
(e.g. xx.xxxxx) (e.g. -xxx.xxxxx)
 Datum: NAD27 NAD83 WGS84
 County: _____ Elevation: _____ GL KB
 Lease Name: _____ Well #: _____
 Well Type: (check one) Oil Gas OG WSW Other: _____
 SWD Permit #: _____ ENHR Permit #: _____
 Gas Storage Permit #: _____
 Spud Date: _____ Date Shut-In: _____

| | Conductor | Surface | Production | Intermediate | Liner | Tubing |
|------------------|-----------|---------|------------|--------------|-------|--------|
| Size | | | | | | |
| Setting Depth | | | | | | |
| Amount of Cement | | | | | | |
| Top of Cement | | | | | | |
| Bottom of Cement | | | | | | |

Casing Fluid Level from Surface: _____ How Determined? _____ Date: _____
 Casing Squeeze(s): _____ to _____ w / _____ sacks of cement, _____ to _____ w / _____ sacks of cement. Date: _____
(top) (bottom) (top) (bottom)
 Do you have a valid Oil & Gas Lease? Yes No
 Depth and Type: Junk in Hole at _____ Tools in Hole at _____ Casing Leaks: Yes No Depth of casing leak(s): _____
(depth) (depth)
 Type Completion: ALT. I ALT. II Depth of: DV Tool: _____ w / _____ sacks of cement Port Collar: _____ w / _____ sack of cement
(depth) (depth)
 Packer Type: _____ Size: _____ Inch Set at: _____ Feet
 Total Depth: _____ Plug Back Depth: _____ Plug Back Method: _____

Geological Data:

| Formation Name | Formation Top | Formation Base | Completion Information |
|----------------|---------------|----------------|--|
| 1. _____ | At: _____ | to _____ Feet | Perforation Interval _____ to _____ Feet or Open Hole Interval _____ to _____ Feet |
| 2. _____ | At: _____ | to _____ Feet | Perforation Interval _____ to _____ Feet or Open Hole Interval _____ to _____ Feet |

UNDER PENALTY OF PERJURY I HEREBY ATTEST THAT THE INFORMATION CONTAINED HEREIN IS TRUE AND CORRECT TO THE BEST OF MY KNOWLEDGE

Submitted Electronically

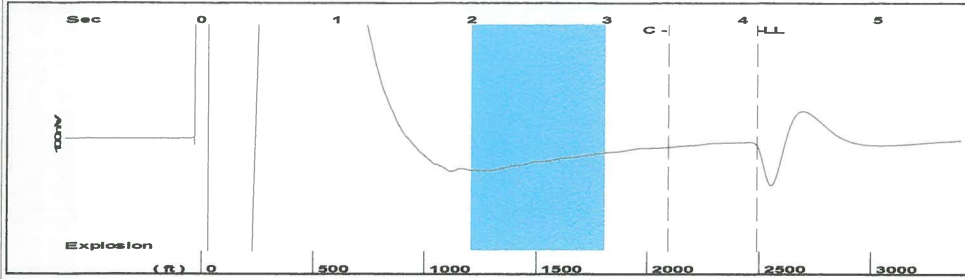
| | | | | | |
|---|--|----------------|---------------------|----------------------|---------------------------------|
| Do NOT Write in This Space - KCC USE ONLY | Date Tested: _____ | Results: _____ | Date Plugged: _____ | Date Repaired: _____ | Date Put Back in Service: _____ |
| | Review Completed by: _____ Comments: _____ | | | | |
| TA Approved: <input type="checkbox"/> Yes <input type="checkbox"/> Denied Date: _____ | | | | | |

Mail to the Appropriate KCC Conservation Office:

| | | |
|--|---|--------------------|
| | KCC District Office #1 - 210 E. Frontview, Suite A, Dodge City, KS 67801 | Phone 620.225.8888 |
| | KCC District Office #2 / UPGS - 3450 N. Rock Road, Building 600, Suite 601, Wichita, KS 67226 | Phone 316.630.4000 |
| | KCC District Office #3 - 1500 SW Seventh Steet, Chanute, KS 66720 | Phone 620.432.2300 |
| | KCC District Office #4 - 2301 E. 13th Street, Hays, KS 67601-2651 | Phone 785.625.0550 |

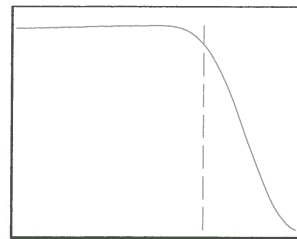
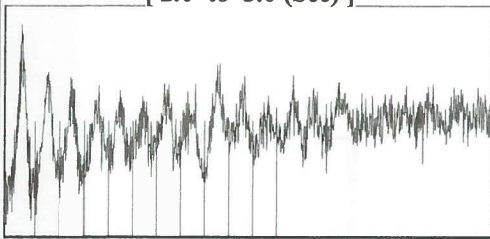
300psi Shot @ 300psi 1psi casing

Group: ELKART TA'D WELLS Well: TURMORROW MORROW UNIT 105S (acquired on: 09/12/16 12:58:19)



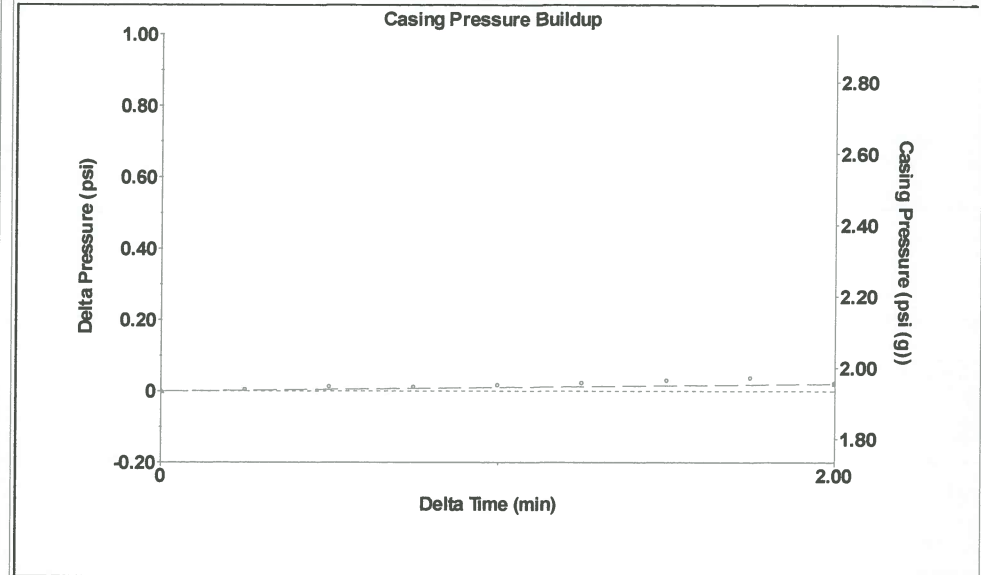
Filter Type High Pass Automatic Collar Count Yes Time 4.109 sec
 Manual Acoustic Vel 1280.81 ft/s Manual JTS/sec 20.202 Joints 78.5241 Jts
 Depth 2489.21 ft

[2.0 to 3.0 (Sec)]



Analysis Method: Automatic

Group: ELKART TA'D WELLS Well: TURMORROW MORROW UNIT 105S (acquired on: 09/12/16 12:58:19)



Change in Pressure 0.02 psi PT 11249
 Change in Time 2.00 min Range 0 - ? psi

Group: ELKART TA'D WELLS Well: TURMORROW MORROW UNIT 105S (acquired on: 09/12/16 12:58:19)

Production
 Current Potential
 Oil - * - * - BBL/D
 Water - * - * - BBL/D
 Gas - * - * - Mscf/D

IPR Method Vogel
 PBHP/SBHP - * -
 Production Efficiency 0.0

Oil 40 deg.API
 Water 1.05 Sp.Gr.H2O
 Gas 0.77 Sp.Gr.AIR

Acoustic Velocity 1211.59 ft/s

Casing Pressure 1.9 psi (g)
 Casing Pressure Buildup 0.0 psi
 2.00 min
 Gas/Liquid Interface Pressure 3.1 psi (g)

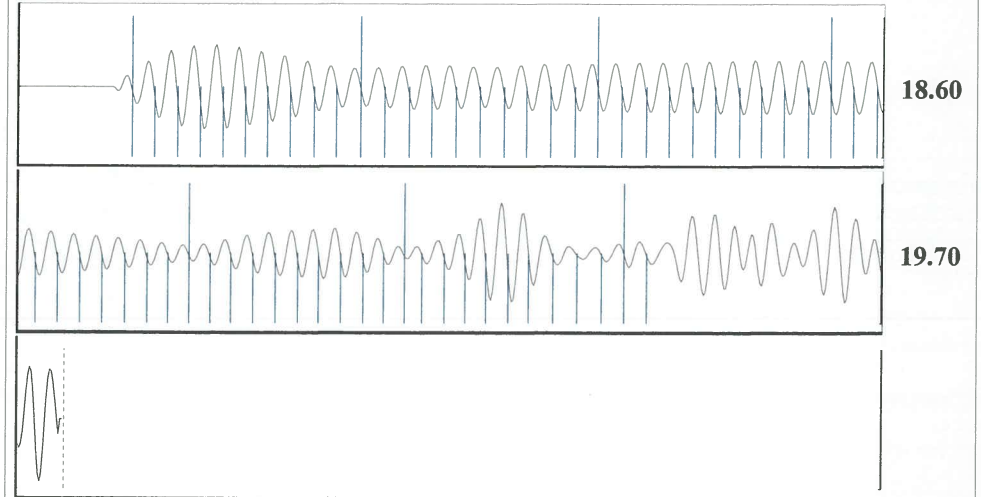
Liquid Level Depth 2489.21 ft
 Pump Intake Depth 5638.00 ft
 Formation Depth 6167.00 ft



Producing
 Annular Gas Flow 0 Mscf/D
 % Liquid 100 %

Pump Intake 1037.9 psi (g)
 Producing BHP 1278.4 psi (g)
 Static BHP - * - psi (g)

Group: ELKART TA'D WELLS Well: TURMORROW MORROW UNIT 105S (acquired on: 09/12/16 12:58:19)



Acoustic Velocity 1211.59 ft/s Joints counted 61
 Joints Per Second 19.1103 jts/sec Joints to liquid level 78.5241
 Depth to liquid level 2489.21 ft Filter Width 18.202 22.202
 Automatic Collar Count Yes Time to 1st Collar 0.264 3.456

Conservation Division
District Office No. 1
210 E. Frontview, Suite A
Dodge City, KS 67801



Phone: 620-225-8888
Fax: 620-225-8885
<http://kcc.ks.gov/>

Jay Scott Emler, Chairman
Shari Feist Albrecht, Commissioner
Pat Apple, Commissioner

Sam Brownback, Governor

September 13, 2016

Katherine McClurkan
Merit Energy Company, LLC
13727 Noel Road, Suite 1200
Dallas, TX 75240

Re: Temporary Abandonment
API 15-129-21725-00-00
Turmorrow Morrow Unit 105 S
SE/4 Sec.07-33S-43W
Morton County, Kansas

Dear Katherine McClurkan:

"Your temporary abandonment (TA) application for the well listed above has been approved. In accordance with K.A.R. 82-3-111 the TA status of this well will expire 09/13/2017.

- * If you return this well to service or plug it, please notify the District Office.
- * If you sell this well you are required to file a Transfer of Operator form, T-1.
- * If the well will remain temporarily abandoned, you must submit a new TA application, CP-111, before 09/13/2017.

You may contact me at the number above if you have questions.

Very truly yours,

Michael Maier"