



TEMPORARY ABANDONMENT WELL APPLICATION

All blanks must be complete

OPERATOR: License# _____
Name: _____
Address 1: _____
Address 2: _____
City: _____ State: _____ Zip: _____ + _____
Contact Person: _____
Phone: (_____) _____
Contact Person Email: _____
Field Contact Person: _____
Field Contact Person Phone: (_____) _____

API No. 15- _____
Spot Description: _____
____ - ____ - ____ - ____ Sec. _____ Twp. _____ S. R. _____ E W
_____ feet from N / S Line of Section
_____ feet from E / W Line of Section
GPS Location: Lat: _____, Long: _____
(e.g. xx.xxxxx) (e.g. -xxx.xxxxx)
Datum: NAD27 NAD83 WGS84
County: _____ Elevation: _____ GL KB
Lease Name: _____ Well #: _____
Well Type: (check one) Oil Gas OG WSW Other: _____
 SWD Permit #: _____ ENHR Permit #: _____
 Gas Storage Permit #: _____
Spud Date: _____ Date Shut-In: _____

	Conductor	Surface	Production	Intermediate	Liner	Tubing
Size						
Setting Depth						
Amount of Cement						
Top of Cement						
Bottom of Cement						

Casing Fluid Level from Surface: _____ How Determined? _____ Date: _____

Casing Squeeze(s): _____ to _____ w / _____ sacks of cement, _____ to _____ w / _____ sacks of cement. Date: _____
(top) (bottom) (top) (bottom)

Do you have a valid Oil & Gas Lease? Yes No

Depth and Type: Junk in Hole at _____ Tools in Hole at _____ Casing Leaks: Yes No Depth of casing leak(s): _____
(depth) (depth)

Type Completion: ALT. I ALT. II Depth of: DV Tool: _____ w / _____ sacks of cement Port Collar: _____ w / _____ sack of cement
(depth) (depth)

Packer Type: _____ Size: _____ Inch Set at: _____ Feet

Total Depth: _____ Plug Back Depth: _____ Plug Back Method: _____

Geological Data:

Formation Name	Formation Top	Formation Base	Completion Information
1. _____	At: _____	to _____ Feet	Perforation Interval _____ to _____ Feet or Open Hole Interval _____ to _____ Feet
2. _____	At: _____	to _____ Feet	Perforation Interval _____ to _____ Feet or Open Hole Interval _____ to _____ Feet

UNDER PENALTY OF PERJURY I HEREBY ATTEST THAT THE INFORMATION CONTAINED HEREIN IS TRUE AND CORRECT TO THE BEST OF MY KNOWLEDGE

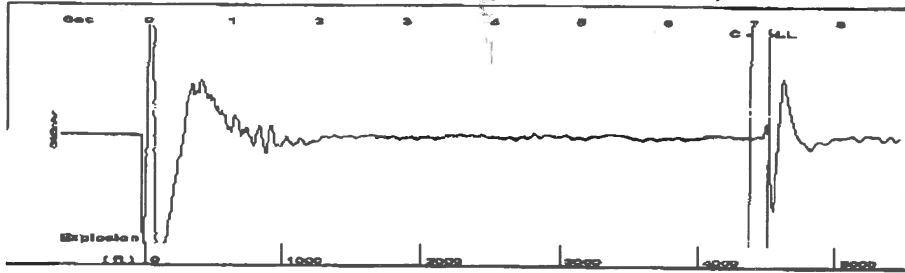
Submitted Electronically

Do NOT Write in This Space - KCC USE ONLY	Date Tested: _____	Results: _____	Date Plugged: _____	Date Repaired: _____	Date Put Back in Service: _____
	Review Completed by: _____ Comments: _____				
TA Approved: <input type="checkbox"/> Yes <input type="checkbox"/> Denied Date: _____					

Mail to the Appropriate KCC Conservation Office:

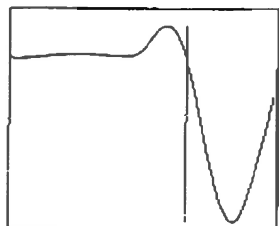
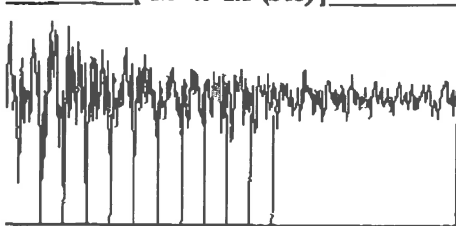
	KCC District Office #1 - 210 E. Frontview, Suite A, Dodge City, KS 67801	Phone 620.225.8888
	KCC District Office #2 / UPGS - 3450 N. Rock Road, Building 600, Suite 601, Wichita, KS 67226	Phone 316.630.4000
	KCC District Office #3 - 1500 SW Seventh Steet, Chanute, KS 66720	Phone 620.432.2300
	KCC District Office #4 - 2301 E. 13th Street, Hays, KS 67601-2651	Phone 785.625.0550

Group: Sawyer Well: CURRY 3-32 (acquired on: 09/23/16 13:07:54)



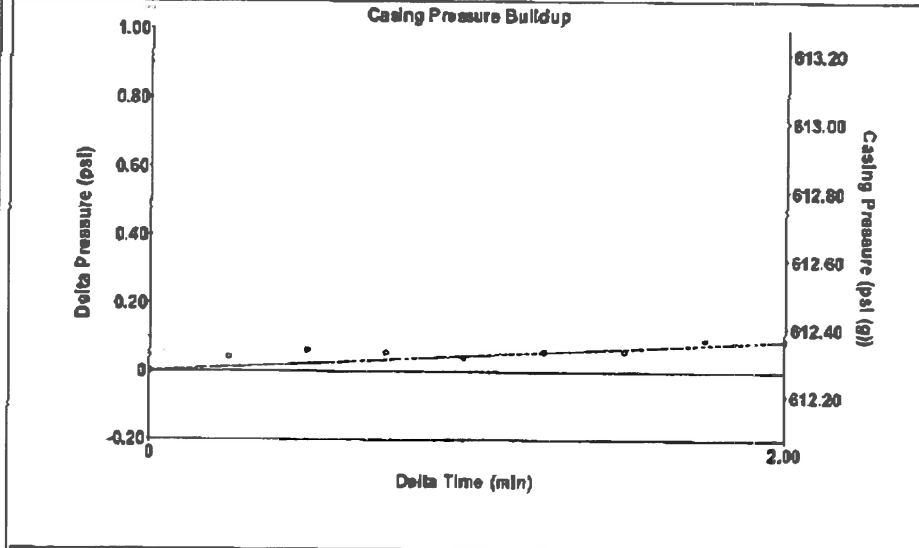
Filter Type High Pass Automatic Collar Count Yes Time 7.192 sec
 Manual Acoustic Velocity 1215.56 ft/s Manual JTS/sec 19.4553 Joints 144.396 Jts
 Depth 4510.94 ft

[1.5 to 2.5 (Sec)]



Analysis Method: Automatic

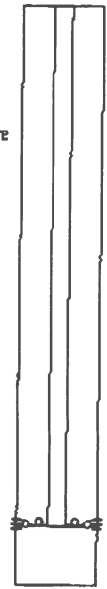
Group: Sawyer Well: CURRY 3-32 (acquired on: 09/23/16 13:07:54)



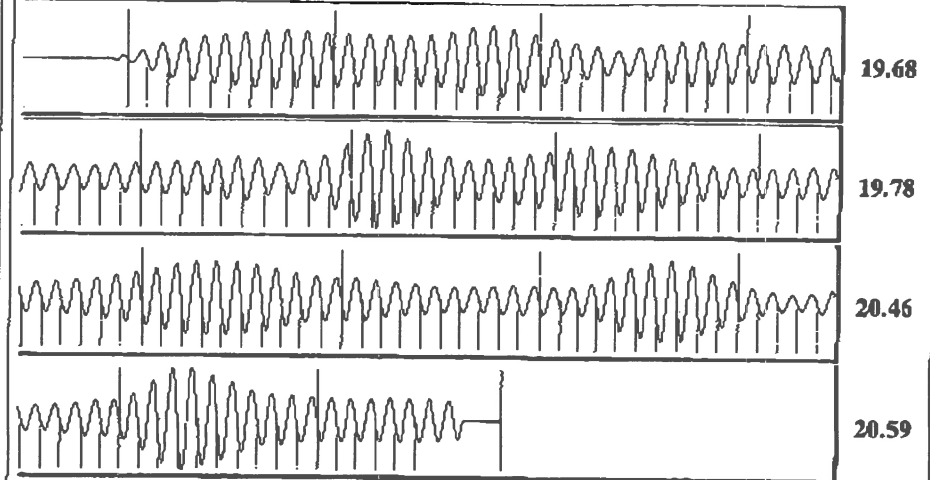
Change in Pressure 0.09 psi PT13440
 Change in Time 2.00 min Range 0 - 7 psi

Group: Sawyer Well: CURRY 3-32 (acquired on: 09/23/16 13:07:54)

Production Current	Potential	Casing Pressure	Producing
Oil -*- BBL/D	-*- BBL/D	612.3 psi (g)	
Water -*- BBL/D	-*- BBL/D	Casing Pressure Buildup	Annular Gas Flow
Gas -*- Mscf/D	-*- Mscf/D	0.089 psi	
		2.00 min	% Liquid 100 %
IPR Method Vogel	Gas/Liquid Interface Pressure	688.2 psi (g)	
PBHP/SBHP -*-	Liquid Level Depth		
Production Efficiency 0.0	4510.94 ft		
Oil 40 deg API	Pump Intake Depth		
Water 1.05 Sp.Gr.H2O	4530.00 ft		
Gas 0.69 Sp.Gr.AIR	Formation Depth		
Acoustic Velocity 1254.43 ft/s	4506.00 ft		
Formation Submergence			
Total Gaseous Liquid Column HT (TVD) 19 ft			
Equivalent Gas Free Liquid HT (TVD) 19 ft			
Acoustic Test			



Group: Sawyer Well: CURRY 3-32 (acquired on: 09/23/16 13:07:54)



Acoustic Velocity 1254.43 ft/s Joints counted 135
 Joints Per Second 20.0773 jts/sec Joints to liquid level 144.396
 Depth to liquid level 4510.94 ft Filter Width 17.4553 21.4553
 Automatic Collar Count Yes Time to 1st Collar 0.256 6.98

Conservation Division
District Office No. 1
210 E. Frontview, Suite A
Dodge City, KS 67801



Phone: 620-225-8888
Fax: 620-225-8885
<http://kcc.ks.gov/>

Jay Scott Emler, Chairman
Shari Feist Albrecht, Commissioner
Pat Apple, Commissioner

Sam Brownback, Governor

September 27, 2016

Franklin R. Greenbaum
F. G. Holl Company L.L.C.
9431 E CENTRAL STE 100
WICHITA, KS 67206-2563

Re: Temporary Abandonment
API 15-151-21986-00-00
CURRY 3-32
NE/4 Sec.32-29S-13W
Pratt County, Kansas

Dear Franklin R. Greenbaum:

"Your temporary abandonment (TA) application for the well listed above has been approved. In accordance with K.A.R. 82-3-111 the TA status of this well will expire 09/27/2017.

- * If you return this well to service or plug it, please notify the District Office.
- * If you sell this well you are required to file a Transfer of Operator form, T-1.
- * If the well will remain temporarily abandoned, you must submit a new TA application, CP-111, before 09/27/2017.

You may contact me at the number above if you have questions.

Very truly yours,

Michael Maier"