



TEMPORARY ABANDONMENT WELL APPLICATION

OPERATOR: License# _____
 Name: _____
 Address 1: _____
 Address 2: _____
 City: _____ State: _____ Zip: _____ + _____
 Contact Person: _____
 Phone: (_____) _____
 Contact Person Email: _____
 Field Contact Person: _____
 Field Contact Person Phone: (_____) _____

API No. 15- _____
 Spot Description: _____
 _____ - _____ - _____ - _____ Sec. _____ Twp. _____ S. R. _____ E W
 _____ feet from N / S Line of Section
 _____ feet from E / W Line of Section
 GPS Location: Lat: _____, Long: _____
(e.g. xx.xxxxx) (e.g. -xxx.xxxxx)
 Datum: NAD27 NAD83 WGS84
 County: _____ Elevation: _____ GL KB
 Lease Name: _____ Well #: _____
 Well Type: (check one) Oil Gas OG WSW Other: _____
 SWD Permit #: _____ ENHR Permit #: _____
 Gas Storage Permit #: _____
 Spud Date: _____ Date Shut-In: _____

	Conductor	Surface	Production	Intermediate	Liner	Tubing
Size						
Setting Depth						
Amount of Cement						
Top of Cement						
Bottom of Cement						

Casing Fluid Level from Surface: _____ How Determined? _____ Date: _____

Casing Squeeze(s): _____ to _____ w / _____ sacks of cement, _____ to _____ w / _____ sacks of cement. Date: _____
(top) (bottom) (top) (bottom)

Do you have a valid Oil & Gas Lease? Yes No

Depth and Type: Junk in Hole at _____ Tools in Hole at _____ Casing Leaks: Yes No Depth of casing leak(s): _____
(depth) (depth)

Type Completion: ALT. I ALT. II Depth of: DV Tool: _____ w / _____ sacks of cement Port Collar: _____ w / _____ sack of cement
(depth) (depth)

Packer Type: _____ Size: _____ Inch Set at: _____ Feet

Total Depth: _____ Plug Back Depth: _____ Plug Back Method: _____

Geological Data:

Formation Name	Formation Top	Formation Base	Completion Information
1. _____	At: _____	to _____ Feet	Perforation Interval _____ to _____ Feet or Open Hole Interval _____ to _____ Feet
2. _____	At: _____	to _____ Feet	Perforation Interval _____ to _____ Feet or Open Hole Interval _____ to _____ Feet

UNDER PENALTY OF PERJURY I HEREBY ATTEST THAT THE INFORMATION CONTAINED HEREIN IS TRUE AND CORRECT TO THE BEST OF MY KNOWLEDGE

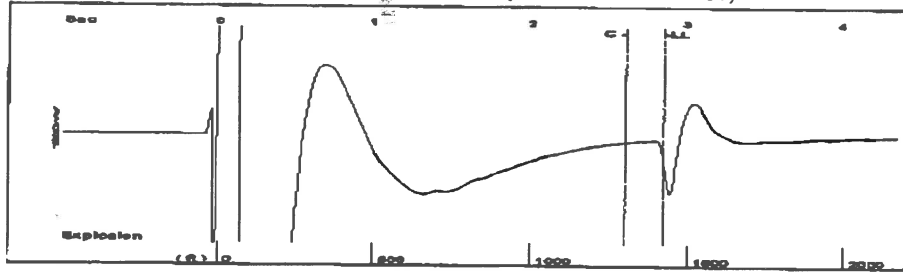
Submitted Electronically

Do NOT Write in This Space - KCC USE ONLY	Date Tested: _____	Results: _____	Date Plugged: _____	Date Repaired: _____	Date Put Back in Service: _____
	Review Completed by: _____ Comments: _____				
TA Approved: <input type="checkbox"/> Yes <input type="checkbox"/> Denied Date: _____					

Mail to the Appropriate KCC Conservation Office:

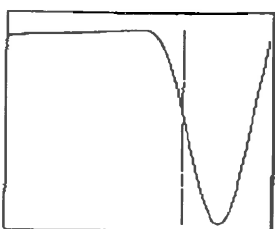
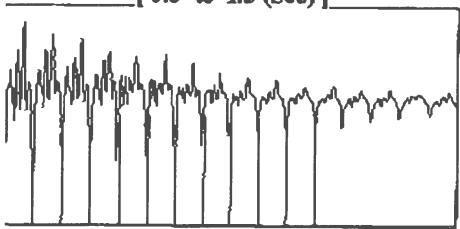
	KCC District Office #1 - 210 E. Frontview, Suite A, Dodge City, KS 67801	Phone 620.225.8888
	KCC District Office #2 / UPGS - 3450 N. Rock Road, Building 600, Suite 601, Wichita, KS 67226	Phone 316.630.4000
	KCC District Office #3 - 1500 SW Seventh Steet, Chanute, KS 66720	Phone 620.432.2300
	KCC District Office #4 - 2301 E. 13th Street, Hays, KS 67601-2651	Phone 785.625.0550

Group: Sawyer Well: Ternes Trust 2-28 (acquired on: 09/23/16 14:14:21)



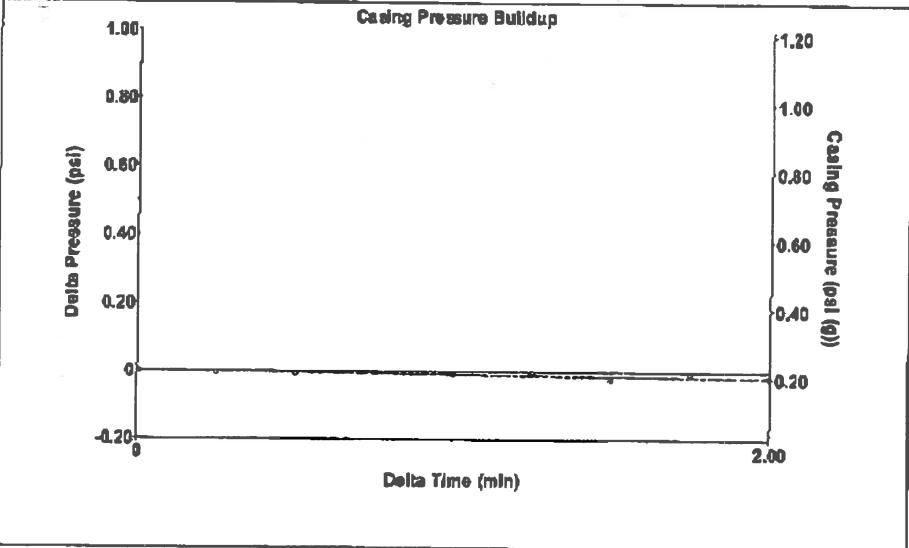
Filter Type High Pass Automatic Collar Count Yes Time 2.858 sec
 Manual Acoustic Velo 994.855 ft/s Manual JTS/sec 16.0772 Joints 45.9408 Jts
 Depth 1421.41 ft

[0.5 to 1.5 (Sec)]



Analysis Method: Automatic

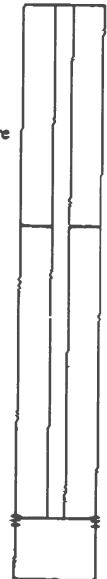
Group: Sawyer Well: Ternes Trust 2-28 (acquired on: 09/23/16 14:14:21)



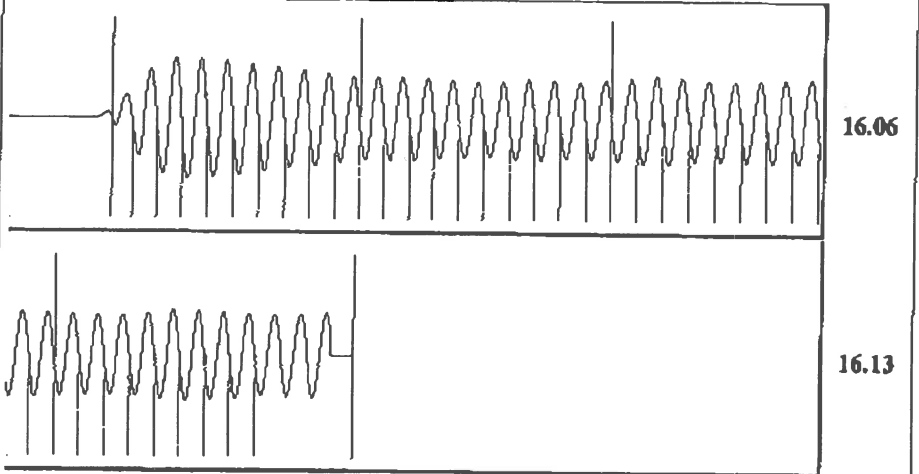
Change in Pressure -0.02 psi PT13440
 Change in Time 2.00 min Range 0 - ? psi

Group: Sawyer Well: Ternes Trust 2-28 (acquired on: 09/23/16 14:14:21)

Production Current	Potential	Casing Pressure	Producing
Oil -.-	-.- BBL/D	0.2 psi (g)	
Water -.-	-.- BBL/D	Casing Pressure Buildup	Annular Gas Flow
Gas -.-	-.- Mscf/D	-0.016 psi	0 Mscf/D
		2.00 min	% Liquid
IPR Method Vogel		Gas/Liquid Interface Pressure	100 %
PBHP/SBHP -.-		1.0 psi (g)	
Production Efficiency 0.0		Liquid Level Depth	
		1421.41 ft	
Oil 40 deg.API		Pump Intake Depth	
Water 1.05 Sp.Gr.H2O		3939.00 ft	
Gas 0.97 Sp.Gr.AIR		Formation Depth	
Acoustic Velocity 994.687 ft/s		3959.00 ft	
		Pump Intake	
		834.1 psi (g)	
Formation Submergence		Producing BHP	
Total Gaseous Liquid Column HT (TVD) 2518 ft		843.2 psi (g)	
Equivalent Gas Free Liquid HT (TVD) 2518 ft		Static BHP	
		-.- psi (g)	



Group: Sawyer Well: Ternes Trust 2-28 (acquired on: 09/23/16 14:14:21)



Acoustic Velocity 994.687 ft/s Joints counted 38
 Joints Per Second 16.0745 jts/sec Joints to liquid level 45.9408
 Depth to liquid level 1421.41 ft Filter Width 14.0772 18.0772
 Automatic Collar Count Yes Time to 1st Collar 0.252 2.616

Conservation Division
District Office No. 1
210 E. Frontview, Suite A
Dodge City, KS 67801



Phone: 620-225-8888
Fax: 620-225-8885
<http://kcc.ks.gov/>

Jay Scott Emler, Chairman
Shari Feist Albrecht, Commissioner
Pat Apple, Commissioner

Sam Brownback, Governor

September 27, 2016

Franklin R. Greenbaum
F. G. Holl Company L.L.C.
9431 E CENTRAL STE 100
WICHITA, KS 67206-2563

Re: Temporary Abandonment
API 15-007-23073-00-00
TERNES TRUST 2-28
NE/4 Sec.28-30S-14W
Barber County, Kansas

Dear Franklin R. Greenbaum:

"Your temporary abandonment (TA) application for the well listed above has been approved. In accordance with K.A.R. 82-3-111 the TA status of this well will expire 09/27/2017.

- * If you return this well to service or plug it, please notify the District Office.
- * If you sell this well you are required to file a Transfer of Operator form, T-1.
- * If the well will remain temporarily abandoned, you must submit a new TA application, CP-111, before 09/27/2017.

You may contact me at the number above if you have questions.

Very truly yours,

Michael Maier"