



TEMPORARY ABANDONMENT WELL APPLICATION

OPERATOR: License# _____
 Name: _____
 Address 1: _____
 Address 2: _____
 City: _____ State: _____ Zip: _____ + _____
 Contact Person: _____
 Phone: (_____) _____
 Contact Person Email: _____
 Field Contact Person: _____
 Field Contact Person Phone: (_____) _____

API No. 15- _____
 Spot Description: _____
 _____ - _____ - _____ - _____ Sec. _____ Twp. _____ S. R. _____ E W
 _____ feet from N / S Line of Section
 _____ feet from E / W Line of Section
 GPS Location: Lat: _____, Long: _____
(e.g. xx.xxxxx) (e.g. -xxx.xxxxx)
 Datum: NAD27 NAD83 WGS84
 County: _____ Elevation: _____ GL KB
 Lease Name: _____ Well #: _____
 Well Type: (check one) Oil Gas OG WSW Other: _____
 SWD Permit #: _____ ENHR Permit #: _____
 Gas Storage Permit #: _____
 Spud Date: _____ Date Shut-In: _____

	Conductor	Surface	Production	Intermediate	Liner	Tubing
Size						
Setting Depth						
Amount of Cement						
Top of Cement						
Bottom of Cement						

Casing Fluid Level from Surface: _____ How Determined? _____ Date: _____
 Casing Squeeze(s): _____ to _____ w / _____ sacks of cement, _____ to _____ w / _____ sacks of cement. Date: _____
(top) (bottom) (top) (bottom)
 Do you have a valid Oil & Gas Lease? Yes No
 Depth and Type: Junk in Hole at _____ Tools in Hole at _____ Casing Leaks: Yes No Depth of casing leak(s): _____
(depth) (depth)
 Type Completion: ALT. I ALT. II Depth of: DV Tool: _____ w / _____ sacks of cement Port Collar: _____ w / _____ sack of cement
(depth) (depth)
 Packer Type: _____ Size: _____ Inch Set at: _____ Feet
 Total Depth: _____ Plug Back Depth: _____ Plug Back Method: _____

Geological Data:

Formation Name	Formation Top	Formation Base	Completion Information
1. _____	At: _____	to _____ Feet	Perforation Interval _____ to _____ Feet or Open Hole Interval _____ to _____ Feet
2. _____	At: _____	to _____ Feet	Perforation Interval _____ to _____ Feet or Open Hole Interval _____ to _____ Feet

UNDER PENALTY OF PERJURY I HEREBY ATTEST THAT THE INFORMATION CONTAINED HEREIN IS TRUE AND CORRECT TO THE BEST OF MY KNOWLEDGE

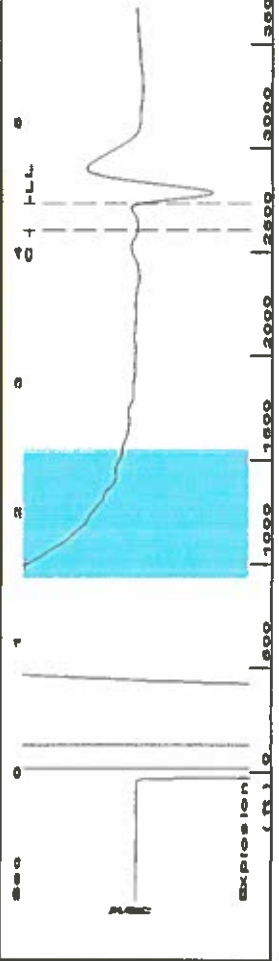
Submitted Electronically

Do NOT Write in This Space - KCC USE ONLY	Date Tested: _____	Results: _____	Date Plugged: _____	Date Repaired: _____	Date Put Back in Service: _____
	Review Completed by: _____ Comments: _____				
TA Approved: <input type="checkbox"/> Yes <input type="checkbox"/> Denied Date: _____					

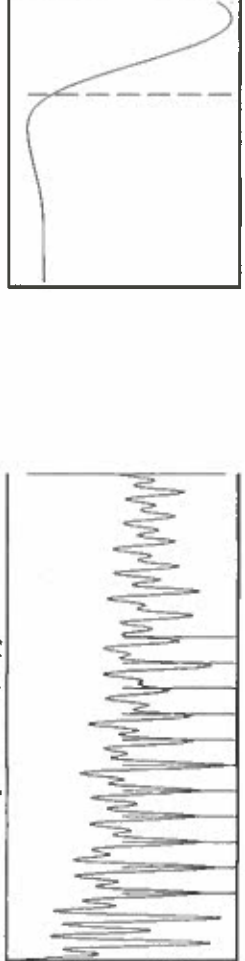
Mail to the Appropriate KCC Conservation Office:

	KCC District Office #1 - 210 E. Frontview, Suite A, Dodge City, KS 67801	Phone 620.225.8888
	KCC District Office #2 - 3450 N. Rock Road, Building 600, Suite 601, Wichita, KS 67226	Phone 316.337.7400
	KCC District Office #3 - 1500 SW Seventh Steet, Chanute, KS 66720	Phone 620.432.2300
	KCC District Office #4 - 2301 E. 13th Street, Hays, KS 67601-2651	Phone 785.625.0550

Group: Oxy Usa Ulysses Wells Well: Cook F-3 (acquired on: 10/13/16 14:20:09)

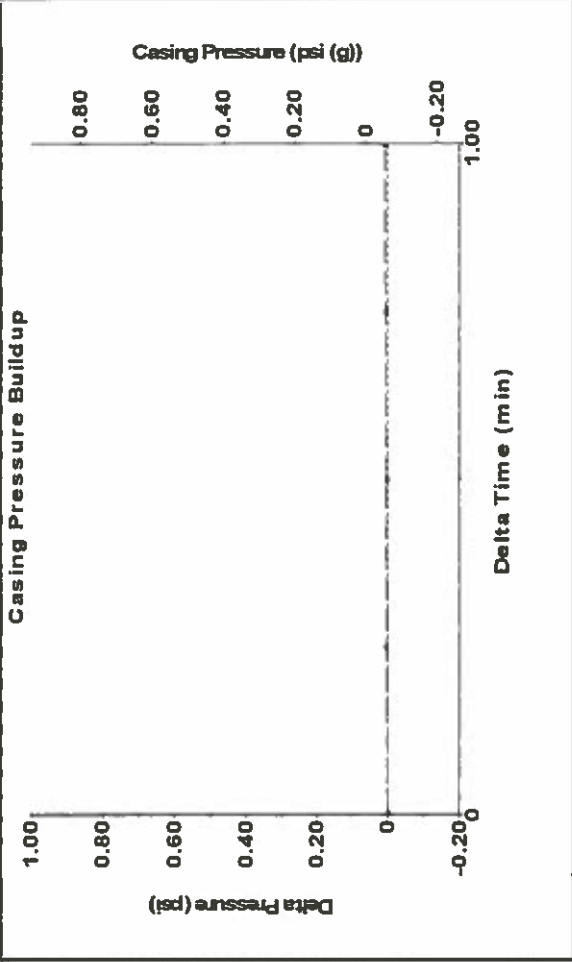


Filter Type High Pass Automatic Collar Count Yes Time 4.377 sec
 Manual Acoustic Vel 1207.62 ft/s Manual JIS/sec 19.0476
 Joints 86.2408 Jts
 Depth 2733.83 ft



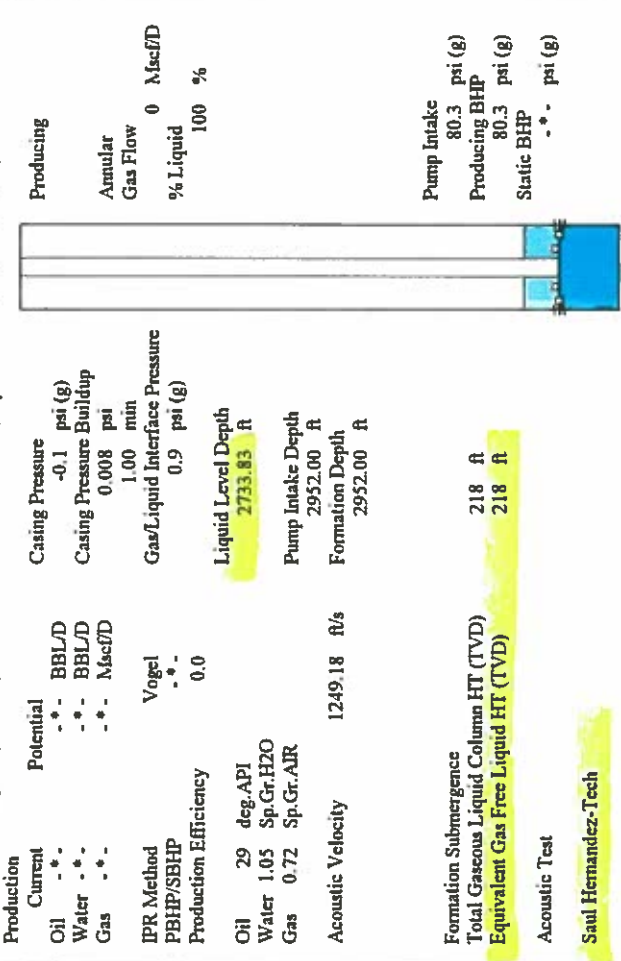
Analysis Method: Automatic

Group: Oxy Usa Ulysses Wells Well: Cook F-3 (acquired on: 10/13/16 14:20:09)



Change in Pressure 0.01 psi PT8197 Range
 Change in Time 1.00 min

Group: Oxy Usa Ulysses Wells Well: Cook F-3 (acquired on: 10/13/16 14:20:09)



Production
 Current Potential
 Oil - * - BBL/D
 Water - * - BBL/D
 Gas - * - Mscf/D
 IPR Method Vogel
 PBHP/SBHP - * -
 Production Efficiency 0.0
 Oil 29 deg API
 Water 1.05 Sp.Gr.H2O
 Gas 0.72 Sp.Gr.AIR
 Acoustic Velocity 1249.18 ft/s
 Formation Submergence
 Total Gaseous Liquid Column HT (TVD) 218 ft
 Equivalent Gas Free Liquid HT (TVD) 218 ft
 Acoustic Test
 Saul Hernandez-Tech

Producing
 Annular Gas Flow 0 Mscf/D
 % Liquid 100 %
 Pump Intake 80.3 psi (g)
 Producing BHP 80.3 psi (g)
 Static BHP - * - psi (g)

Casing Pressure -0.1 psi (g)
 Casing Pressure Buildup 0.008 psi
 Gas/Liquid Interface Pressure 1.00 min
 0.9 psi (g)
 Liquid Level Depth 2733.83 ft
 Pump Intake Depth 2952.00 ft
 Formation Depth 2952.00 ft

Conservation Division
District Office No. 1
210 E. Frontview, Suite A
Dodge City, KS 67801



Phone: 620-225-8888
Fax: 620-225-8885
<http://kcc.ks.gov/>

Jay Scott Emler, Chairman
Shari Feist Albrecht, Commissioner
Pat Apple, Commissioner

Sam Brownback, Governor

October 18, 2016

Katherine McClurkan
Merit Energy Company, LLC
13727 Noel Road, Suite 1200
Dallas, TX 75240

Re: Temporary Abandonment
API 15-067-21161-00-00
Cook F 3
SE/4 Sec.25-27S-35W
Grant County, Kansas

Dear Katherine McClurkan:

"Your temporary abandonment (TA) application for the well listed above has been approved. In accordance with K.A.R. 82-3-111 the TA status of this well will expire 10/18/2017.

- * If you return this well to service or plug it, please notify the District Office.
- * If you sell this well you are required to file a Transfer of Operator form, T-1.
- * If the well will remain temporarily abandoned, you must submit a new TA application, CP-111, before 10/18/2017.

You may contact me at the number above if you have questions.

Very truly yours,

Michael Maier"