



# TEMPORARY ABANDONMENT WELL APPLICATION

OPERATOR: License# \_\_\_\_\_  
 Name: \_\_\_\_\_  
 Address 1: \_\_\_\_\_  
 Address 2: \_\_\_\_\_  
 City: \_\_\_\_\_ State: \_\_\_\_\_ Zip: \_\_\_\_\_ + \_\_\_\_\_  
 Contact Person: \_\_\_\_\_  
 Phone: ( \_\_\_\_\_ ) \_\_\_\_\_  
 Contact Person Email: \_\_\_\_\_  
 Field Contact Person: \_\_\_\_\_  
 Field Contact Person Phone: ( \_\_\_\_\_ ) \_\_\_\_\_

API No. 15- \_\_\_\_\_  
 Spot Description: \_\_\_\_\_  
 \_\_\_\_\_ - \_\_\_\_\_ - \_\_\_\_\_ - \_\_\_\_\_ Sec. \_\_\_\_\_ Twp. \_\_\_\_\_ S. R. \_\_\_\_\_  E  W  
 \_\_\_\_\_ feet from  N /  S Line of Section  
 \_\_\_\_\_ feet from  E /  W Line of Section  
 GPS Location: Lat: \_\_\_\_\_, Long: \_\_\_\_\_  
(e.g. xx.xxxxx) (e.g. -xxx.xxxxx)  
 Datum:  NAD27  NAD83  WGS84  
 County: \_\_\_\_\_ Elevation: \_\_\_\_\_  GL  KB  
 Lease Name: \_\_\_\_\_ Well #: \_\_\_\_\_  
 Well Type: (check one)  Oil  Gas  OG  WSW  Other: \_\_\_\_\_  
 SWD Permit #: \_\_\_\_\_  ENHR Permit #: \_\_\_\_\_  
 Gas Storage Permit #: \_\_\_\_\_  
 Spud Date: \_\_\_\_\_ Date Shut-In: \_\_\_\_\_

	Conductor	Surface	Production	Intermediate	Liner	Tubing
Size						
Setting Depth						
Amount of Cement						
Top of Cement						
Bottom of Cement						

Casing Fluid Level from Surface: \_\_\_\_\_ How Determined? \_\_\_\_\_ Date: \_\_\_\_\_

Casing Squeeze(s): \_\_\_\_\_ to \_\_\_\_\_ w / \_\_\_\_\_ sacks of cement, \_\_\_\_\_ to \_\_\_\_\_ w / \_\_\_\_\_ sacks of cement. Date: \_\_\_\_\_  
(top) (bottom) (top) (bottom)

Do you have a valid Oil & Gas Lease?  Yes  No

Depth and Type:  Junk in Hole at \_\_\_\_\_  Tools in Hole at \_\_\_\_\_ Casing Leaks:  Yes  No Depth of casing leak(s): \_\_\_\_\_  
(depth) (depth)

Type Completion:  ALT. I  ALT. II Depth of:  DV Tool: \_\_\_\_\_ w / \_\_\_\_\_ sacks of cement  Port Collar: \_\_\_\_\_ w / \_\_\_\_\_ sack of cement  
(depth) (depth)

Packer Type: \_\_\_\_\_ Size: \_\_\_\_\_ Inch Set at: \_\_\_\_\_ Feet

Total Depth: \_\_\_\_\_ Plug Back Depth: \_\_\_\_\_ Plug Back Method: \_\_\_\_\_

**Geological Data:**

Formation Name	Formation Top	Formation Base	Completion Information
1. _____	At: _____	to _____ Feet	Perforation Interval _____ to _____ Feet or Open Hole Interval _____ to _____ Feet
2. _____	At: _____	to _____ Feet	Perforation Interval _____ to _____ Feet or Open Hole Interval _____ to _____ Feet

UNDER PENALTY OF PERJURY I HEREBY ATTEST THAT THE INFORMATION CONTAINED HEREIN IS TRUE AND CORRECT TO THE BEST OF MY KNOWLEDGE

Submitted Electronically

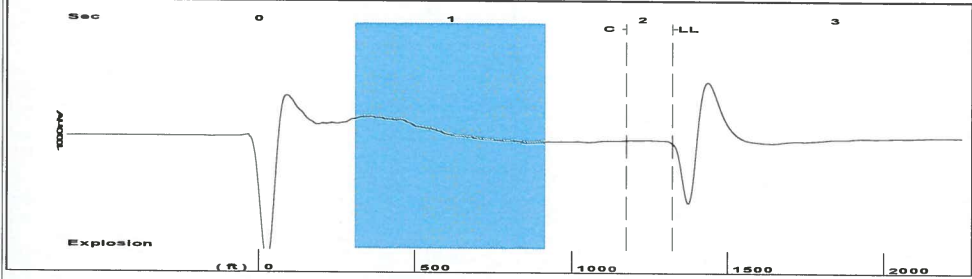
<b>Do NOT Write in This Space - KCC USE ONLY</b>	Date Tested: _____	Results: _____	Date Plugged: _____	Date Repaired: _____	Date Put Back in Service: _____
	Review Completed by: _____ Comments: _____				
TA Approved: <input type="checkbox"/> Yes <input type="checkbox"/> Denied Date: _____					

**Mail to the Appropriate KCC Conservation Office:**

	KCC District Office #1 - 210 E. Frontview, Suite A, Dodge City, KS 67801	Phone 620.225.8888
	KCC District Office #2 - 3450 N. Rock Road, Building 600, Suite 601, Wichita, KS 67226	Phone 316.337.7400
	KCC District Office #3 - 1500 SW Seventh Steet, Chanute, KS 66720	Phone 620.432.2300
	KCC District Office #4 - 2301 E. 13th Street, Hays, KS 67601-2651	Phone 785.625.0550

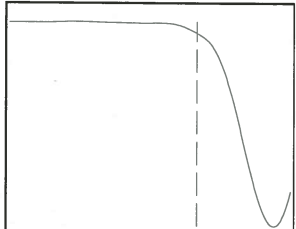
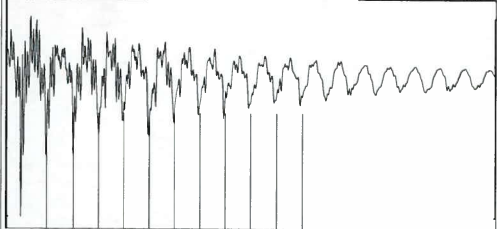
**Shot @ 300psi**

Group: SATANA TA'D Well: YUNKER 4-14 (acquired on: 10/25/16 14:24:44)



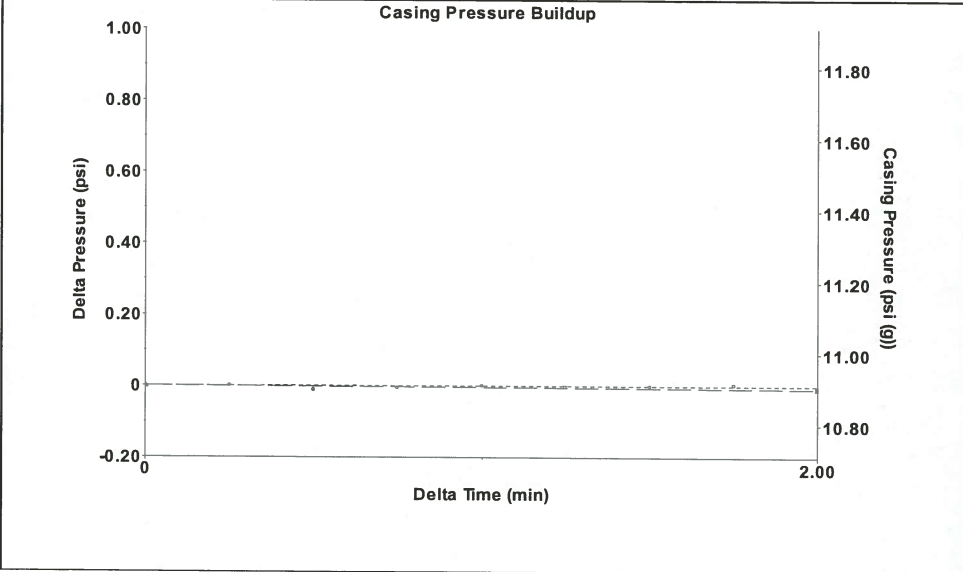
Filter Type	High Pass	Automatic Collar Count	Yes	Time	2.158 sec
Manual Acoustic Velo	1214.56 ft/s	Manual JTS/sec	19.1571	Joints	41.8015 Jts
				Depth	1325.11 ft

[ 0.5 to 1.5 (Sec) ]



**Analysis Method: Automatic**

Group: SATANA TA'D Well: YUNKER 4-14 (acquired on: 10/25/16 14:24:44)

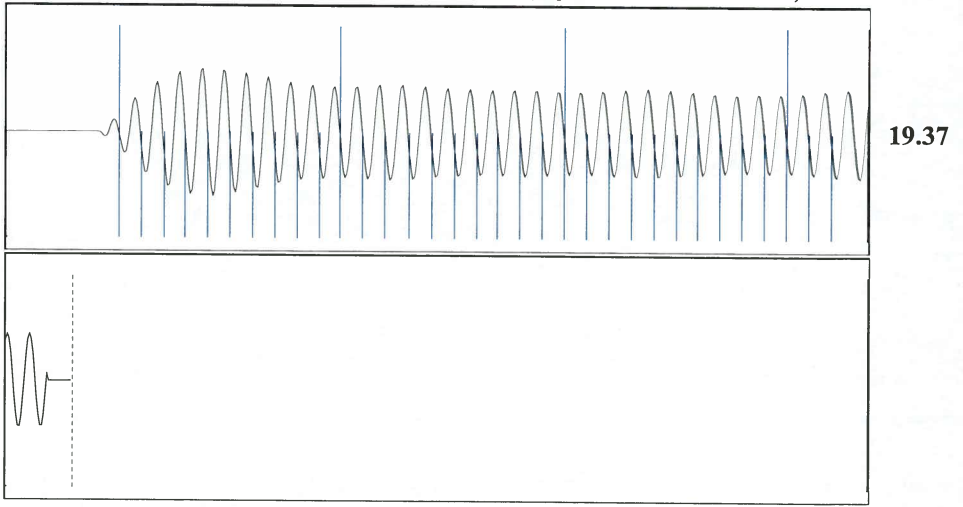


Change in Pressure	-0.01 psi	PT 9880	
Change in Time	2.00 min	Range	0 - ? psi

Group: SATANA TA'D Well: YUNKER 4-14 (acquired on: 10/25/16 14:24:44)

<b>Production Current</b>	<b>Potential</b>	<b>Casing Pressure</b>	<b>Producing</b>
Oil -*- BBL/D	-*- BBL/D	10.9 psi (g)	
Water -*- BBL/D	-*- BBL/D	Casing Pressure Buildup	Annular Gas Flow
Gas -*- Mscf/D	-*- Mscf/D	-0.008 psi	0 Mscf/D
		2.00 min	% Liquid
		Gas/Liquid Interface Pressure	100 %
		11.8 psi (g)	
<b>IPR Method</b>	<b>Vogel</b>	<b>Liquid Level Depth</b>	
PBHP/SBHP	-*-	1325.11 ft	
Production Efficiency	0.0		
		<b>Pump Intake Depth</b>	
Oil 40 deg.API		4298.00 ft	
Water 1.05 Sp.Gr.H2O		<b>Formation Depth</b>	
Gas 0.75 Sp.Gr.AIR		5520.00 ft	
<b>Acoustic Velocity</b>	<b>1228.09 ft/s</b>		
		<b>Pump Intake</b>	
		995.8 psi (g)	
<b>Formation Submergence</b>		<b>Producing BHP</b>	
Total Gaseous Liquid Column HT (TVD)	2973 ft	1551.4 psi (g)	
Equivalent Gas Free Liquid HT (TVD)	2973 ft	<b>Static BHP</b>	
		-*- psi (g)	
<b>Acoustic Test</b>			

Group: SATANA TA'D Well: YUNKER 4-14 (acquired on: 10/25/16 14:24:44)



Acoustic Velocity	1228.09 ft/s	Joints counted	32
Joints Per Second	19.3705 jts/sec	Joints to liquid level	41.8015
Depth to liquid level	1325.11 ft	Filter Width	17.1571
Automatic Collar Count	Yes	Time to 1st Collar	0.264
			21.1571
			1.916

Conservation Division  
District Office No. 1  
210 E. Frontview, Suite A  
Dodge City, KS 67801



Phone: 620-225-8888  
Fax: 620-225-8885  
<http://kcc.ks.gov/>

Jay Scott Emler, Chairman  
Shari Feist Albrecht, Commissioner  
Pat Apple, Commissioner

Sam Brownback, Governor

November 01, 2016

Katherine McClurkan  
Merit Energy Company, LLC  
13727 Noel Road, Suite 1200  
Dallas, TX 75240

Re: Temporary Abandonment  
API 15-081-20224-00-02  
Yuncker 4-14  
NW/4 Sec.14-29S-34W  
Haskell County, Kansas

Dear Katherine McClurkan:

Your application for Temporary Abandonment (TA) for the above-listed well is denied for the following reasons(s):

**Shut-in Over 10 years**

Pursuant to K.A.R. 82-3-111, the well must be plugged or returned to service by November 29, 2016.

If you wish to instead file an application for an exception to the 10-year limitation of K.A.R. 82-3-111, demonstrating why it is necessary to TA the well for more than 10 years, then you must file the application for an exception by November 29, 2016.

**This deadline does NOT override any compliance deadline given to you in any Commission Order.**

You may contact me if you have any questions.

Sincerely,  
Michael Maier  
KCC DISTRICT 1