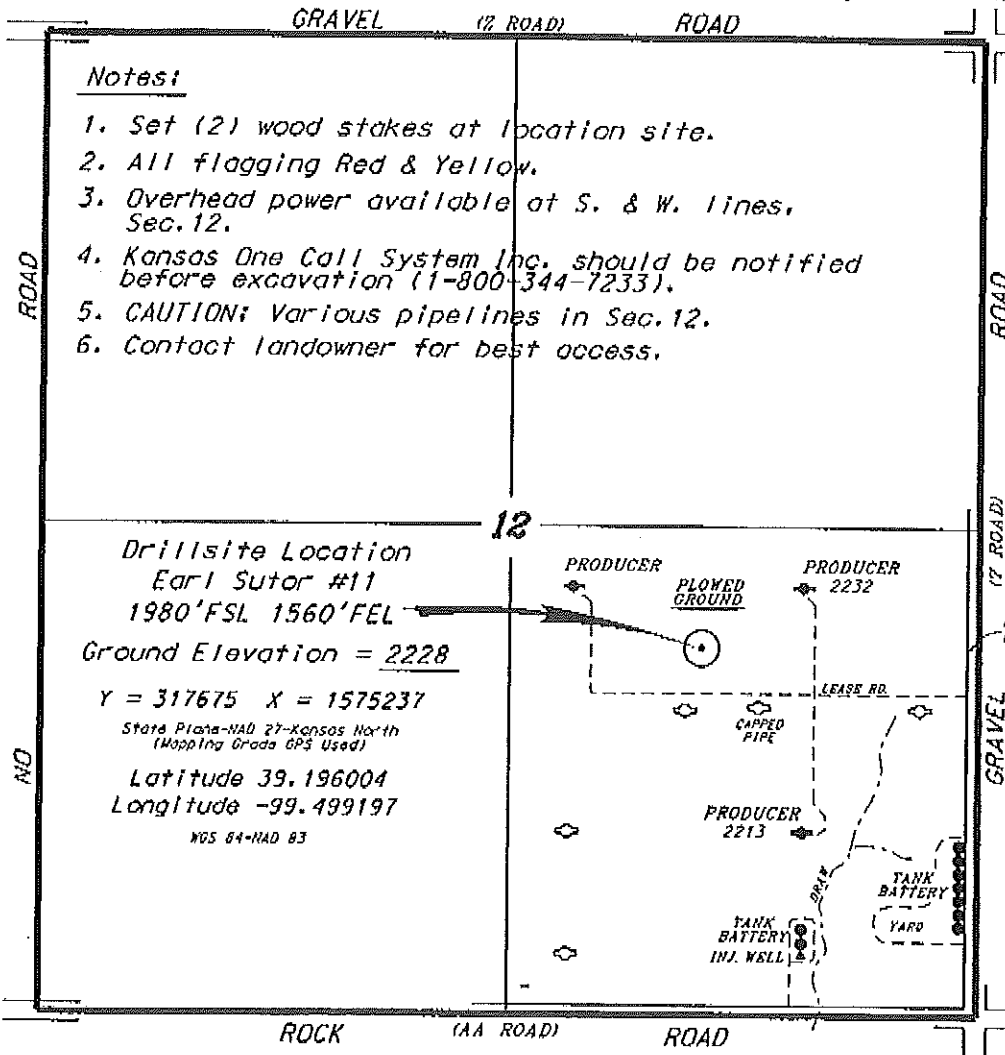


**VESS OIL CORPORATION
EARL SUTOR LEASE
SE. 1/4, SECTION 12, T10S, R20W
ROOKS COUNTY, KANSAS**

Directions:

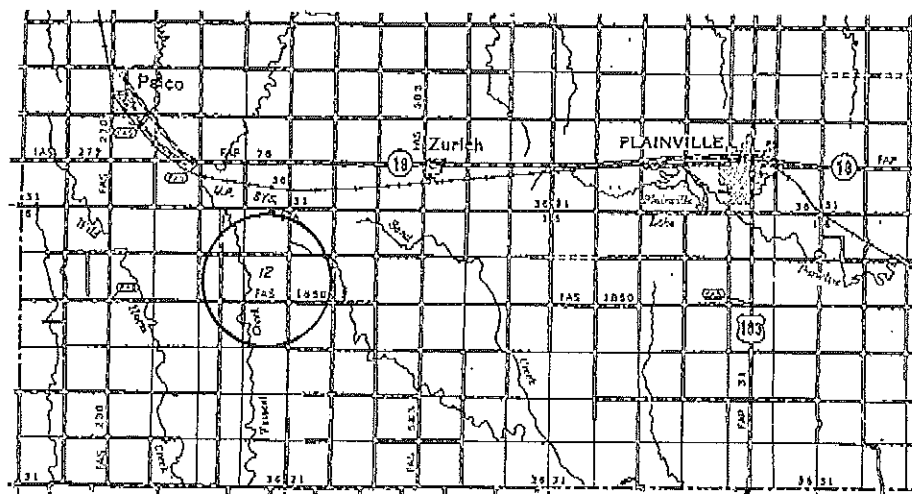
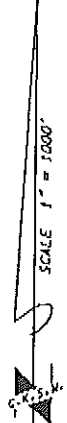
From the intersection of Highway 183 and Highway 18 (in Plainville, Kansas) go 10.5 miles West on Highway 18, then go 2.0 miles South to the NE corner of Section 12, then go 0.62 miles South to a flag on the west edge of road, then go 0.29 miles West to location.



Notes:

1. Set (2) wood stakes at location site.
2. All flagging Red & Yellow.
3. Overhead power available at S. & W. lines, Sec. 12.
4. Kansas One Call System Inc. should be notified before excavation (1-800-344-7233).
5. CAUTION: Various pipelines in Sec. 12.
6. Contact landowner for best access.

*Ingress and egress to location as shown on this plan is per usage only and may not be legally opened for public use. Contact landowner, tenant and county road department for access.



• Controlling data is based upon the best maps and photographs available to us and upon a regular section of land containing 640 acres.
 • Section lines were determined using the normal standards of care of oilfield surveyors practicing in the state of Kansas. The section corners, which establish the precise section lines, were not necessarily located, and the exact location of the drillsite location in the section is not guaranteed. Therefore, the operator accepting this service and accepting this plot and all other parties relying thereon agree to hold Central Kansas Oilfield Services, Inc., its officers and employees harmless from all losses, costs and expenses and said parties released from any liability from incidental or consequential damages.
 * Elevations derived from National Geodetic Vertical Datum.

Date September 1, 2016

