

Scale 1:240 (5"=100') Imperial  
Measured Depth Log

Well Name: Shallow River 1A  
API #: 15-109-21465  
Location: NW - SE - SE - NW of Section 26 T2s R33W  
License Number: 34917  
Spud Date: 8-22-2016  
Surface Coordinates: 2190' FNL, 820' FWL  
Bottom Hole Coordinates: Same as surface  
Ground Elevation (ft): 3083' K.B. Elevation (ft): 3093'  
Logged Interval (ft): 3500' To: 4740' Total Depth (ft): 4740'  
Formation: Mississippian @ Total Depth  
Type of Drilling Fluid: Chemical Drispac (Mucro-Reid Atwell)  
Printed by MudLog from WellSight Systems 1-800-447-1534 www.WellSight.com

OPERATOR

Company: Bickie Energies, LLC  
Address: Attn: Matt Bickie  
P.O. BOX 816  
Hays, KS 67601

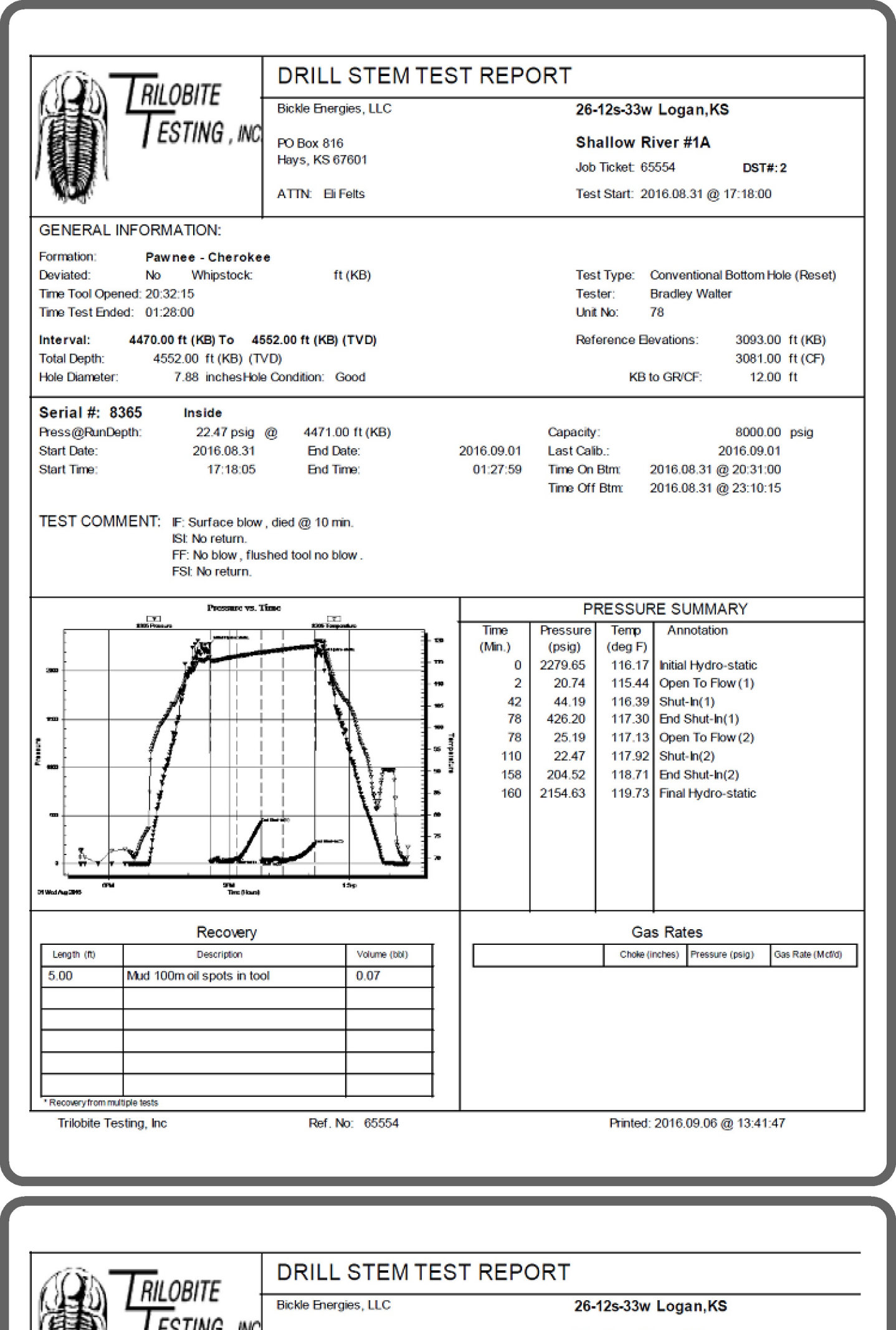
GEOLOGIST

Name: Eli J. Felts  
Company: Peterra Energy Services  
Address: 7701 Kenoggy Drive  
Suite #625  
Wichita, KS 67207

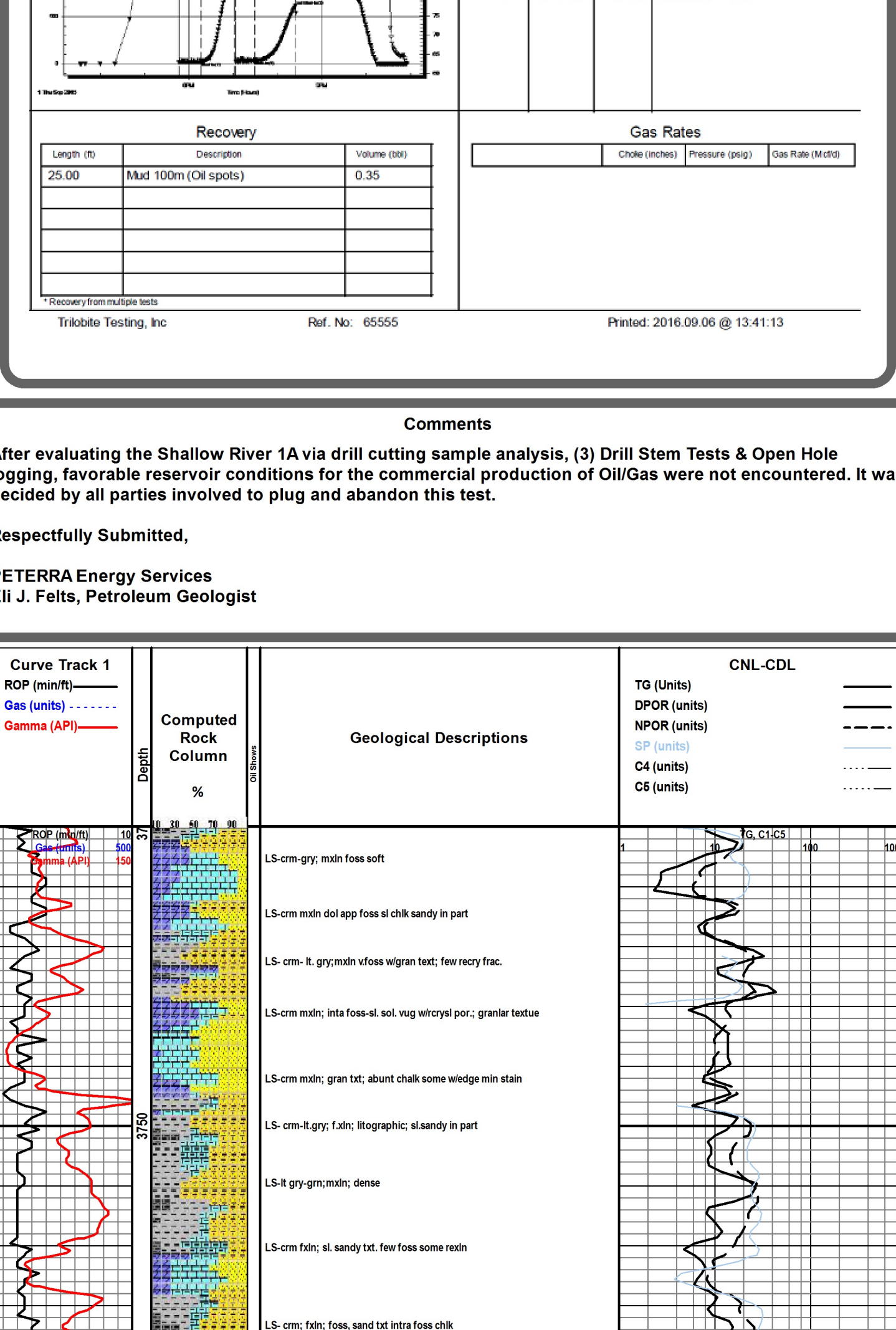
MORNING DRILLING REPORT For Bickie Energies, LLC. Includes well name, location, license, and a detailed log table with columns for depth, formation, and various measurements.

REFERENCE WELLS E-LOG TOPS. Table with columns for Formation, Depth (ft), and E-Log Top (ft). Lists various geological formations and their corresponding depths.

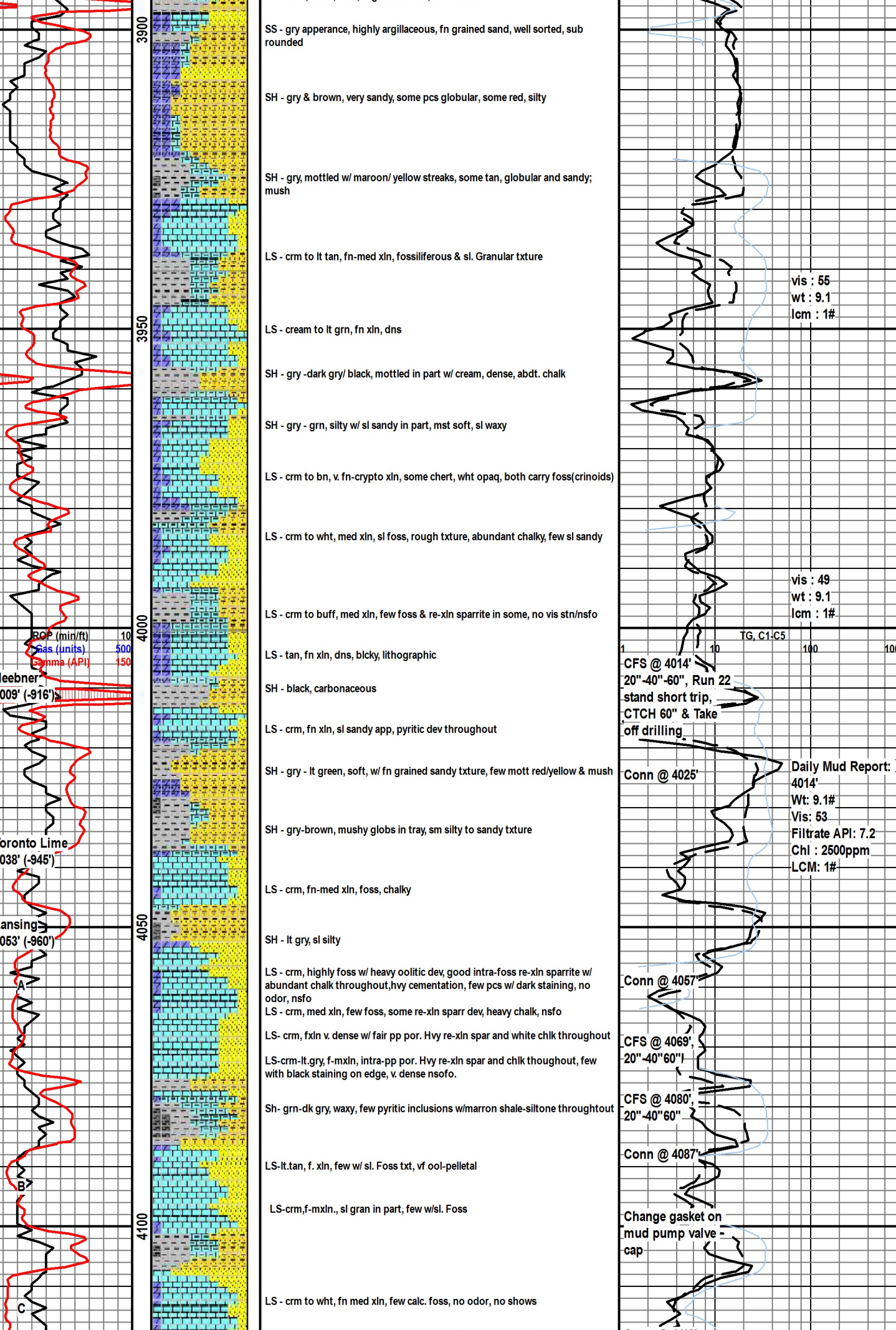
DRILL STEM TEST REPORT. Includes well name (Shallow River #1A), location (26-12s-33w Logan, KS), and test details (Date: 2016.08.29, Time: 16:24:05).



DRILL STEM TEST REPORT. Includes well name (Shallow River #1A), location (26-12s-33w Logan, KS), and test details (Date: 2016.08.31, Time: 17:18:00).



DRILL STEM TEST REPORT. Includes well name (Shallow River #1A), location (26-12s-33w Logan, KS), and test details (Date: 2016.09.01, Time: 15:33:00).



After the Shallow River 1A via drill cutting sample analysis, (3) Drill Stem Tests & Open Hole logging, favorable reservoir conditions for the commercial production of Oil/Gas were not encountered. It was decided by all parties involved to plug and abandon this test. Respectfully Submitted, PETERRA Energy Services, Eli J. Felts, Petroleum Geologist.

