



TRILOBITE TESTING, INC

DRILL STEM TEST REPORT

Culbreath Oil And Gas Comp.Inc.

28-11s-32 Logan Co. KS

3501 S Yale Ave.
Tulsa Ok
74135
ATTN: Richard Bell

H Dreiling Trust2 28

Job Ticket: 64600 **DST#: 3**
Test Start: 2016.08.12 @ 13:46:15

GENERAL INFORMATION:

Formation: **Johnson**
 Deviated: No Whipstock: ft (KB)
 Time Tool Opened: 15:53:00
 Time Test Ended: 19:43:45
 Interval: **4605.00 ft (KB) To 4650.00 ft (KB) (TVD)**
 Total Depth: 4650.00 ft (KB) (TVD)
 Hole Diameter: 7.88 inches Hole Condition: Fair
 Test Type: Conventional Bottom Hole (Reset)
 Tester: Mike Roberts
 Unit No: 81
 Reference Elevations: 3073.00 ft (KB)
 3063.00 ft (CF)
 KB to GR/CF: 10.00 ft

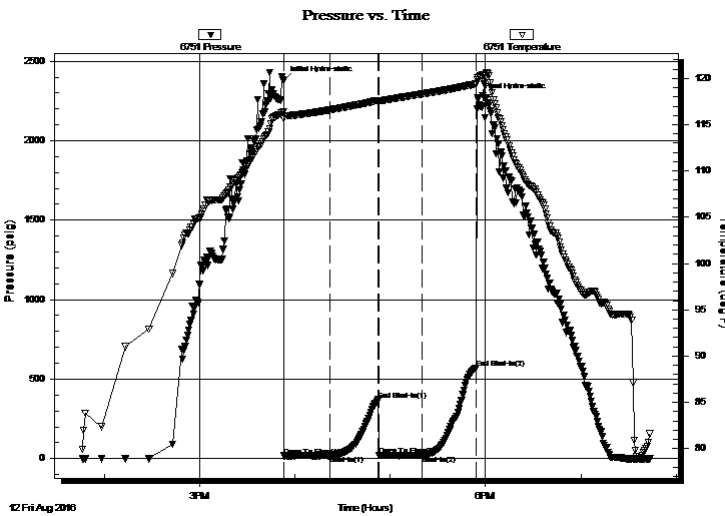
Serial #: 6751

Outside

Press@RunDepth: 19.09 psig @ 4611.00 ft (KB) Capacity: 8000.00 psig
 Start Date: 2016.08.12 End Date: 2016.08.12 Last Calib.: 2016.08.12
 Start Time: 13:46:15 End Time: 19:43:45 Time On Btm: 2016.08.12 @ 15:52:45
 Time Off Btm: 2016.08.12 @ 17:55:00

TEST COMMENT: IF:Weak blow that died instantly
 IS:No return blow
 FF:No blow
 FS:No return blow

PRESSURE SUMMARY



Time (Min.)	Pressure (psig)	Temp (deg F)	Annotation
0	2378.74	116.41	Initial Hydro-static
1	16.90	115.67	Open To Flow (1)
30	18.17	116.60	Shut-In(1)
60	369.67	117.63	End Shut-In(1)
61	18.71	117.52	Open To Flow (2)
88	19.09	118.31	Shut-In(2)
121	567.92	119.37	End Shut-In(2)
123	2268.41	120.04	Final Hydro-static

Recovery

Length (ft)	Description	Volume (bbl)
5.00	mud w ith oil spots 100%m	0.07

* Recovery from multiple tests

Gas Rates

Choke (inches)	Pressure (psig)	Gas Rate (Mcf/d)

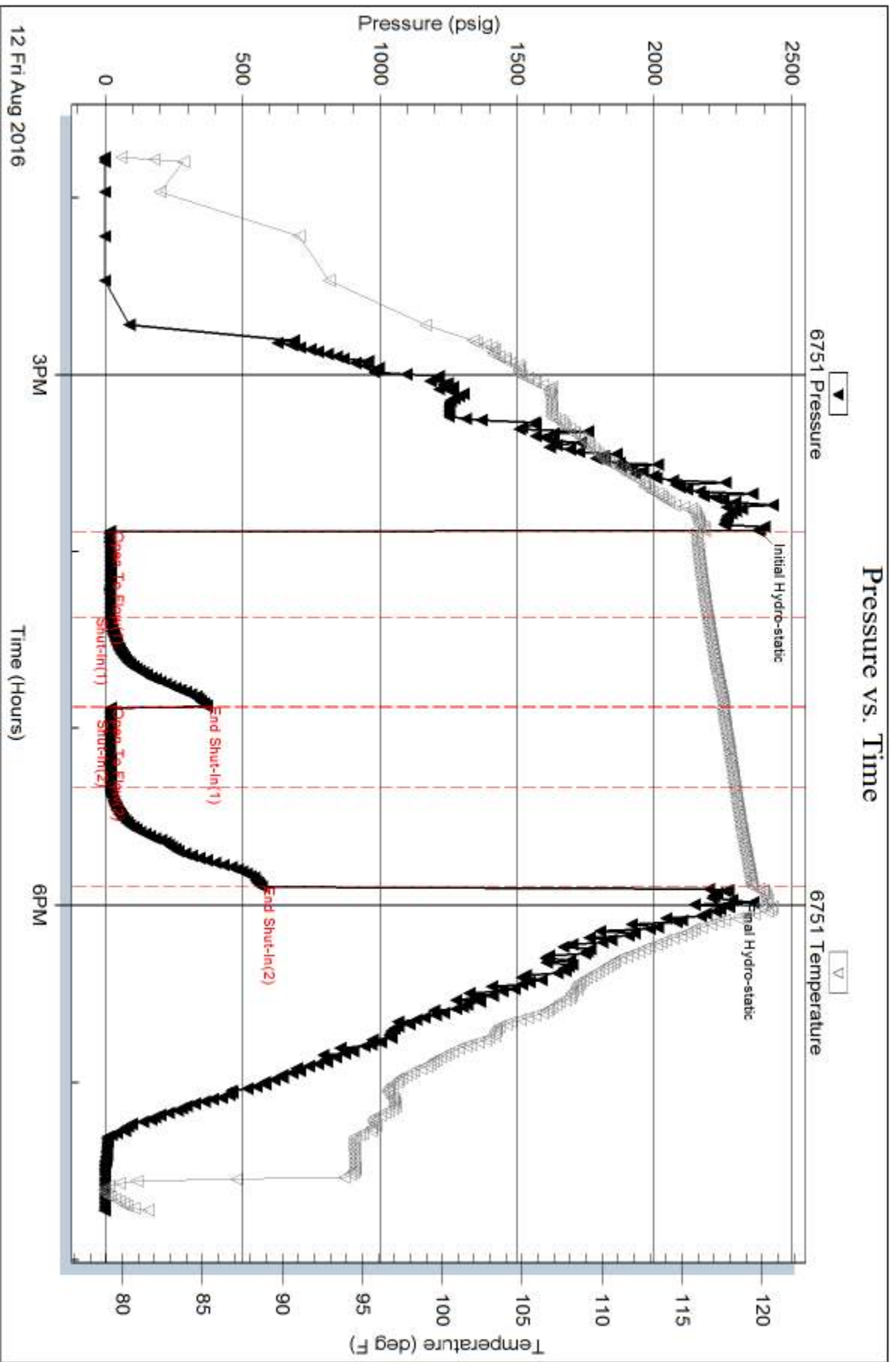
Serial #: 6751

Outside Culbreath Oil And Gas Comp, Inc.

H Drilling Trust 2 28

DST Test Number: 3

Pressure vs. Time



Trilobite Testing, Inc

Ref. No: 64600

Printed: 2016.08.13 @ 09:13:28

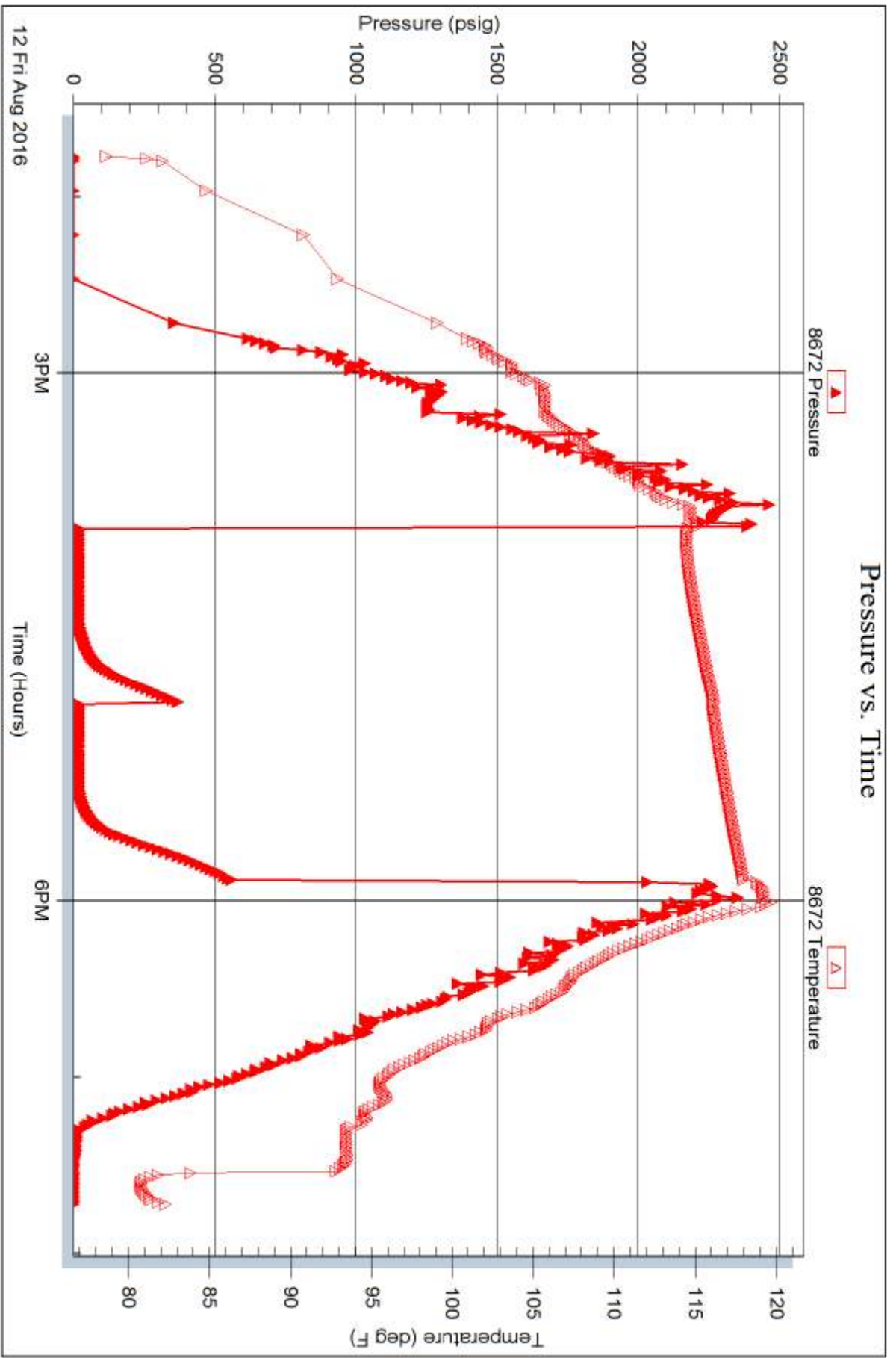
Serial #: 8672

Inside

Culbreath Oil And Gas Comp, Inc.

H Drilling Trust 28

DST Test Number: 3



Trilobite Testing, Inc

Ref. No: 64600

Printed: 2016.08.13 @ 09:13:28