

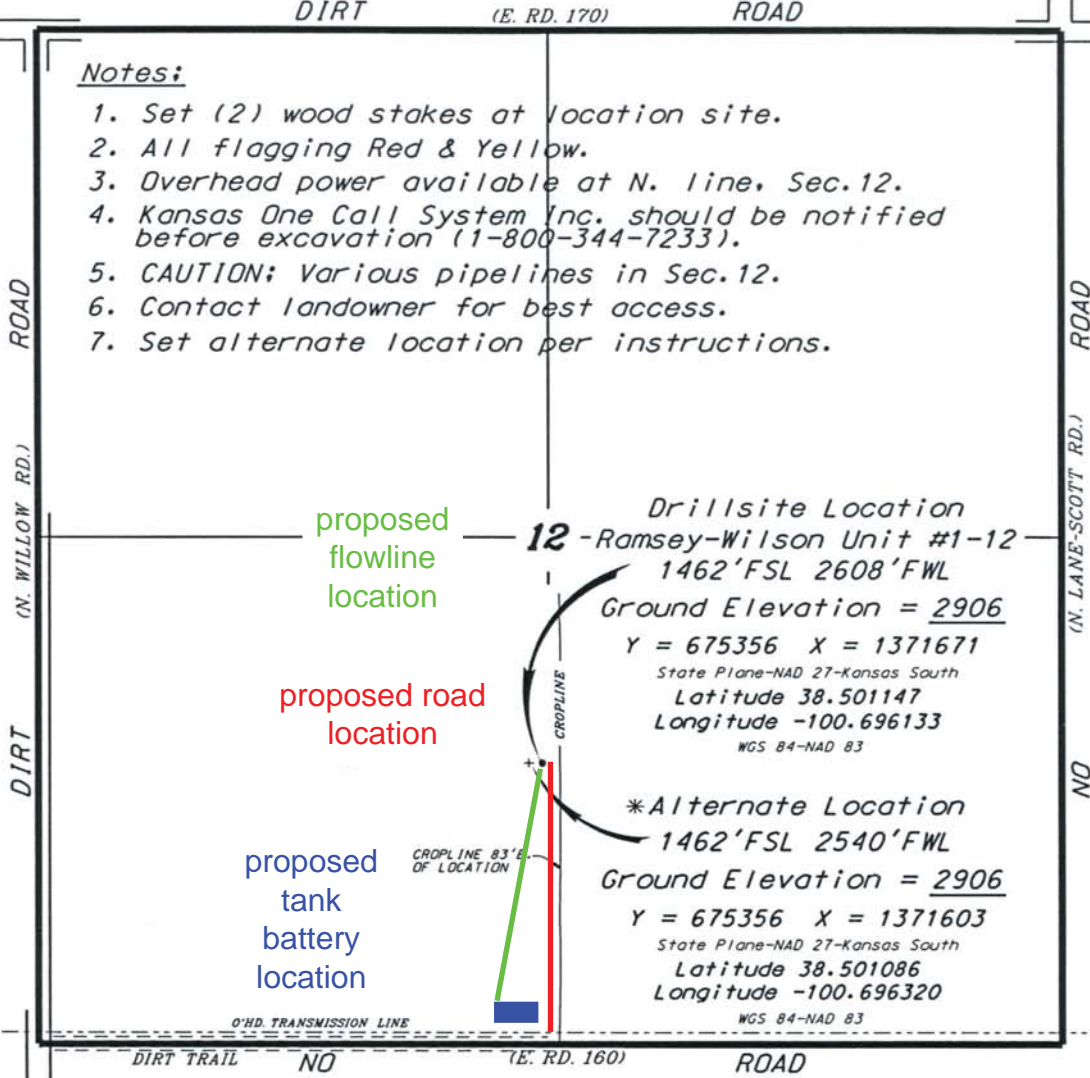
LARSON ENGINEERING, INC.  
 RAMSEY-WILSON LEASE  
 S. 1/2, SECTION 12, T18S, R31W  
 SCOTT COUNTY, KANSAS

DIRT (E. RD. 170) ROAD

**Notes:**

1. Set (2) wood stakes at location site.
2. All flagging Red & Yellow.
3. Overhead power available at N. line. Sec. 12.
4. Kansas One Call System Inc. should be notified before excavation (1-800-344-7233).
5. CAUTION: Various pipelines in Sec. 12.
6. Contact landowner for best access.
7. Set alternate location per instructions.

\*Ingress and egress to location as shown on this plat is per usage only and may not be legally opened for public use. Contact landowner, tenant and county road department for access.



**Drillsite Location**  
 12 - Ramsey-Wilson Unit #1-12  
 1462'FSL 2608'FWL  
 Ground Elevation = 2906  
 Y = 675356 X = 1371671  
 State Plane-NAD 27-Kansas South  
 Latitude 38.501147  
 Longitude -100.696133  
 WGS 84-NAD 83

**\*Alternate Location**  
 1462'FSL 2540'FWL  
 Ground Elevation = 2906  
 Y = 675356 X = 1371603  
 State Plane-NAD 27-Kansas South  
 Latitude 38.501086  
 Longitude -100.696320  
 WGS 84-NAD 83



\* Controlling data is based upon the best maps and photographs available to us and upon a regular section of land containing 640 acres.  
 \* Approximate section lines were determined using the normal standard of care of oilfield surveyors practicing in the state of Kansas. The section corners, which establish the precise section lines, were not necessarily located, and the exact location of the drillsite location in the section is not guaranteed. Therefore, the operator securing this service and accepting this plat and all other parties relying thereon agree to hold Central Kansas Oilfield Services, Inc., its officers and employees harmless from all losses, costs and expenses and said entities released from any liability from incidental or consequential damages.  
 \* Elevations derived from National Geodetic Vertical Datum.

Date August 3, 2016