

ADVANTAGE ELEVATIONS

OIL FIELD SURVEYORS

BOX 8604 - PRATT, KS 67124
(620) 672-6491

97161

INVOICE NO.

MURFIN DRILLING CO. INC
OPERATOR

2-2
NO.

RANK

FARM

STAFFORD
COUNTY

2 23s 12w
S T R

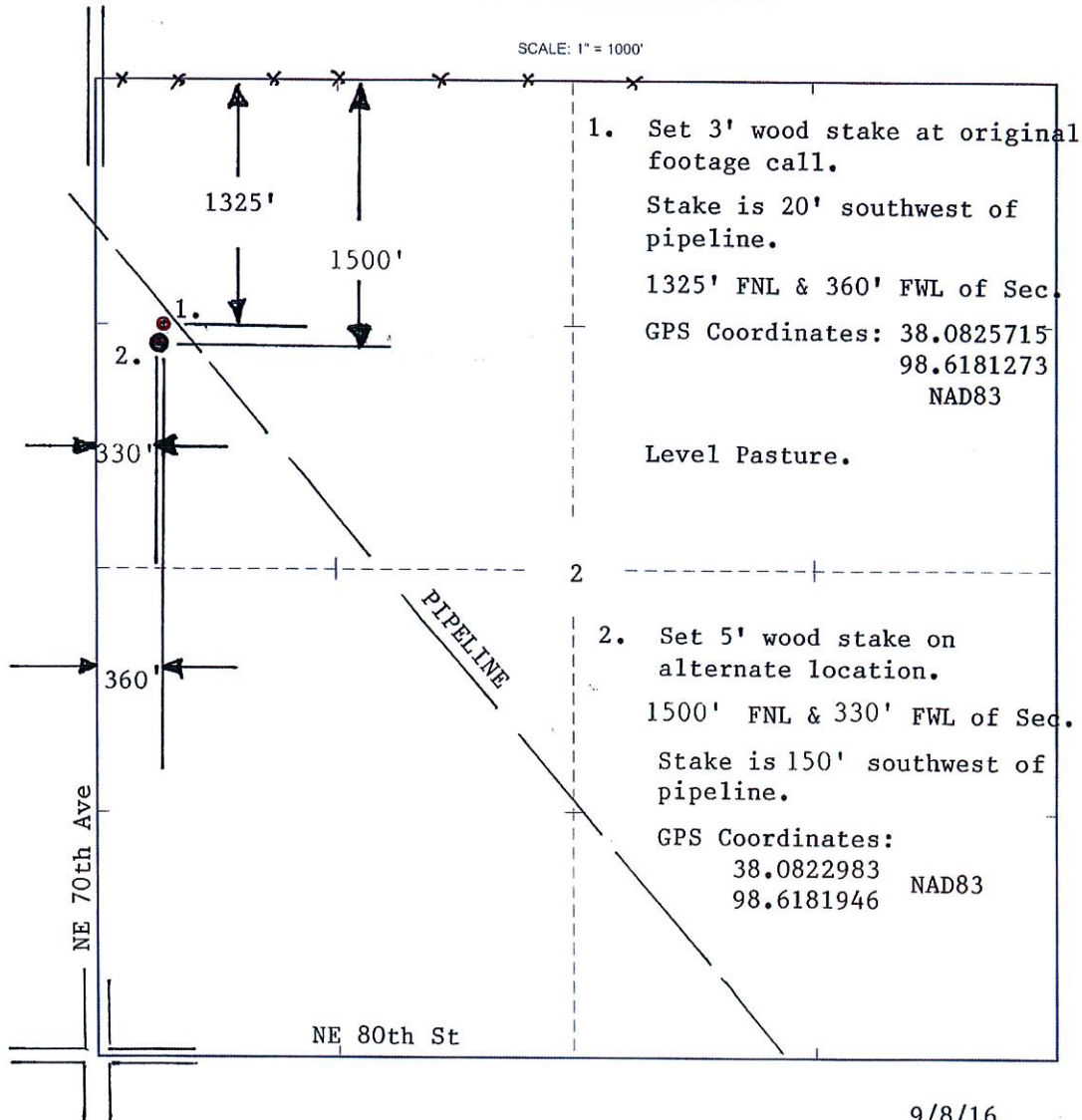
1500' FNL & 330' FWL of Sec
LOCATION

ELEVATION: 1829' GR



MURFIN DRILLING CO INC
250 N WATER, SUITE 300
WICHITA, KS 67202

AUTHORIZED BY: Sarah Kersetter



DATE STAKED: 9/8/16