



Depend on US

Post Job Report

Merit Energy

GCCU 404W

4/9/2015

5.5" 2-Stage Production Casing

Haskell County, KS





Table of Contents:

1.0 Executive Summary.....3

2.0 Job Summary.....4

 2.1 Job Event Log.....4

 2.2 Job Chart.....6

3.0 Water Testing.....8

4.0 Customer Satisfaction Survey.....9



1.0 Executive Summary

Allied Oil & Gas Services would like to thank you for the award of the provision of cementing products and services on the well GCCU 404W intermediate casing.

A pre-job meeting was held to discuss job details, review the safety hazards, potential environmental impact and established emergency procedures.

Allied started the job testing lines to 3000 psi. After a successful test we began the job by plugging the rat hole and mouse hole with 50 sacks and then began pumping 12 bbls of HiVis Sweep spacer. We then mixed and pumped the following cements:

1st Stage:

28.67 bbl	100 Sacks of 13.6 ppg
50/50 H Slurry:	1.61 Yield

10.0% Salt
5.0% Gypsum
2.0% Gel
0.5% CFL-210
5.0 lb Kol-Seal
0.25 lb Cellophane Flake
0.2% CD-100

2nd Stage:

76.94 bbl	225 Sacks of 13.6 ppg
Class A Slurry -	1.92 Yield

10.0% Salt
6.0% Gypsum
2.0% Gel
0.5% CFL-210
5.0 lb Kol-Seal
0.25 lb Cellophane Flake

The first stage was displaced with 34 bbl fresh water and 94 Bbls of WBM. The plug bumped and was pressured to 1000 psi. Upon release the floats held. The stage tool was opened at 900 psi and the rig circulated 4 hours. The second stage was pumped and displaced with 117 bbl fresh water. The plug bumped and was pressured to 2000 psi.

All real time data can be view in the Job Summary section.

Allied Oil & Gas Services remains committed to provide operational excellence and superior product performance. All comments and suggestions are greatly appreciated and help us to continue to provide this level of service.

Again we want to thank you for the opportunity to perform these and your future cementing & acidizing service needs.

Job Number: LIB1604090338	Job Purpose: 02 Production/Long String		
Customer: MERIT ENERGY COMPANY	Date: 4/9/2016		
Well Name: GCCU	Number: #404W	API/UWI:	
County: Haskell	City: Sublette	State: KS	
Cust. Rep:	Phone:	Rig Phone:	
Distance: 50 miles (one way)	Supervisor: Aldo Espinosa		

Employees:	Emp. ID:	Employees:	Emp. ID:
ALDO ESPINOZA			
OSCAR SIGALA			
RAMON ESCARCEGA			
LORENZO RIOS			

Equipment:
984-
903-541
993-1066
982-

Materials - Pumping Schedule					
STAGE #1					
Fluid Name	Description	Rqstd Qty	Density	Yield	Water (gal/sk)
Spacer 1	HIVIS SWEEP	12	8.40	n/a	n/a
Fluid Name	Description	Rqstd Qty	Density	Yield	Water (gal/sk)
Lead 1	ALLIED 50/50 POZ BLEND - CLASS H	50	13.60	1.61	7.37
Fluid Name	Description	Rqstd Qty	Density	Yield	Water (gal/sk)
Tail 1	ALLIED 50/50 POZ BLEND - CLASS H	100	13.60	1.61	7.37
Fluid Name	Description	Rqstd Qty	Density	Yield	Water (gal/sk)
Disp. 1	Displacement	137	8.33	n/a	n/a
STAGE #2					
Fluid Name	Description	Rqstd Qty	Density	Yield	Water (gal/sk)
Stg 2 Spacer 1	HIVIS SWEEP	12	8.40	n/a	n/a
Fluid Name	Description	Rqstd Qty	Density	Yield	Water (gal/sk)
Stg 2 Tail 1	ALLIED SPECIAL BLEND CEMENT - CLASS A	225	13.60	1.92	9.56
Fluid Name	Description	Rqstd Qty	Density	Yield	Water (gal/sk)
Stg 2 Disp. 1	Displacement	137	8.33	n/a	n/a

Slurry: Lead 1						
Slurry Name: ALLIED 50/50 POZ BLEND - CLASS H						
Quantity:	50 sacks	Blend Vol:	65.66 cu.ft.	Blend Weight:	5092.8605 lbs	
Material	Description	Conc. (lb/sk)	Determined by	Load Volume	UOM	
CCHP	CLASS H PREMIUM	47	% Base Material	2350.0	lbm	
CPOZ	POZMIX FLYASH	37	% Base Material	1850.0	lbm	
CGEL	GEL - BENTONITE	1.68	% BWOC	84.0	lbm	
CFL-210	FLUID LOSS ADDITIVE - LOW TEMP	0.42	% BWOC	21.0	lbm	
CLC-KOL	KOL-SEAL	5	lb/sk	250.0	lbm	
CLC-CPF	CELLOPHANE FLAKES	0.25	lb/sk	12.5	lbm	
CA-200	SODIUM CHLORIDE	6.13921	% BWOW	307.0	lbm	
CA-500	GYPSUM	4.2	% BWOC	210.0	lbm	
CD-100	CEMENT DISPERSANT	0.168	% BWOC	8.4	lbm	
Water	Mixing Water	7.37	gal/sk	368.5	gal	

Slurry: Tail 1						
Slurry Name: ALLIED 50/50 POZ BLEND - CLASS H						
Quantity:	100 sacks	Blend Vol:	131.31 cu.ft.	Blend Weight:	10185.721 lbs	
Material	Description	Conc. (lb/sk)	Determined by	Load Volume	UOM	
CCHP	CLASS H PREMIUM	47	% Base Material	4700.0	lbm	
CPOZ	POZMIX FLYASH	37	% Base Material	3700.0	lbm	
CGEL	GEL - BENTONITE	1.68	% BWOC	168.0	lbm	
CFL-210	FLUID LOSS ADDITIVE - LOW TEMP	0.42	% BWOC	42.0	lbm	
CLC-KOL	KOL-SEAL	5	lb/sk	500.0	lbm	
CLC-CPF	CELLOPHANE FLAKES	0.25	lb/sk	25.0	lbm	
CA-200	SODIUM CHLORIDE	6.13921	% BWOW	613.9	lbm	
CA-500	GYPSUM	4.2	% BWOC	420.0	lbm	
CD-100	CEMENT DISPERSANT	0.168	% BWOC	16.8	lbm	
Water	Mixing Water	7.37	gal/sk	737.0	gal	

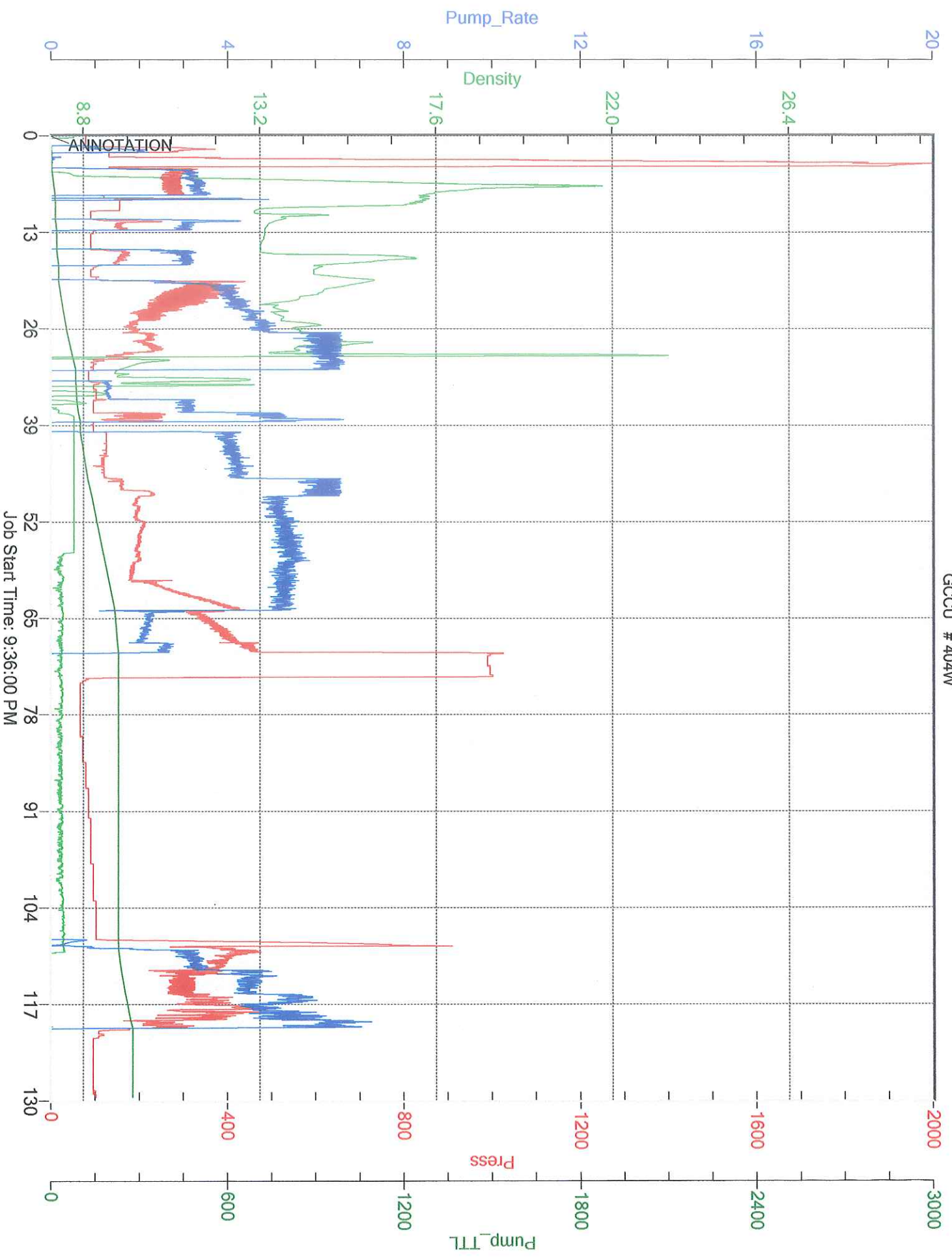
Slurry: Stg 2 Tail 1						
Slurry Name: ALLIED SPECIAL BLEND CEMENT - CLASS A						
Quantity:	225 sacks	Blend Vol:	467542345265 cu.ft.	Blend Weight:	25920.783 lbs	
Material	Description	Conc. (lb/sk)	Determined by	Load Volume	UOM	
CCAC	CLASS A COMMON	94	% Base Material	21150.0	lbm	
CA-200	SODIUM CHLORIDE	7.96348	% BWOW	1791.8	lbm	
CA-500	GYPSUM	5.64	% BWOC	1269.0	lbm	
CGEL	GEL - BENTONITE	1.88	% BWOC	423.0	lbm	
CFL-210	FLUID LOSS ADDITIVE - LOW TEMP	0.47	% BWOC	105.8	lbm	
CLC-KOL	KOL-SEAL	5	lb/sk	1125.0	lbm	
CLC-CPF	CELLOPHANE FLAKES	0.25	lb/sk	56.3	lbm	
Water	Mixing Water	9.56	gal/sk	2151.0	gal	

Cement Job Summary

Job Number: LIB1604090338		Job Purpose: 02 Production/Long String		Date: 4/9/2016		
Customer: MERIT ENERGY COMPANY				Number: #404W		
Well Name: GCCU		City: Sublette		API/UWI: KS		
County: Haskell		Phone:		State: KS		
Cust. Rep:		Rig Phone:		0		
Distance: 50 miles (one way)			Supervisor: Aldo Espinosa			
DATE	TIME	PRESSURE - (Psi)		FLUID PUMPED DATA		COMMENTS
	AM/PM	CASING	ANNULUS	VOLUME	RATE (BPM)	
4/8/2016	600PM					ARRIVE TO LOCATION
	630PM					RIG RUNNING CASING
	640PM					SPOT EQUIPMENT
	730PM					RIG UP IRON ON GROUND
	745PM					CASING ON BOTTOM
	755PM					STAB CMT HEAD AND RIG UP FLOOR TO CIRCULATE
	759PM	2000				CASING CREW OUT OF WAY
	802PM			14	2	PRE-JOB SAFETY MEETING
				3	4	TEST LINES
				12	4	3 BBLS OF WATER
	807PM			12	4	12 BBLS OF H2O SWEEP
	816PM			3	4	3 BBLS OF WATER
	831PM			3	4	PLUG RAT & MOUSE HOLE WITH 50 SKS OF CMT (14 BBLS @13.6)
	836PM	110		29	4	100 SKS OF CMT (29 BBLS @13.6)
	845PM	230				SHUTDOWN / CLEAN LINES / DROP LATCH DOWN PLUG
	901PM			118	5	PUMP 34 BBLS OF FRESH WATER AT 5 BPM
	908PM	480		110	3	PUMP 94 BBLS OF WBM AT 5 BPM / FOR 127 BBLS TOTAL DISP.
	911PM	1000		118	3	DISP. REACHED CMT AT 100 BBLS GONE
	915PM			110	3	PLUG PASSING THRU DV TOOL / SLOW RATE TO 3 BPM
	940PM	900		118	3	NO SIGNIFICANT SHEAR PRESSURE / CONTINUE DISP. AT 3 BPM
	945PM			128	3	BUMP PLUG WITH 480 PSI AND TOOK OVER TO 1000 PSI AT 127 BBLS
	955PM					FLOATS HOLDING FOR 3 MINUTES - 1/4 BBL BACK
						DROP MULTIPLE STAGE CEMENTING OPENING TOOL
						WAIT 25 MINUTES FOR TOOL TO FALL
				1	2	OPEN MULTIPLE STAGE CEMENTING DV TOOL WITH 900 PSI
						CIRCULATION ESTABLISHED / CLEAN TANKS OUT
						1ST STAGE COMPLETE / TURN OVER TO RIG TO CIRCULATE FOR 4 HRS
						2ND STAGE
4/9/2016				3	3.5	3 BBLS OF WATER
	200AM	700		12	3.5	12 BBLS OF H2O SWEEP
				3	3.5	3 BBLS OF WATER
	208AM	300		77	4.5	225 SKS OF CMT (77 BBLS @13.6)
	250AM	110				SHUTDOWN / CLEAN LINES / DROP CLOSING PLUG
	300AM				5.5	117 BBLS DISPLACEMENT AT 6 BPM
	322AM	330		78	5.5	DISP. REACHED CMT AT 75 BBLS GONE
	331AM	800		105	3	SLOW RATE TO 3 BPM TO BUMP PLUG
	338AM	900		117	3	BUMP PLUG WITH 840 PSI AND TOOK UP TO 2000 PSI TO CLOSE
	343AM	2000				FLOATS HOLDING FOR 5 MINUTES / 1 BBL BACK
						END JOB / FULL CIRCULATION BOTH STAGES
	415AM					RIG DOWN EQUIPMENT
	440AM					CREW LEAVE LOCATION

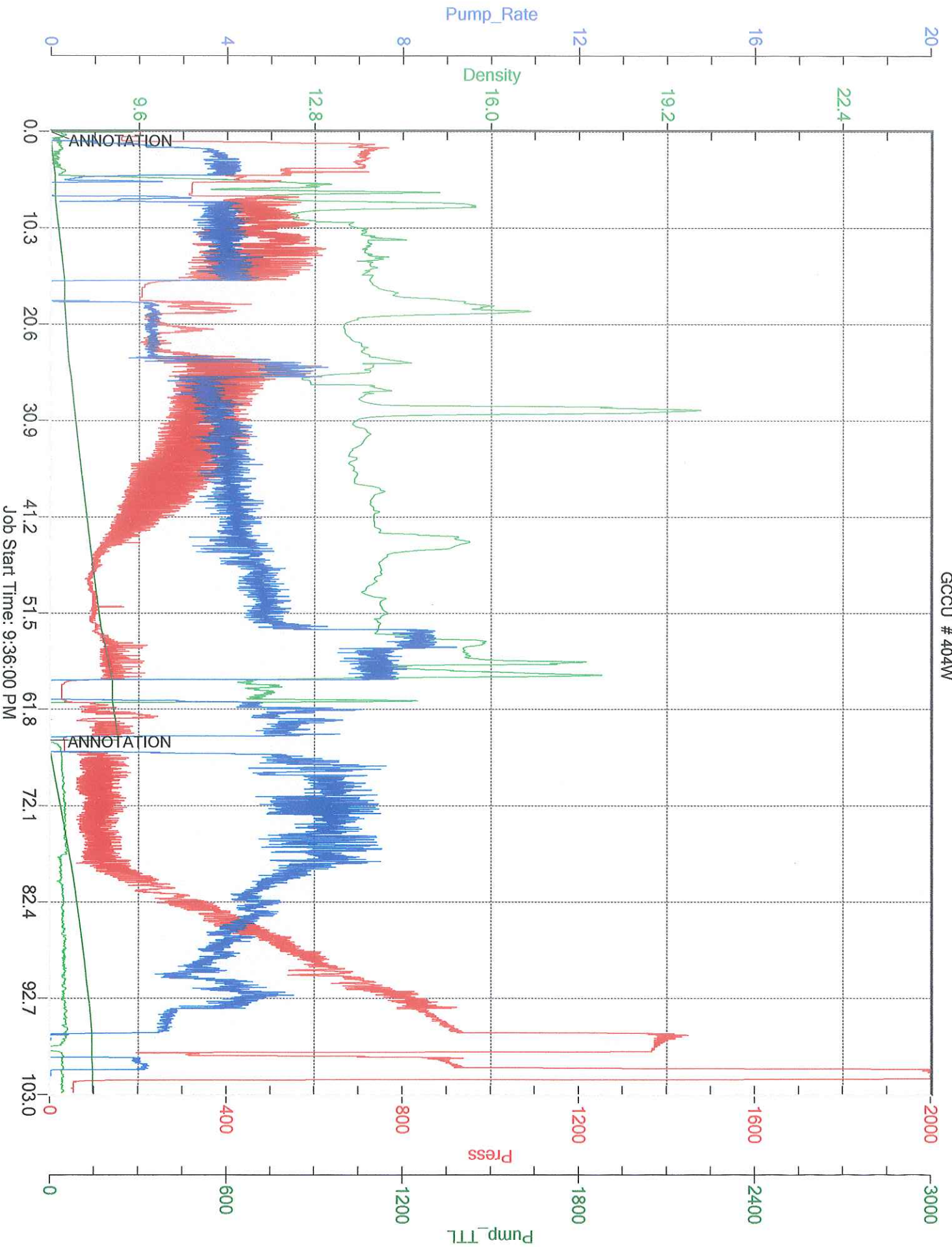
MERIT ENERGY FIRST STAGE

GCCU # 404W



MERIT ENERGY SECOND STAGE

GCCU # 404W





CEMENT MIXING WATER GUIDELINES

Company Name:

MERIT ENERGY COMPANY

Lease Name:

GCCU # #404W

County

Haskell

State

KS

Water Source:

TANK

Submitted By:

Aldo Espinosa

Date:

4/8/2016

pH Level

7

Must be less than 8.5

Sulfates

200

Must be less than 1,000 PPM

Chlorides

550

Must be less than 3,000 PPM

Temperature

62

Must be less than 100 deg F

COMMENTS

[Empty box for comments]

Customer Signature



Thank You

