

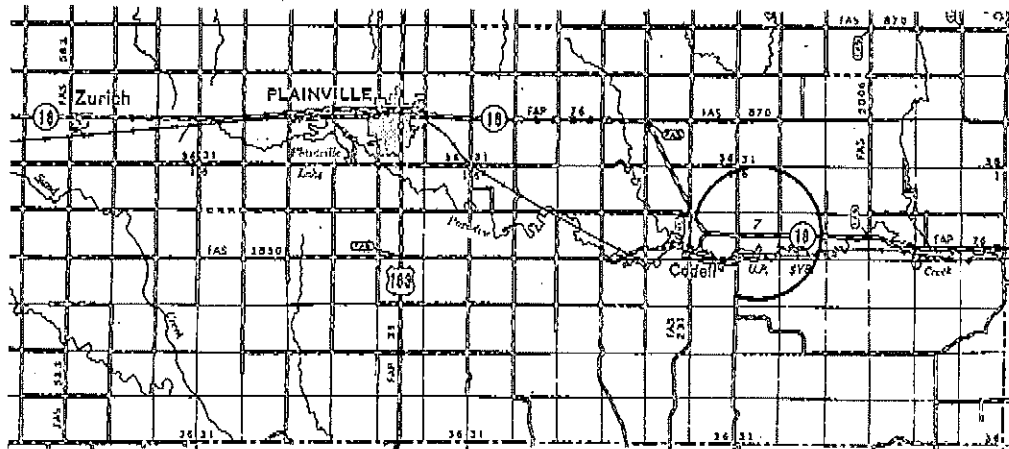
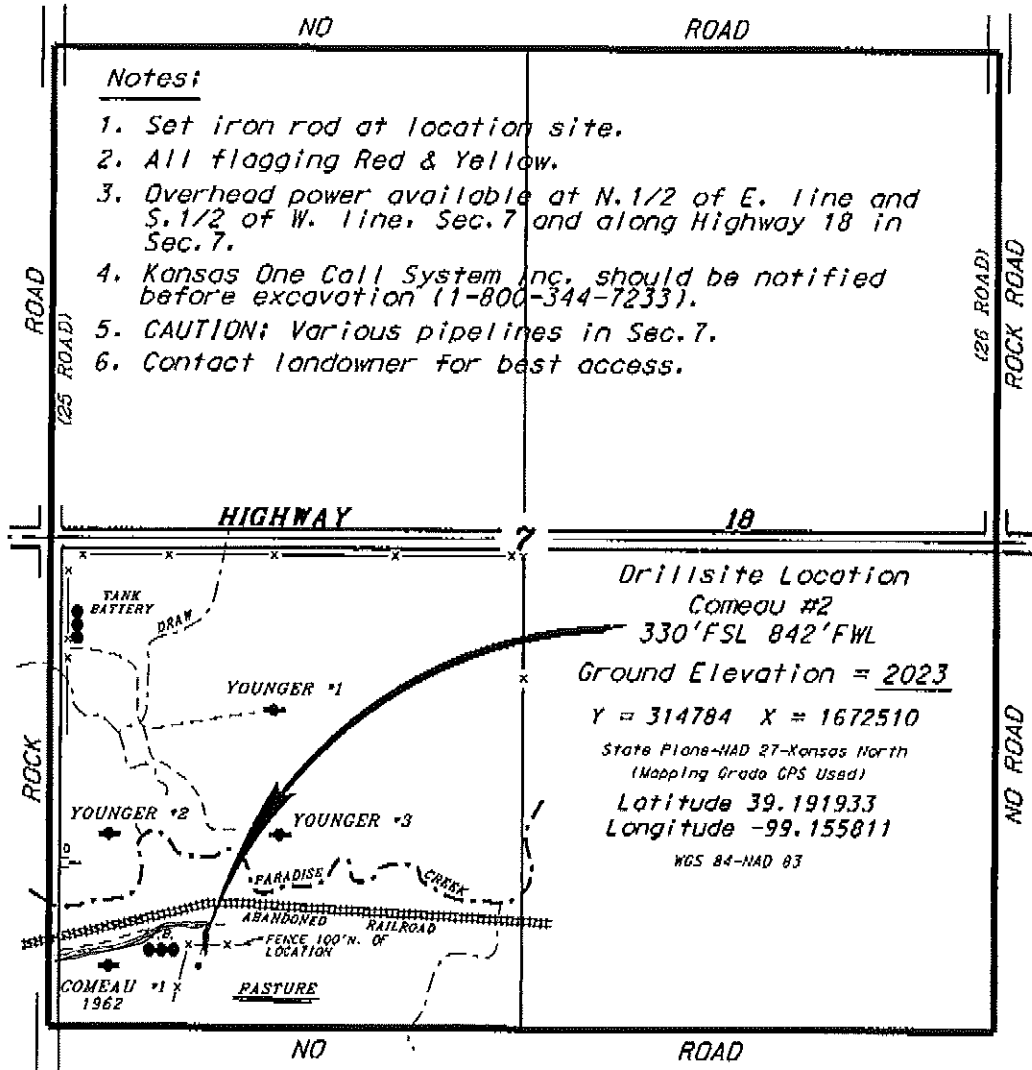
**VESS OIL CORPORATION
 COMEAU LEASE
 SW.1/4, SECTION 7, T10S, R16W
 ROOKS COUNTY, KANSAS**

Directions:
 From the Intersection of Highway 18
 and a n-s county road 0.75 miles East
 of Cadell, Kansas, go 0.43 miles South
 on a county road, then go 0.15 miles
 East to location.

Notes:

1. Set iron rod at location site.
2. All flagging Red & Yellow.
3. Overhead power available at N.1/2 of E. line and S.1/2 of W. line, Sec.7 and along Highway 18 in Sec.7.
4. Kansas One Call System Inc. should be notified before excavation (1-800-344-7233).
5. CAUTION; Various pipelines in Sec.7.
6. Contact landowner for best access.

*Ingress and egress to location as shown on this plot is per usage only and may not be legally opened for public use. Contact landowner, tenant and county road department for access.



• Controlling data is based upon the best maps and photographs available to us and upon a regular section of land containing 640 acres.
 • Approximate section lines were determined using the normal standards of care of oilfield surveyors practicing in the state of Kansas. The section corners, which establish the precise section lines, were not necessarily located, and the exact location of the drillsite location in the section not guaranteed. Therefore, the operator accepting this service and accepting this plot and all other parties relying thereon agree to hold Central Kansas Oilfield Services, Inc., its officers and employees harmless from all losses, costs and expenses and said parties released from all liability from incidental or consequential damages.
 • Elevations derived from National Geodetic Vertical Datum.

Date **September 12, 2016**

