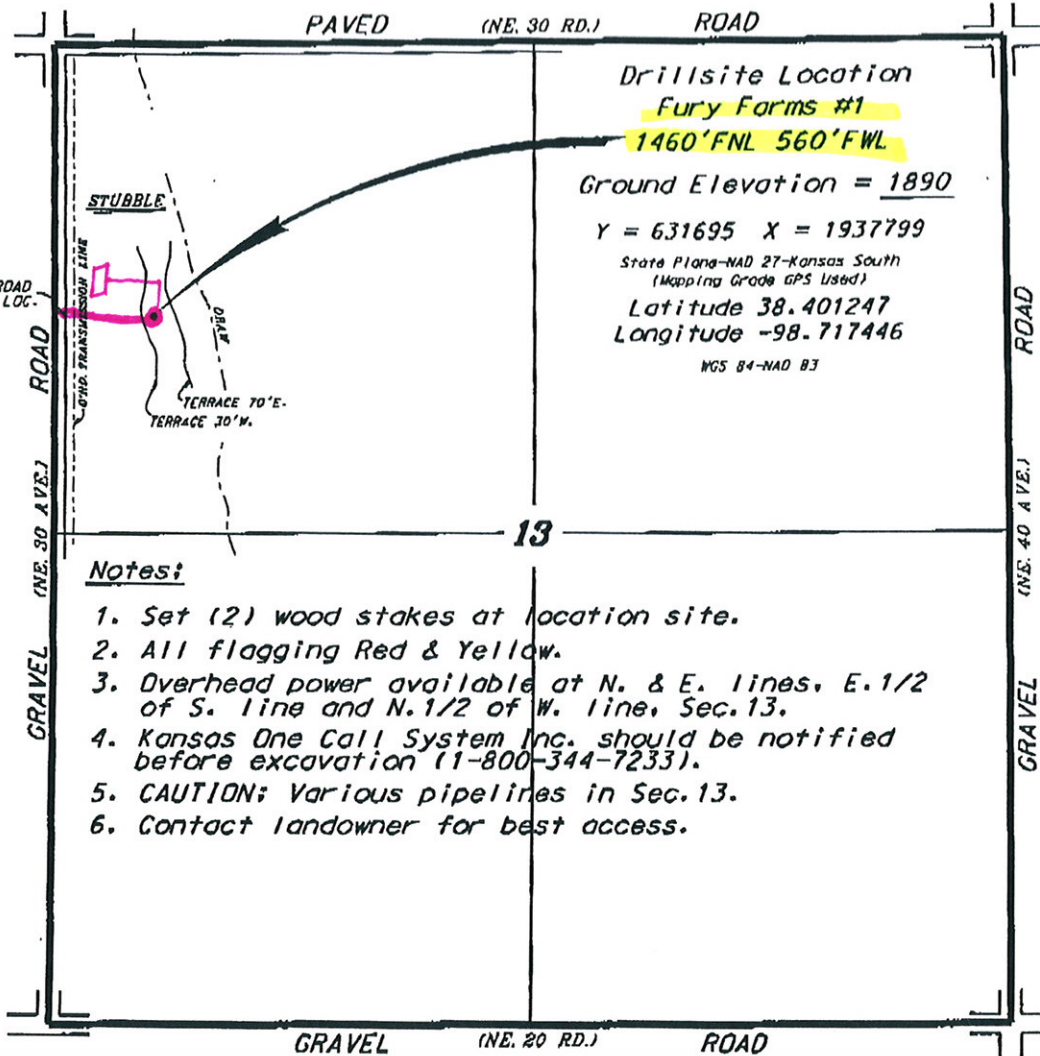


RJM OIL COMPANY, INC.
FURY FARMS LEASE
NW. 1/4, SECTION 13, T19S, R13W
BARTON COUNTY, KANSAS

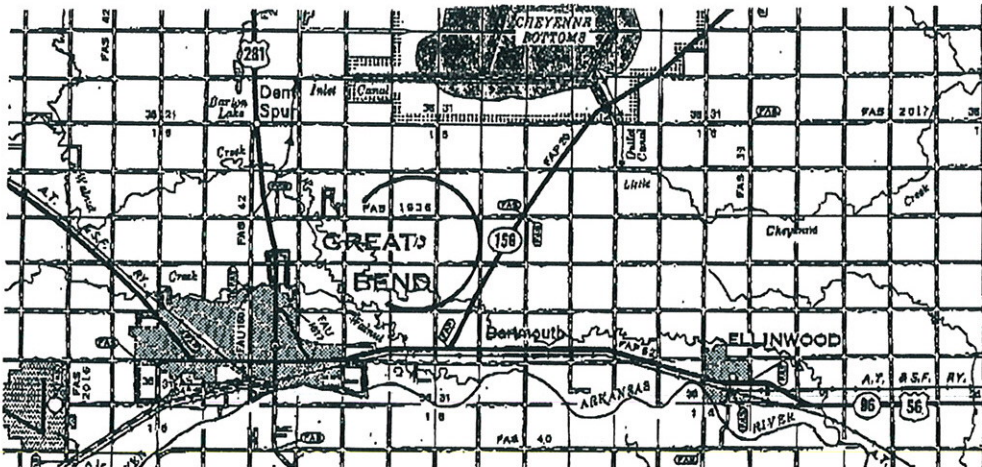


Drillsite Location
Fury Farms #1
1460'FNL 560'FWL
 Ground Elevation = 1890
 Y = 631695 X = 1937799
 State Plane-NAD 27-Kansas South
 (Mapping Grade GPS Used)
 Latitude 38.401247
 Longitude -98.717446
 NGS 84-NAD 83

Notes:

1. Set (2) wood stakes at location site.
2. All flagging Red & Yellow.
3. Overhead power available at N. & E. lines, E. 1/2 of S. line and N. 1/2 of W. line, Sec. 13.
4. Kansas One Call System Inc. should be notified before excavation (1-800-344-7233).
5. CAUTION; Various pipelines in Sec. 13.
6. Contact landowner for best access.

* Ingress and egress to location as shown on this plat is per usage only and may not be legally opened for public use. Contact landowner, tenant and county road department for access.



• Controlling data is based upon the best maps and photographs available to us and upon a regular section of land containing 640 acres.
 • Approximate section lines were determined using the normal standards of care of oilfield surveyors practicing in the state of Kansas. The section corners, which establish the precise section lines, were not necessarily located, and the exact location of the drillsite location in the section is not guaranteed. Therefore, the operator securing this service and accepting this plat and all other parties relying thereon agree to hold Central Kansas Oilfield Services, Inc. its officers and employees harmless from all losses, costs and expenses and hold entities released from any liability from incidental or consequential damages.
 • Elevations derived from National Geodetic Vertical Datum.

Date September 20, 2016