



## DRILL STEM TEST REPORT

Prepared For: **Carmen Schmitt, Inc.**

PO Box 47  
Great Bend, KS 67530

ATTN: Brad Rine

### **CEO Trust #1-14**

### **14-14s-26w Gove,KS**

Start Date: 2016.09.08 @ 01:47:48

End Date: 2016.09.08 @ 11:05:48

Job Ticket #: 58075                      DST #: 1

Trilobite Testing, Inc  
PO Box 362 Hays, KS 67601  
ph: 785-625-4778 fax: 785-625-5620

Printed: 2016.09.12 @ 09:11:51



**TRILOBITE  
TESTING, INC**

# DRILL STEM TEST REPORT

Carmen Schmitt, Inc.  
PO Box 47  
Great Bend, KS 67530  
ATTN: Brad Rine

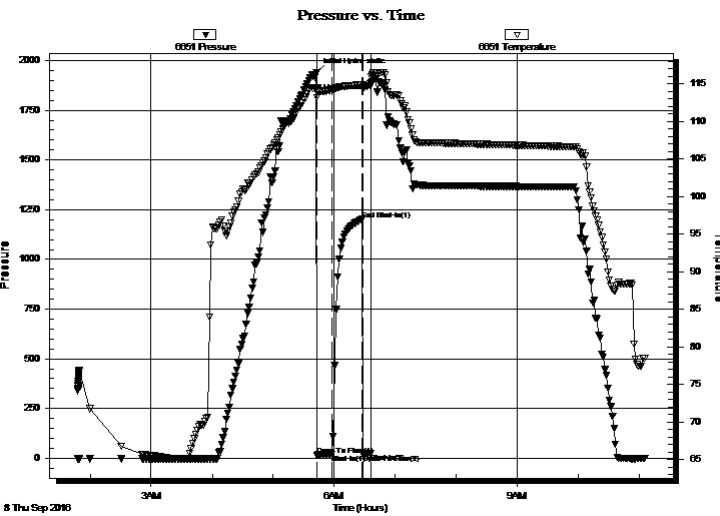
**14-14s-26w Gove,KS**  
**CEO Trust #1-14**  
Job Ticket: 58075 **DST#: 1**  
Test Start: 2016.09.08 @ 01:47:48

## GENERAL INFORMATION:

Formation: **LKC 'H'**  
Deviated: No Whipstock: ft (KB)  
Time Tool Opened: 05:42:48  
Time Test Ended: 11:05:48  
Interval: **3925.00 ft (KB) To 3960.00 ft (KB) (TVD)**  
Total Depth: 3960.00 ft (KB) (TVD)  
Hole Diameter: 7.88 inches Hole Condition: Fair  
Test Type: Conventional Bottom Hole (Initial)  
Tester: Brannan Lonsdale/ Sp  
Unit No: 73  
Reference Elevations: 2477.00 ft (KB)  
2472.00 ft (CF)  
KB to GR/CF: 5.00 ft

**Serial #: 6651 Inside**  
Press@RunDepth: 19.80 psig @ 3957.00 ft (KB) Capacity: 8000.00 psig  
Start Date: 2016.09.08 End Date: 2016.09.08 Last Calib.: 2016.09.08  
Start Time: 01:47:49 End Time: 11:05:48 Time On Btm: 2016.09.08 @ 05:42:18  
Time Off Btm: 2016.09.08 @ 06:36:48

TEST COMMENT: 15- IF- 1/2" blow throughout  
30- IS- No Blow  
05- FF- No Blow ; Pulled tool



## PRESSURE SUMMARY

Time (Min.)	Pressure (psig)	Temp (deg F)	Annotation
0	1940.33	114.48	Initial Hydro-static
1	15.82	113.20	Open To Flow (1)
15	19.80	114.16	Shut-In(1)
45	1201.30	114.92	End Shut-In(1)
46	21.63	114.52	Open To Flow (2)
54	23.61	114.86	Shut-In(2)
55	1923.14	116.20	Final Hydro-static

## Recovery

Length (ft)	Description	Volume (bbl)
20.00	M w/ few oil spots in tool	0.10

## Gas Rates

Choke (inches)	Pressure (psig)	Gas Rate (Mcf/d)





**TRILOBITE  
TESTING, INC**

# DRILL STEM TEST REPORT

**TOOL DIAGRAM**

Carmen Schmitt, Inc.

**14-14s-26w Gove,KS**

PO Box 47  
Great Bend, KS 67530

**CEO Trust #1-14**

Job Ticket: 58075

**DST#: 1**

ATTN: Brad Rine

Test Start: 2016.09.08 @ 01:47:48

## Tool Information

Drill Pipe:	Length: 3895.00 ft	Diameter: 3.82 inches	Volume: 55.21 bbl	Tool Weight: 2500.00 lb
Heavy Wt. Pipe:	Length: ft	Diameter: inches	Volume: - bbl	Weight set on Packer: 25000.00 lb
Drill Collar:	Length: 29.00 ft	Diameter: 2.25 inches	Volume: 0.14 bbl	Weight to Pull Loose: 60000.00 lb
			<u>Total Volume: - bbl</u>	Tool Chased 0.00 ft
Drill Pipe Above KB:	26.00 ft			String Weight: Initial 52000.00 lb
Depth to Top Packer:	3925.00 ft			Final 52000.00 lb
Depth to Bottom Packer:	ft			
Interval between Packers:	35.00 ft			
Tool Length:	62.00 ft			
Number of Packers:	2	Diameter: 6.75 inches		

Tool Comments:

## Tool Description

Tool Description	Length (ft)	Serial No.	Position	Depth (ft)	Accum. Lengths
Change Over Sub	1.00			3899.00	
Shut In Tool	5.00			3904.00	
Hydraulic tool	5.00			3909.00	
Jars	5.00			3914.00	
Safety Joint	2.00			3916.00	
Packer	5.00			3921.00	27.00 Bottom Of Top Packer
Packer	4.00			3925.00	
Stubb	1.00			3926.00	
Perforations	31.00			3957.00	
Recorder	0.00	6651	Inside	3957.00	
Recorder	0.00	8959	Outside	3957.00	
Bullnose	3.00			3960.00	35.00 Bottom Packers & Anchor

**Total Tool Length: 62.00**



**TRILOBITE  
TESTING, INC**

# DRILL STEM TEST REPORT

**FLUID SUMMARY**

Carmen Schmitt, Inc.

**14-14s-26w Gove,KS**

PO Box 47  
Great Bend, KS 67530

**CEO Trust #1-14**

Job Ticket: 58075

**DST#: 1**

ATTN: Brad Rine

Test Start: 2016.09.08 @ 01:47:48

## Mud and Cushion Information

Mud Type: Gel Chem

Cushion Type:

Oil API:

deg API

Mud Weight: 9.00 lb/gal

Cushion Length:

ft

Water Salinity:

ppm

Viscosity: 60.00 sec/qt

Cushion Volume:

bbbl

Water Loss: 6.78 in<sup>3</sup>

Gas Cushion Type:

Resistivity: ohm.m

Gas Cushion Pressure:

psig

Salinity: 1400.00 ppm

Filter Cake: inches

## Recovery Information

Recovery Table

Length ft	Description	Volume bbl
20.00	M w / few oil spots in tool	0.098

Total Length: 20.00 ft      Total Volume: 0.098 bbl

Num Fluid Samples: 0

Num Gas Bombs: 0

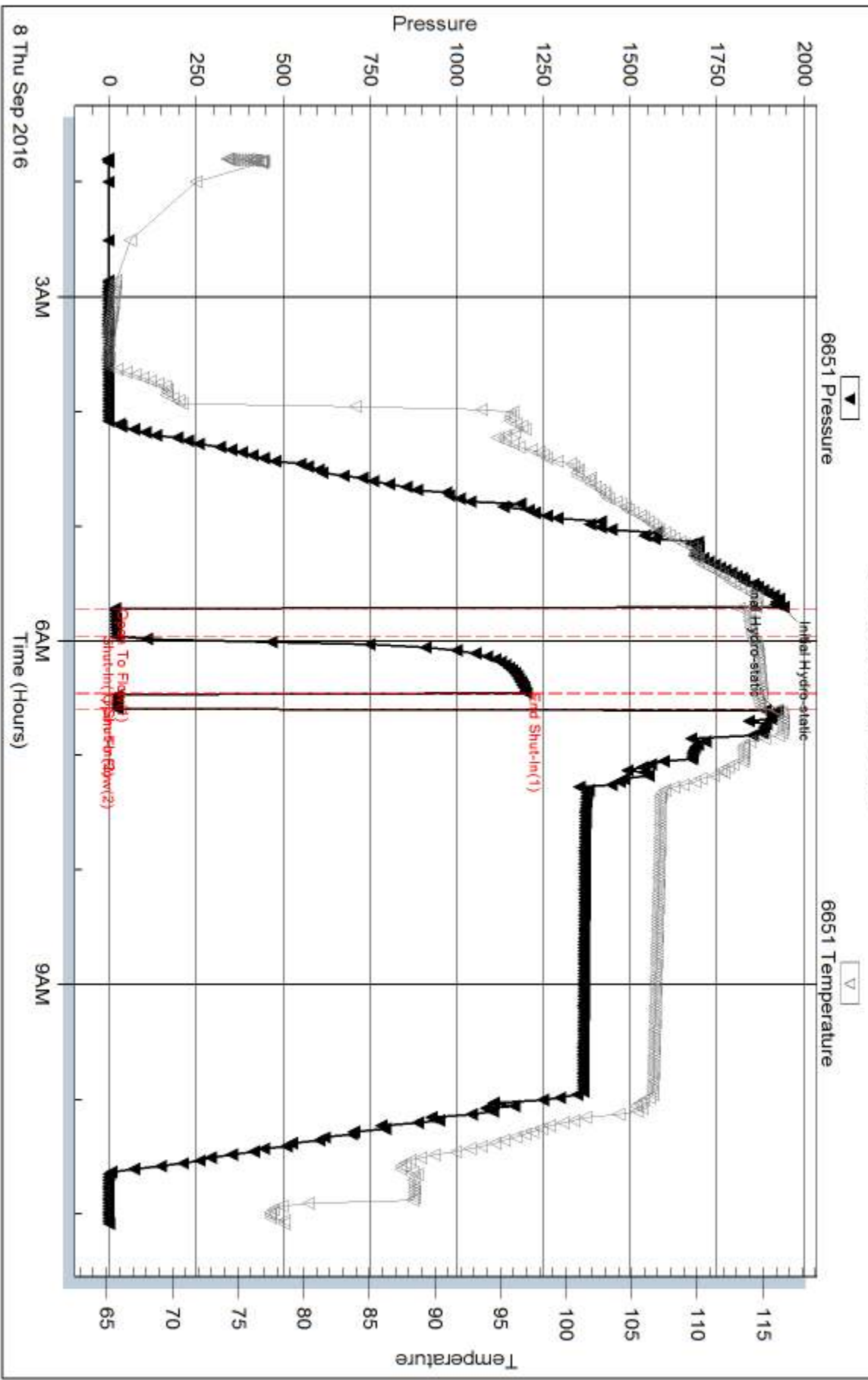
Serial #:

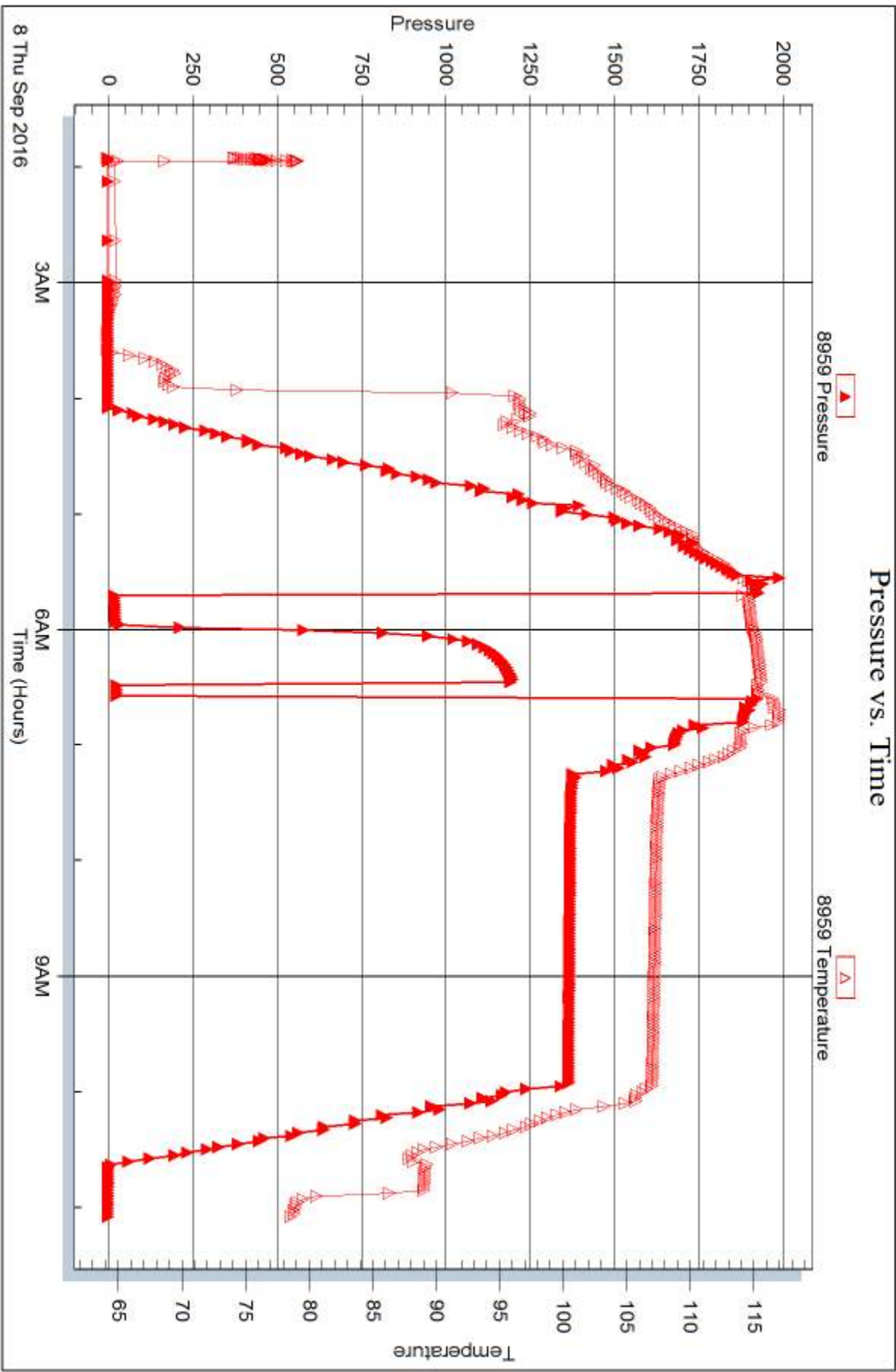
Laboratory Name:

Laboratory Location:

Recovery Comments:

### Pressure vs. Time







## DRILL STEM TEST REPORT

Prepared For: **Carmen Schmitt, Inc.**

PO Box 47  
Great Bend, KS 67530

ATTN: Brad Rine

### **CEO Trust #1-14**

### **14-14s-26w Gove,KS**

Start Date: 2016.09.08 @ 22:23:58

End Date: 2016.09.09 @ 03:58:58

Job Ticket #: 61276                      DST #: 2

Trilobite Testing, Inc  
PO Box 362 Hays, KS 67601  
ph: 785-625-4778 fax: 785-625-5620

Printed: 2016.09.12 @ 09:11:21





**TRILOBITE TESTING, INC**

# DRILL STEM TEST REPORT

Carmen Schmitt, Inc.  
 PO Box 47  
 Great Bend, KS 67530  
 ATTN: Brad Rine

**14-14s-26w Gove, KS**  
**CEO Trust #1-14**  
 Job Ticket: 61276 **DST#: 2**  
 Test Start: 2016.09.08 @ 22:23:58

## GENERAL INFORMATION:

Formation: **LKC "K"**  
 Deviated: No Whipstock: ft (KB)  
 Time Tool Opened: 01:04:58  
 Time Test Ended: 03:58:58  
 Interval: **4007.00 ft (KB) To 4035.00 ft (KB) (TVD)**  
 Total Depth: 4035.00 ft (KB) (TVD)  
 Hole Diameter: 7.88 inches Hole Condition: Fair  
 Test Type: Conventional Bottom Hole (Reset)  
 Tester: Brannan Lonsdale/ Sp  
 Unit No: 73  
 Reference Elevations: 2477.00 ft (KB)  
 2472.00 ft (CF)  
 KB to GR/CF: 5.00 ft

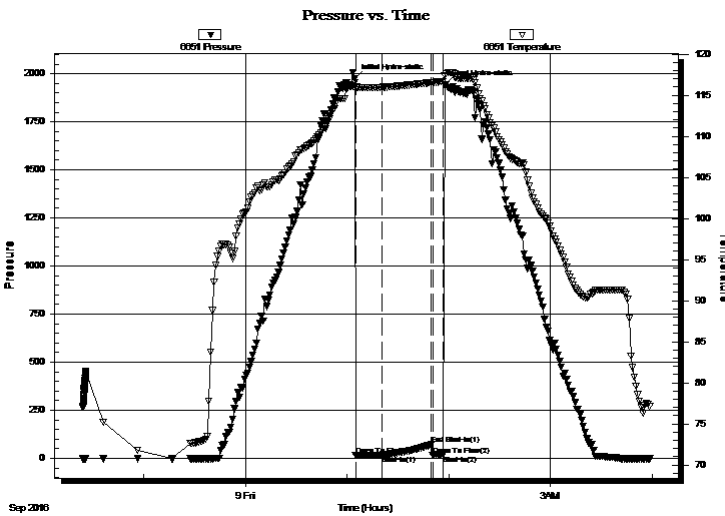
## Serial #: 6651

Inside

Press@RunDepth: 16.90 psig @ 4032.00 ft (KB) Capacity: 8000.00 psig  
 Start Date: 2016.09.08 End Date: 2016.09.09 Last Calib.: 2016.09.09  
 Start Time: 22:23:59 End Time: 03:58:58 Time On Btm: 2016.09.09 @ 01:04:28  
 Time Off Btm: 2016.09.09 @ 01:57:28

TEST COMMENT: 15- IF- Weak surface blow died in 3 mins  
 30- IS- No blow  
 05- FF- No blow Pulled tool

## PRESSURE SUMMARY



Time (Min.)	Pressure (psig)	Temp (deg F)	Annotation
0	1974.56	116.52	Initial Hydro-static
1	15.63	115.72	Open To Flow (1)
16	16.90	115.97	Shut-In(1)
45	70.85	116.54	End Shut-In(1)
46	17.09	116.55	Open To Flow (2)
52	17.39	116.69	Shut-In(2)
53	1941.42	117.37	Final Hydro-static

## Recovery

Length (ft)	Description	Volume (bbl)
10.00	M w / oil spots in tool	0.05

\* Recovery from multiple tests

## Gas Rates

Choke (inches)	Pressure (psig)	Gas Rate (Mcf/d)





**TRILOBITE  
TESTING, INC.**

# DRILL STEM TEST REPORT

**TOOL DIAGRAM**

Carmen Schmitt, Inc.

**14-14s-26w Gove, KS**

PO Box 47  
Great Bend, KS 67530

**CEO Trust #1-14**

Job Ticket: 61276

**DST#: 2**

ATTN: Brad Rine

Test Start: 2016.09.08 @ 22:23:58

## Tool Information

Drill Pipe:	Length: 3959.00 ft	Diameter: 3.82 inches	Volume: 56.12 bbl	Tool Weight:	2500.00 lb
Heavy Wt. Pipe:	Length: ft	Diameter: inches	Volume: - bbl	Weight set on Packer:	25000.00 lb
Drill Collar:	Length: 29.00 ft	Diameter: 2.25 inches	Volume: 0.14 bbl	Weight to Pull Loose:	54000.00 lb
			<u>Total Volume:</u> - bbl	Tool Chased	0.00 ft
Drill Pipe Above KB:	8.00 ft			String Weight: Initial	52000.00 lb
Depth to Top Packer:	4007.00 ft			Final	52000.00 lb
Depth to Bottom Packer:	ft				
Interval between Packers:	28.00 ft				
Tool Length:	55.00 ft				
Number of Packers:	2	Diameter: 6.75 inches			

Tool Comments:

## Tool Description

Tool Description	Length (ft)	Serial No.	Position	Depth (ft)	Accum. Lengths
Change Over Sub	1.00			3981.00	
Shut In Tool	5.00			3986.00	
Hydraulic tool	5.00			3991.00	
Jars	5.00			3996.00	
Safety Joint	2.00			3998.00	
Packer	5.00			4003.00	27.00 Bottom Of Top Packer
Packer	4.00			4007.00	
Stubb	1.00			4008.00	
Perforations	24.00			4032.00	
Recorder	0.00	6651	Inside	4032.00	
Recorder	0.00	8959	Outside	4032.00	
Bullnose	3.00			4035.00	28.00 Bottom Packers & Anchor

**Total Tool Length: 55.00**



**TRILOBITE  
TESTING, INC**

# DRILL STEM TEST REPORT

**FLUID SUMMARY**

Carmen Schmitt, Inc.

**14-14s-26w Gove,KS**

PO Box 47  
Great Bend, KS 67530

**CEO Trust #1-14**

Job Ticket: 61276

**DST#: 2**

ATTN: Brad Rine

Test Start: 2016.09.08 @ 22:23:58

## Mud and Cushion Information

Mud Type: Gel Chem

Cushion Type:

Oil API:

deg API

Mud Weight: 9.00 lb/gal

Cushion Length:

ft

Water Salinity:

ppm

Viscosity: 53.00 sec/qt

Cushion Volume:

bbbl

Water Loss: 6.78 in<sup>3</sup>

Gas Cushion Type:

Resistivity: ohm.m

Gas Cushion Pressure:

psig

Salinity: 1500.00 ppm

Filter Cake: inches

## Recovery Information

Recovery Table

Length ft	Description	Volume bbl
10.00	M w / oil spots in tool	0.049

Total Length: 10.00 ft      Total Volume: 0.049 bbl

Num Fluid Samples: 0

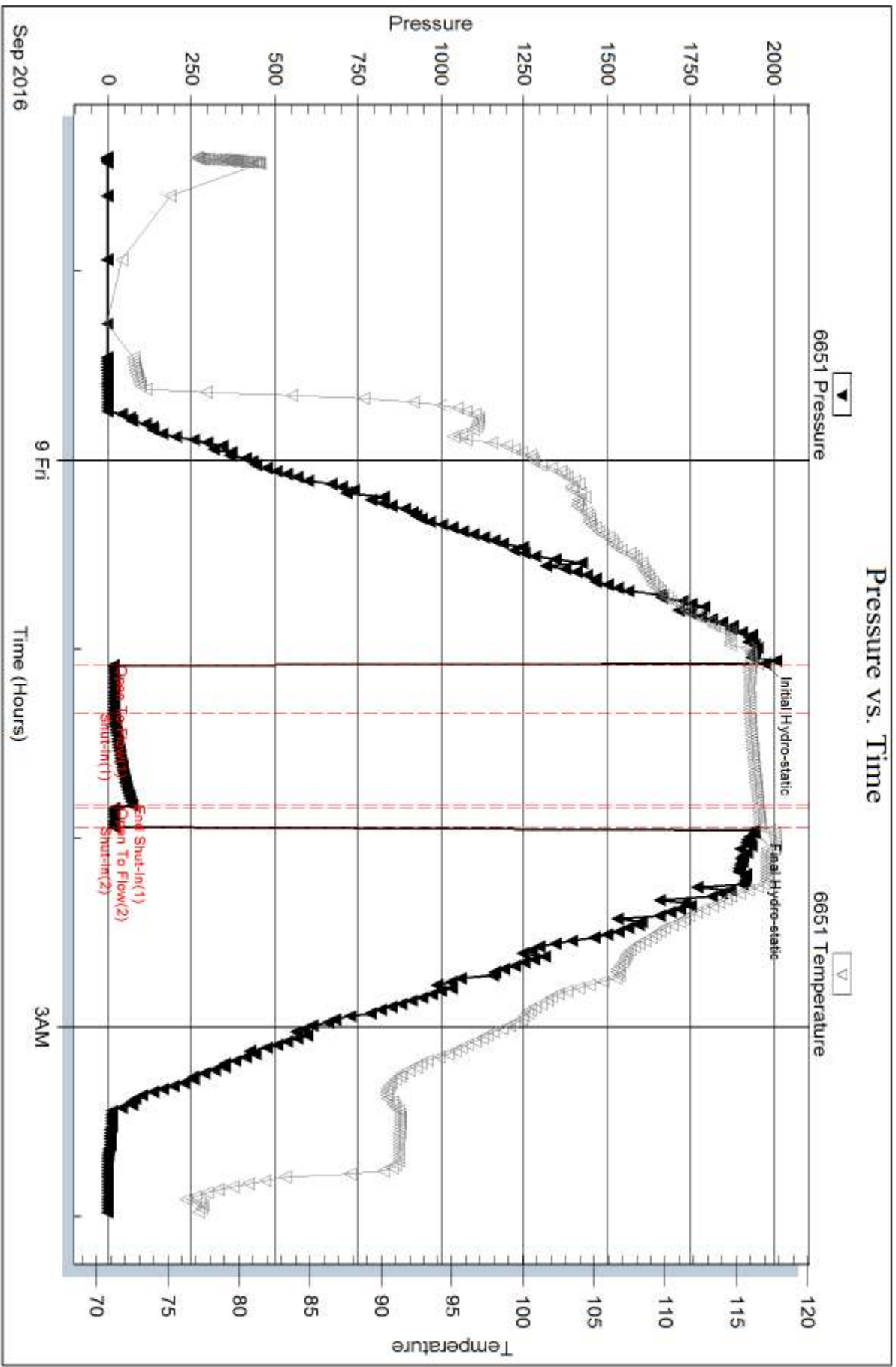
Num Gas Bombs: 0

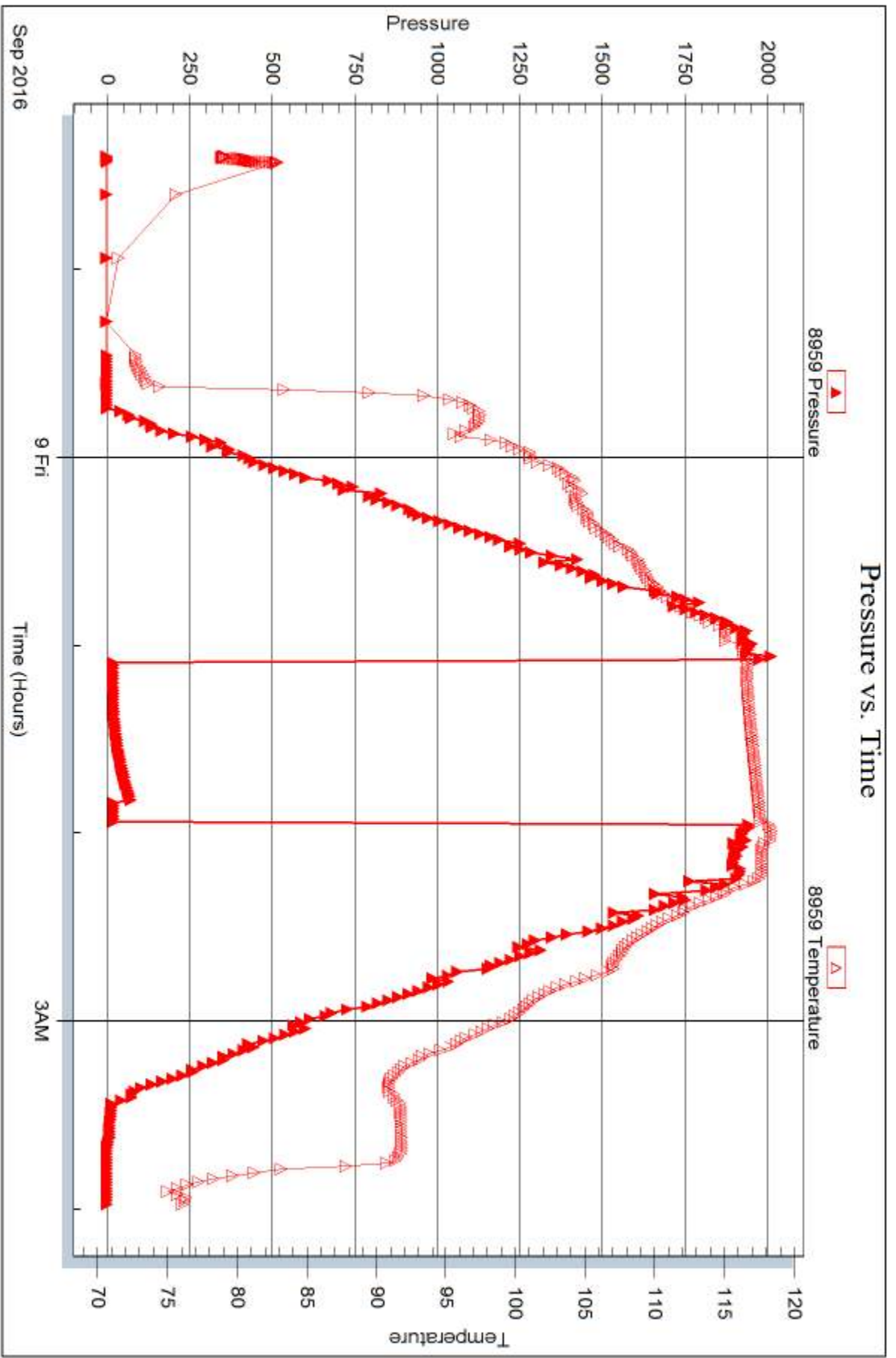
Serial #:

Laboratory Name:

Laboratory Location:

Recovery Comments:







## DRILL STEM TEST REPORT

Prepared For: **Carmen Schmitt, Inc.**

PO Box 47  
Great Bend, KS 67530

ATTN: Brad Rine

### **CEO Trust #1-14**

### **14-14s-26w Gove,KS**

Start Date: 2016.09.09 @ 12:17:46

End Date: 2016.09.09 @ 16:16:46

Job Ticket #: 61277                      DST #: 3

Trilobite Testing, Inc  
PO Box 362 Hays, KS 67601  
ph: 785-625-4778 fax: 785-625-5620

Printed: 2016.09.12 @ 09:10:58



**TRILOBITE TESTING, INC**

# DRILL STEM TEST REPORT

Carmen Schmitt, Inc.  
 PO Box 47  
 Great Bend, KS 67530  
 ATTN: Brad Rine

**14-14s-26w Gove, KS**  
**CEO Trust #1-14**  
 Job Ticket: 61277 **DST#: 3**  
 Test Start: 2016.09.09 @ 12:17:46

## GENERAL INFORMATION:

Formation: **LKC "L"**  
 Deviated: No Whipstock: ft (KB)  
 Time Tool Opened: 13:41:16  
 Time Test Ended: 16:16:46  
 Interval: **4030.00 ft (KB) To 4066.00 ft (KB) (TVD)**  
 Total Depth: 4066.00 ft (KB) (TVD)  
 Hole Diameter: 7.88 inches Hole Condition: Fair  
 Test Type: Conventional Bottom Hole (Reset)  
 Tester: Brannan Lonsdale  
 Unit No: 73  
 Reference Elevations: 2477.00 ft (KB)  
 2472.00 ft (CF)  
 KB to GR/CF: 5.00 ft

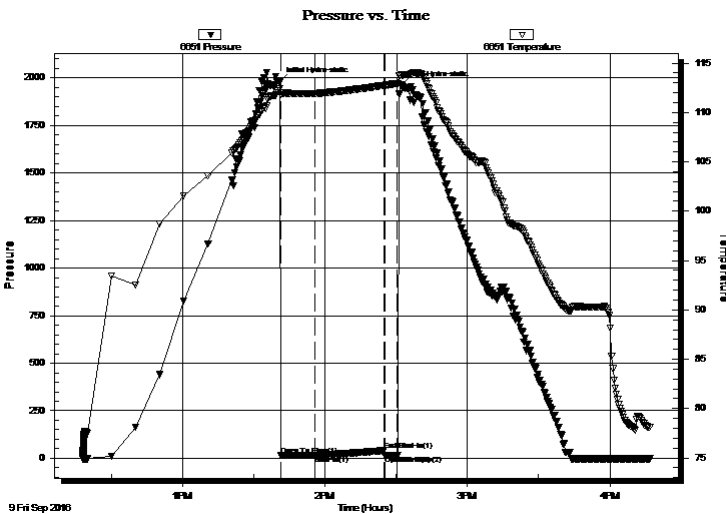
## Serial #: 6651

Inside

Press@RunDepth: 15.99 psig @ 4063.00 ft (KB) Capacity: 8000.00 psig  
 Start Date: 2016.09.09 End Date: 2016.09.09 Last Calib.: 2016.09.09  
 Start Time: 12:17:47 End Time: 16:16:46 Time On Btm: 2016.09.09 @ 13:40:46  
 Time Off Btm: 2016.09.09 @ 14:31:46

TEST COMMENT: 15- IF- Surface blow died in 8 mins  
 30- IS- No blow  
 05- FF- No blow Pulled tool

## PRESSURE SUMMARY



Time (Min.)	Pressure (psig)	Temp (deg F)	Annotation
0	1977.97	112.44	Initial Hydro-static
1	15.43	111.84	Open To Flow (1)
15	15.99	111.93	Shut-In(1)
44	40.26	112.75	End Shut-In(1)
45	15.88	112.75	Open To Flow (2)
50	16.54	112.94	Shut-In(2)
51	1961.26	113.75	Final Hydro-static

## Recovery

Length (ft)	Description	Volume (bbl)
2.00	M	0.01

\* Recovery from multiple tests

## Gas Rates

Choke (inches)	Pressure (psig)	Gas Rate (Mcf/d)







**TRILOBITE  
TESTING, INC**

# DRILL STEM TEST REPORT

**TOOL DIAGRAM**

Carmen Schmitt, Inc.

**14-14s-26w Gove,KS**

PO Box 47  
Great Bend, KS 67530

**CEO Trust #1-14**

Job Ticket: 61277

**DST#: 3**

ATTN: Brad Rine

Test Start: 2016.09.09 @ 12:17:46

## Tool Information

Drill Pipe:	Length: 3991.00 ft	Diameter: 3.82 inches	Volume: 56.57 bbl	Tool Weight:	2500.00 lb
Heavy Wt. Pipe:	Length: ft	Diameter: inches	Volume: - bbl	Weight set on Packer:	25000.00 lb
Drill Collar:	Length: 29.00 ft	Diameter: 2.25 inches	Volume: 0.14 bbl	Weight to Pull Loose:	57000.00 lb
			<u>Total Volume:</u> - bbl	Tool Chased	0.00 ft
Drill Pipe Above KB:	17.00 ft			String Weight: Initial	52000.00 lb
Depth to Top Packer:	4030.00 ft			Final	52000.00 lb
Depth to Bottom Packer:	ft				
Interval between Packers:	36.00 ft				
Tool Length:	63.00 ft				
Number of Packers:	2	Diameter: 6.75 inches			

Tool Comments:

## Tool Description

Tool Description	Length (ft)	Serial No.	Position	Depth (ft)	Accum. Lengths
Change Over Sub	1.00			4004.00	
Shut In Tool	5.00			4009.00	
Hydraulic tool	5.00			4014.00	
Jars	5.00			4019.00	
Safety Joint	2.00			4021.00	
Packer	5.00			4026.00	27.00 Bottom Of Top Packer
Packer	4.00			4030.00	
Stubb	1.00			4031.00	
Perforations	32.00			4063.00	
Recorder	0.00	6651	Inside	4063.00	
Recorder	0.00	8959	Outside	4063.00	
Bullnose	3.00			4066.00	36.00 Bottom Packers & Anchor

**Total Tool Length: 63.00**



**TRILOBITE  
TESTING, INC**

# DRILL STEM TEST REPORT

**FLUID SUMMARY**

Carmen Schmitt, Inc.

**14-14s-26w Gove,KS**

PO Box 47  
Great Bend, KS 67530

**CEO Trust #1-14**

Job Ticket: 61277

**DST#: 3**

ATTN: Brad Rine

Test Start: 2016.09.09 @ 12:17:46

## Mud and Cushion Information

Mud Type: Gel Chem

Cushion Type:

Oil API:

deg API

Mud Weight: 9.00 lb/gal

Cushion Length:

ft

Water Salinity:

ppm

Viscosity: 59.00 sec/qt

Cushion Volume:

bbbl

Water Loss: 6.78 in<sup>3</sup>

Gas Cushion Type:

Resistivity: ohm.m

Gas Cushion Pressure:

psig

Salinity: 2500.00 ppm

Filter Cake: inches

## Recovery Information

Recovery Table

Length ft	Description	Volume bbl
2.00	M	0.010

Total Length: 2.00 ft      Total Volume: 0.010 bbl

Num Fluid Samples: 0

Num Gas Bombs: 0

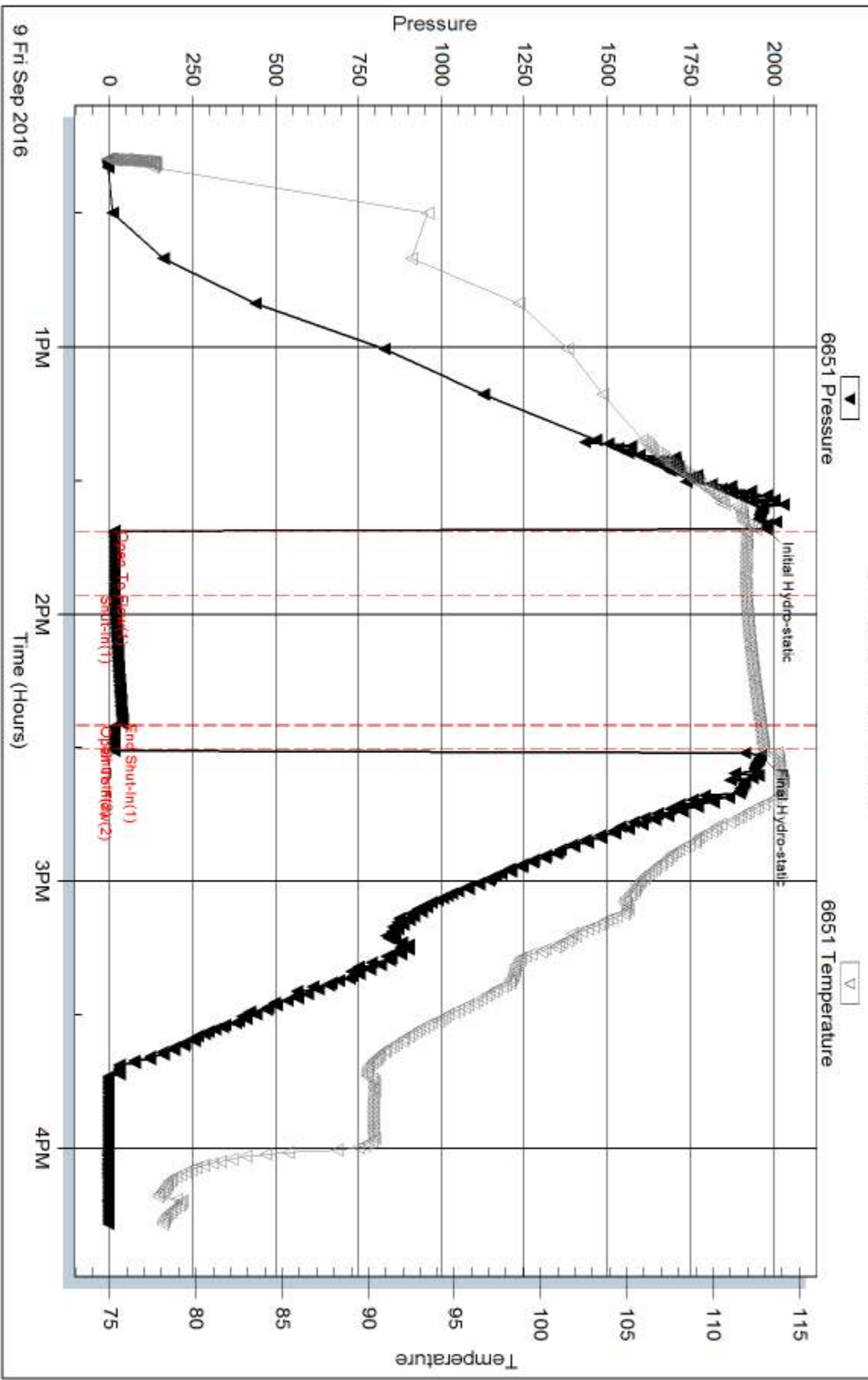
Serial #:

Laboratory Name:

Laboratory Location:

Recovery Comments:

### Pressure vs. Time

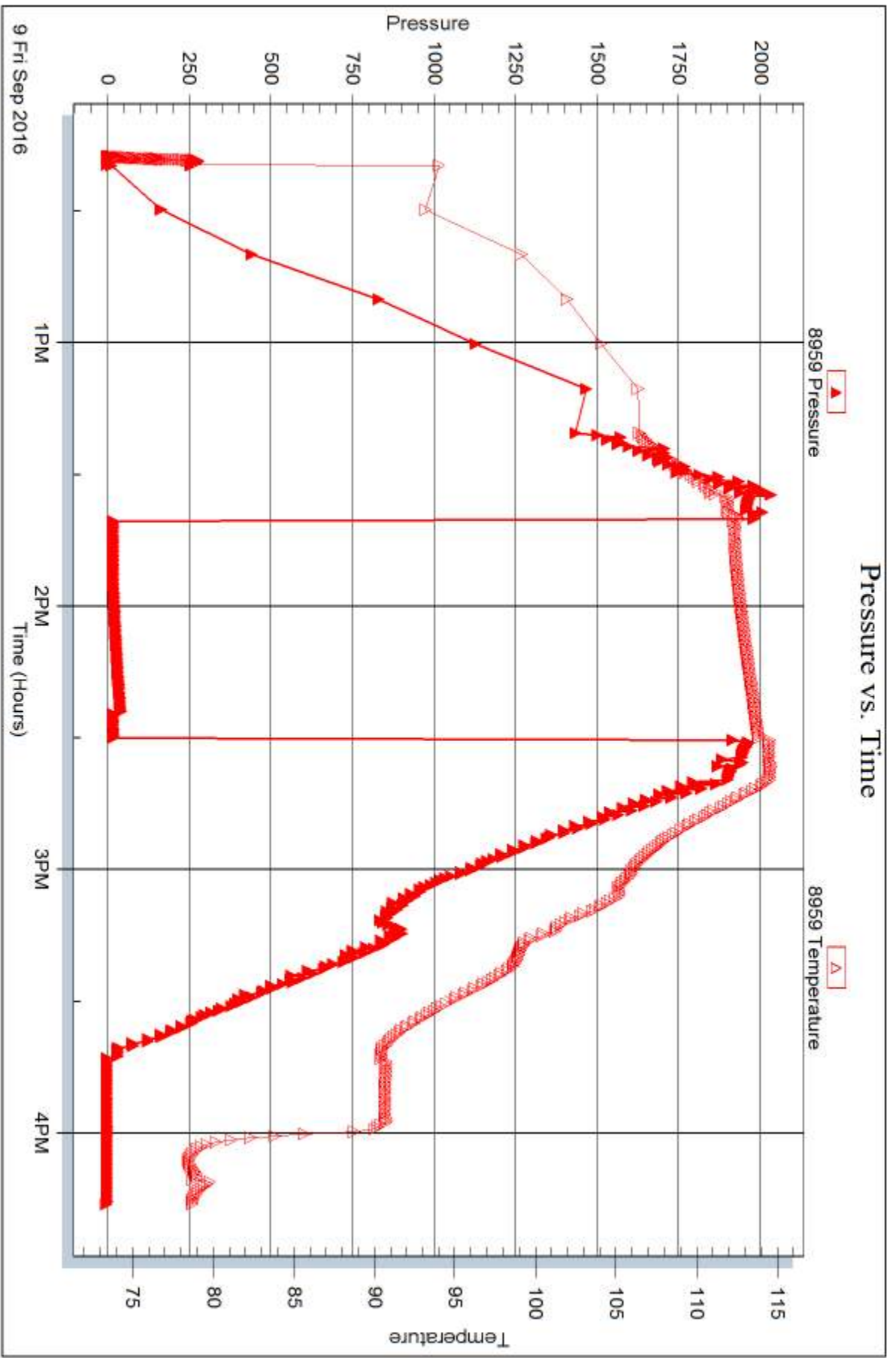


Serial #: 8959

Outside Carmen Schmitt, Inc.

CEO Trust #1-14

DST Test Number: 3



Trilobite Testing, Inc

Ref. No: 61277

Printed: 2016.09.12 @ 09:10:59



## DRILL STEM TEST REPORT

Prepared For: **Carmen Schmitt, Inc.**

PO Box 47  
Great Bend, KS 67530

ATTN: Brad Rine

### **CEO Trust #1-14**

### **14-14s-26w Gove,KS**

Start Date: 2016.09.10 @ 14:05:33

End Date: 2016.09.10 @ 19:46:03

Job Ticket #: 61278                      DST #: 4

Trilobite Testing, Inc  
PO Box 362 Hays, KS 67601  
ph: 785-625-4778 fax: 785-625-5620

Printed: 2016.09.12 @ 09:10:26



**TRILOBITE TESTING, INC**

# DRILL STEM TEST REPORT

Carmen Schmitt, Inc.  
 PO Box 47  
 Great Bend, KS 67530  
 ATTN: Brad Rine

**14-14s-26w Gove,KS**  
**CEO Trust #1-14**  
 Job Ticket: 61278 **DST#: 4**  
 Test Start: 2016.09.10 @ 14:05:33

## GENERAL INFORMATION:

Formation: **Ft Scott & Cherokee**  
 Deviated: No Whipstock: ft (KB)  
 Time Tool Opened: 17:03:33  
 Time Test Ended: 19:46:03  
 Interval: **4246.00 ft (KB) To 4315.00 ft (KB) (TVD)**  
 Total Depth: 4315.00 ft (KB) (TVD)  
 Hole Diameter: 7.88 inches Hole Condition: Fair  
 Test Type: Conventional Bottom Hole (Reset)  
 Tester: Brannan Lonsdale  
 Unit No: 73  
 Reference Elevations: 2477.00 ft (KB)  
 2472.00 ft (CF)  
 KB to GR/CF: 5.00 ft

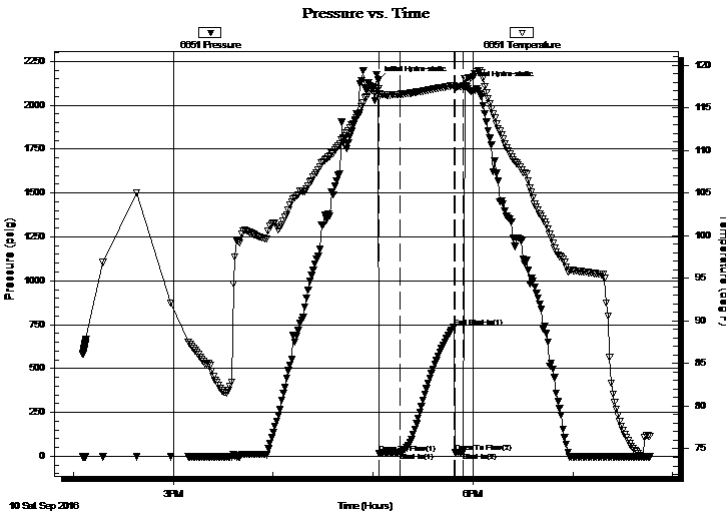
## Serial #: 6651

Inside

Press@RunDepth: 20.41 psig @ 4278.00 ft (KB) Capacity: 8000.00 psig  
 Start Date: 2016.09.10 End Date: 2016.09.10 Last Calib.: 2016.09.10  
 Start Time: 14:05:34 End Time: 19:46:03 Time On Btm: 2016.09.10 @ 17:03:03  
 Time Off Btm: 2016.09.10 @ 17:55:33

TEST COMMENT: 15- IF- Surface blow died in 7 mins  
 30- IS- No blow  
 05- FF- No blow Pulled tool

## PRESSURE SUMMARY



Time (Min.)	Pressure (psig)	Temp (deg F)	Annotation
0	2142.69	117.21	Initial Hydro-static
1	18.36	116.25	Open To Flow (1)
13	20.41	116.56	Shut-In(1)
46	735.47	117.62	End Shut-In(1)
46	21.64	117.39	Open To Flow (2)
51	22.28	117.55	Shut-In(2)
53	2113.78	118.39	Final Hydro-static

## Recovery

Length (ft)	Description	Volume (bbl)
5.00	M	0.02

\* Recovery from multiple tests

## Gas Rates

Choke (inches)	Pressure (psig)	Gas Rate (Mcf/d)







**TRILOBITE  
TESTING, INC**

# DRILL STEM TEST REPORT

**TOOL DIAGRAM**

Carmen Schmitt, Inc.

**14-14s-26w Gove,KS**

PO Box 47  
Great Bend, KS 67530

**CEO Trust #1-14**

Job Ticket: 61278

**DST#: 4**

ATTN: Brad Rine

Test Start: 2016.09.10 @ 14:05:33

## Tool Information

Drill Pipe:	Length: 4212.00 ft	Diameter: 3.82 inches	Volume: 59.71 bbl	Tool Weight: 2500.00 lb
Heavy Wt. Pipe:	Length: ft	Diameter: inches	Volume: - bbl	Weight set on Packer: 25000.00 lb
Drill Collar:	Length: 29.00 ft	Diameter: 2.25 inches	Volume: 0.14 bbl	Weight to Pull Loose: 54000.00 lb
			<u>Total Volume: - bbl</u>	Tool Chased 0.00 ft
Drill Pipe Above KB:	22.00 ft			String Weight: Initial 52000.00 lb
Depth to Top Packer:	4246.00 ft			Final 52000.00 lb
Depth to Bottom Packer:	ft			
Interval between Packers:	69.00 ft			
Tool Length:	96.00 ft			
Number of Packers:	2	Diameter: 6.75 inches		

Tool Comments:

## Tool Description

**Length (ft) Serial No. Position Depth (ft) Accum. Lengths**

Tool Description	Length (ft)	Serial No.	Position	Depth (ft)	Accum. Lengths
Change Over Sub	1.00			4220.00	
Shut In Tool	5.00			4225.00	
Hydraulic tool	5.00			4230.00	
Jars	5.00			4235.00	
Safety Joint	2.00			4237.00	
Packer	5.00			4242.00	27.00 Bottom Of Top Packer
Packer	4.00			4246.00	
Stubb	1.00			4247.00	
Perforations	31.00			4278.00	
Recorder	0.00	6651	Inside	4278.00	
Recorder	0.00	8959	Outside	4278.00	
Change Over Sub	1.00			4279.00	
Drill Pipe	32.00			4311.00	
Change Over Sub	1.00			4312.00	
Bullnose	3.00			4315.00	69.00 Bottom Packers & Anchor

**Total Tool Length: 96.00**



**TRILOBITE  
TESTING, INC**

# DRILL STEM TEST REPORT

**FLUID SUMMARY**

Carmen Schmitt, Inc.

**14-14s-26w Gove,KS**

PO Box 47  
Great Bend, KS 67530

**CEO Trust #1-14**

Job Ticket: 61278

**DST#: 4**

ATTN: Brad Rine

Test Start: 2016.09.10 @ 14:05:33

## Mud and Cushion Information

Mud Type: Gel Chem

Cushion Type:

Oil API:

deg API

Mud Weight: 9.00 lb/gal

Cushion Length:

ft

Water Salinity:

ppm

Viscosity: 57.00 sec/qt

Cushion Volume:

bbbl

Water Loss: 6.78 in<sup>3</sup>

Gas Cushion Type:

Resistivity: ohm.m

Gas Cushion Pressure:

psig

Salinity: 2300.00 ppm

Filter Cake: inches

## Recovery Information

Recovery Table

Length ft	Description	Volume bbl
5.00	M	0.025

Total Length: 5.00 ft      Total Volume: 0.025 bbl

Num Fluid Samples: 0

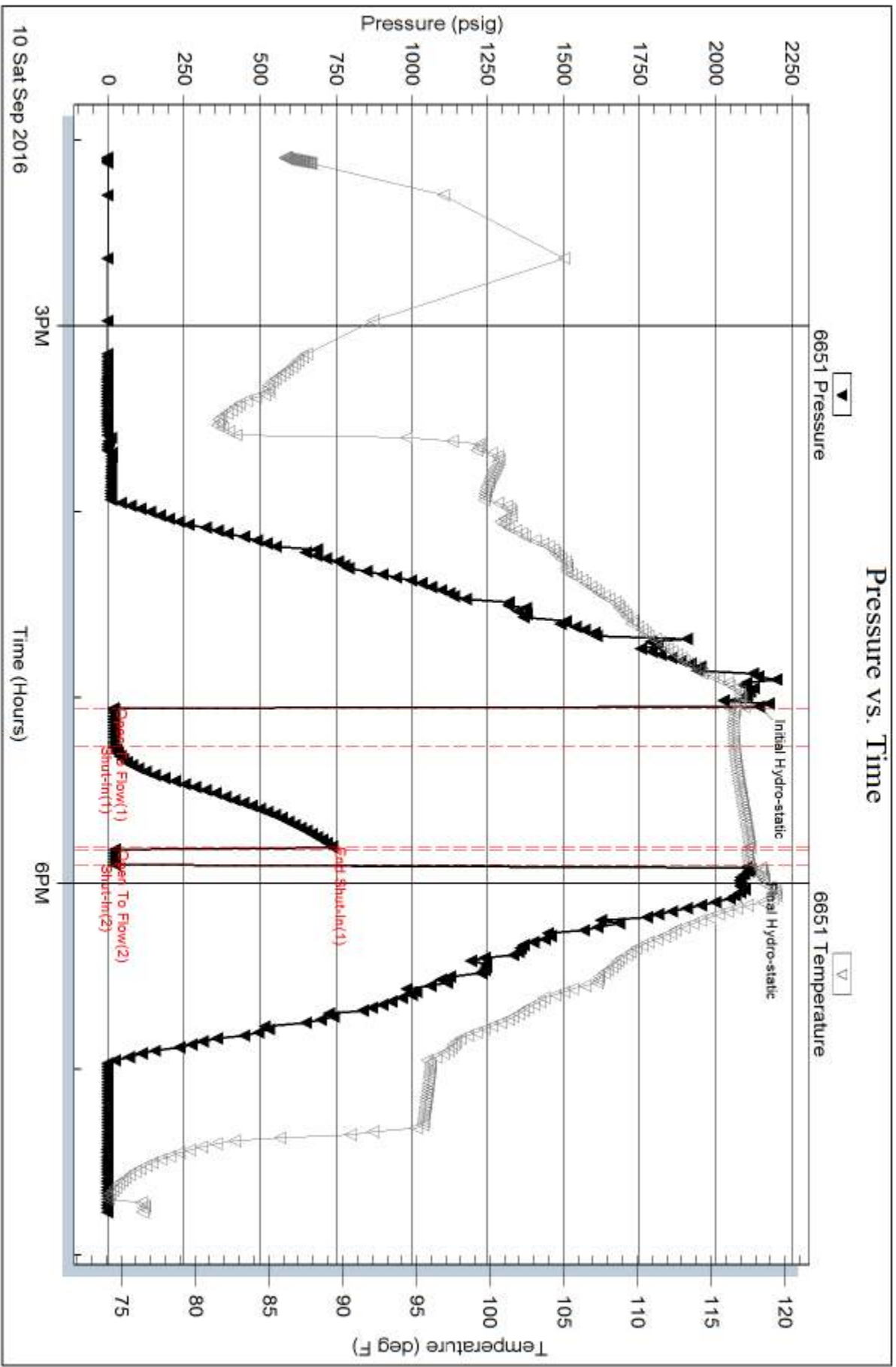
Num Gas Bombs: 0

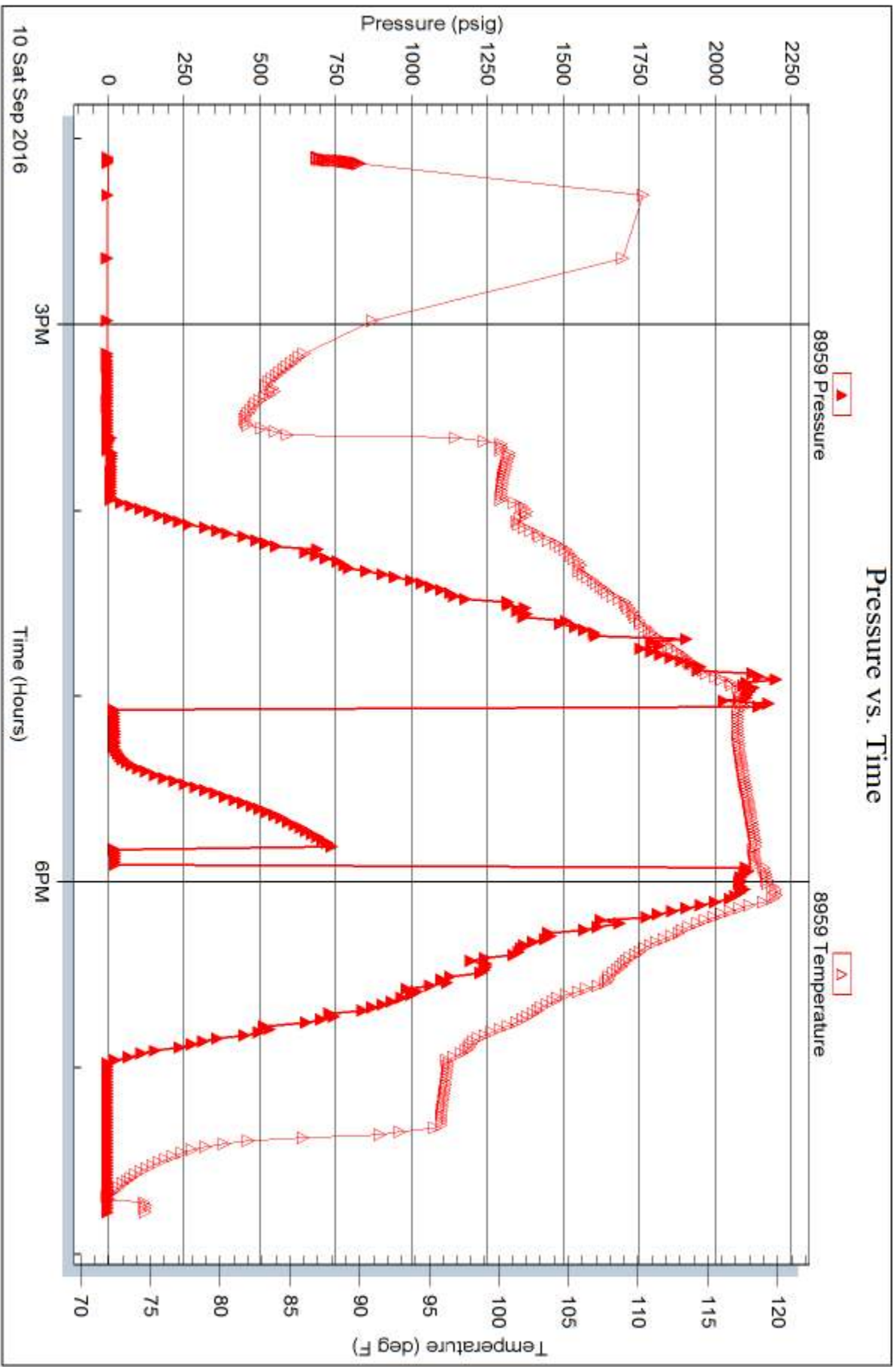
Serial #:

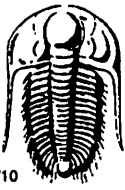
Laboratory Name:

Laboratory Location:

Recovery Comments:







# TRILOBITE TESTING INC.

1515 Commerce Parkway • Hays, Kansas 67601

## Test Ticket

NO. 58075

Well Name & No. CEO Trust 1-14 Test No. 1 Date 09/08/2016  
 Company Carmen Schmitt, Inc Elevation 2477 KB 2472 GL  
 Address PO BOX 47 Great Bend KS 67530  
 Co. Rep / Geo. Brad Rine Rig Murfin 16  
 Location: Sec. 14 Twp. 14s Rge. 26 w Co. Grove State KS

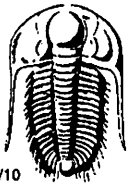
Interval Tested 3925 - 3960 Zone Tested LKC 'H'  
 Anchor Length 35 Drill Pipe Run 3895 Mud Wt. 8.9  
 Top Packer Depth 3920 Drill Collars Run 29 Vis 60+  
 Bottom Packer Depth 3925 Wt. Pipe Run \_\_\_\_\_ WL 6.8  
 Total Depth 3960 Chlorides 1400 ppm System LCM 3H  
 Blow Description IF - 1/2 inch Blow thru out  
ISI - No Blow  
FF - No Blow j pulled tool

Rec	Feet of	%gas	%oil	%water	%mud
<u>20</u>	<u>Mud</u>			<u>100</u>	
Rec	Feet of	%gas	%oil	%water	%mud
Rec	Feet of	%gas	%oil	%water	%mud
Rec	Feet of	%gas	%oil	%water	%mud
Rec	Feet of	%gas	%oil	%water	%mud

Rec Total 20 BHT 115° Gravity — API RW — @ — ° F Chlorides — ppm

(A) Initial Hydrostatic <u>1940</u>	<input checked="" type="checkbox"/> Test <u>1050</u>	T-On Location <u>1:27</u>
(B) First Initial Flow <u>16</u>	<input checked="" type="checkbox"/> Jars <u>250</u>	T-Started <del>5:47</del> <u>1:47</u>
(C) First Final Flow <u>20</u>	<input checked="" type="checkbox"/> Safety Joint <u>75</u>	T-Open <u>5:42</u>
(D) Initial Shut-In <u>1201</u>	<input type="checkbox"/> Circ Sub _____	T-Pulled <u>6:32</u>
(E) Second Initial Flow <u>22</u>	<input type="checkbox"/> Hourly Standby _____	T-Out <u>11:05</u>
(F) Second Final Flow <u>24</u>	<input checked="" type="checkbox"/> Mileage <u>130 RT</u> 97.50	Comments _____
(G) Final Shut-In <u>—</u>	<input type="checkbox"/> Sampler _____	
(H) Final Hydrostatic <u>1923</u>	<input type="checkbox"/> Straddle _____	<input type="checkbox"/> Ruined Shale Packer _____
Initial Open <u>15</u>	<input type="checkbox"/> Shale Packer _____	<input type="checkbox"/> Ruined Packer _____
Initial Shut-In <u>30</u>	<input type="checkbox"/> Extra Packer _____	<input type="checkbox"/> Extra Copies _____
Final Flow <u>5</u>	<input type="checkbox"/> Extra Recorder _____	Sub Total <u>0</u>
Final Shut-In <u>↑</u>	<input type="checkbox"/> Day Standby _____	Total <u>1472.50</u>
	<input type="checkbox"/> Accessibility _____	MP/DST Disc't _____
	Sub Total <u>1472.50</u>	

Approved By \_\_\_\_\_ Our Representative Brian Lonsdale  
 Trilobite Testing Inc. shall not be liable for damaged of any kind of the property or personnel of the one for whom a test is made, or for any loss suffered or sustained, directly or indirectly, through the use of its equipment, or its statements or opinion concerning the results of any test, tools lost or damaged in the hole shall be paid for at cost by the party for whom the test is made.



# TRILOBITE TESTING INC.

1515 Commerce Parkway • Hays, Kansas 67601

## Test Ticket

NO. 61276

Well Name & No. CEO TRUST #1 Test No. 2 Date 09/08/2016  
 Company Carmen Schmitt Inc Elevation 2477 KB 2472 GL  
 Address PO BOX 47 Great Bend KS 67530  
 Co. Rep / Geo. Brad Rine Rig Murfin #16  
 Location: Sec. 14 Twp. 14s Rge. 26w Co. Gore State KS

Interval Tested 4007 - 4035 Zone Tested LKC 'K'  
 Anchor Length 28 Drill Pipe Run 3959 Mud Wt. 9.4  
 Top Packer Depth 4002 Drill Collars Run 29 Vis 53  
 Bottom Packer Depth 4005 Wt. Pipe Run \_\_\_\_\_ WL 6.8  
 Total Depth 4035 Chlorides 1500 ppm System LCM 3#  
 Blow Description IF - Surface Blow; died in 3 minutes  
ISI - No Blow  
FF - No Blow; Pulled tool @ 5 minutes

Rec	Feet of	%gas	%oil	%water	%mud
<u>10</u>	<u>Mud w/ few oil spots in tool</u>			<u>100</u>	
Rec _____	Feet of _____	%gas _____	%oil _____	%water _____	%mud _____
Rec _____	Feet of _____	%gas _____	%oil _____	%water _____	%mud _____
Rec _____	Feet of _____	%gas _____	%oil _____	%water _____	%mud _____
Rec _____	Feet of _____	%gas _____	%oil _____	%water _____	%mud _____

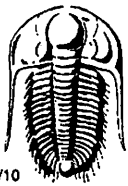
Rec Total 10 BHT 117 Gravity \_\_\_\_\_ API RW \_\_\_\_\_ @ \_\_\_\_\_ ° F Chlorides \_\_\_\_\_ ppm

(A) Initial Hydrostatic 1975  Test 1150 T-On Location 22:10  
 (B) First Initial Flow 16  Jars 250 T-Started 22:23  
 (C) First Final Flow 17  Safety Joint 75 T-Open 1:04 09/09/2016  
 (D) Initial Shut-In 71  Circ Sub \_\_\_\_\_ T-Pulled 1:54  
 (E) Second Initial Flow 17  Hourly Standby \_\_\_\_\_ T-Out 3:58  
 (F) Second Final Flow 17  Mileage 130RT 97.50 Comments \_\_\_\_\_  
 (G) Final Shut-In \_\_\_\_\_  Sampler \_\_\_\_\_  
 (H) Final Hydrostatic 1941  Straddle \_\_\_\_\_  Ruined Shale Packer \_\_\_\_\_

Initial Open 15  Shale Packer \_\_\_\_\_  Ruined Packer \_\_\_\_\_  
 Initial Shut-In 30  Extra Packer \_\_\_\_\_  Extra Copies \_\_\_\_\_  
 Final Flow 5  Extra Recorder \_\_\_\_\_ Sub Total 0  
 Final Shut-In \_\_\_\_\_  Day Standby \_\_\_\_\_ Total 1572.50  
 \_\_\_\_\_  Accessibility \_\_\_\_\_ MP/DST Disc't \_\_\_\_\_  
 Sub Total 1572.50

Approved By \_\_\_\_\_ Our Representative Danman Lonsdale Spencer

Trilobite Testing Inc. shall not be liable for damaged of any kind of the property or personnel of the one for whom a test is made, or for any loss suffered or sustained, directly or indirectly, through the use of its equipment, or its statements or opinion concerning the results of any test, tools lost or damaged in the hole shall be paid for at cost by the party for whom the test is made.



# TRILOBITE TESTING INC.

1515 Commerce Parkway • Hays, Kansas 67601

## Test Ticket

NO. 61277

Well Name & No. CEO Trust #1-14 Test No. 3 Date 9/9/16  
 Company Carmen Schmitt, Inc. Elevation 2477 KB 2472 GL  
 Address PO Box 47 Greer Bend, KS 67530  
 Co. Rep / Geo. Brad Rome Rig Murfin #16  
 Location: Sec. 14 Twp. 14 S Rge. 26 W Co. Core State KS

Interval Tested 4030-4066 Zone Tested UKC "L"  
 Anchor Length 36' Drill Pipe Run 3991 Mud Wt. 9.3  
 Top Packer Depth 4025 Drill Collars Run 29 Vis 59  
 Bottom Packer Depth 4030 Wt. Pipe Run — WL 6.8  
 Total Depth 4066 Chlorides 2,500 ppm System LCM 2#  
 Blow Description IF - Surface blow died in 8 min  
ISI - No blow  
PF - No blow Pulled tool

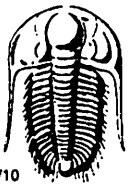
Rec	Feet of	%gas	%oil	%water	%mud
<u>2</u>	<u>M</u>				
Rec	Feet of	%gas	%oil	%water	%mud
Rec	Feet of	%gas	%oil	%water	%mud
Rec	Feet of	%gas	%oil	%water	%mud
Rec	Feet of	%gas	%oil	%water	%mud

Rec Total 2 BHT 113° Gravity \_\_\_\_\_ API RW \_\_\_\_\_ @ \_\_\_\_\_ °F Chlorides \_\_\_\_\_ ppm

(A) Initial Hydrostatic <u>1978</u>	<input checked="" type="checkbox"/> Test <u>1150</u>	T-On Location <u>1155</u>
(B) First Initial Flow <u>15</u>	<input checked="" type="checkbox"/> Jars <u>250</u>	T-Started <u>1217</u>
(C) First Final Flow <u>16</u>	<input checked="" type="checkbox"/> Safety Joint <u>75</u>	T-Open <u>1339</u>
(D) Initial Shut-In <u>40</u>	<input type="checkbox"/> Circ Sub _____	T-Pulled <u>1429</u>
(E) Second Initial Flow <u>16</u>	<input type="checkbox"/> Hourly Standby _____	T-Out <u>1616</u>
(F) Second Final Flow <u>17</u>	<input checked="" type="checkbox"/> Mileage <u>130 RT</u> 97.50	Comments _____
(G) Final Shut-In <u>—</u>	<input type="checkbox"/> Sampler _____	
(H) Final Hydrostatic <u>1961</u>	<input type="checkbox"/> Straddle _____	<input type="checkbox"/> Ruined Shale Packer _____
Initial Open <u>15</u>	<input type="checkbox"/> Shale Packer _____	<input type="checkbox"/> Ruined Packer _____
Initial Shut-In <u>30</u>	<input type="checkbox"/> Extra Packer _____	<input type="checkbox"/> Extra Copies _____
Final Flow <u>5↑</u>	<input type="checkbox"/> Extra Recorder _____	Sub Total <u>0</u>
Final Shut-In _____	<input type="checkbox"/> Day Standby _____	Total <u>1572.50</u>
	<input type="checkbox"/> Accessibility _____	MP/DST Disc't _____
	Sub Total <u>1572.50</u>	

Approved By \_\_\_\_\_ Our Representative Brannan Lonsdale

Trilobite Testing Inc. shall not be liable for damaged of any kind of the property or personnel of the one for whom a test is made, or for any loss suffered or sustained, directly or indirectly, through the use of its equipment, or its statements or opinion concerning the results of any test, tools lost or damaged in the hole shall be paid for at cost by the party for whom the test is made.



# TRILOBITE TESTING INC.

1515 Commerce Parkway • Hays, Kansas 67601

## Test Ticket

NO. 61278

Well Name & No. CEO Trust #1-14 Test No. 4 Date 9/10/16  
 Company Carmen Schmitt, Inc. Elevation 2477 KB 2472 GL  
 Address PO Box 47 Great Bend, KS 67530  
 Co. Rep / Geo. Brad Rine Rig Murphy #16  
 Location: Sec. 14 Twp. 14 S Rge. 26 W Co. Gove State KS

Interval Tested 4246-4315 Zone Tested Ft. Scott + Cherokee  
 Anchor Length 69' Drill Pipe Run 4212 Mud Wt. 9.3  
 Top Packer Depth 4241 Drill Collars Run 29 Vis 57  
 Bottom Packer Depth 4246 Wt. Pipe Run — WL 6.8  
 Total Depth 4315 Chlorides 2300 ppm System LCM 2<sup>nd</sup>  
 Blow Description IF - Surface blow died in 7 mins  
ISI - No blow  
FF - No blow Pulled tool

Rec	Feet of	%gas	%oil	%water	%mud
<u>5</u>	<u>M</u>				
Rec	Feet of	%gas	%oil	%water	%mud
Rec	Feet of	%gas	%oil	%water	%mud
Rec	Feet of	%gas	%oil	%water	%mud
Rec	Feet of	%gas	%oil	%water	%mud

Rec Total 5' BHT 118° Gravity — API RW — @ — °F Chlorides — ppm

(A) Initial Hydrostatic <u>2143</u>	<input checked="" type="checkbox"/> Test <u>1150</u>	T-On Location <u>1343</u>
(B) First Initial Flow <u>18</u>	<input checked="" type="checkbox"/> Jars <u>250</u>	T-Started <u>1405</u>
(C) First Final Flow <u>20</u>	<input checked="" type="checkbox"/> Safety Joint <u>75</u>	T-Open <u>1703</u>
(D) Initial Shut-In <u>735</u>	<input type="checkbox"/> Circ Sub <u>—</u>	T-Pulled <u>1753</u>
(E) Second Initial Flow <u>22</u>	<input type="checkbox"/> Hourly Standby <u>—</u>	T-Out <u>1946</u>
(F) Second Final Flow <u>22</u>	<input checked="" type="checkbox"/> Mileage <u>130 RT</u> 195	Comments <u>Loaded tools</u>
(G) Final Shut-In <u>—</u>	<input type="checkbox"/> Sampler <u>—</u>	<u>9/11 @ 1430</u>
(H) Final Hydrostatic <u>2114</u>	<input type="checkbox"/> Straddle <u>—</u>	<input type="checkbox"/> Ruined Shale Packer <u>—</u>
Initial Open <u>15</u>	<input type="checkbox"/> Shale Packer <u>—</u>	<input type="checkbox"/> Ruined Packer <u>—</u>
Initial Shut-In <u>30</u>	<input type="checkbox"/> Extra Packer <u>—</u>	<input type="checkbox"/> Extra Copies <u>—</u>
Final Flow <u>5↑</u>	<input type="checkbox"/> Extra Recorder <u>—</u>	Sub Total <u>0</u>
Final Shut-In <u>—</u>	<input type="checkbox"/> Day Standby <u>—</u>	Total <u>1670</u>
	<input type="checkbox"/> Accessibility <u>—</u>	MP/DST Disc't <u>—</u>
	Sub Total <u>1670</u>	

Approved By \_\_\_\_\_ Our Representative Braman Lonsdale

Trilobite Testing Inc. shall not be liable for damaged of any kind of the property or personnel of the one for whom a test is made, or for any loss suffered or sustained, directly or indirectly, through the use of its equipment, or its statements or opinion concerning the results of any test, tools lost or damaged in the hole shall be paid for at cost by the party for whom the test is made.