

M. Bradford Rine
Consulting Geologist

Certified; Licensed: AAPG/DPA, SIPES; Kansas, Wyoming
Mobile Phone: (316) 250-5941

Scale 1:240 (5"=100') Imperial
Measured Depth Log

Well Name: CEO Trust #1-14 - Carmen Schmitt, Inc.
API: 15-063-22293-00-00
Location: E2-SW-SW-NW, Section 14-14S-26W
License Number: Ks #6569
Spud Date: September 03, 2016
Surface Coordinates: 2310' FNL & 641' FWL,
Bottom Hole Coordinates: Vertical Wellbore
Ground Elevation (ft): 2472 Ft.
Logged Interval (ft): 3400 Ft. To: 4450 Ft.
Formation: Mississippi at Total Depth
Type of Drilling Fluid: Chemical
Results: D & A
Field: Wildcat
Region: Gove Co., Kansas
Drilling Completed: September 11, 2016
of Section
K.B. Elevation (ft): 2477 Ft.
Total Depth (ft): RTD 4450 Ft. LTD 4447 Ft.

Printed by MUD.LOG from WellSight Systems 1-800-447-1534 www.WellSight.com

Operator

Company: Carmen Schmitt, Inc.
Address: PO Box 47
Great Bend, Kansas 67530-0047

Geologist

Name: M. Bradford Rine
Company: Consulting Geologist, Kansas Lic. #204, Wyo #189, AAPG Cert. #2647
Address: 100 South Main, Suite #415
Wichita, Kansas 67202

Remarks

Based on sample observations, drill stem test results, and electric log evaluation, it was the decision of the Operator, to plug and abandon the "CEO Trust #1-14", on September 11, 2016.

Respectfully submitted,
M. Bradford Rine, geologist

Drilling Information

Rig: Murfin Drilling Company, Inc., Rig #16

Pump: Emsco D-375 6x14

Drawworks: Cardwell Royale

Collars: 510' 6-1/4 x 2-1/4

Drillpipe: 4-1/2" 16.6#

Toolpusher: Andy Dinkel

Mud: Mudco (Gary Schmidtberger)

Gas Detector: None

Drill Stem Tests: Trilobite (Brannan Lonsdale)

Logs: Pioneer (J. Long)

Water: Irrigation Well, appr 3 miles north (Harvey Ground)

Company Representatives:

Office: Carmen Schmitt

Field: None

Daily Drilling Status

Date:	Operations/Depth/Comments
09-03-16	MIRT, RU, Spud @ 0'
09-04-16	Drilling @ 300'
09-05-16	Trip Out of Hole to Strap Pipe @ 2150'
09-06-16	Drilling @ 2990'
09-07-16	Drilling @ 3730'
09-08-16	On Bottom/DST #1 @ 3960'
09-09-16	Circ To Condition Hole After DST 2 @ 4035'
09-10-16	Drilling @ 4250'
09-11-16	Drilling @ 4445', RTD 4450' @ 7:15 AM
09-12-16	Plugged at 12:30 am, RTD 4450'

Results:				(Well A)	Oil	(Well B)	Oil		
Carmen Schmitt, Inc.				Carmen Schmitt		Carmen Schmitt			
CEO Trust 1-14				Lipp-Harvey Unit 1-12		WP Unit 1-7			
2310'FNL & 641'FWL				330'FSL & 2450'FEL		2626'FNL & 1494'FWL			
Sec. 14-14S-26W				Sec. 12-14S-26W		Sec. 7-14S-25W			
2477 Ft. KB				2464 Ft. KB		2439 Ft. KB		Well A	Well B
Formations	Sample	E-Log	Datum	E-Log	Datum	E-Log	Datum	Comparison(s)	
Anhydrite	1951	1946	531	1924	540	1893	546	-9	-15
B/Anhydrite	1991	1987	490	1963	501	1930	509	-11	-19
Tarkio	3357	3350	-873	3319	-855	3283	-844	-18	-29
Heebner Sh.	3740	3734	-1257	3706	-1242	3668	-1229	-15	-28
Toronto	3762	3754	-1277	3726	-1262	3688	-1249	-15	-28
Lansing	3777	3773	-1296	3744	-1280	3706	-1267	-16	-29
Muncie Creek Sh.	3927	3919	-1442	3891	-1427	3856	-1417	-15	-25
Stark Sh.	4008	4002	-1525	3974	-1510	3937	-1498	-15	-27
B/Kansas City	4062	4054	-1577	4028	-1564	3992	-1553	-13	-24
Marmaton	4104	4100	-1623	4074	-1610	4036	-1597	-13	-26
Altamont	4134	4130	-1653	4096	-1632	4056	-1617	-21	-36
Pawnee	4202	4193	-1716	4174	-1710	4136	-1697	-6	-19
Ft. Scott	4263	4259	-1782	4236	-1772	4200	-1761	-10	-21
Cherokee Sh.	4290	4284	-1807	4261	-1797	4222	-1783	-10	-24
Mississippian	4273	4368	-1891	4294	-1830	4296	-1857	-61	-34
Total Depth	4450	4447	-1970	4440	-1976	4375	-1936	6	-34

Casing Record, Bit Record, Deviation Surveys

CASING:

Conductor: None

Surface: Set 8-5/8" casing @ 218', (Copeland) Cement with 175 sx Poz, 3%CC, 2%Gel. Cement did Circulate. Plug down at 5:15 AM, Sept 04, 2016.

Production: P&A, Plugged as follows: (Copeland) 16/40 poz, 4% gel, 0.25# floseal: 50 sx @ 1970', 100 sx @ 950', 50 sx @ 270', 10 sx @ 40', 50 sx in rathole, 10 sx in mousehole. Plugging completed at 8:30 p.m. 9-11-16. Riggged down rotary tools. Rig released 12:30 a.m, 9-12-16.

BITS:

No.	Size	Make	Model	Depth In	Depth Out	Hours
1	12-1/4	Varel	ERT	0	220	3.5
2	7-7/8	HTC	GX20C	220	4450	92.5

DEVIATION SURVEYS:

Deviation:	Depth:	Deviation:	Depth:
1/4*	220'	3/4*	3960'
5/8*	2167'	3/4*	4450'

DST #1: 3925-3960 (LKC H)

Times: 15-30-05-out

Initial Open: Wk Blow, built to 1/2"

Final Open: No Blow

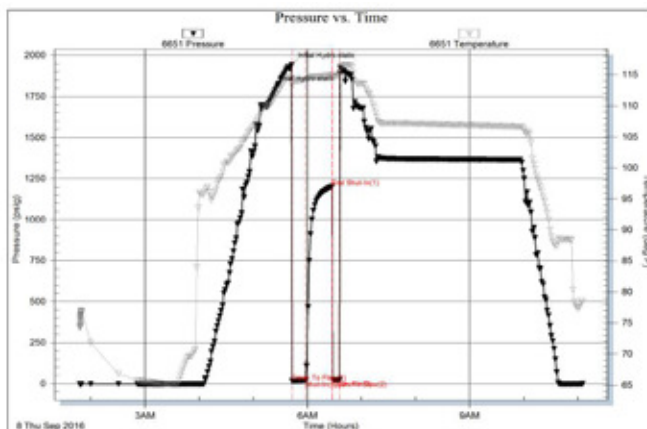
Rec: 20' mud/oil spots in tool

IHP: 1940 FHP: 1923

IFP: 16-20 FFP: 22-24

ISIP: 1201 FSIP: NA

BHT: 115°F



DST #2: 4007-4035 (LKC K)

Times: 15-30-05-out

Initial Open: Wk surf blow, died 3 min

Final Open: No Blow

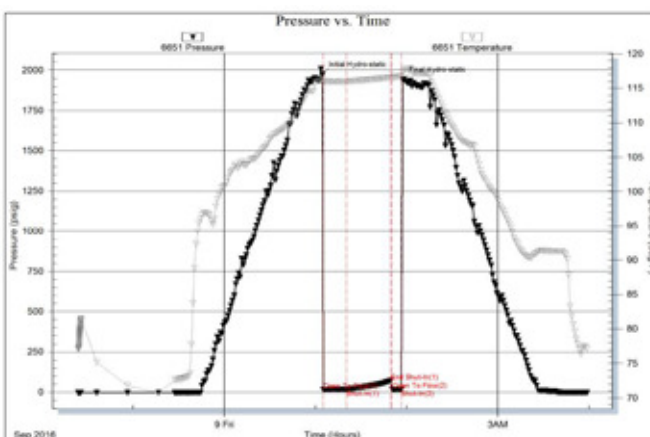
Rec: 10' mud with oil spots in tool

IHP: 1975 FHP: 1941

IFP: 16-17 FFP: 17-17

ISIP: 71 FSIP: NA

BHT: 117°F



DST #3: 4030-4066 (LKC L)

Times: 15-30-05-out

Initial Open: Wk Surf Blow, died 8 min

Final Open: No Blow

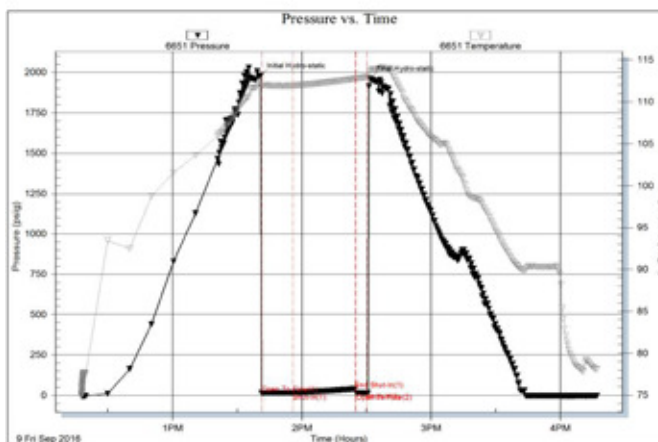
Rec: 2' mud

IHP: 1978 FHP: 1961

IFP: 15-16 FFP: 16-17

ISIP: 40 FSIP: NA

BHT: 113°F



DST #4: 4246-4315 (Ft. Scott, Cke Lime)

Times: 15-30-05-out

Initial Open: Wk Surf Blow, died 7 min

Final Open: No Blow

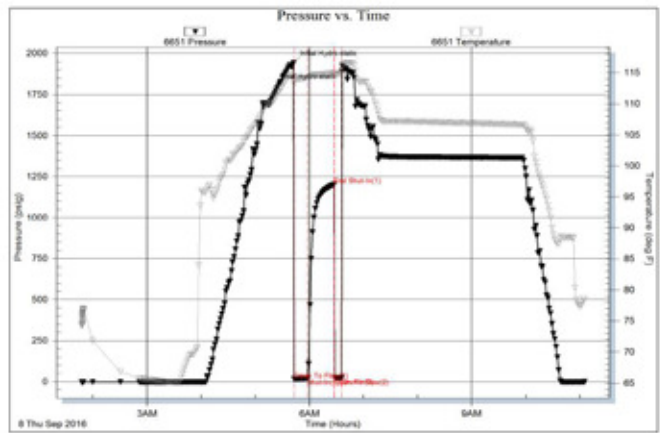
Rec:5' mud

IHP: 2143 FHP: 2114

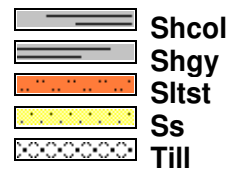
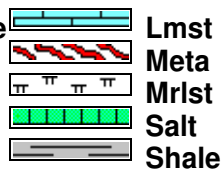
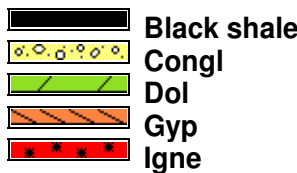
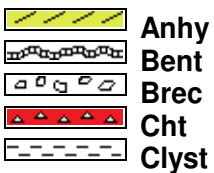
IFP: 18-20 FFP: 22-22

ISIP: 735 FSIP: NA

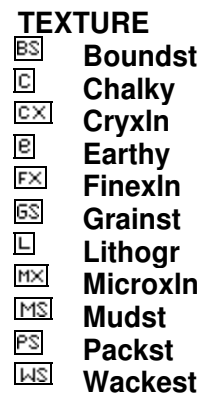
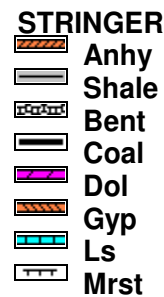
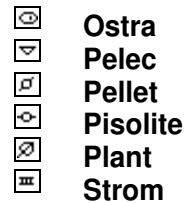
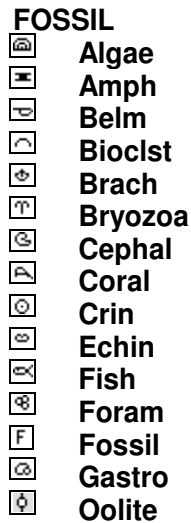
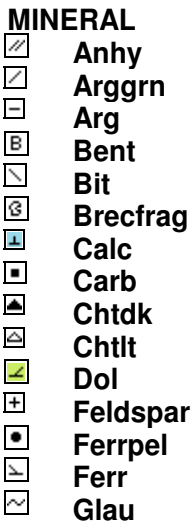
BHT: 118°F



Rock Types



Accessories



Anhydrite interval, based on unit time only:

< B/ANHYDRITE

1991 (+486)

2000

Depth Break

* Displace & Mudup @
3274 Ft., job completed @
3301 Ft.!

0 conn ROP (min/ft) 15

3400

Shales gy-d gy-grn

Limestone wh-cr-gy, fn xln, pr-fr xln por in pt, chalky to subgrainy text in pt, sli foss

Ls wh-cr-gy, fn xln, dns-pr xln por, foss in pt

Sh gy-grn, subsilty inpt

Ls wh-cr-gy, fn xln, subchalky in pt, dns-pr xln por in pt, foss

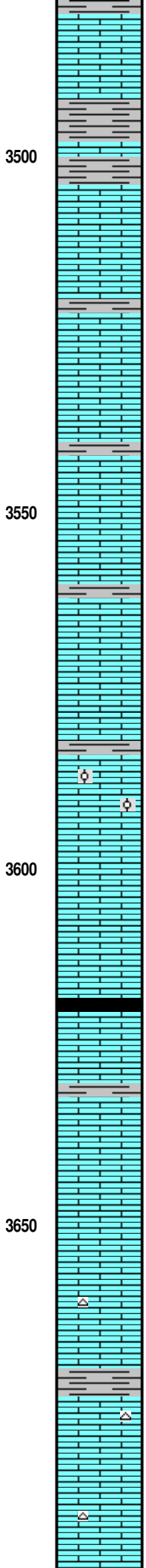
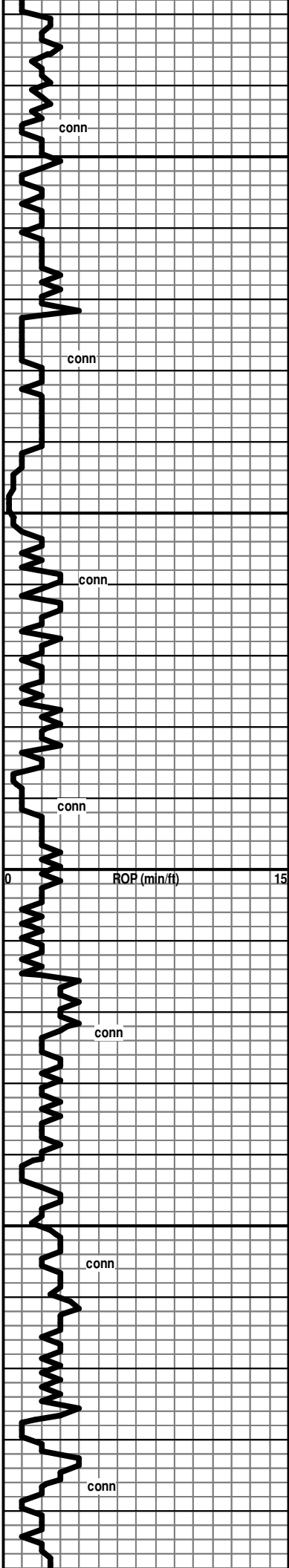
Sh gy-grn-some yellowish

Ls cr-gy-dk gy, fn xln, mostly dns, some pr xln, foss

3450

conn

conn



sh gy-dk gy

Ls cr-gy-dk gy, fn xln, mostly dns, some pr xln, foss

sh gy-dk gy

80% Sh gy-dk gy; 20% Ls cr-gy, fn xln dns

(Spls 50-70% shales, gy-dk gy)

Ls cr-gy, fn xln, some chalky, fr-fr xln por in pt, foss in pt

[No Show]

Sh gy

Ls wh-cr-gy, fn xln, fr sln por in pt, foss

Sh gy

Ls cr-tan-gy, fn xln, pr-fr xln por, some grainy text, foss

Ls cr, fn xln, pr xln por, chalky in pt, ool in pt, foss

Ls wh-cr, fn xln, pr-fr xln por in pt, subchalky in pt foss-abund foss

[No Show]

Sh black, carb

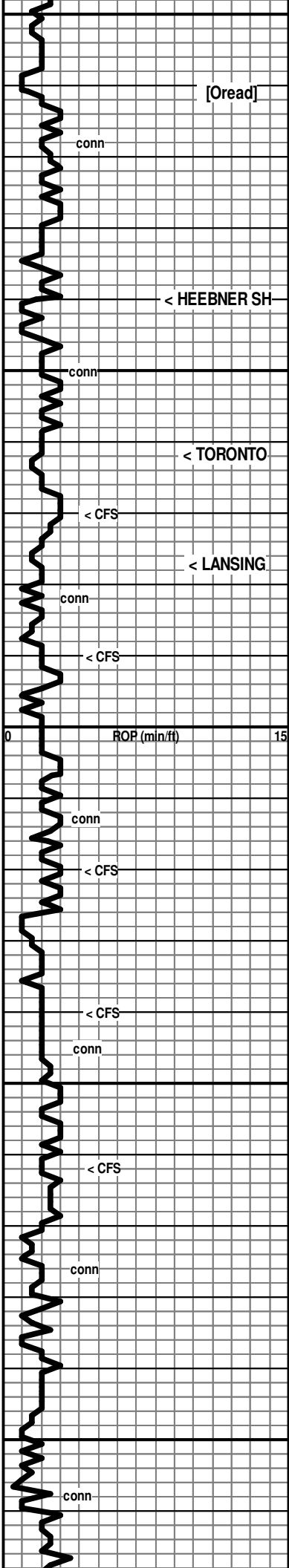
Ls wh-cr, fn xln, pr-fr xln por in pt, subchalky-chalky, in pt foss-abund foss

Ls wh-cr-gy, fn xln, fr-gd xln por in pt, scatt pp pores, some chalky, foss to abund foss

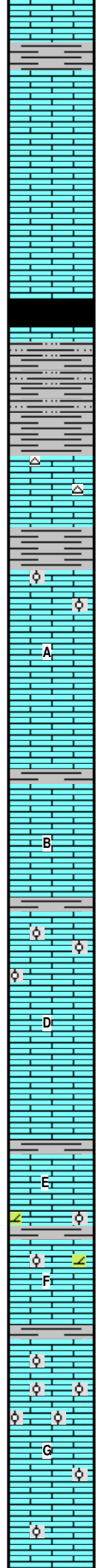
Ls wh-cr, fn xln, pr xln por in pt, scatt pp pores, some chalky, foss to abund foss, chert: fresh, gy, subtransl

[No Show]

Ls wh-cr-tan, fn xln, pr-fr xln por, foss, chert: fresh, tan, subtransl, foss/spiculitic, shales gy-grn



3700
3750
3800
3850
3900



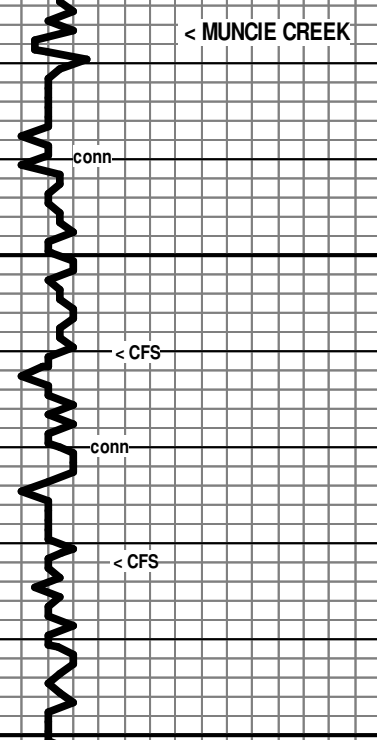
Ls wh-cr-gy, fn xln, pr-fr xln por, foss
 [No Show]
 ← 3740 (-1263)
 Sh black, carb (sli represented in 3750' spl, abund in 3760' spl)
 Sh, Silty Shale, Shaley Siltst, gy-wh-grn
 ← 3762 (1285)
 Ls wh-cr, fn xln, fr-gd xln por in pt, scatt pp pores, some chalky, foss to abund foss
 [No Show]
 Sh gy-grnish
 ← 3777 (-1300)
 Ls wh-cr, fn xln, pr-fr xln por in pt, scatt pp pores, chalky in pt, foss, ool in pt, scatt transl calcite inclusions
 [No Show]
 Ls wh-cr, fn xln, dns in pt, pr-fr xln por in pt, subgrainy text in pt, foss
 Sh gy-grn
 Ls wh-cr, fn xln, pr-fr xln por in pt, chalky in pt, foss to abund foss
 [No Show]
 Sh gy-grn
 Ls cr-tan, fn xln, dns in pt, pr-fr xln por in pt, foss, ool in pt, scatt interool pores, scatt pp pores & sm vugs
 [No Show]
 Ls cr, fn xln, pr xln por, foss
 Sh gy
 Ls wh-cr, fn xln, mostly dns with some scatt pr xln por, scatt calcite patches, foss
 [No Show]
 Sh gy-grn
 Ls wh-cr, fn xln, dolom text in pt, pr-fr xln por, foss in pt, ool in pt with scatt interool pores
 [No Show]
 Sh gy
 Ls wh-cr, fn xln, chalky in pt, pr-fr xln por in pt, ool & sli oom in pt
 [No Show]
 Ls wh-cr, fn xln, chalky in pt, pr-fr xln por in pt,
 Ls wh-cr, fn xln, chalky in pt, dns to pr xln por in pt, scatt ool, some foss

7:00 AM, September 07, 2016

Mud Check, CFS @ 3770':

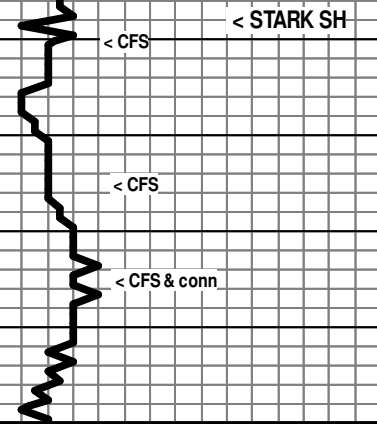
Vis	Wt	WL	LCM	PV	YP
60	8.9	6.8	3	19	28
Chl	Hd	pH	Solids		
1400	nil	11.5	4.3		

< MUNCIE CREEK



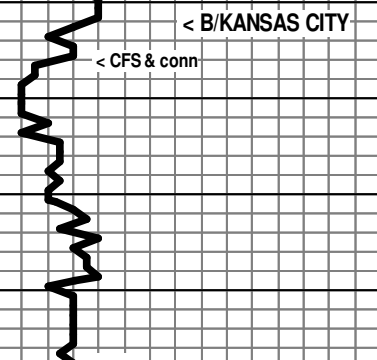
conn ROP (min/ft) 15

< STARK SH



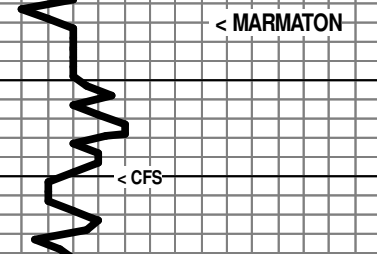
conn

< B/KANSAS CITY



conn

< MARMATON



conn

< ALTAMONT

← 3927 (-1450)

Sh black, carb (abund in 3940' spl)

Sh grn-gy-red, subsilty text in pt

Ls wh-cr, fn xln, subchalky in pt, dns to pr xln por in pt, foss, ool-well cem (some ool weath'd to gy), chert: grainy text, wh-gy, opa

No Odor, Rr pcs with mod speckled fluor, V Rr pcs per tray with sparce spotty dk stn with trace dk brn micro-drops FO on crush]

Ls wh-cr, fn xln, chalky in pt, dns to pr xln por in pt, chert: fresh, tan-or, transl

Sh gy-grn-red

Ls wh-cr-tan, vfn-fn xln, softer & subchalky to dns & firm, widely scatt pp pores, foss

[No Show]

Ls cr, fn xln, packed ool (much well-cem, Scatt interool pores) brittle

Sh gy-grn, silty text in pt

Ls wh-cr-tan, fn xln, chalky in pt, pr xln por in pt, ool (some interool pores, some well cem), Abund Chert: fresh, tan, transl

[No Show]

← 4008 (-1531)

Sh black, carb (abund in 4000'/40-min spl)

Abund gy-grn-brn & black/carb shales in 4025' 20-min spl

Ls wh-cr-gy, fn xln, chalky in pt, pr xln por in pt, some dns, foss

[No Show, above 4025']

Ls wh-cr, fn xln, subchalky in pt, pr xln por in pt, dns in pt, widely scatt poorly developed vugs, sli foss, ool in pt with scatt interool pores, sli cherty

[Mild Odor, Scatt Mod-Brt Fluor, Low-mod % pcs with Spotty Brn Stn, Trace-Sli Shows of lt brn to dk brn FO on brk, Few pcs with mod show of FO, VSli Gassy, some NVL oil]

Ls wh-cr-tan, fn xln, dns in pt, chalky in pt, pr xln por in pt, a few grainy text pcs with fr xln por, sli foss to abun foss, ool in pt (mostly well-cem)

[No Odor, Scatt dull-mod fluor, V low % pcs with spotty to patchy brn Stn, Trace to Sli Shows of Lt Brn-Dk Brn FO on brk, Few pcs with fr-gd show dk brn FO]

Ls cr-tan, fn xln, dns, foss

← 4062 (-1585)

Sh gy-dk gy-pl grn-grn-brn-red, silty in pt

Ls wh-cr-gy, v fn-fn xln, chalky in pt, some grainy with chalky cemented pcs, dns in pt, foss in pt

[No Show]

Sh gy-grn-yellowish grn, waxy to subsilty text in pt, some loose grainy pyrite pcs

← 4104 (-1627)

Ls wh-cr-tan, fn xln, dns, ool & foss in pt (well-cem)

[No Show]

Sh pl gy-gy-grn

← 4134 (-1657)

Ls cr-tan-gy fn xln, mostly dns, some chalky with scatt grains

DST #1: 3925-3960 (LKC H)
Times: 15-30-05-out
Initial Open: Wk Blow, built to 1/2"
Final Open: No Blow
Rec: 20' mud/oil spots in tool
IHP: 1940 FHP: 1923
IFP: 16-20 FFP: 22-24
ISIP: 1201 FSIP: NA
BHT: 115°F

7:00 AM, September 09, 2016

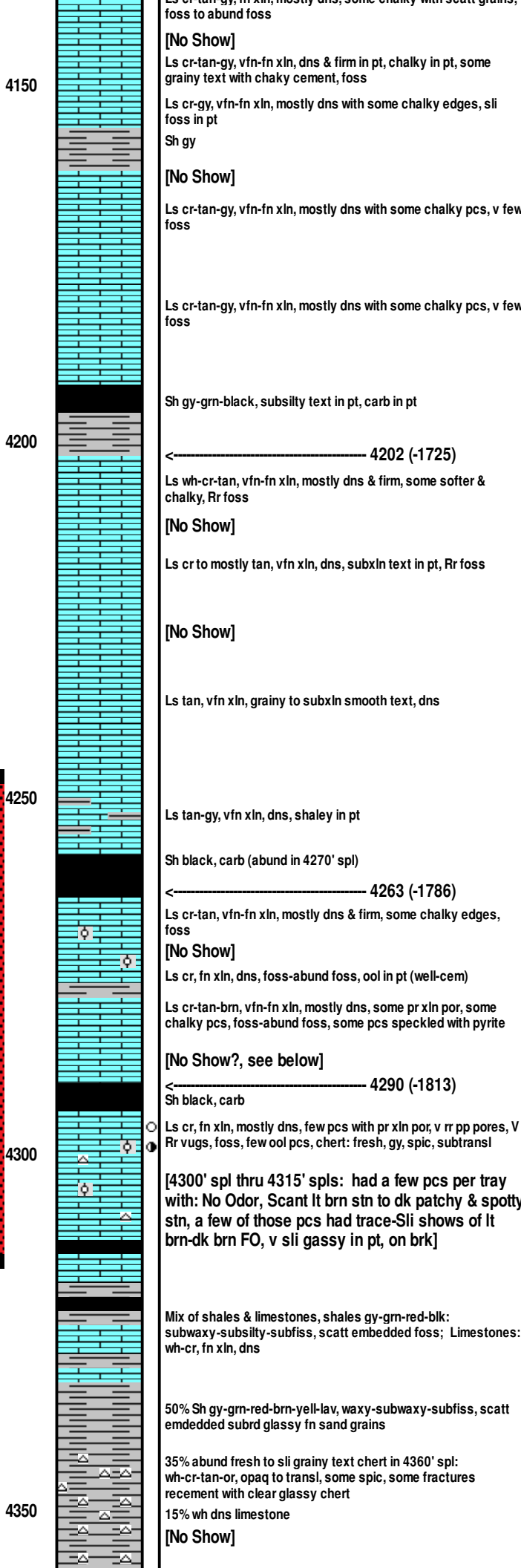
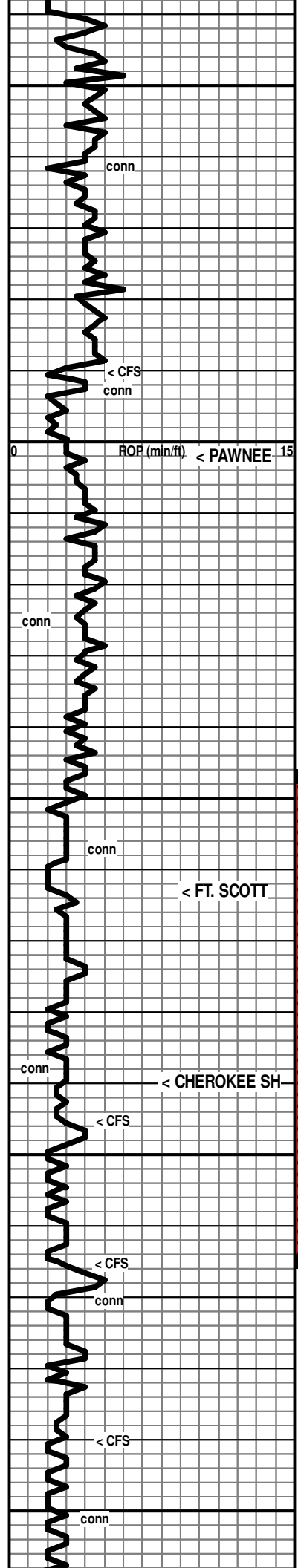
Mud Check, TOOH, waiting on rig repair @ 3960':
Vis Wt WL LCM PV YP
53 9.4 6.8 3 21 29
Chl Hd pH Solids
1500 Tr 11.5 7.8

DST #2: 4007-4035 (LKC K)
Times: 15-30-05-out
Initial Open: Wk surf blow, died 3 min
Final Open: No Blow
Rec: 10' mud with oil spots in tool
IHP: 1975 FHP: 1941
IFP: 16-17 FFP: 17-17
ISIP: 71 FSIP: NA
BHT: 117°F

7:00 AM, September 09, 2016

Mud Check, CTCH @ 4035':
Vis Wt WL LCM PV YP
59 9.3 6.8 2 19 27
Chl Hd pH Solids
2500 Tr 11.0 7.0

DST #3: 4030-4066 (LKC L)
Times: 15-30-05-out
Initial Open: Wk Surf Blow, died 8 min
Final Open: No Blow
Rec: 2' mud
IHP: 1978 FHP: 1961
IFP: 15-16 FFP: 16-17
ISIP: 40 FSIP: NA
BHT: 113°F



[No Show]
 Ls cr-tan-gy, vfn-fn xln, dns & firm in pt, chalky in pt, some grainy text with chaky cement, foss
 Ls cr-gy, vfn-fn xln, mostly dns with some chalky edges, sli foss in pt
 Sh gy

[No Show]
 Ls cr-tan-gy, vfn-fn xln, mostly dns with some chalky pcs, v few foss
 Ls cr-tan-gy, vfn-fn xln, mostly dns with some chalky pcs, v few foss

Sh gy-grn-black, subsilty text in pt, carb in pt

← 4202 (-1725)
 Ls wh-cr-tan, vfn-fn xln, mostly dns & firm, some softer & chalky, Rr foss

[No Show]
 Ls cr to mostly tan, vfn xln, dns, subxln text in pt, Rr foss

[No Show]
 Ls tan, vfn xln, grainy to subxln smooth text, dns

Ls tan-gy, vfn xln, dns, shaley in pt

Sh black, carb (abund in 4270' spl)

← 4263 (-1786)
 Ls cr-tan, vfn-fn xln, mostly dns & firm, some chalky edges, foss

[No Show]
 Ls cr, fn xln, dns, foss-abund foss, ool in pt (well-cem)

Ls cr-tan-brn, vfn-fn xln, mostly dns, some pr xln por, some chalky pcs, foss-abund foss, some pcs speckled with pyrite

[No Show?, see below]
 ← 4290 (-1813)
 Sh black, carb

Ls cr, fn xln, mostly dns, few pcs with pr xln por, v rr pp pores, V Rr vugs, foss, few ool pcs, chert: fresh, gy, spic, subtransl

[4300' spl thru 4315' spl: had a few pcs per tray with: No Odor, Scant lt brn stn to dk patchy & spotty stn, a few of those pcs had trace-Sli shows of lt brn-dk brn FO, v sli gassy in pt, on brk]

Mix of shales & limestones, shales gy-grn-red-blk: subwaxy-subsilty-subfiss, scatt embedded foss; Limestones: wh-cr, fn xln, dns

50% Sh gy-grn-red-brn-yell-lav, waxy-subwaxy-subfiss, scatt emdedded subrd glassy fn sand grains

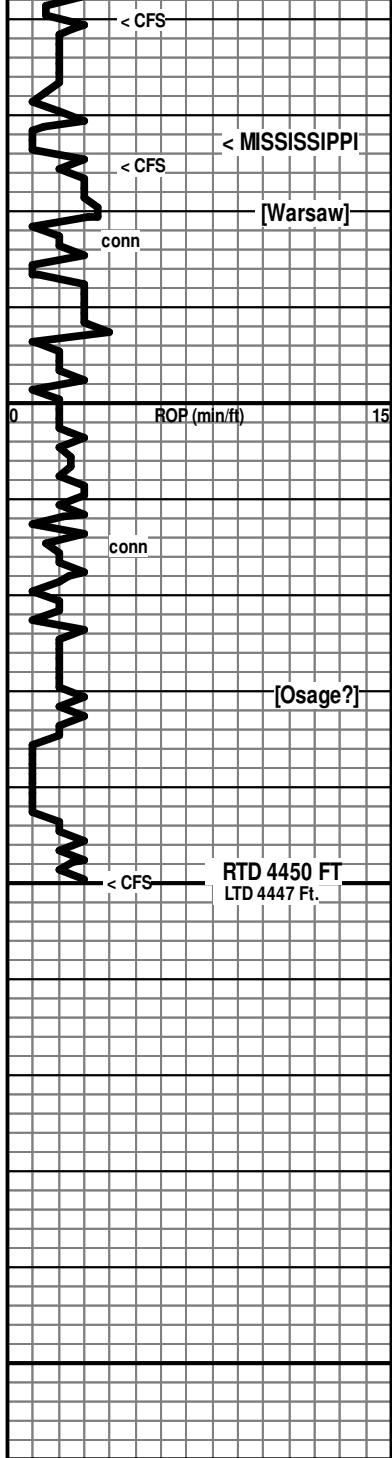
35% abund fresh to sli grainy text chert in 4360' spl: wh-cr-tan-or, opaqt to transl, some spic, some fractures recement with clear glassy chert
 15% wh dns limestone

[No Show]

7:00 AM, September 10, 2016

Mud Check, Drlg @ 4280':
 Vis Wt WL LCM PV YP
 57 9.3 6.8 2 16 25
 Chl Hd pH Solids
 2300 Tr 10.5 7.0

DST #4: 4246-4315 (Ft. Scott, Cke Lime)
 Times: 15-30-05-out
 Initial Open: Wk Surf Blow, died 7 min
 Final Open: No Blow
 Rec: 5' mud
 IHP: 2143 FHP: 2114
 IFP: 18-20 FFP: 22-22
 ISIP: 735 FSIP: NA
 BHT: 118°F



4375' spls: 60% shales gy-grn-yell-lav-red, waxy to sdy; 25% Dol cr-tan, fn xln, sucrosic, pr-fr xln por, scatt pp pores & vugs; 25% Chert wh-cr-tan, transl-opaq, fresh to subgrainy, foss in pt; Tr% md-crs sdy-cherty congl

[No Show]

← 4373 (-1896)

Dol cr, fn xln, sucrosic, pr-fr xln por, mod am't of pp pores & vugs, abund chert: mostly fresh, wh, opaq, some sli etched surfaces, some transl

[No Show]

Dol Ls & Dol cr, fn xln, sucrosic, pr-fr xln por, mod am't of pp pores & vugs, abund chert: mostly fresh, wh, opaq, some sli etched surfaces, some transl (still carrying about 50% shales)

Dol Ls, wh-cr, fn xln, dns-p rxln por, sli cherty

Dol, fn xln, pr xln por, some grainy text, sli cherty, fresh, wh-vc,transl to opaq, trace of spiculites

Dol, fn xln, pr xln por, some grainy text, some chalky cem, abund cherty, fresh, wh-vc,transl to opaq, trace of spiculites

4450' circ spls: mix of Dol & chert...Dol: wh-cr, fn xln, chalky in pt, pr xln por in pt, grainy to sucrc text; Chert: fresh, wh-cr-tan, opaq-transl, spic in pt

[No Show]

Mud Check, Short Tripping @ 4450':

Vis	Wt	WL	LCM	PV	YP
60	9.5	6.8	2	19	35
Chl	Hd	pH	Solids		
2500	20	10.5	8.4		

7:00 AM, September 11, 2016

RTD 4450 Ft., at 7:15 AM, September 11, 2016!