



**Scale 1:240 (5"=100') Imperial
Measured Depth Log**

Well Name: Out of Sight #1
Location: 7-29S-40W
License Number: API: 15-187-21331
Spud Date: 07/09/16
Surface Coordinates: 330' FNL, 1905' FEL

Region: Stanton Co., KS
Drilling Completed: 07/17/16

**Bottom Hole
Coordinates:**
Ground Elevation (ft): 3314 **K.B. Elevation (ft):** 3325
Logged Interval (ft): 4200 **To:** 5600 **Total Depth (ft):** 5600
Formation: Mississippian
Type of Drilling Fluid: Chemical

Printed by MUD.LOG from WellSight Systems 1-800-447-1534 www.WellSight.com

OPERATOR

Company: White Exploration, Inc.
Address: 1635 N. Waterfront Pkwy.
St. 100
Wichita, KS 67206

GEOLOGIST

Name: Andrew White
Company: White Exploration, Inc.
Address:

Remarks

Due to the results of DST #1, the decision was made to run production casing to test the Keyes Sand.

General Info

Drilling Contractor: Murfin Rig 21

Logs: ELI Wireline Services
Compensated Density/Neutron, Dual, Micro, Sonic

Drilling Mud: Mudco/Service Mud, Inc.

Surveys: 716'-.5, 1755'-.5, 2775'-.5, 3220'-.5, 4229'-.75, 5450' .25,

Daily Status

07/09/16: Spud well @4:45 p.m.

07/10/16: Drilling @ 1032', Ran 42 joints new 8 5/8" 24# Surface Casing, 595 sacks 65/35 Cement with 6% gel and 3% CC and 1/4# sack Pheno-seal. Followed by 225 sacks of Common Cement with 2% CC and 1/4# sack Pheno-seal

07/11/16: Waiting on cement, drill out plug @ 4:00 p.m.

07/12/16: Drilling @ 2447'

07/13/16: Drilling @ 3870'

07/14/16: Drilling @ 5107', Drill down to 5250' and circulate hole for 90 mins for bit trip. Start bit trip, pulling extremely tight, have only pulled 20 stands in 5 hours. Break Circulation for 30 min @ 4041'. Pull two more stands in next 1-1/2 hours. Decide to go back to bottom with bit and hit a bridge @ 4693'. Continue on to 4881' and lose circulation. Mix mud and raise LCM to 20#. Pull 8 stands in 30 mins to 4354' and mix more mud with 20# LCM. Have pumped 300 Bbls and still do not have circulation. Pull 10 more stands up to 4072 and mix and pump another 50 barrels of mud with 18# LCM. Are able to finish trip out of hole with bit.

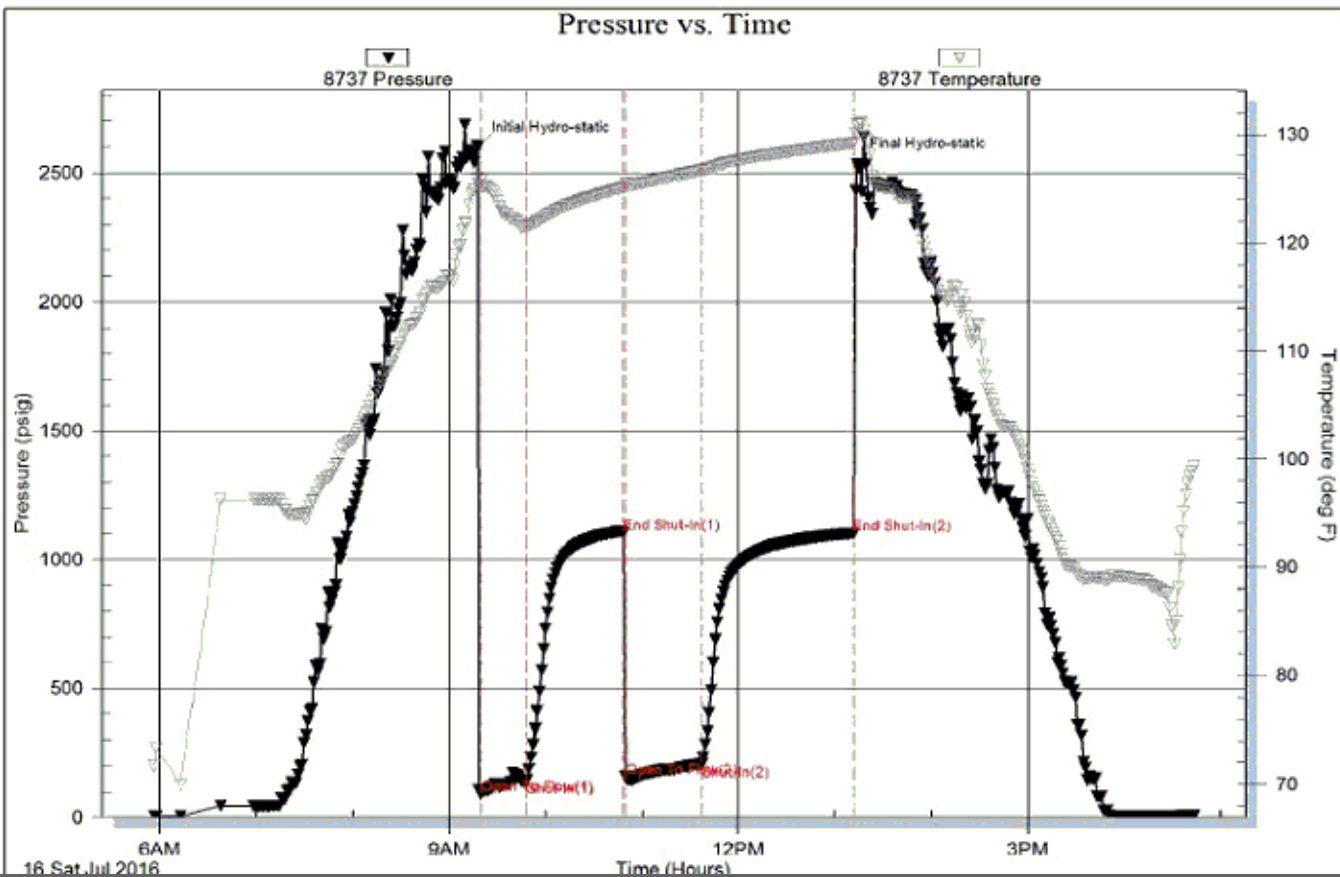
07/15/16: Circ @ 5250' with button bit, still losing fluid, have 40% returns

07/16/16: Running DST #1

07/17/16: Circ @ 5600' for logs

07/18/16: Running Production Casing

White Ex				White		Berexco	
Out of Sight #1				Arnold #1		Earl Arnold 7-3	
7-29S-40W				6-29S-41W		7-29S-40W	
330' FNL, 1905' FEL				490'FSL, 1515' FEL		335' FSL, 3040' FEL	
KB:3325				KB: 3322		KB: 3328	
Sample	Log	Datum	Relationship				
Heebner		3702	-377	-6		-11	
Lansing		3761	-436	+25		-4	
Cherokee	4538	4548	-1223	+2		-9	
Morrow	5008	5019	-1694	+6		-2	
LMM	5342	5349	-2024	-5		-14	
Miss	5520	5522	-2197	+3		+7	



ROCK TYPES

LITHOLOGY

- Anhy
- Bent
- Brec
- Cht
- Clyst
- Coal
- Congl

- Dol
- Gyp
- Igne
- Lmst
- Meta
- Mrlst
- Salt
- Shale

- Shcol
- Shgy
- Slst
- Ss
- Till

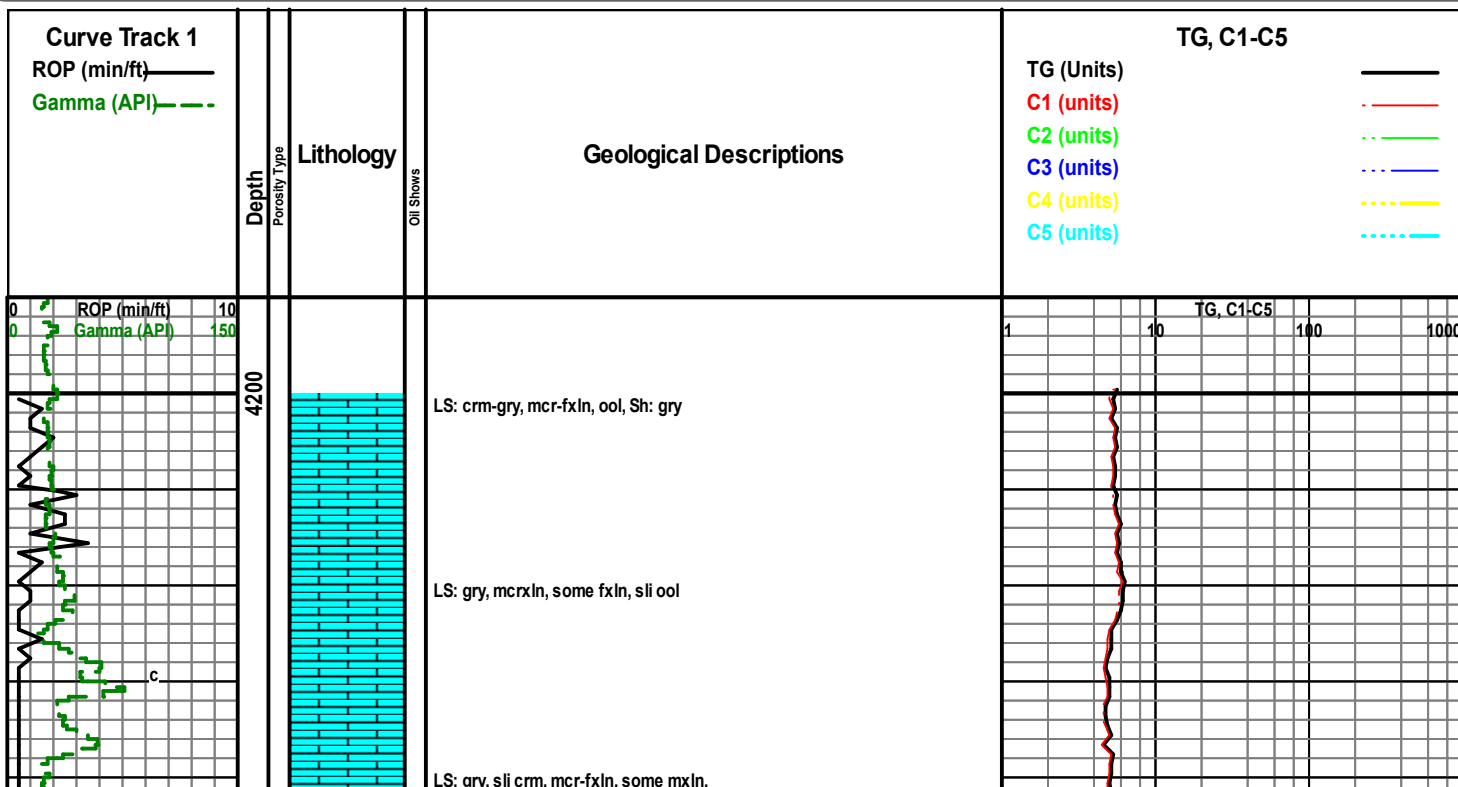
- STRINGER**
- Anhy

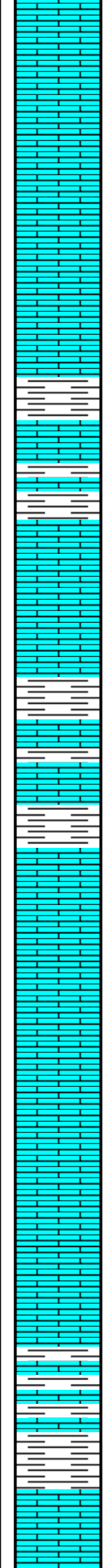
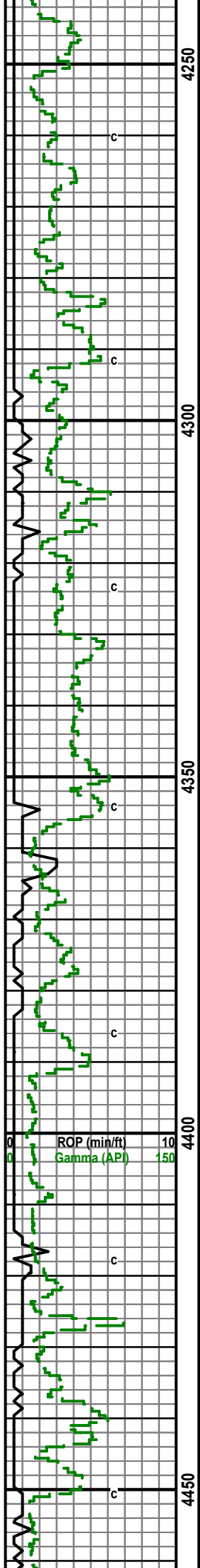
- Arg
- Bent
- Coal
- Dol
- Gyp
- Ls
- Mrst
- Slststrg

- Ssstrg

OIL SHOW

- Even
- Spotted
- Ques
- Dead





LS: A.A.

LS: gry-crm, mcrxln, sli fxln, some chalk

Sh: gry, sli lt-drk gry, LS: gry-crm, mcrxln

LS: gry-tan-crm, mcr-fxln, sli chalk

LS: gry-crm, mcrxln, sli chalk, Sh: lt gry

Sh: lt gry, sli silty, LS: tan-crm, mcrxln

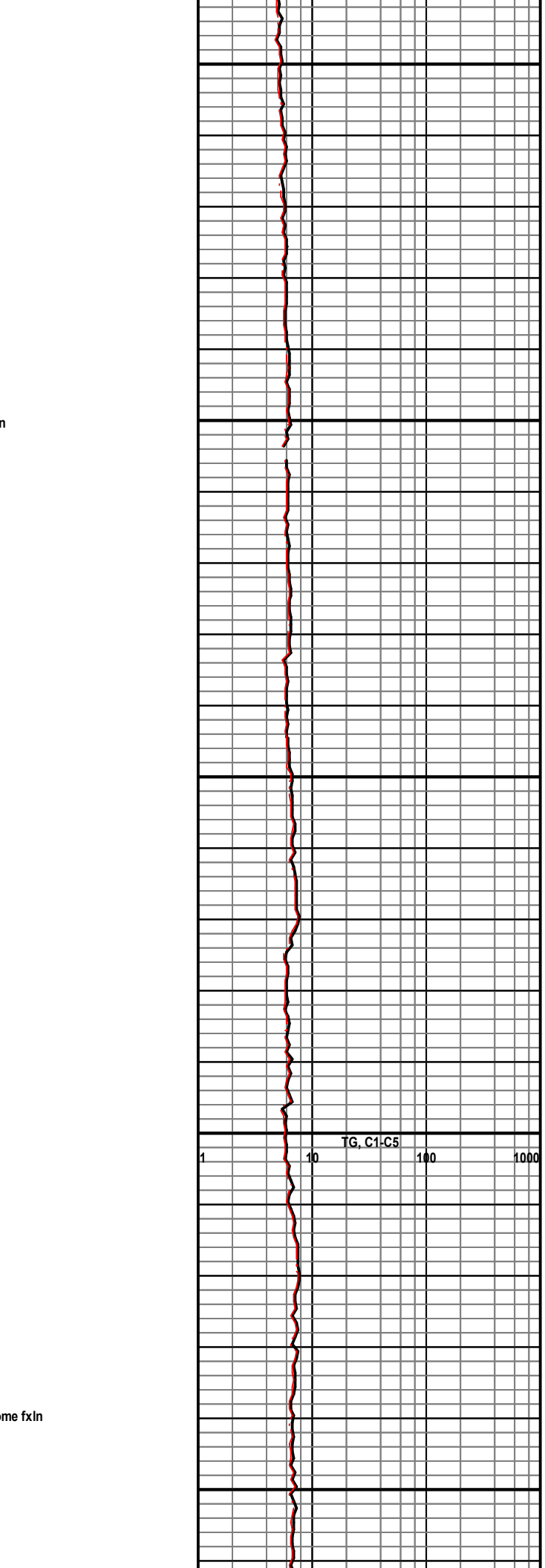
LS: crm, mcrxln, sli cherty

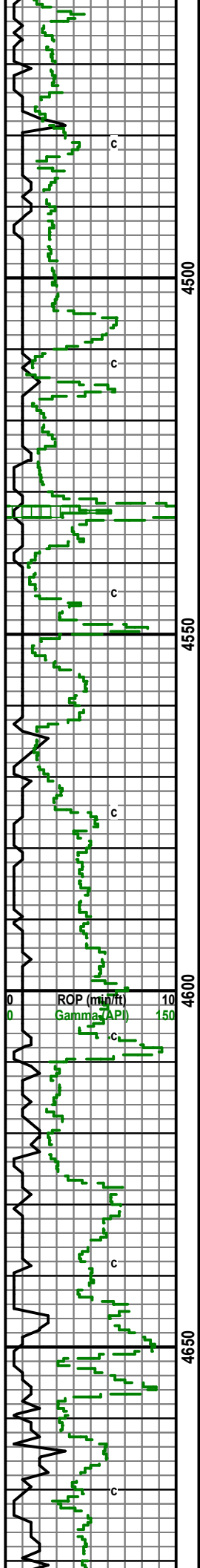
LS: crm, mcrxln, sli cherty, some chalk

LS: A.A. with some gry-tan, mcrxln

Sh: drk gry-blck, LS: gry-crm, mcrxln, some fxln

LS: A.A.



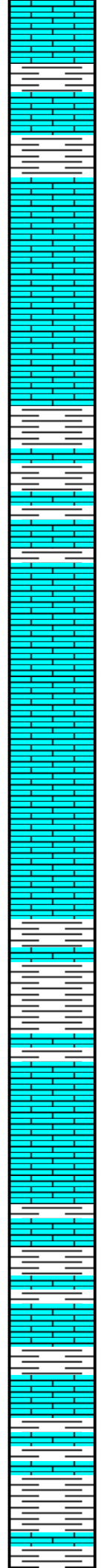


4500

4550

4600

4650



Sh: drk gry-blck, LS: crm, mcrxln, sli cherty

LS: gry, sli crm, mcrxln

LS: A.A. some sli fos, Sh: gry

LS: gry, sli crm, mcrxln, sli fos, Sh: drk gry-blck

LS: crm-tan, sli gry, f-mxln, sli fos

LS: crm, sli tan, mcr-fxln, sli fos

Sh: gry, some LS: A.A.

LS: crm, sli tan-gry, mcrxln, some fxln, sli fos

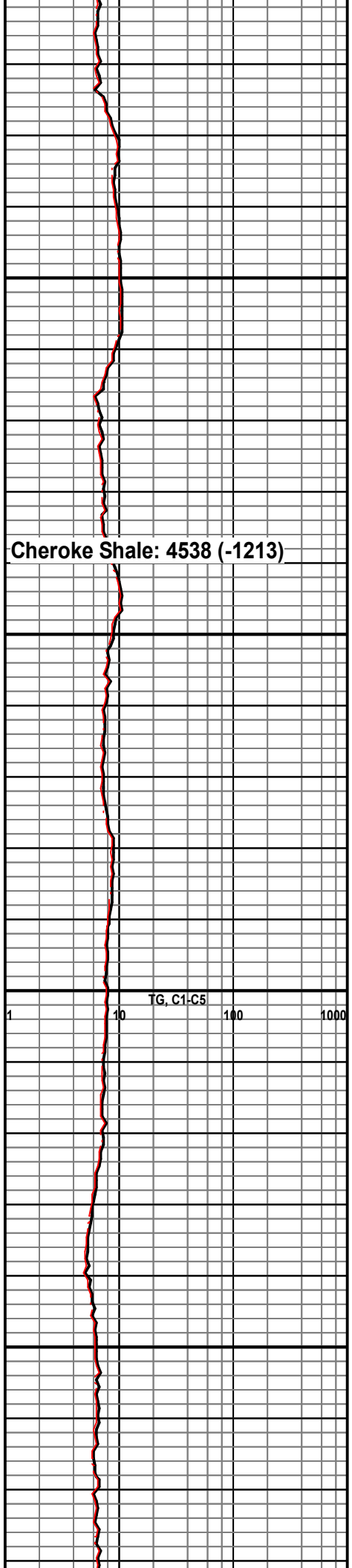
Sh: gry, some lt gry-drk gry, some LS: crm-tan, f-mxln

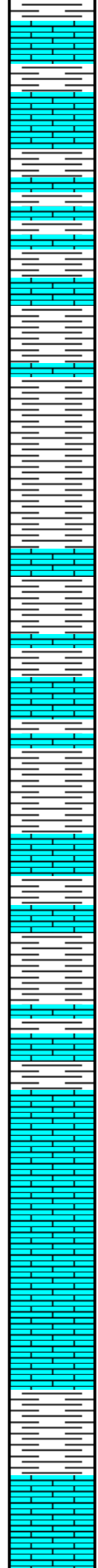
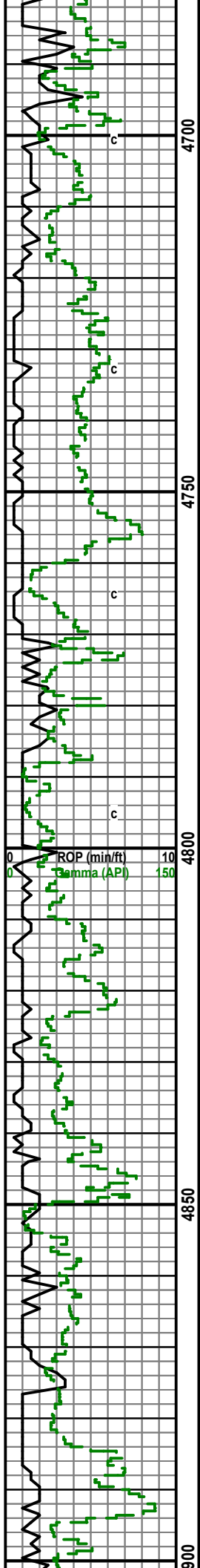
L:S: A.A. with some Sh: gry, sli lt gry-drk gry

Sh: gry-drk gry, some lt gry

Cherokee Shale: 4538 (-1213)

TG, C1-C5
1 10 100 1000





LS: crm-gry, mcrxln

LS: gry, sli crm, mcrxln, Sh: gry

Sh: gry, some lt gry-drk gry

Sh: A.A. with LS: gry, sli crm, mcrxln

LS: tan-gry, sli crm, mcrxln, some Sh: gry

LS: crm, sli gry, mcrxln, sli chalky

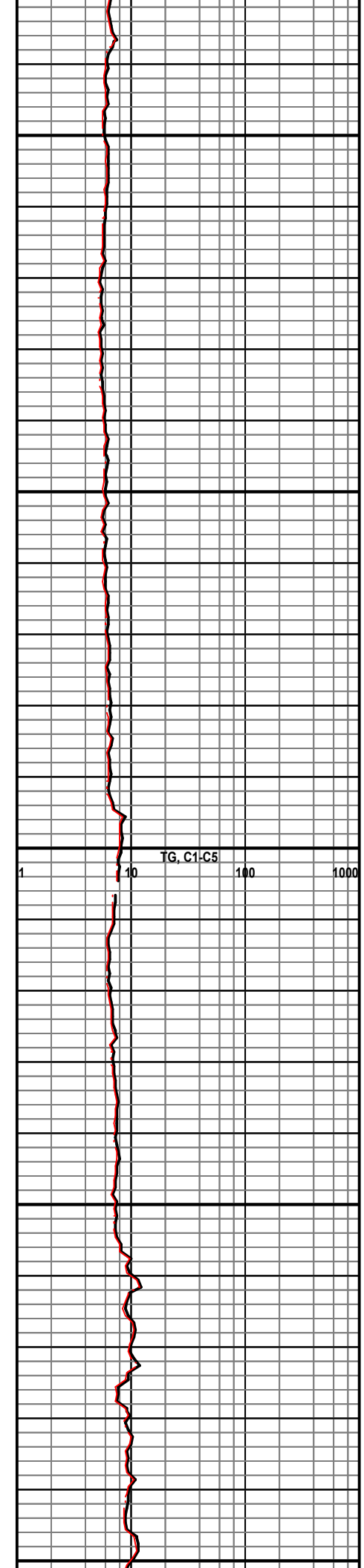
Sh: gry, with some LS: gry-crm, mcrxln

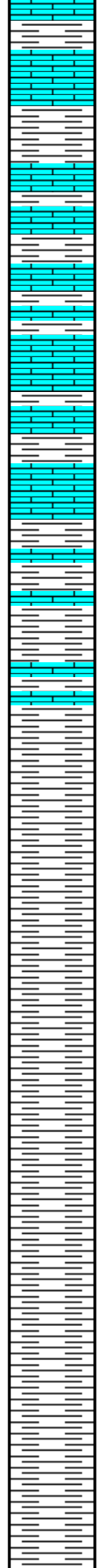
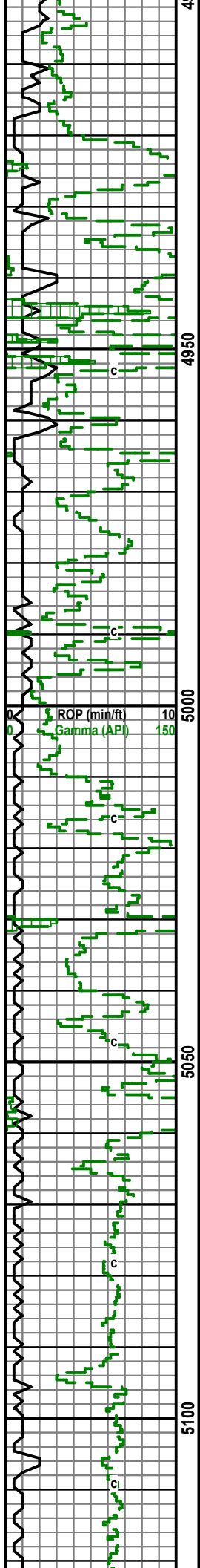
LS: gry-crm, mcrxln, sli chalk

LS: gry, sli crm, mcrxln

LS: A.A. with Sh: gry

LS: gry-crm, mcrxln





LS: A.A. with Sh: gry-drk gry

A.A.

A.A.

A.A.

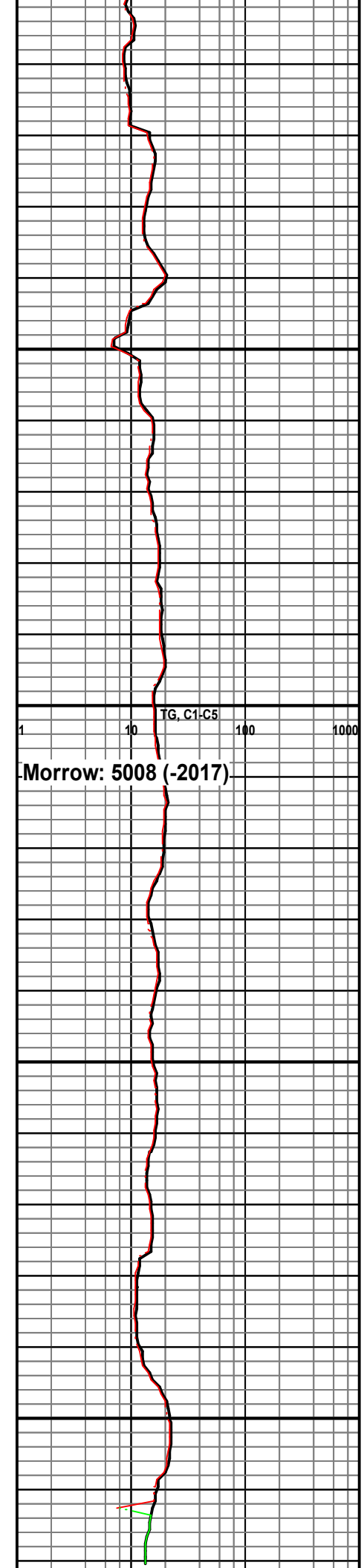
Sh: gry-drk gry, with some LS: gry, sli cm, mcrxln

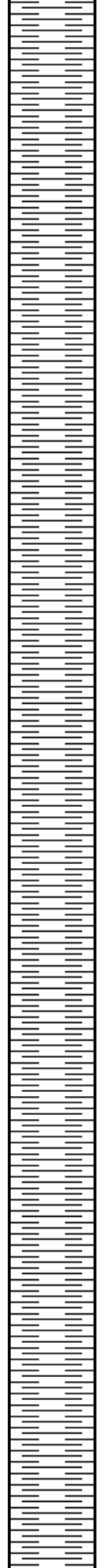
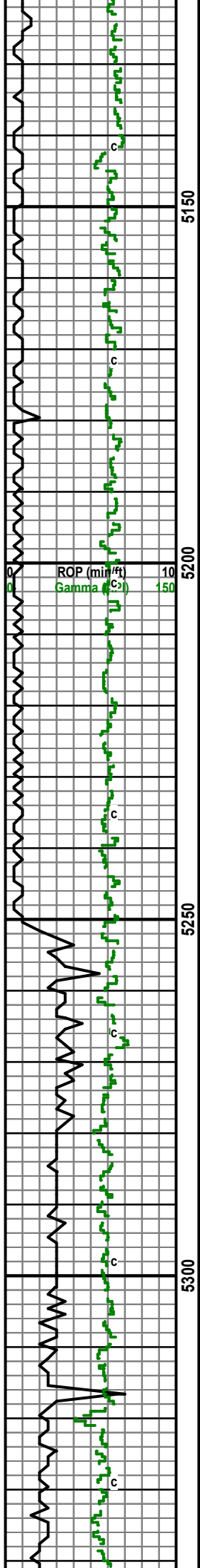
Sh: A.A., some LS: A.A.

Sh: A.A.

Sh: A.A.

Sh: gry-drk gry





Sh: gry-drk gry

Sh: gry-drk gry

Sh: gry-drk gry

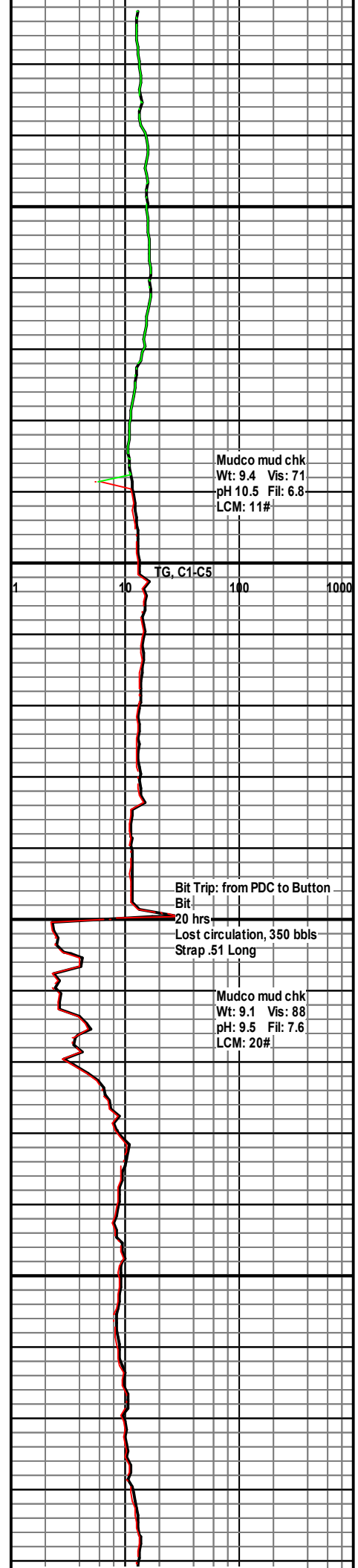
Sh: A.A.

Sh: gry-drk gry-lt gry

Sh: A.A. with some LS: crm-tan, sli gry, mcrxln, sli sndy

Sh: gry-drk gry, some lt gry, few pieces LS: A.A.

Sh: A.A.

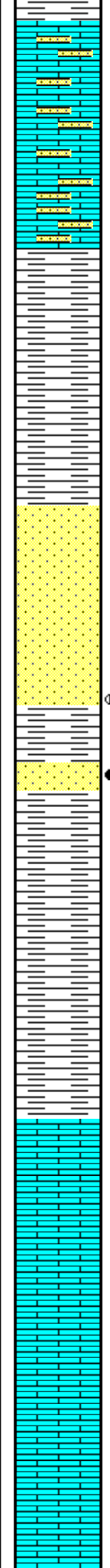
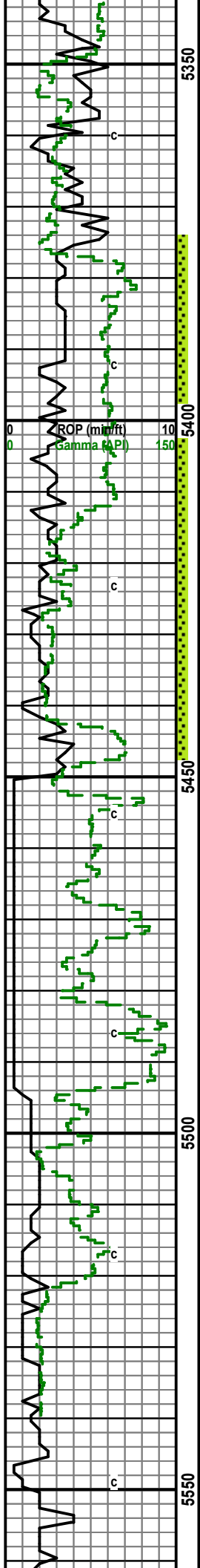


Mudco mud chk
Wt: 9.4 Vis: 71
pH 10.5 Fil: 6.8
LCM: 11#

Bit Trip: from PDC to Button
Bit
20 hrs
Lost circulation, 350 bbls
Strap .51 Long

Mudco mud chk
Wt: 9.1 Vis: 88
pH: 9.5 Fil: 7.6
LCM: 20#

Lower Morrow Marker: 5342 (-2017)



Sh: A.A. with LS crm-tan, mcr-fxln, sandy, some SS: opaque, sli glauc, calc

LS: crm-tan, mcr-fxln, sandy, some SS: opaque-clear, sli glauc, calc, some Sh: gry-lt gry-drk gry

SS: opaque-clear, fgrn, glauc, dense, sli calc, some LS: crm, sandy,

Sh: gry, drk gry-lt gry, some SS: A.A. and LS: A.A.

Sh: A.A. few pieces SS and LS

Sh: gry-drk gry

Mostly Sh: A.A. with some SS: opaque, f-mgrn, sub md, glauc, sli calc, NS, no fluor

Mostly Sh: some SS: A.A. mostly limey, few large quartz grns,

SS: opaque-clr, f-mgrn, pr sort, sub round-sub ang, sli glauc, fr-gd SFO, sli gas bubble, no odor, dull to fr yellow fluor, no odor

Sh: gry-drk gry

Sh: A.A.

mostly Sh: A.A. with some pieces of LS: red-crm, fxln, sandy

LS: crm, fxln, sli ool,

DST #1 5374-5450
30-60-45-90
IF: BOB 4"
FF: BOB instant, GTS 3"
Rec: 4526' GIP

241' wcmgo (15% g, 65% o, 5% w, 15% m)
62' wcomg (50% g, 10% o, 1% w, 39% m) 1000
124' ocgm (20% g, 5% o, 75% m)
50' ocgm (5% g, 2% o, 93% m)

IFP: 90-145 ISIP: 1102
FFP: 155-208 FSIP: 1100

CFS 60 min

CFS 60 min

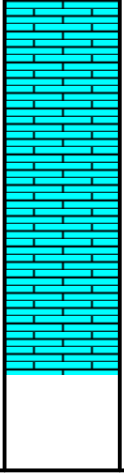
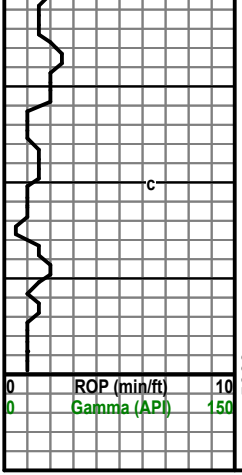
CFS 60 min

CFS 60 min

PDC back in hole after DST #1

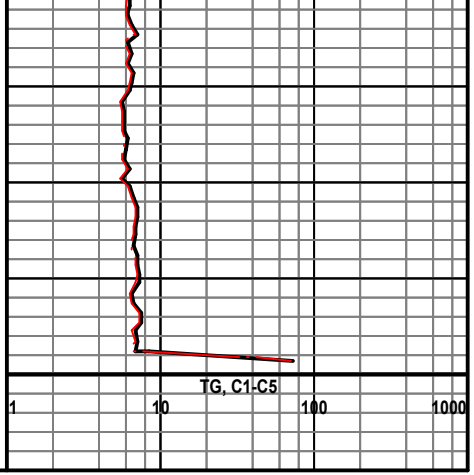
Mudco mdchk
Wt: 9.0 Vis: 67
pH: 9.5 Fil: 7.6
LCM: 17#

St. Gen: 5520 (-2195)



LTD 5574
 verified as RTD on logging, left out 1 joint of drill pipe after
 DST #1

RTD 5600 [Actual RTD 5574]



0 ROP (min/ft) 10
 0 Gamma (API) 150

5600

1 10 TG, C1-C5 100 1000