



**TEMPORARY ABANDONMENT WELL APPLICATION**

All blanks must be complete

OPERATOR: License# \_\_\_\_\_  
Name: \_\_\_\_\_  
Address 1: \_\_\_\_\_  
Address 2: \_\_\_\_\_  
City: \_\_\_\_\_ State: \_\_\_\_\_ Zip: \_\_\_\_\_ + \_\_\_\_\_  
Contact Person: \_\_\_\_\_  
Phone: ( \_\_\_\_\_ ) \_\_\_\_\_  
Contact Person Email: \_\_\_\_\_  
Field Contact Person: \_\_\_\_\_  
Field Contact Person Phone: ( \_\_\_\_\_ ) \_\_\_\_\_

API No. 15- \_\_\_\_\_  
Spot Description: \_\_\_\_\_  
\_\_\_\_ - \_\_\_\_ - \_\_\_\_ - \_\_\_\_ Sec. \_\_\_\_\_ Twp. \_\_\_\_\_ S. R. \_\_\_\_\_  E  W  
\_\_\_\_\_ feet from  N /  S Line of Section  
\_\_\_\_\_ feet from  E /  W Line of Section  
GPS Location: Lat: \_\_\_\_\_, Long: \_\_\_\_\_  
(e.g. xx.xxxxx) (e.g. -xxx.xxxxx)  
Datum:  NAD27  NAD83  WGS84  
County: \_\_\_\_\_ Elevation: \_\_\_\_\_  GL  KB  
Lease Name: \_\_\_\_\_ Well #: \_\_\_\_\_  
Well Type: (check one)  Oil  Gas  OG  WSW  Other: \_\_\_\_\_  
 SWD Permit #: \_\_\_\_\_  ENHR Permit #: \_\_\_\_\_  
 Gas Storage Permit #: \_\_\_\_\_  
Spud Date: \_\_\_\_\_ Date Shut-In: \_\_\_\_\_

	Conductor	Surface	Production	Intermediate	Liner	Tubing
Size						
Setting Depth						
Amount of Cement						
Top of Cement						
Bottom of Cement						

Casing Fluid Level from Surface: \_\_\_\_\_ How Determined? \_\_\_\_\_ Date: \_\_\_\_\_  
Casing Squeeze(s): \_\_\_\_\_ to \_\_\_\_\_ w / \_\_\_\_\_ sacks of cement, \_\_\_\_\_ to \_\_\_\_\_ w / \_\_\_\_\_ sacks of cement. Date: \_\_\_\_\_  
(top) (bottom) (top) (bottom)  
Do you have a valid Oil & Gas Lease?  Yes  No  
Depth and Type:  Junk in Hole at \_\_\_\_\_  Tools in Hole at \_\_\_\_\_ Casing Leaks:  Yes  No Depth of casing leak(s): \_\_\_\_\_  
(depth) (depth)  
Type Completion:  ALT. I  ALT. II Depth of:  DV Tool: \_\_\_\_\_ w / \_\_\_\_\_ sacks of cement  Port Collar: \_\_\_\_\_ w / \_\_\_\_\_ sack of cement  
(depth) (depth)  
Packer Type: \_\_\_\_\_ Size: \_\_\_\_\_ Inch Set at: \_\_\_\_\_ Feet  
Total Depth: \_\_\_\_\_ Plug Back Depth: \_\_\_\_\_ Plug Back Method: \_\_\_\_\_

**Geological Data:**

Formation Name	Formation Top	Formation Base	Completion Information
1. _____	At: _____	to _____ Feet	Perforation Interval _____ to _____ Feet or Open Hole Interval _____ to _____ Feet
2. _____	At: _____	to _____ Feet	Perforation Interval _____ to _____ Feet or Open Hole Interval _____ to _____ Feet

UNDER PENALTY OF PERJURY I HEREBY ATTEST THAT THE INFORMATION CONTAINED HEREIN IS TRUE AND CORRECT TO THE BEST OF MY KNOWLEDGE

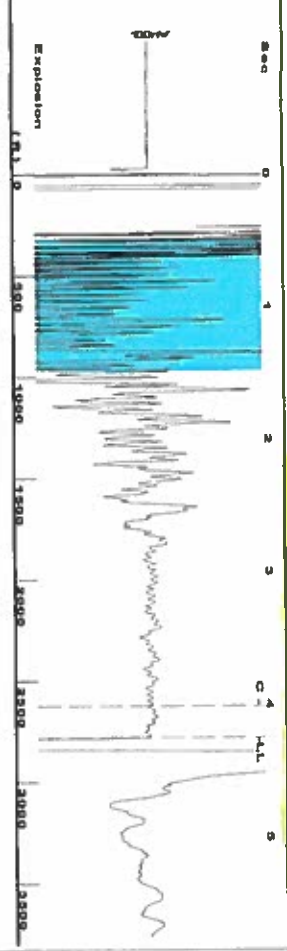
Submitted Electronically

<b>Do NOT Write in This Space - KCC USE ONLY</b>	Date Tested: _____	Results: _____	Date Plugged: _____	Date Repaired: _____	Date Put Back in Service: _____
	Review Completed by: _____ Comments: _____				
TA Approved: <input type="checkbox"/> Yes <input type="checkbox"/> Denied Date: _____					

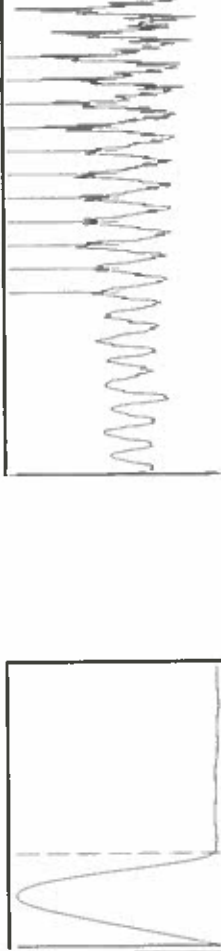
**Mail to the Appropriate KCC Conservation Office:**

	KCC District Office #1 - 210 E. Frontview, Suite A, Dodge City, KS 67801	Phone 620.225.8888
	KCC District Office #2 / UPGS - 3450 N. Rock Road, Building 600, Suite 601, Wichita, KS 67226	Phone 316.630.4000
	KCC District Office #3 - 1500 SW Seventh Steet, Chanute, KS 66720	Phone 620.432.2300
	KCC District Office #4 - 2301 E. 13th Street, Hays, KS 67601-2651	Phone 785.625.0550

Group: Merit Energy Company-Ulysses Well: Cooper D-2 (acquired on: 10/03/16 14:48:23)



Filter Type High Pass Automatic Collar Count Yes  
 Manual Acoustic Velo 1307.22 N/s Manual JTS/sec 20.6186  
 Time 4.251 sec  
 Joints 87.7082 Jis  
 Depth 2780.35 ft



Analysis Method: Automatic

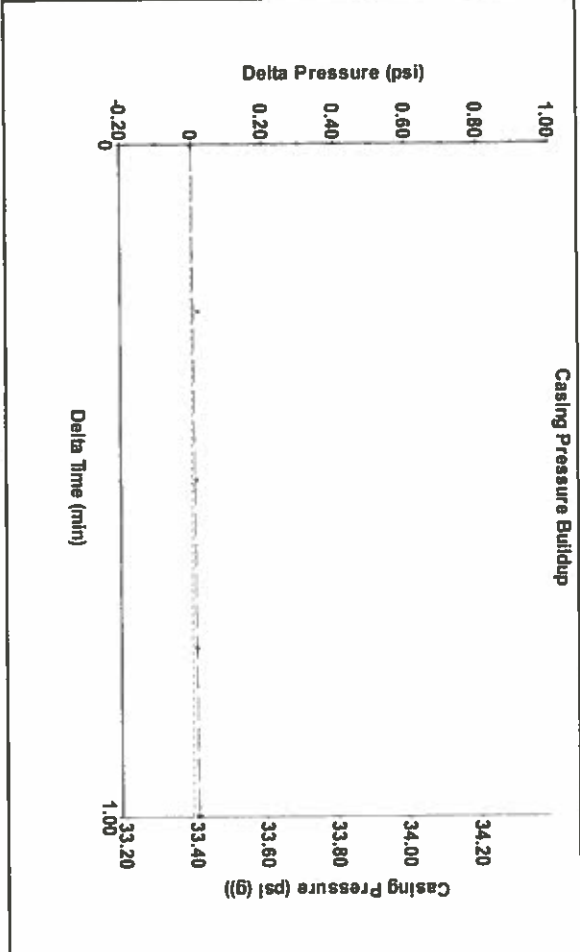
Group: Merit Energy Company-Ulysses Well: Cooper D-2 (acquired on: 10/03/16 14:48:23)

Production Current	Potential	Casing Pressure	Producing
Oil -*-	-*- BBL/D	33.4 psi (g)	Annular Gas Flow
Water -*-	-*- BBL/D	Casing Pressure Buildup	0 Mscf/D
Gas -*-	-*- Mscf/D	0.015 psi	% Liquid 100 %
IPR Method	Vogel	Gas/Liquid Interface Pressure	
PBHP/SBHP	-*-	36.6 psi (g)	
Production Efficiency	0.0		
		Liquid Level Depth	
		2780.35 ft	
Oil 40 deg API		Pump Intake Depth	
Water 1.05 Sp.Gr.H2O		2941.00 ft	
Gas 0.70 Sp.Gr.AIR		Formation Depth	
		2948.00 ft	
Acoustic Velocity	1308.09 N/s		

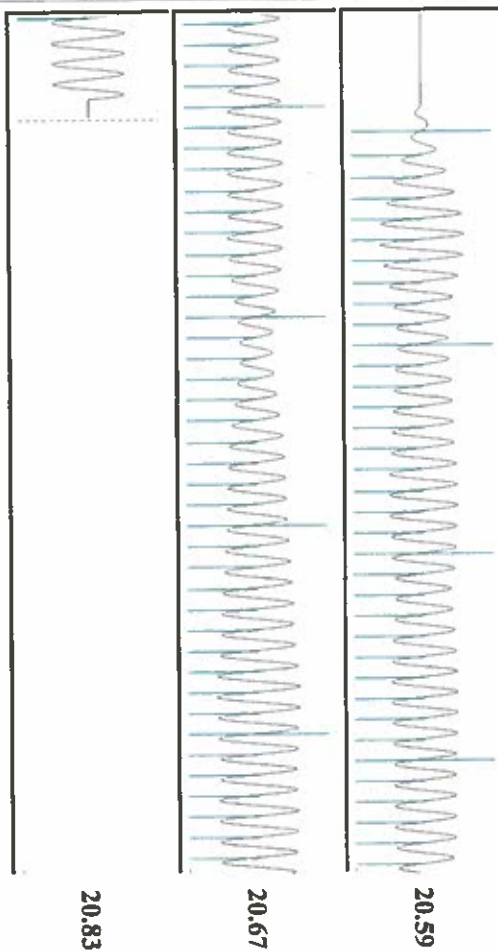


Formation Submergence  
 Total Gaseous Liquid Column HT (TVD) 161 ft  
 Equivalent Gas Free Liquid HT (TVF) 161 ft  
 Acoustic Test  
 Tim Frydenhall-Fluid Level Technician

Group: Merit Energy Company-Ulysses Well: Cooper D-2 (acquired on: 10/03/16 14:48:23)



Group: Merit Energy Company-Ulysses Well: Cooper D-2 (acquired on: 10/03/16 14:48:23)



Change in Pressure 0.02 psi PT14654 Range  
 Change in Time 1.00 min 0 - ? psi

Acoustic Velocity 1308.09 N/s Joints counted 77  
 Joints Per Second 20.6324 Jis/sec Joints to liquid level 87.7082  
 Depth to liquid level 2780.35 ft Filter Width 18.6186  
 Automatic Collar Count Yes Time to 1st Collar 4.012

Conservation Division  
District Office No. 1  
210 E. Frontview, Suite A  
Dodge City, KS 67801



Phone: 620-225-8888  
Fax: 620-225-8885  
<http://kcc.ks.gov/>

Jay Scott Emler, Chairman  
Shari Feist Albrecht, Commissioner  
Pat Apple, Commissioner

Sam Brownback, Governor

October 04, 2016

Katherine McClurkan  
Merit Energy Company, LLC  
13727 Noel Road, Suite 1200  
Dallas, TX 75240

Re: Temporary Abandonment  
API 15-067-20363-00-00  
Cooper D 2  
NE/4 Sec.06-28S-35W  
Grant County, Kansas

Dear Katherine McClurkan:

"Your temporary abandonment (TA) application for the well listed above has been approved. In accordance with K.A.R. 82-3-111 the TA status of this well will expire 10/04/2017.

- \* If you return this well to service or plug it, please notify the District Office.
- \* If you sell this well you are required to file a Transfer of Operator form, T-1.
- \* If the well will remain temporarily abandoned, you must submit a new TA application, CP-111, before 10/04/2017.

You may contact me at the number above if you have questions.

Very truly yours,

Michael Maier"