



TEMPORARY ABANDONMENT WELL APPLICATION

All blanks must be complete

OPERATOR: License# _____
Name: _____
Address 1: _____
Address 2: _____
City: _____ State: _____ Zip: _____ + _____
Contact Person: _____
Phone: (_____) _____
Contact Person Email: _____
Field Contact Person: _____
Field Contact Person Phone: (_____) _____

API No. 15- _____
Spot Description: _____
____ - ____ - ____ - ____ Sec. _____ Twp. _____ S. R. _____ E W
_____ feet from N / S Line of Section
_____ feet from E / W Line of Section
GPS Location: Lat: _____, Long: _____
(e.g. xx.xxxxx) (e.g. -xxx.xxxxx)
Datum: NAD27 NAD83 WGS84
County: _____ Elevation: _____ GL KB
Lease Name: _____ Well #: _____
Well Type: (check one) Oil Gas OG WSW Other: _____
 SWD Permit #: _____ ENHR Permit #: _____
 Gas Storage Permit #: _____
Spud Date: _____ Date Shut-In: _____

	Conductor	Surface	Production	Intermediate	Liner	Tubing
Size						
Setting Depth						
Amount of Cement						
Top of Cement						
Bottom of Cement						

Casing Fluid Level from Surface: _____ How Determined? _____ Date: _____
Casing Squeeze(s): _____ to _____ w / _____ sacks of cement, _____ to _____ w / _____ sacks of cement. Date: _____
(top) (bottom) (top) (bottom)
Do you have a valid Oil & Gas Lease? Yes No
Depth and Type: Junk in Hole at _____ Tools in Hole at _____ Casing Leaks: Yes No Depth of casing leak(s): _____
(depth) (depth)
Type Completion: ALT. I ALT. II Depth of: DV Tool: _____ w / _____ sacks of cement Port Collar: _____ w / _____ sack of cement
(depth) (depth)
Packer Type: _____ Size: _____ Inch Set at: _____ Feet
Total Depth: _____ Plug Back Depth: _____ Plug Back Method: _____

Geological Data:

Formation Name	Formation Top	Formation Base	Completion Information
1. _____	At: _____	to _____ Feet	Perforation Interval _____ to _____ Feet or Open Hole Interval _____ to _____ Feet
2. _____	At: _____	to _____ Feet	Perforation Interval _____ to _____ Feet or Open Hole Interval _____ to _____ Feet

UNDER PENALTY OF PERJURY I HEREBY ATTEST THAT THE INFORMATION CONTAINED HEREIN IS TRUE AND CORRECT TO THE BEST OF MY KNOWLEDGE

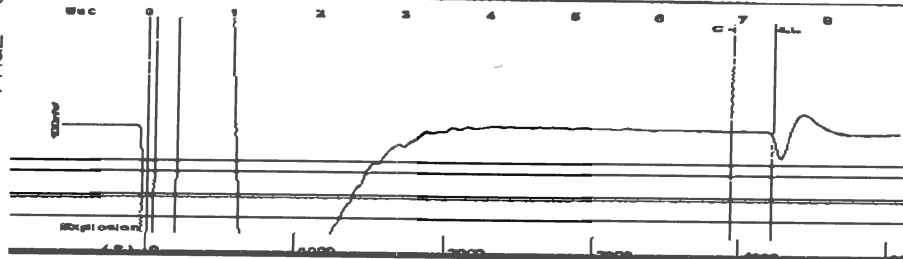
Submitted Electronically

Do NOT Write in This Space - KCC USE ONLY	Date Tested: _____	Results: _____	Date Plugged: _____	Date Repaired: _____	Date Put Back in Service: _____
	Review Completed by: _____ Comments: _____				
TA Approved: <input type="checkbox"/> Yes <input type="checkbox"/> Denied Date: _____					

Mail to the Appropriate KCC Conservation Office:

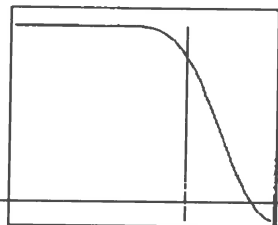
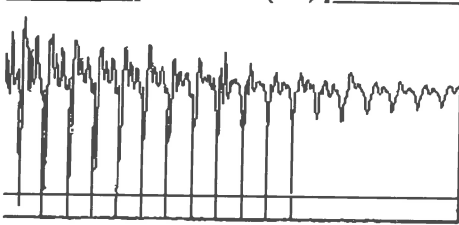
	KCC District Office #1 - 210 E. Frontview, Suite A, Dodge City, KS 67801	Phone 620.225.8888
	KCC District Office #2 / UPGS - 3450 N. Rock Road, Building 600, Suite 601, Wichita, KS 67226	Phone 316.630.4000
	KCC District Office #3 - 1500 SW Seventh Steet, Chanute, KS 66720	Phone 620.432.2300
	KCC District Office #4 - 2301 E. 13th Street, Hays, KS 67601-2651	Phone 785.625.0550

Group: Belpre Well: Chalk 1-13 (acquired on: 09/29/16 08:52:44)



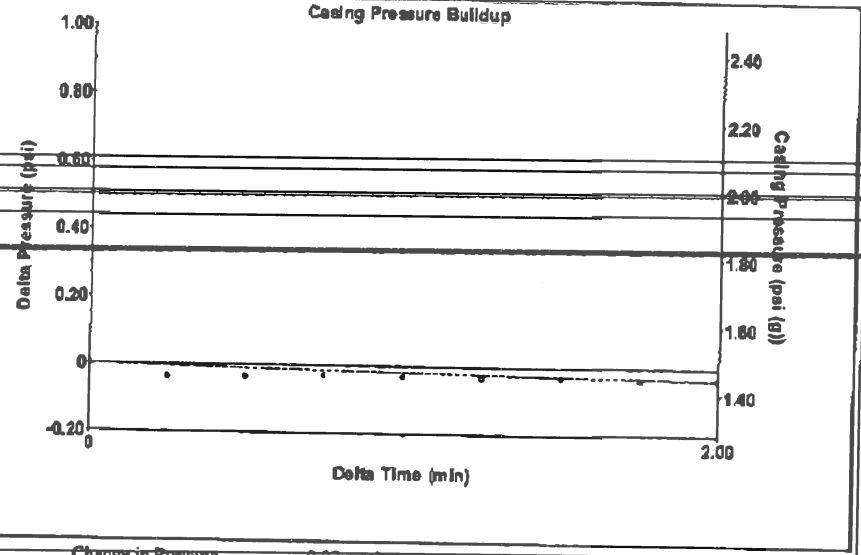
Filter Type High Pass Automatic Collar Count Yes Time 7.389 sec
 Manual Acoustic Velocity 1145.59 ft/s Manual JTS/sec 18.3824 Joints 135.598 Jts
 Depth 4225.25 ft

[0.5 to 1.5 (Sec)]



Analysis Method: Automatic

Group: Belpre Well: Chalk 1-13 (acquired on: 09/29/16 08:52:44)



Change in Pressure -0.03 psi PI13440
 Change in Time 2.00 min Range 0 - ? psi

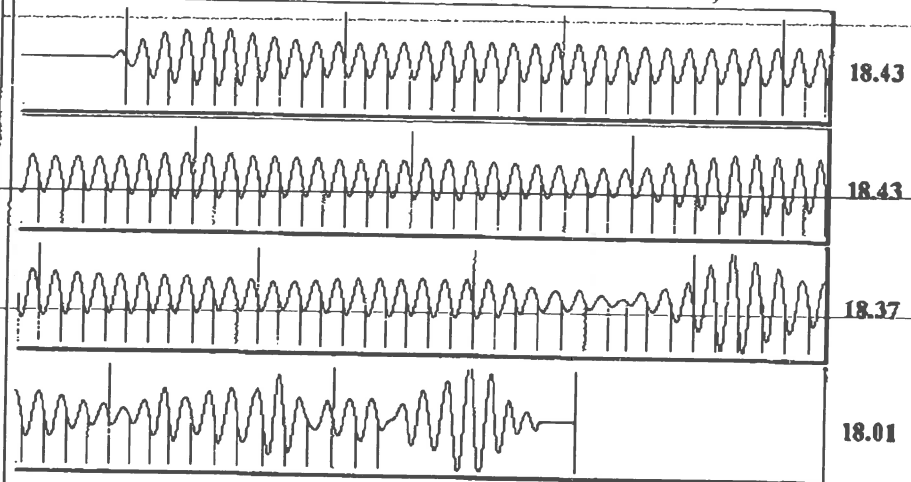
Group: Belpre Well: Chalk 1-13 (acquired on: 09/29/16 08:52:44)

Production		Potential	Casing Pressure	Producing	
Oil	-	-	1.5 psi (g)	Annular Gas Flow	0 Mscf/D
Water	-	-	Casing Pressure Buildup	% Liquid	100 %
Gas	-	-	-0.035 psi		
			2.00 min		
IPR Method	Vogel		Gas/Liquid Interface Pressure		
PBHP/SBHP	-		3.5 psi (g)		
Production Efficiency	0.0				
Oil	40 deg API		Liquid Level Depth		
Water	1.05 Sp.Gr.H2O		4225.25 ft		
Gas	0.85 Sp.Gr.AIR		Pump Intake Depth		
			4425.00 ft		
Acoustic Velocity	1143.66 ft/s		Formation Depth		
			4420.00 ft		



Pump Intake 71.6 psi (g)
 Producing BHP 69.9 psi (g)
 Static BHP - psi (g)

Group: Belpre Well: Chalk 1-13 (acquired on: 09/29/16 08:52:44)



Acoustic Velocity 1143.66 ft/s Joints counted 122
 Joints Per Second 18.3514 jts/sec Joints to liquid level 135.598
 Depth to liquid level 4225.25 ft Filter Width 16.3824 20.3824
 Automatic Collar Count Yes Time to 1st Collar 0.256 6.904

Conservation Division
District Office No. 1
210 E. Frontview, Suite A
Dodge City, KS 67801



Phone: 620-225-8888
Fax: 620-225-8885
<http://kcc.ks.gov/>

Jay Scott Emler, Chairman
Shari Feist Albrecht, Commissioner
Pat Apple, Commissioner

Sam Brownback, Governor

October 11, 2016

Loveness Mpanje
F. G. Holl Company L.L.C.
9431 E CENTRAL STE 100
WICHITA, KS 67206-2563

Re: Temporary Abandonment
API 15-047-20378-00-00
CHALK 1-13
SE/4 Sec.13-24S-18W
Edwards County, Kansas

Dear Loveness Mpanje:

"Your temporary abandonment (TA) application for the well listed above has been approved. In accordance with K.A.R. 82-3-111 the TA status of this well will expire 10/11/2017.

- * If you return this well to service or plug it, please notify the District Office.
- * If you sell this well you are required to file a Transfer of Operator form, T-1.
- * If the well will remain temporarily abandoned, you must submit a new TA application, CP-111, before 10/11/2017.

You may contact me at the number above if you have questions.

Very truly yours,

Michael Maier"