



TEMPORARY ABANDONMENT WELL APPLICATION

OPERATOR: License# _____
 Name: _____
 Address 1: _____
 Address 2: _____
 City: _____ State: _____ Zip: _____ + _____
 Contact Person: _____
 Phone: (_____) _____
 Contact Person Email: _____
 Field Contact Person: _____
 Field Contact Person Phone: (_____) _____

API No. 15- _____
 Spot Description: _____
 _____ - _____ - _____ - _____ Sec. _____ Twp. _____ S. R. _____ E W
 _____ feet from N / S Line of Section
 _____ feet from E / W Line of Section
 GPS Location: Lat: _____, Long: _____
(e.g. xx.xxxxx) (e.g. -xxx.xxxxx)
 Datum: NAD27 NAD83 WGS84
 County: _____ Elevation: _____ GL KB
 Lease Name: _____ Well #: _____
 Well Type: (check one) Oil Gas OG WSW Other: _____
 SWD Permit #: _____ ENHR Permit #: _____
 Gas Storage Permit #: _____
 Spud Date: _____ Date Shut-In: _____

	Conductor	Surface	Production	Intermediate	Liner	Tubing
Size						
Setting Depth						
Amount of Cement						
Top of Cement						
Bottom of Cement						

Casing Fluid Level from Surface: _____ How Determined? _____ Date: _____
 Casing Squeeze(s): _____ to _____ w / _____ sacks of cement, _____ to _____ w / _____ sacks of cement. Date: _____
(top) (bottom) (top) (bottom)
 Do you have a valid Oil & Gas Lease? Yes No
 Depth and Type: Junk in Hole at _____ Tools in Hole at _____ Casing Leaks: Yes No Depth of casing leak(s): _____
(depth) (depth)
 Type Completion: ALT. I ALT. II Depth of: DV Tool: _____ w / _____ sacks of cement Port Collar: _____ w / _____ sack of cement
(depth) (depth)
 Packer Type: _____ Size: _____ Inch Set at: _____ Feet
 Total Depth: _____ Plug Back Depth: _____ Plug Back Method: _____

Geological Data:

Formation Name	Formation Top	Formation Base	Completion Information
1. _____	At: _____	to _____ Feet	Perforation Interval _____ to _____ Feet or Open Hole Interval _____ to _____ Feet
2. _____	At: _____	to _____ Feet	Perforation Interval _____ to _____ Feet or Open Hole Interval _____ to _____ Feet

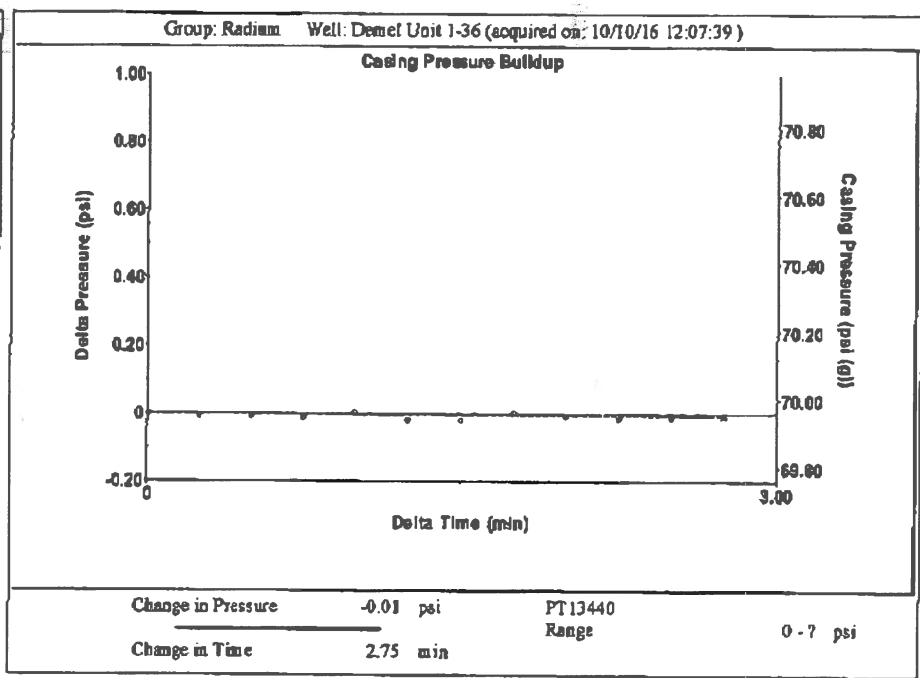
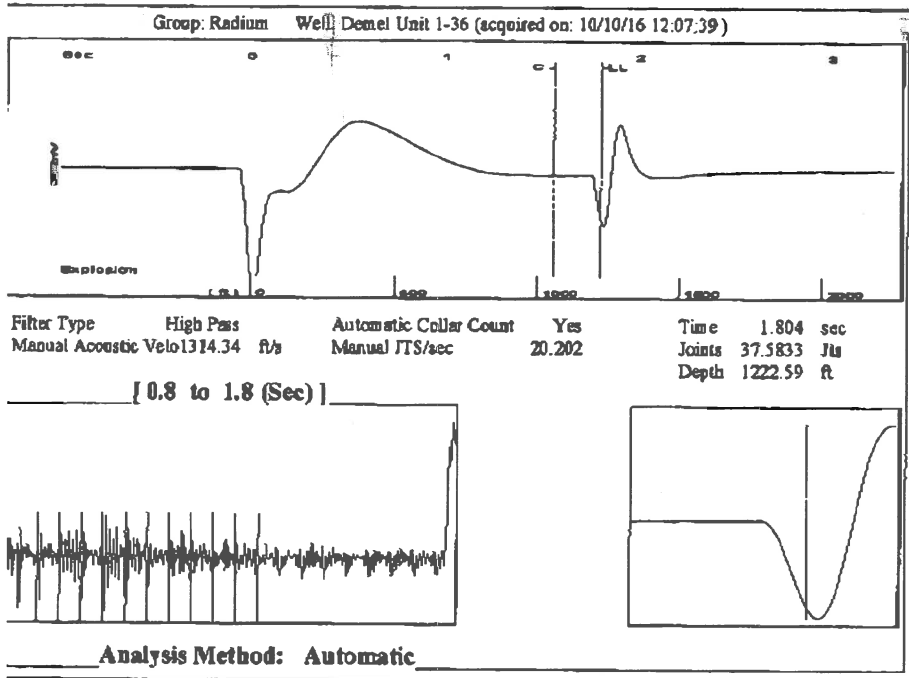
UNDER PENALTY OF PERJURY I HEREBY ATTEST THAT THE INFORMATION CONTAINED HEREIN IS TRUE AND CORRECT TO THE BEST OF MY KNOWLEDGE

Submitted Electronically

Do NOT Write in This Space - KCC USE ONLY	Date Tested: _____	Results: _____	Date Plugged: _____	Date Repaired: _____	Date Put Back in Service: _____
	Review Completed by: _____ Comments: _____				
TA Approved: <input type="checkbox"/> Yes <input type="checkbox"/> Denied Date: _____					

Mail to the Appropriate KCC Conservation Office:

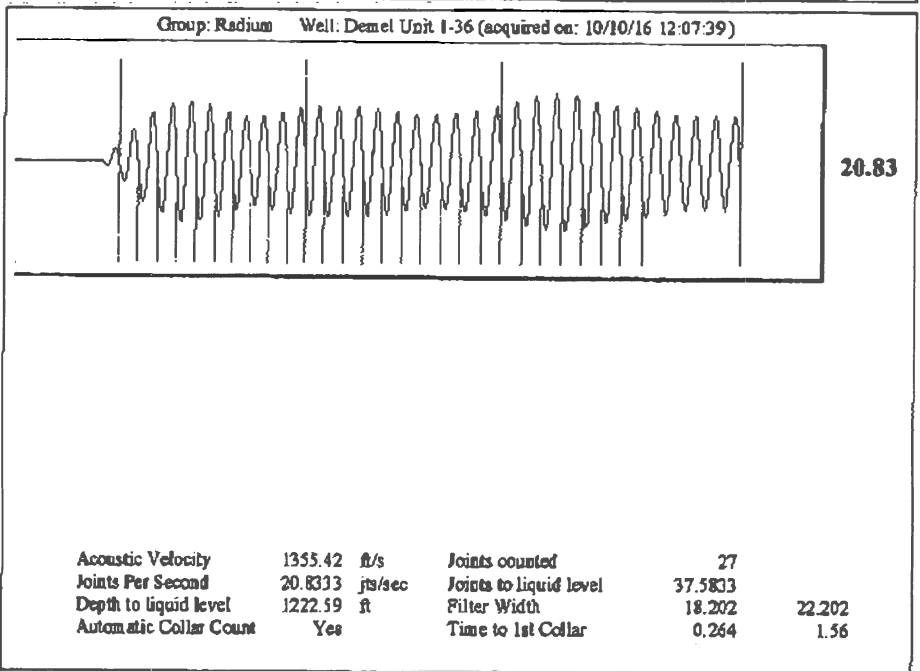
	KCC District Office #1 - 210 E. Frontview, Suite A, Dodge City, KS 67801	Phone 620.225.8888
	KCC District Office #2 - 3450 N. Rock Road, Building 600, Suite 601, Wichita, KS 67226	Phone 316.337.7400
	KCC District Office #3 - 1500 SW Seventh Steet, Chanute, KS 66720	Phone 620.432.2300
	KCC District Office #4 - 2301 E. 13th Street, Hays, KS 67601-2651	Phone 785.625.0550

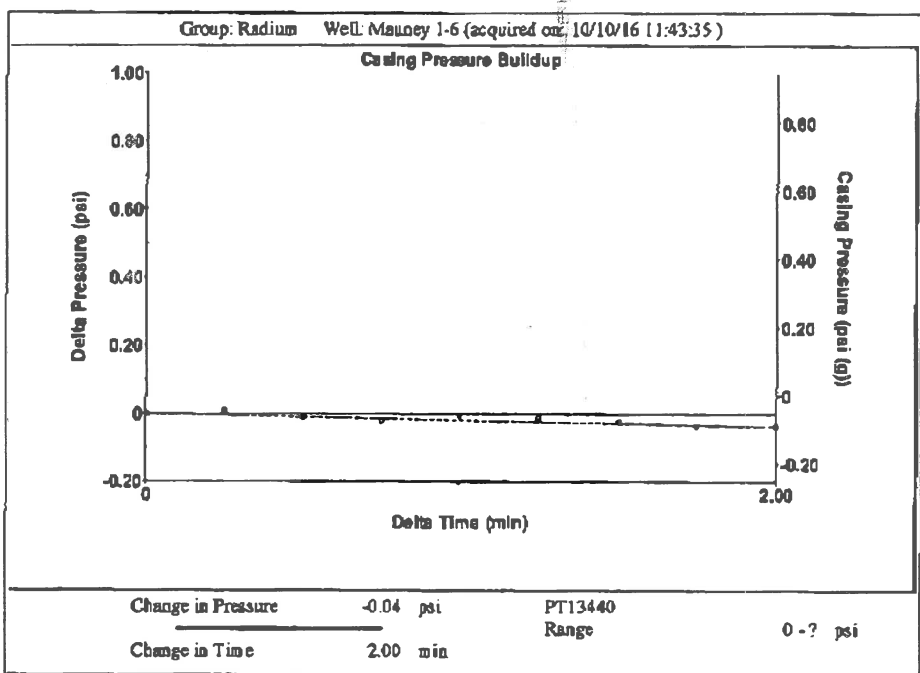
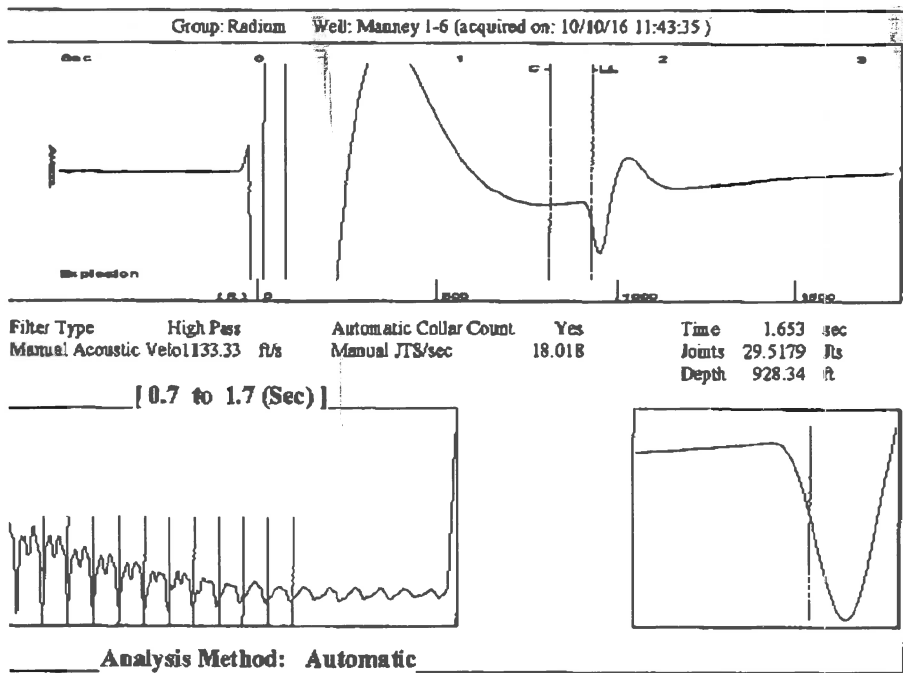


Group: Radium Well: Demet Unit 1-36 (acquired on: 10/10/16 12:07:39)

Production	Potential	Casing Pressure	Producing
Current	- * - BBL/D	70.0 psi (g)	
Oil - * -	- * - BBL/D	Casing Pressure Buildup	Annular Gas Flow
Water - * -	- * - Mscf/D	-0.007 psi	0 Mscf/D
Gas - * -		2.75 min	% Liquid
		Gas/Liquid Interface Pressure	100 %
		72.3 psi (g)	
IPR Method Vogel		Liquid Level Depth	
PBHP/SBHP - * -		1222.59 ft	
Production Efficiency 0.0		Pump Intake Depth	
		3807.00 ft	
Oil 40 deg API		Formation Depth	
Water 1.05 Sp.Gr.H2O		3770.00 ft	
Gas 0.63 Sp.Gr.AIR			
Acoustic Velocity 1355.42 ft/s			
Formation Submergence			
Total Gaseous Liquid Column HT (TVD)	2584 ft		
Equivalent Gas Free Liquid HT (TVD)	2584 ft		
Acoustic Test			

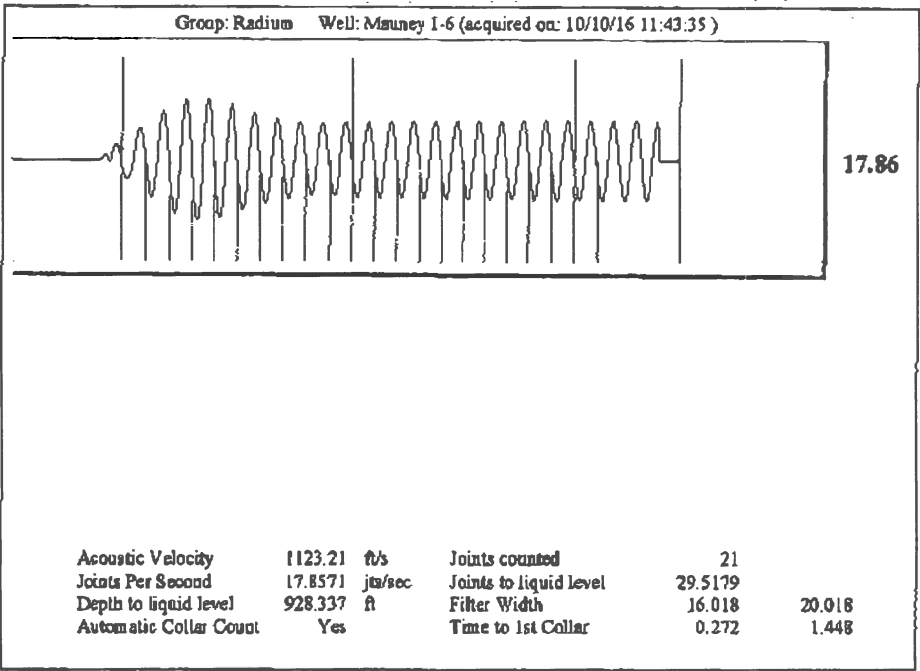
Pump Intake 924.6 psi (g)
 Producing BHP 913.0 psi (g)
 Static BHP - * - psi (g)

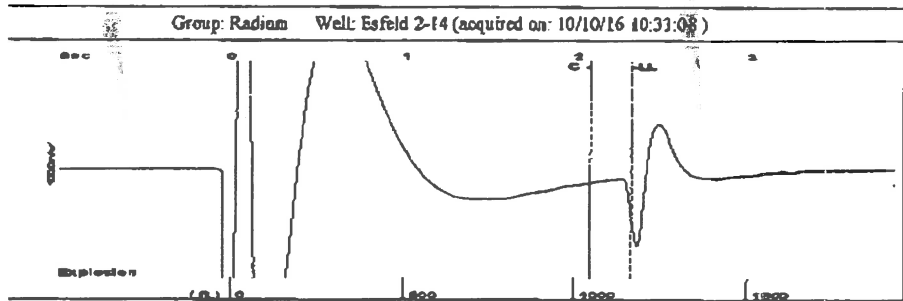




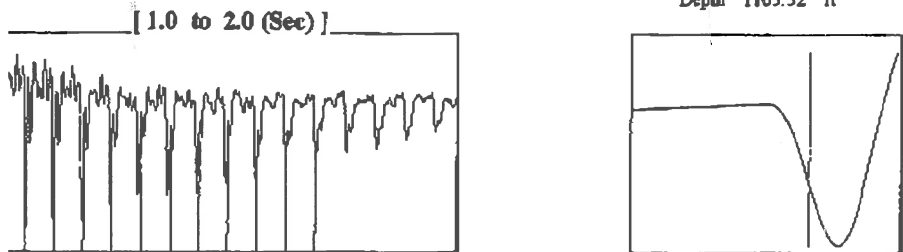
Group: Radium Well: Manney I-6 (acquired on: 10/10/16 11:43:35)

Production Current	Potential	Casing Pressure	Producing
Oil -*-	-*- BBL/D	-0.1 psi (g)	Annular Gas Flow
Water -*-	-*- BBL/D	Casing Pressure Buildup	5 Msc/D
Gas -*-	-*- Msc/D	-0.0 psi	% Liquid
		2.00 min	81 %
IPR Method	Vogel	Gas/Liquid Interface Pressure	
PBHP/SBHP	-*-	0.4 psi (g)	
Production Efficiency	0.0		
Oil 40 deg API		Liquid Level Depth	
Water 1.05 Sp.Gr.H2O		928.34 ft	
Gas 0.85 Sp.Gr.AIR		Pump Intake Depth	
		3668.00 ft	
Acoustic Velocity 1123.21 ft/s		Formation Depth	
		3808.00 ft	
Formation Submergence			Pump Intake
Total Gaseous Liquid Column HT (TVD) 2740 ft			741.6 psi (g)
Equivalent Gas Free Liquid HT (TVD) 2218 ft			Producing BHP
			797.2 psi (g)
			Static BHP
			-*- psi (g)

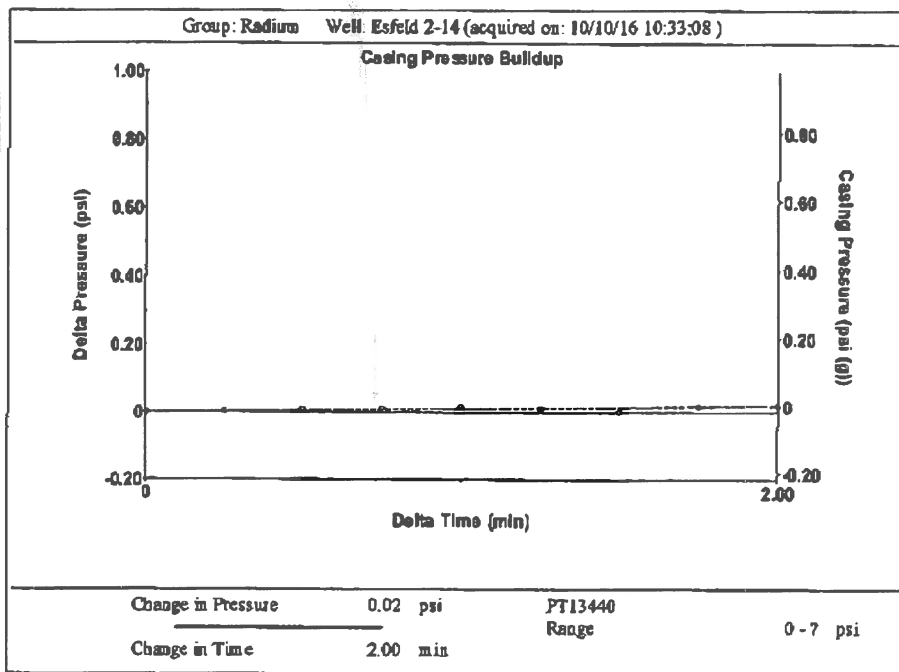




Filter Type High Pass Automatic Collar Count Yes Time 2.312 sec
 Manual Acoustic Velo 982.418 ft/s Manual JTS/sec 15.6986 Joints 37.2489 Jts
 Depth 1165.52 ft

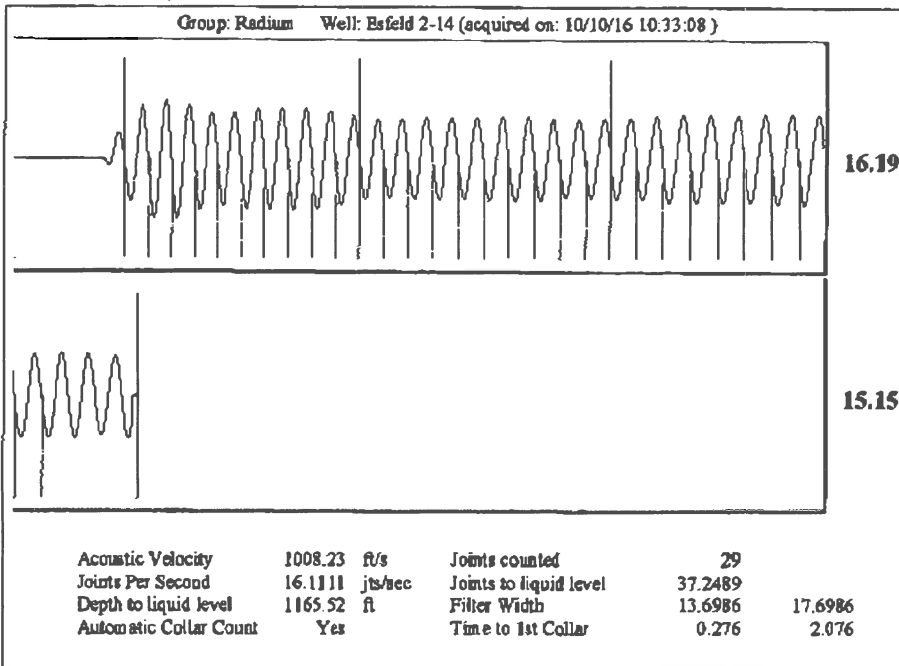


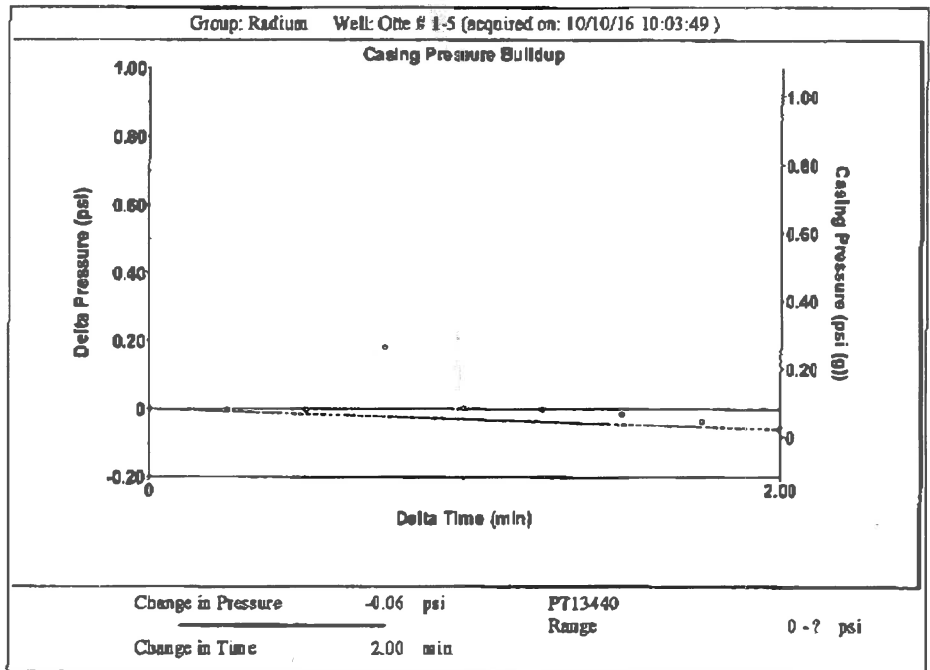
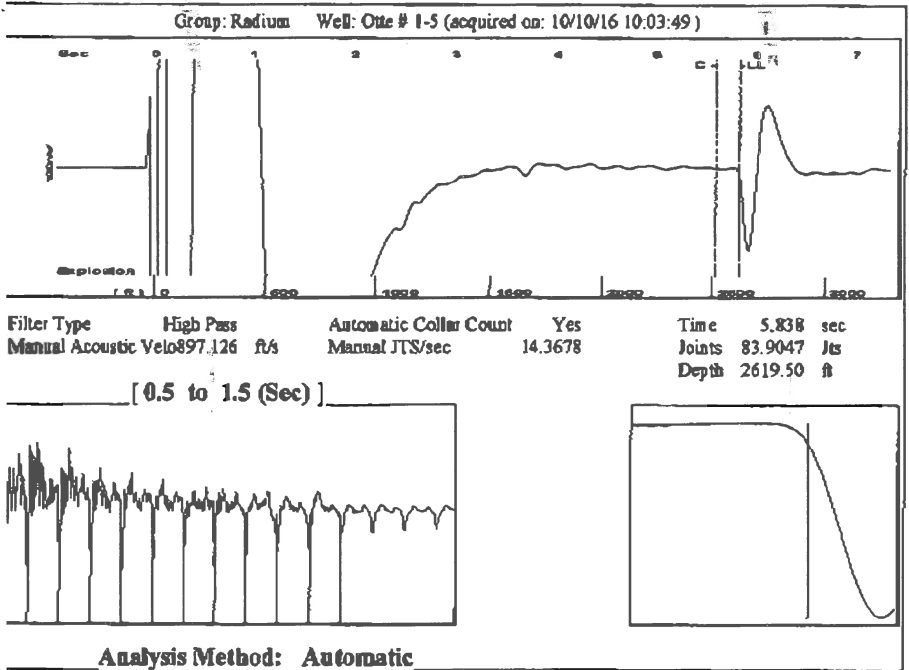
Analysis Method: Automatic



Group: Radium Well: Esfeld 2-14 (acquired on: 10/10/16 10:33:08)

Production Current	Potential	Casing Pressure	Producing
Oil -°-	-°- BBL/D	-0.0 psi (g)	
Water -°-	-°- BBL/D	Casing Pressure Buildup	
Gas -°-	-°- Macf/D	0.019 psi	
		2.00 min	Annular Gas Flow 0 Mscf/D
IPR Method Vogel		Gas/Liquid Interface Pressure	% Liquid 100 %
PBHP/SBHP -°-		0.6 psi (g)	
Production Efficiency 0.0			
Oil 40 deg.API		Liquid Level Depth	
Water 1.05 Sp.Gr.H2O		1165.52 ft	
Gas 0.96 Sp.Gr.AIR		Pump Intake Depth	
		3792.00 ft	
Acoustic Velocity 1008.23 ft/s		Formation Depth	
		3750.00 ft	
Formation Submergence		Pump Intake	
Total Gaseous Liquid Column HT (TVD) 2626 ft		868.4 psi (g)	
Equivalent Gas Free Liquid HT (TVD) 2626 ft		Producing BHP	
		855.4 psi (g)	
Acoustic Test		Static BHP	
		-°- psi (g)	

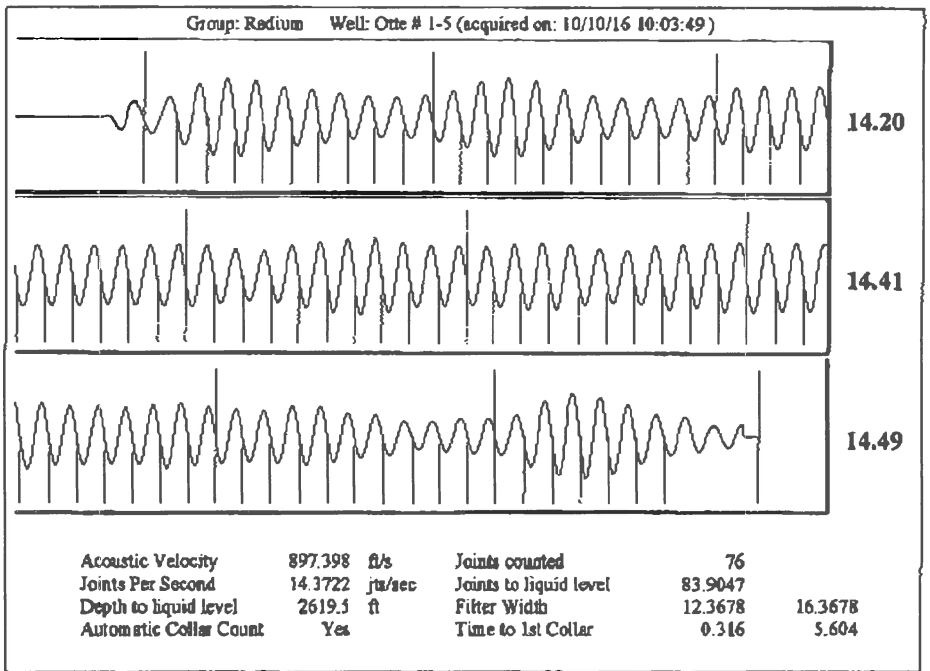




Group: Radium Well: Ote # 1-5 (acquired on: 10/10/16 10:03:49)

Production Current	Potential	Casing Pressure	Producing
Oil -.- BBL/D	-.- BBL/D	0.1 psi (g)	
Water -.- BBL/D	-.- BBL/D	Casing Pressure Buildup	Annular Gas Flow
Gas -.- Mscf/D	-.- Mscf/D	-0.1 psi	0 Mscf/D
		2.00 min	% Liquid
		Gas/Liquid Interface Pressure	100 %
		1.6 psi (g)	
IPR Method Vogel		Liquid Level Depth	
PBHP/SBHP -.-		2619.50 ft	
Production Efficiency 0.0		Pump Intake Depth	
		3419.00 ft	
Oil 40 deg API		Formation Depth	
Water 1.05 Sp.Gr.H2O		3490.00 ft	
Gas 1.08 Sp.Gr.AIR			
Acoustic Velocity 897.398 ft/s			
Formation Submergence			
Total Gaseous Liquid Column HT (TVD)	799 ft		
Equivalent Gas Free Liquid HT (TVD)	799 ft		
Acoustic Test			

Pump Intake 274.4 psi (g)
 Producing BHP 306.7 psi (g)
 Static BHP -.- psi (g)



Conservation Division
District Office No. 1
210 E. Frontview, Suite A
Dodge City, KS 67801



Phone: 620-225-8888
Fax: 620-225-8885
<http://kcc.ks.gov/>

Jay Scott Emler, Chairman
Shari Feist Albrecht, Commissioner
Pat Apple, Commissioner

Sam Brownback, Governor

October 18, 2016

Loveness Mpanje
F. G. Holl Company L.L.C.
9431 E CENTRAL STE 100
WICHITA, KS 67206-2563

Re: Temporary Abandonment
API 15-145-21682-00-01
DEMEL UNIT "OWWO" 1-36
SW/4 Sec.36-20S-16W
Pawnee County, Kansas

Dear Loveness Mpanje:

"Your temporary abandonment (TA) application for the well listed above has been approved. In accordance with K.A.R. 82-3-111 the TA status of this well will expire 10/18/2017.

- * If you return this well to service or plug it, please notify the District Office.
- * If you sell this well you are required to file a Transfer of Operator form, T-1.
- * If the well will remain temporarily abandoned, you must submit a new TA application, CP-111, before 10/18/2017.

You may contact me at the number above if you have questions.

Very truly yours,

Michael Maier"